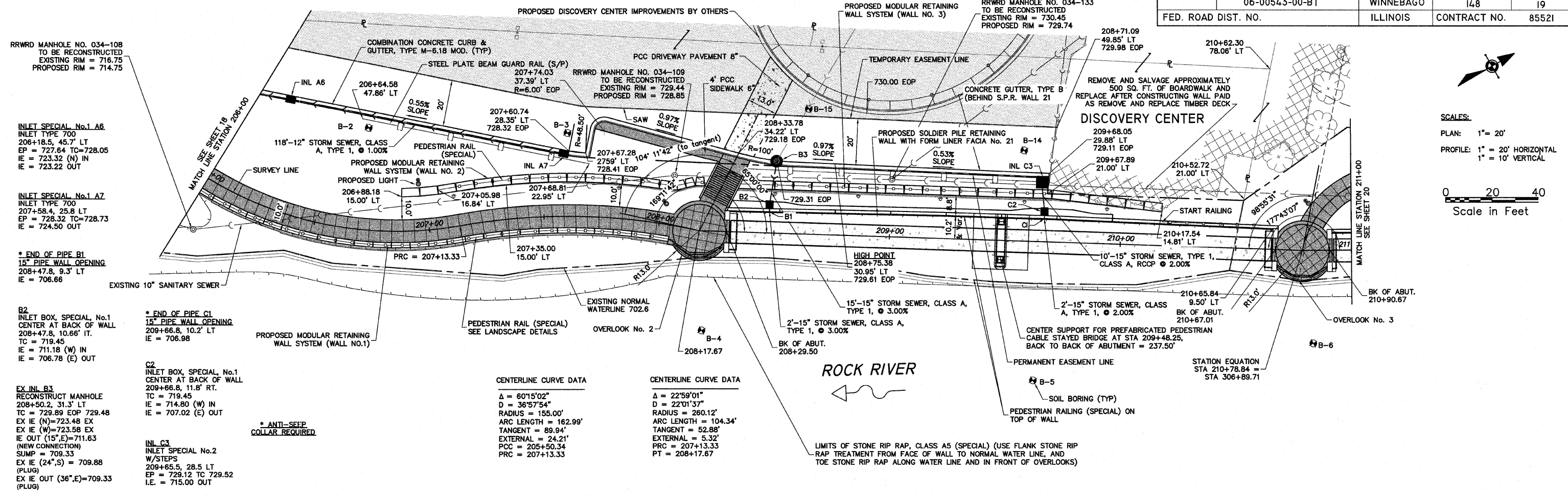


ROCKFORD MUSEUM CAMPUS

F.A. RTE.	06-00543-00-BT	COUNTY	WINNEBAGO	TOTAL SHEETS	148	SHEET NO.	19
FED. ROAD DIST. NO.		ILLINOIS		CONTRACT NO.	85521		



*** END OF PIPE B1**
15" PIPE WALL OPENING
208+47.8, 9.3' LT
IE = 706.66

B2
INLET BOX, SPECIAL, No.1
CENTER AT BACK OF WALL
208+47.8, 10.66' IT.
TC = 719.45
IE = 711.18 (W) IN
IE = 706.78 (E) OUT

EX INL B3
RECONSTRUCT MANHOLE
208+50.2, 31.3' LT
TC = 729.89 EOP 729.48
EX IE (N)=723.48 EX
EX IE (W)=723.58 EX
IE OUT (15", E)=711.63
(NEW CONNECTION)
SUMP = 709.33
EX IE (24", S) = 709.88
(PLUG)
EX IE OUT (36", E)=709.33
(PLUG)

*** END OF PIPE C1**
15" PIPE WALL OPENING
209+66.8, 10.2' LT
IE = 706.98

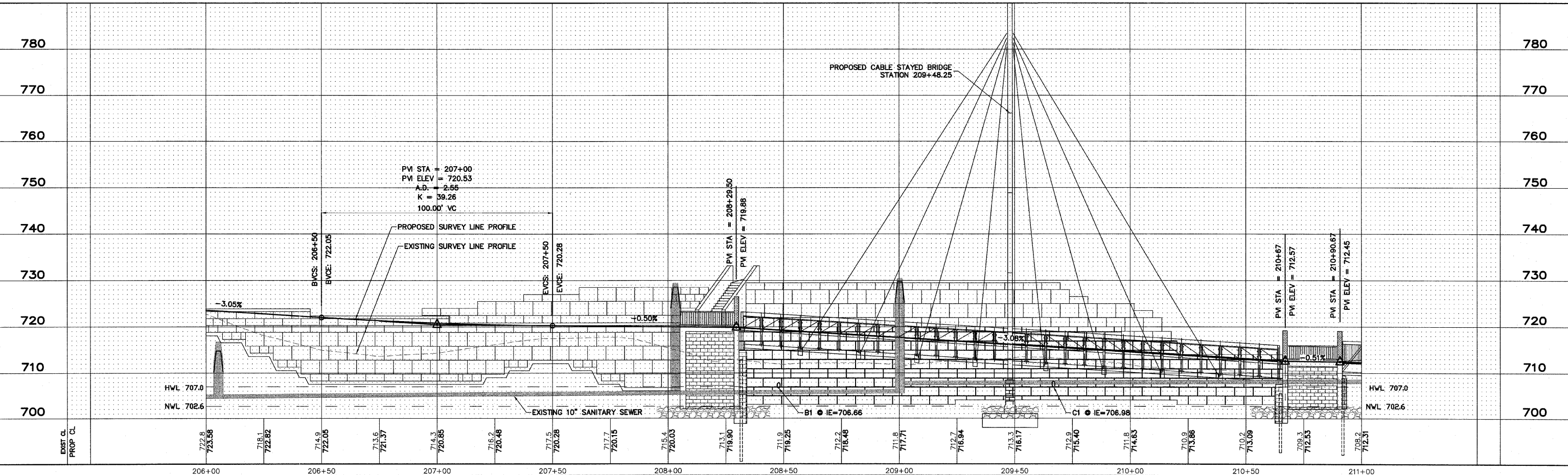
C2
INLET BOX, SPECIAL, No.1
CENTER AT BACK OF WALL
209+66.8, 11.8' RT.
TC = 719.45
IE = 714.80 (W) IN
IE = 707.02 (E) OUT


INL C3
INLET SPECIAL No.2
W/STEPS
209+65.5, 28.5 LT
EP = 729.12 TC 729.52
I.E. = 715.00 OUT

*** ANTI-SEEP COLLAR REQUIRED**

CENTERLINE CURVE DATA
Δ = 60°15'02"
D = 36°57'54"
RADIUS = 155.00'
ARC LENGTH = 162.99'
TANGENT = 89.94'
EXTERNAL = 24.21'
PC = 205+50.34
PRC = 207+13.33

CENTERLINE CURVE DATA
Δ = 22°59'01"
D = 22°01'37"
RADIUS = 260.12'
ARC LENGTH = 104.34'
TANGENT = 52.88'
EXTERNAL = 5.32'
PC = 207+13.33
PT = 208+17.67



SHEET REVIEW		REVISIONS		SCALE: Hor. 1"=20' Ver. 1"=5' DRAWN BY: MS CHECKED BY: JWH DATE: AUGUST 13, 2010	 7282 Argus Drive Rockford, Illinois 61107-5837 (815) 398-2332 FAX (815) 398-2496 Design Firm License: Illinois 184-000816 Copyright 2010 By McClure Engineering Associates, Inc.	PLAN & PROFILE - 206+00 TO 211+00			SHEET NO. 19 OF 148	
AGENCY	DATE	NO.	ITEM			711 NORTH MAIN STREET RIVERWALK MUSEUM CAMPUS ROCKFORD, IL				FILE:H:\08-008 RIVERWALK MUSEUM\DRAWINGS\08-008 PP 206+00 TO 211+00.DWG JOB:08-24-10-008