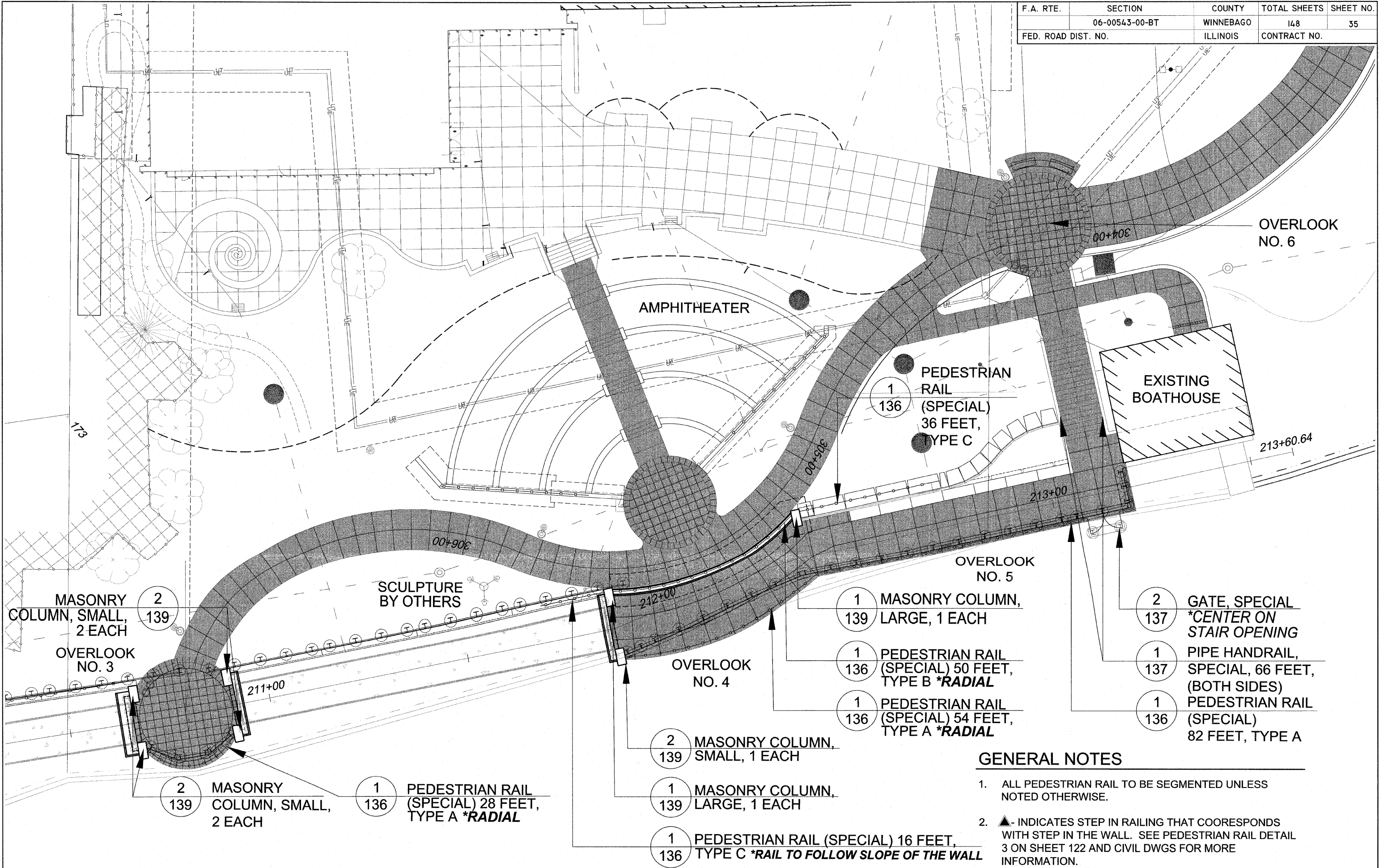


F.A. RTE.	SECTION	COUNTY	TOTAL SHEETS	SHEET NO.
	06-00543-00-BT	WINNEBAGO	148	35
FED. ROAD DIST. NO.		ILLINOIS	CONTRACT NO.	



GENERAL NOTES

- ALL PEDESTRIAN RAIL TO BE SEGMENTED UNLESS NOTED OTHERWISE.
- ▲- INDICATES STEP IN RAILING THAT COORESponds WITH STEP IN THE WALL. SEE PEDESTRIAN RAIL DETAIL 3 ON SHEET 122 AND CIVIL DWGS FOR MORE INFORMATION.

Hitchcock Design Group
 221 West Jefferson Avenue
 Naperville, Illinois 60540
 T 630.961.1787
 F 630.961.9925
 Creating Better Places®

SHEET REVIEW	
AGENCY	DATE

REVISIONS		
NO.	ITEM	DATE

SCALE: Hor. 1"=10'
 DRAWN BY: MAF
 CHECKED BY: TCK
 DATE: 9/3/2010

McClure Engineering Associates, Inc.
 7282 Argus Drive
 Rockford, Illinois 61107-5837
 (815) 398-2332 FAX (815) 398-2496
 Design Firm License: Illinois 184-000816
 Copyright 2010 By McClure Engineering Associates, Inc.

MATERIAL CALLOUT PLAN ENLARGEMENT
 711 NORTH MAIN STREET
 RIVERWALK MUSEUM CAMPUS
 ROCKFORD, IL
 FILE: JOB: 04-28-10-008