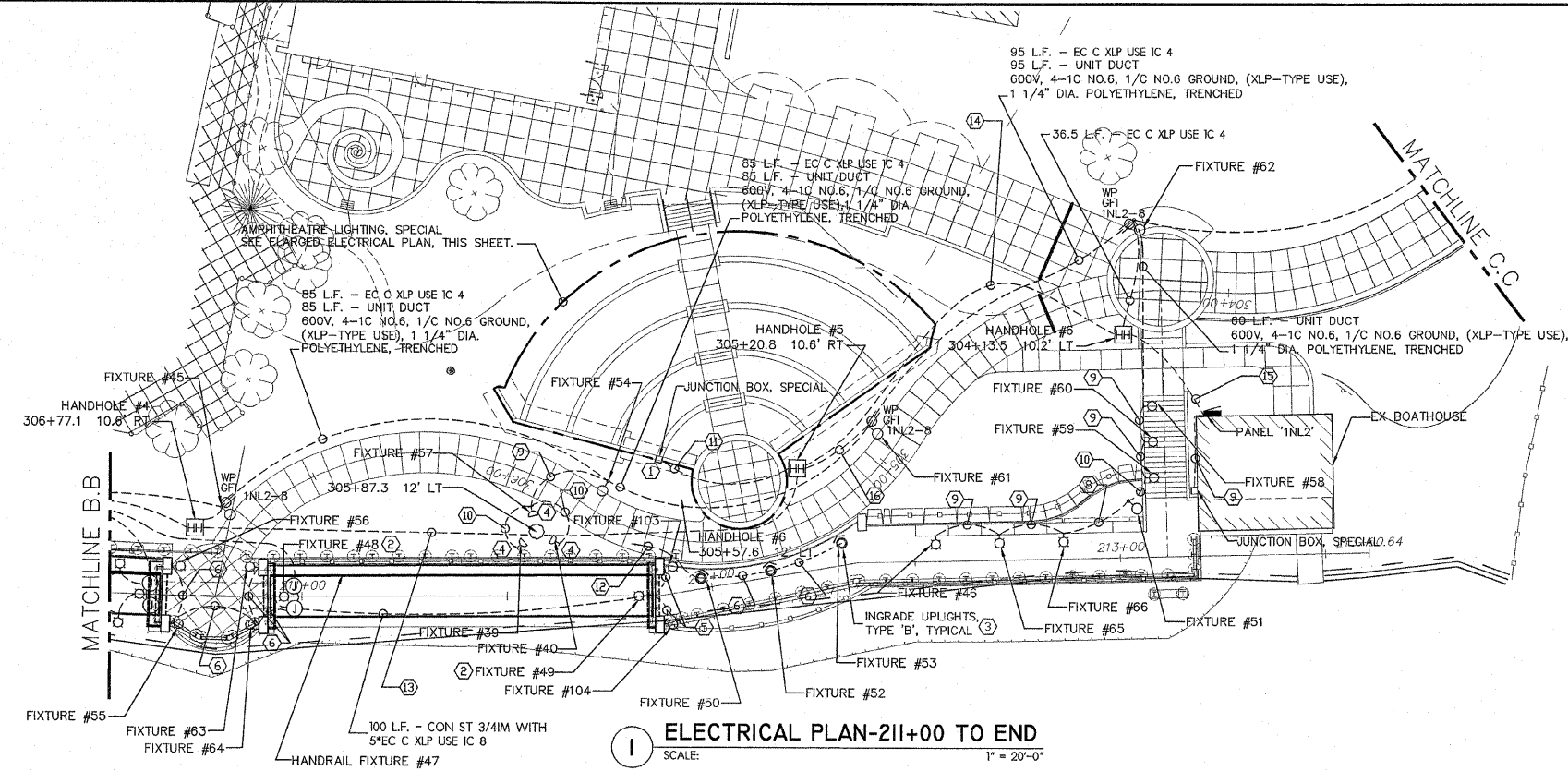
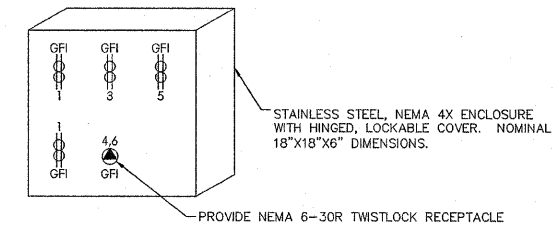


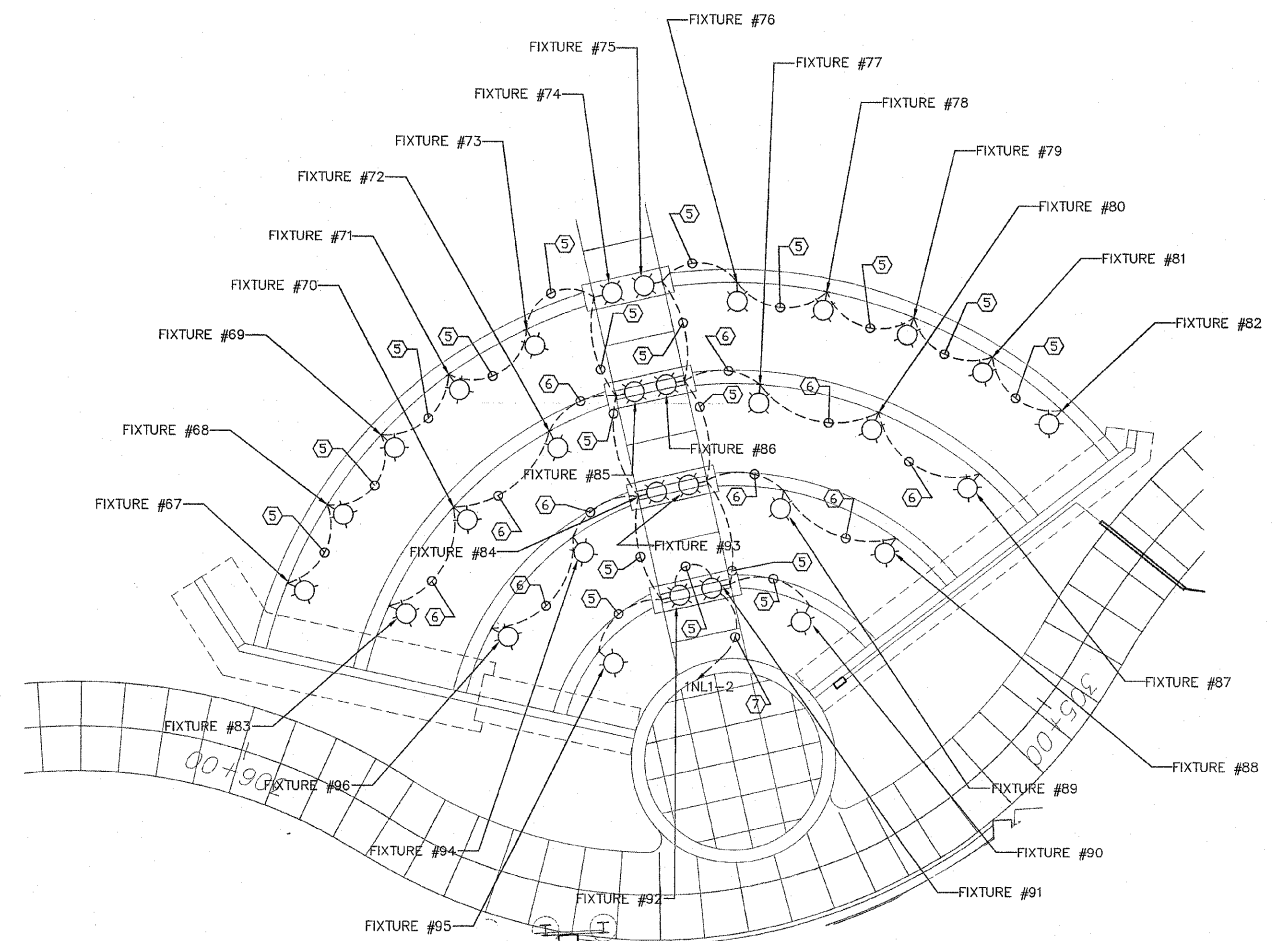
| | | | | |
|---------------------|----------------|-----------|--------------|-----------|
| F.A. RTE. | SECTION | COUNTY | TOTAL SHEETS | SHEET NO. |
| | 06-00543-00-BT | WINNEBAGO | 71 | ---- |
| FED. ROAD DIST. NO. | | ILLINOIS | CONTRACT NO. | |



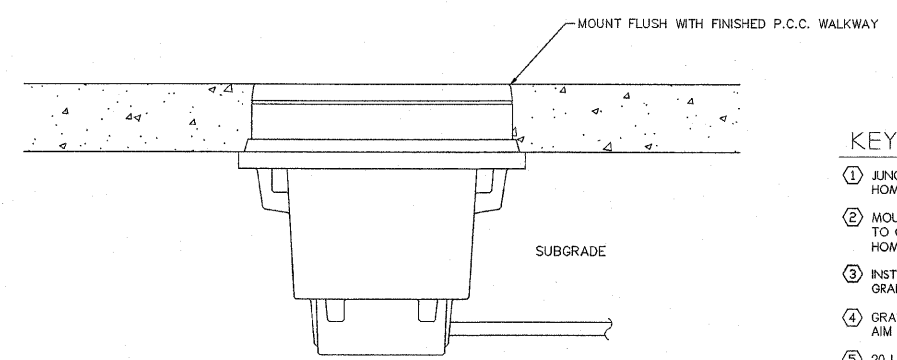
1 ELECTRICAL PLAN-211+00 TO END
SCALE: 1" = 20'-0"



JUNCTION BOX #1, SPECIAL
SCALE: NTS

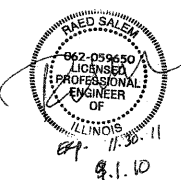


2 ENLARGED ELECTRICAL PLAN
SCALE: 1" = 10'-0"



3 FIXTURE TYPE 'B' MOUNTING DETAIL
SCALE: NTS

- KEYED NOTES:**
- JUNCTION BOX #1, SPECIAL. RECESS INTO RETAINING WALL. HOMERUN TO PANEL 'INL2' WITH 1" C WITH 12-#8, 1-#8 GRD.
 - MOUNT TYPE 'F' FLOODLIGHT BELOW BRIDGE DECK. MOUNT TO CONCRETE SUPPORT STRUCTURE 24" BELOW DECKING. HOMERUN TO PANEL 'INL1-13(15).
 - INSTALL IN-GRADE UPLIGHT FIXTURE FLUSH WITH FINISHED GRADE. HOMERUN TO INL1-6(8). SEE DETAIL THIS SHEET.
 - GRADE MOUNTED FLOODLIGHT - TYPE 'F' AIM FOR MAXIMUM ILLUMINATION OF SCULPTURE.
 - 20 L.F. - CON ST 3/4" WITH 5# EC C XLP USE IC 8 (3/4" C-W/4-#8, 1-#8 GRD)
 - 25 L.F. - CON ST 3/4" WITH 5# EC C XLP USE IC 8 (3/4" C-W/4-#8, 1-#8 GRD)
 - 300 L.F. - CON ST 3/4" WITH 5# EC C XLP USE IC 8 (3/4" C-W/4-#8, 1-#8 GRD)
 - 28 L.F. - UNIT DUCT 600V, 4-1C NO.6, 1/C NO.6 GROUND, (XLP-TYPE USE), 1 1/4" DIA. POLYETHYLENE, TRENCHED
 - 25 L.F. - UNIT DUCT 600V, 4-1C NO.6, 1/C NO.6 GROUND, (XLP-TYPE USE), 1 1/4" DIA. POLYETHYLENE, TRENCHED
 - 15 L.F. - UNIT DUCT 600V, 4-1C NO.6, 1/C NO.6 GROUND, (XLP-TYPE USE), 1 1/4" DIA. POLYETHYLENE, TRENCHED
 - 18 L.F. - CONDUIT IN TRENCH, 2" PVC FURNISH WITH PULLCORD
 - 435 L.F. - CON ST 3/4" WITH 5# EC C XLP USE IC 8 (3/4" C-W/4-#8, 1-#8 GRD)
 - 153 L.F. - CONDUIT IN TRENCH, 2" FURNISH WITH PULLCORD & 2-#2, 1-#2 GRD
 - 102 L.F. - CONDUIT IN TRENCH, 2" FURNISH WITH PULLCORD & 2-#2, 1-#2 GRD
 - 33 L.F. - CONDUIT IN TRENCH, 2" FURNISH WITH PULLCORD & 2-#2, 1-#2 GRD
 - 19 L.F. - EC C XLP USE IC 4



Larson & Darby Group
Architects Engineers Planners
9.1.10

| SHEET REVIEW | |
|--------------|------|
| AGENCY | DATE |
| | |

| REVISIONS | |
|-----------|------|
| NO. | DATE |
| | |

| |
|-------------------------------|
| SCALE: Hor. 1"=20' Ver. 1"=5' |
| DRAWN BY: MS |
| CHECKED BY: JWH |
| DATE: OCTOBER 1, 2010 |

McClure
Engineering Associates, Inc.
7282 Argus Drive Rockford, Illinois 61107-5837
(815) 398-2332 FAX (815) 398-2496
Design Firm License: Illinois 184-000816
Copyright 2010 By McClure Engineering Associates, Inc.

ELECTRICAL PLAN - 211+00 TO END
RIVERWALK MUSEUM CAMPUS
711 NORTH MAIN STREET ROCKFORD, IL
FILE:P:\20029 MCCLURE - ROCKFORD RIVERWALK\DWG\ELEC\08-008 PP 211+00 TO END.DWG JOB:04-28-10-008

SHEET NO. **41** OF **138**