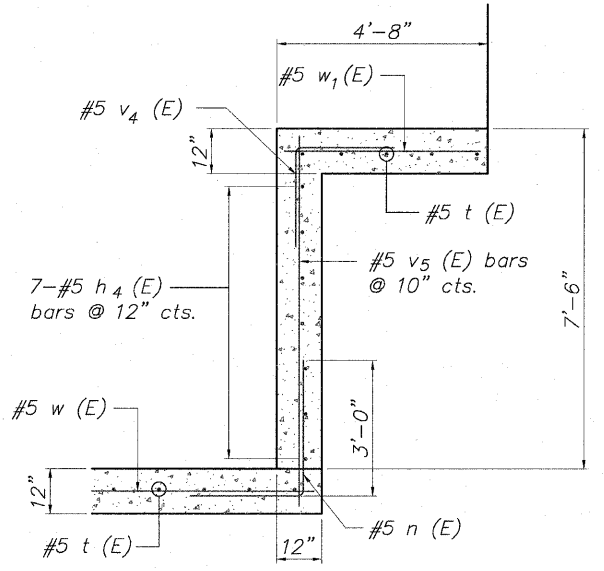
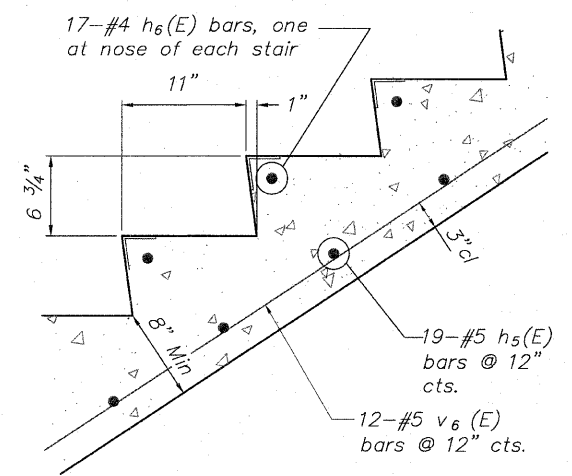


**BASE SLAB PLAN**  
**Showing Reinforcement**

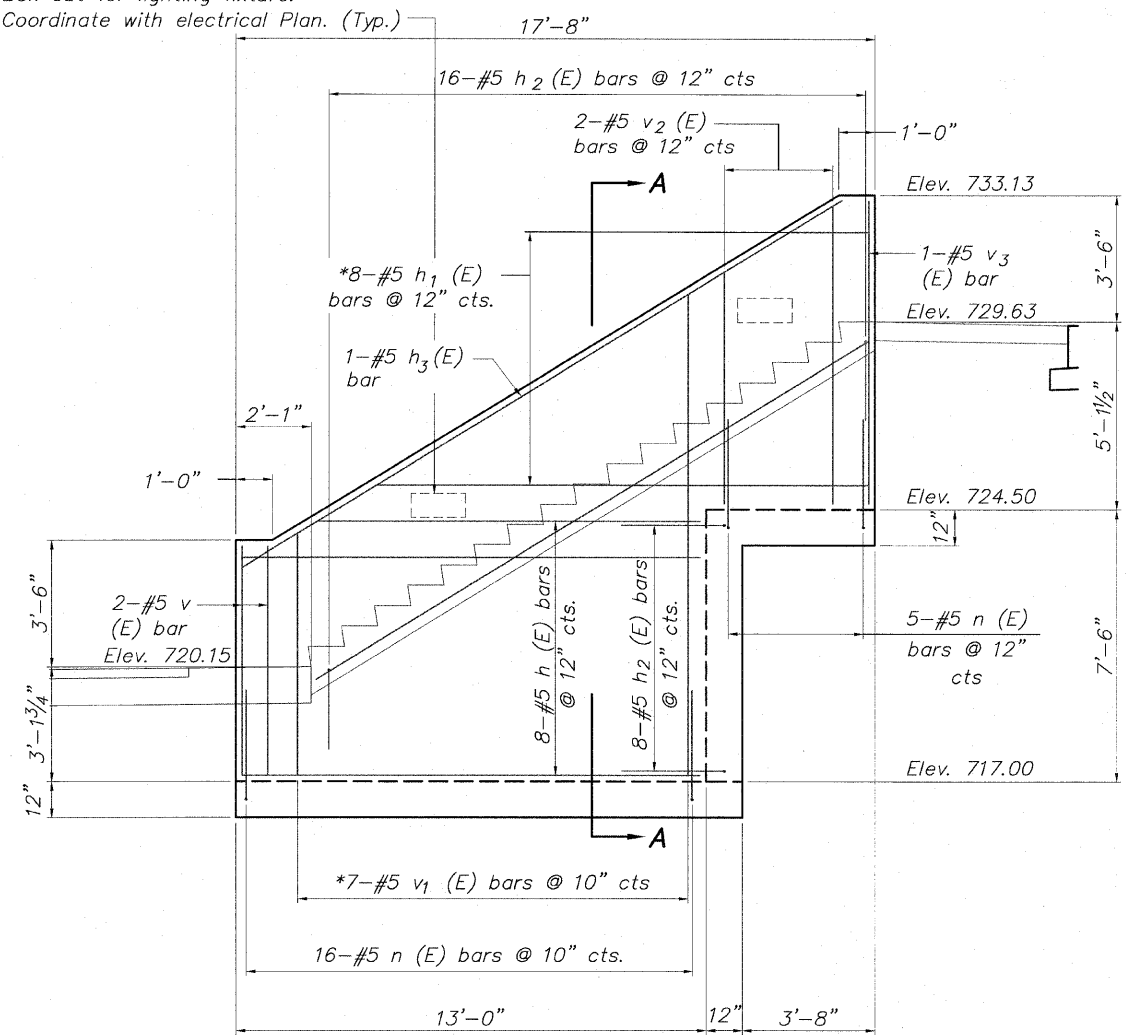
Box out for lighting fixture.  
Coordinate with electrical Plan. (Typ.)



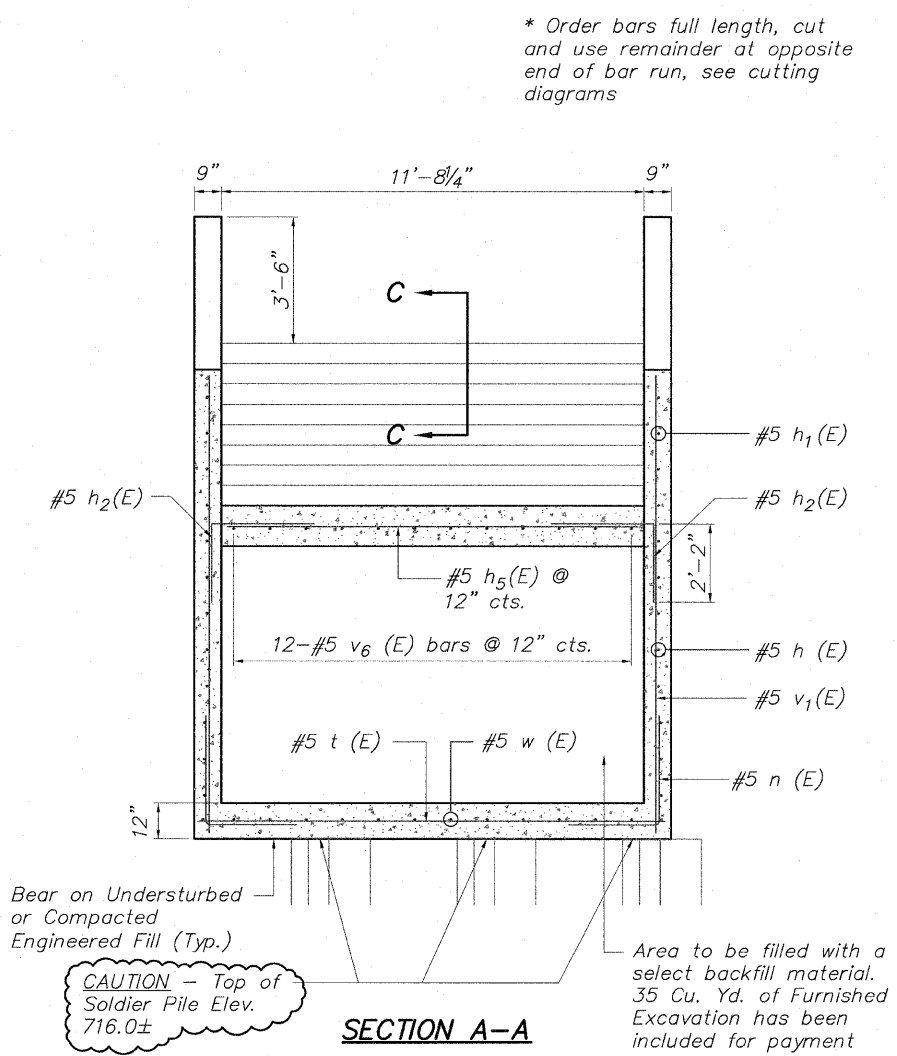
**BACK WALL SECTION B-B**



**STAIR TREAD DETAIL**  
**SECTION C-C**  
not to scale



**SIDEWALL ELEVATION**  
**Showing Reinforcement**



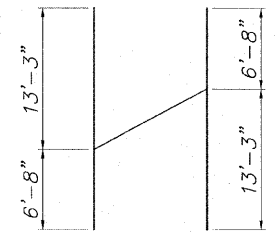
**SECTION A-A**

Bear on Underdressed or Compacted Engineered Fill (Typ.)

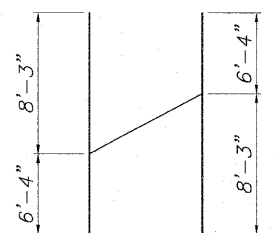
**CAUTION** - Top of Soldier Pile Elev. 716.0±

Area to be filled with a select backfill material. 35 Cu. Yd. of Furnished Excavation has been included for payment

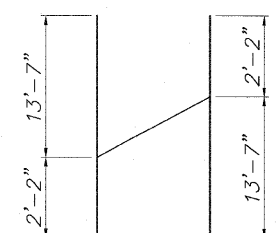
\* Order bars full length, cut and use remainder at opposite end of bar run, see cutting diagrams



**BAR v1 (E)**  
**Cutting Diagram**

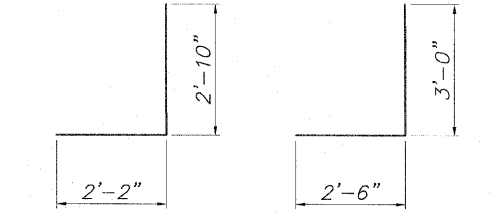


**BAR v2 (E)**  
**Cutting Diagram**

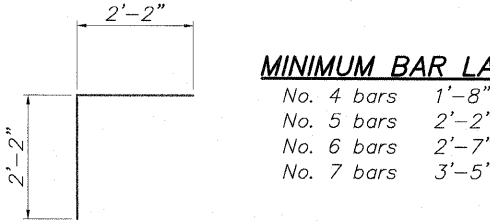


**BAR h1 (E)**  
**Cutting Diagram**

Bar	No.	Size	Length	Shape
h (E)	16	#5	12'-8"	—
* h1 (E)	8	#5	15'-9"	—
h2 (E)	48	#5	5'-0"	└
h3 (E)	2	#5	19'-5"	—
h4 (E)	7	#5	12'-10"	—
h5 (E)	19	#5	11'-4"	—
h6 (E)	17	#4	11'-4"	—
n (E)	48	#5	5'-6"	└
t (E)	22	#5	12'-10"	—
v (E)	4	#5	6'-4"	—
* v1 (E)	14	#5	19'-11"	—
* v2 (E)	4	#5	14'-7"	—
v3 (E)	2	#5	8'-4"	—
v4 (E)	14	#5	4'-4"	└
v5 (E)	16	#5	8'-2"	—
v6 (E)	12	#5	17'-10"	—
w (E)	14	#5	13'-8"	—
w1 (E)	14	#5	4'-4"	—
Concrete Structures	Cu. Yd.		29.4	
Protective Coat	Sq. Yd.		35	
Reinforcement Bars (Epoxy Coated)	Pound		2,740	
Rubbed Finish	Sq. Ft.		319	
Furnished Excavation	Cu. Yd.		35	



**BAR h2 (E)**      **BAR n (E)**



**MINIMUM BAR LAP**  
No. 4 bars 1'-8"  
No. 5 bars 2'-2"  
No. 6 bars 2'-7"  
No. 7 bars 3'-5"

**BAR v4 (E)**

**SOUTH STAIRS AT OVERLOOK NO. 2**  
**STAIRWAY DETAILS**  
**PEDESTRIAN RIVERWALK**  
**ALONG THE ROCK RIVER**  
**WINNEBAGO COUNTY**  
**SECTION NO. 06-00543-00-BT**  
**STATION 208+17.78**

DESIGNED	CTB
CHECKED	AAG
DRAWN	JAW
CHECKED	JWH

**McClure**  
Engineering Associates, Inc.  
7282 Argus Drive  
(815) 398-2332  
Rockford, Illinois 61107-5837  
Fax (815) 398-2496  
Design Firm License: #104-000816  
Copyright 2010 by McClure Engineering Associates, Inc.

SHEET NO. 3  
5 SHEETS

F.A. RTE.	SECTION	COUNTY	TOTAL SHEETS	SHEET NO.
	06-00543-00-BT	WINNEBAGO	148	48
FED. ROAD DIST. NO.	ILLINOIS	FED. AID PROJECT	CONTRACT NO.	85521