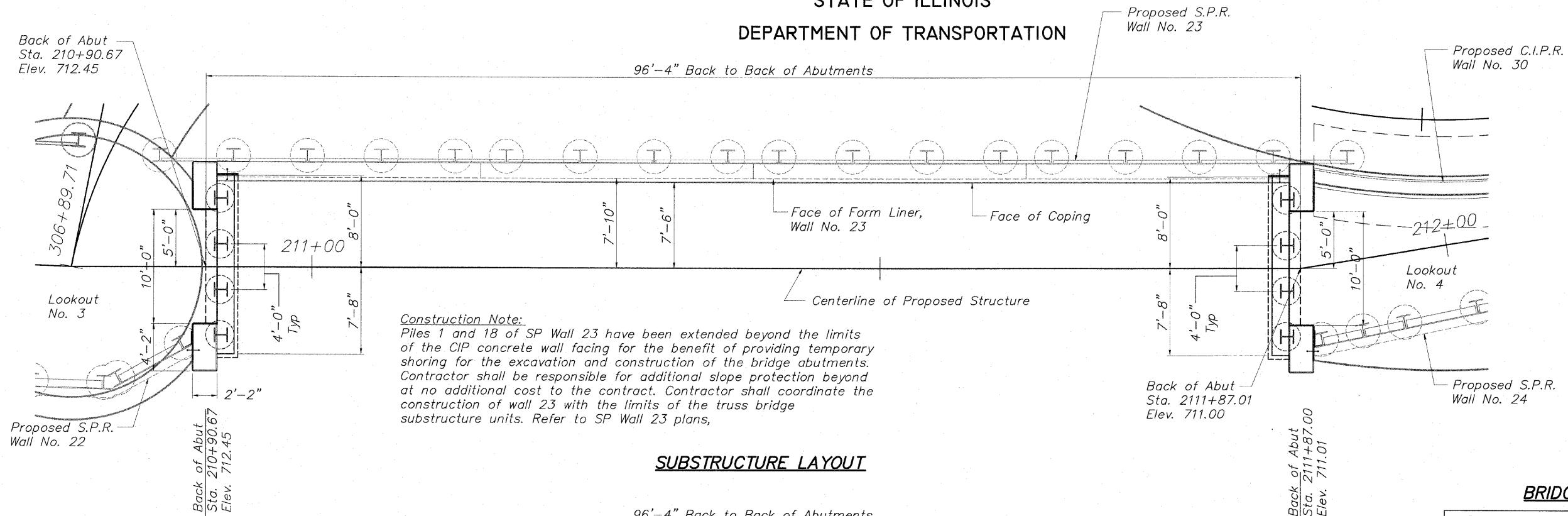
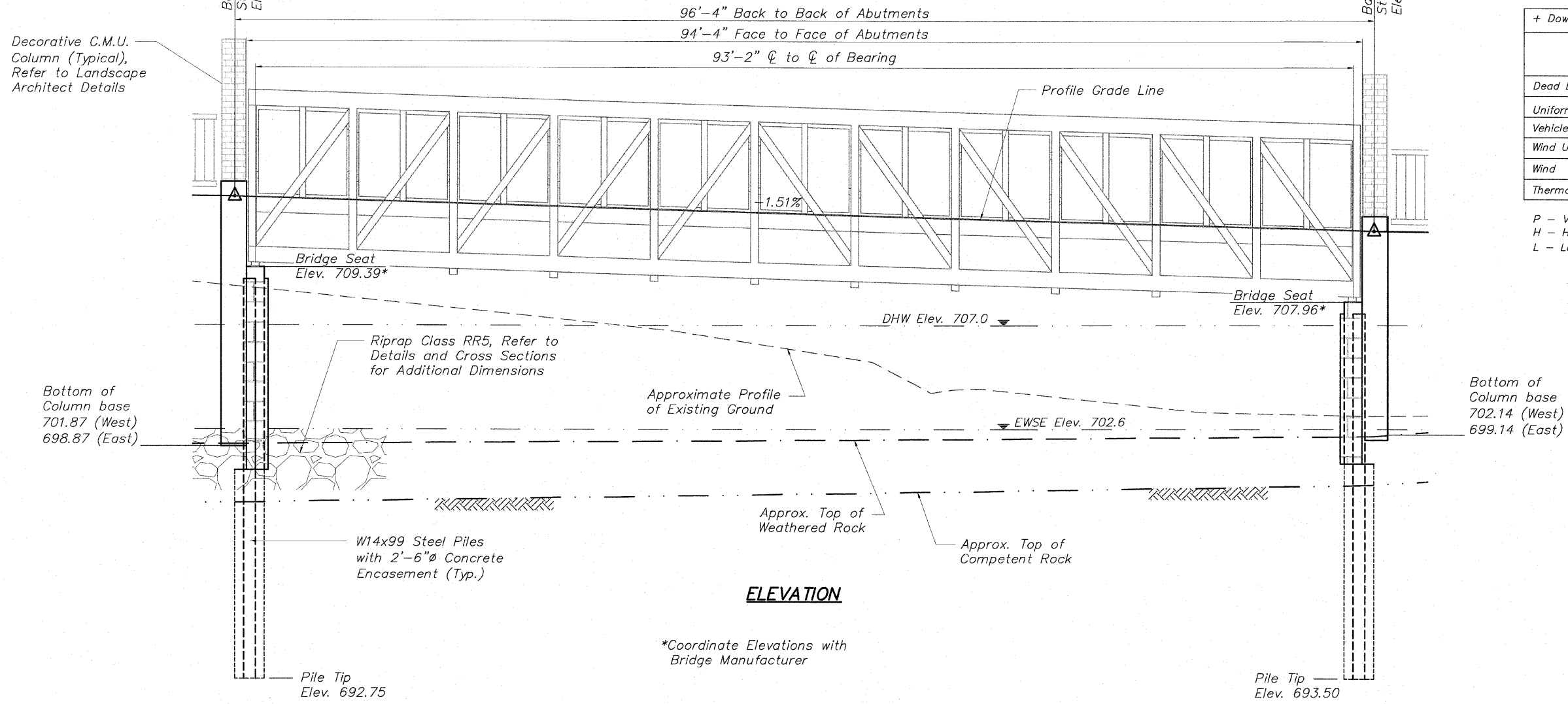


STATE OF ILLINOIS
DEPARTMENT OF TRANSPORTATION



Construction Note:
Piles 1 and 18 of SP Wall 23 have been extended beyond the limits of the CIP concrete wall facing for the benefit of providing temporary shoring for the excavation and construction of the bridge abutments. Contractor shall be responsible for additional slope protection beyond at no additional cost to the contract. Contractor shall coordinate the construction of wall 23 with the limits of the truss bridge substructure units. Refer to SP Wall 23 plans,

SUBSTRUCTURE LAYOUT



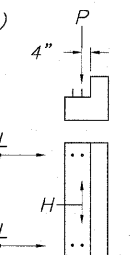
ELEVATION

*Coordinate Elevations with Bridge Manufacturer

BRIDGE REACTIONS

	+ Downward Load			- Upward Load		
	P (Kips)	H (Kips)	L (Kips)	P (Kips)	H (Kips)	L (Kips)
Dead Load	40.3					
Uniform Live Load	22.1					
Vehicle Load	10.0					
Wind Uplift	-9.0					
Wind	3.9	12.4				
Thermal						5.2

P - Vertical Load Each Base Plate (4 per Bridge)
H - Horizontal Load per Abutment (2 per Bridge)
L - Longitudinal Load Each Base Plate (4 per Bridge)



**SUBSTRUCTURE LAYOUT
PEDESTRIAN TRUSS BRIDGE
PEDESTRIAN RIVERWALK
ALONG THE ROCK RIVER
WINNEBAGO COUNTY
SECTION NO. 06-00543-00-BT
STATION 210+90.67 TO
STATION 211+87.01
STRUCTURE NO. 6351**

SCALES:
PLAN: 1" = 5'
PROFILE: 1" = 5' HORIZONTAL
1" = 2.5' VERTICAL

0 5 10
Scale in Feet

DESIGNED	CTB
CHECKED	AAG
DRAWN	JAW
PEER REVIEWED	

McClure
Engineering Associates, Inc.
7282 Argus Drive
Rockford, Illinois 61107-5837
(815) 398-2332 Fax (815) 398-2496

SHEET NO. 2
8 SHEETS

F.A. RTE.	SECTION	COUNTY	TOTAL SHEETS	SHEET NO.
	06-00543-00-BT	WINNEBAGO	148	68
CONTRACT NO.			85521	
FED. ROAD DIST. NO.	ILLINOIS	FED. AID PROJECT		