

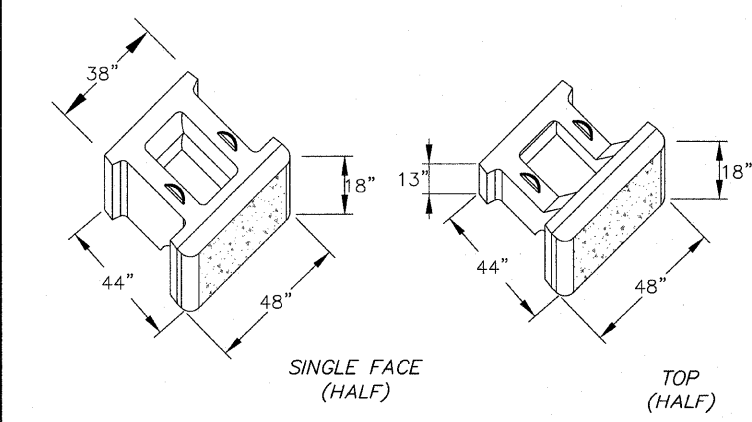
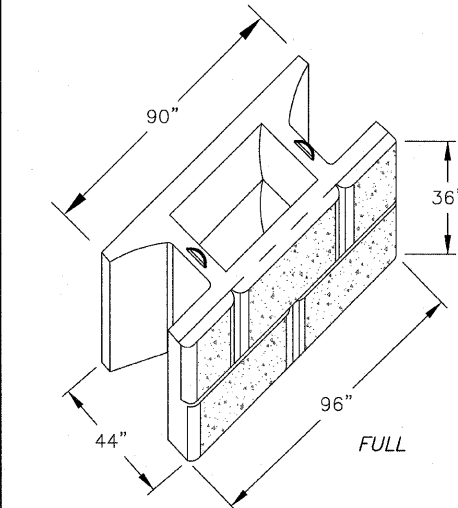
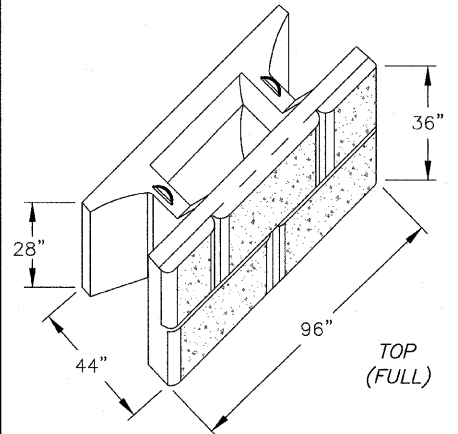
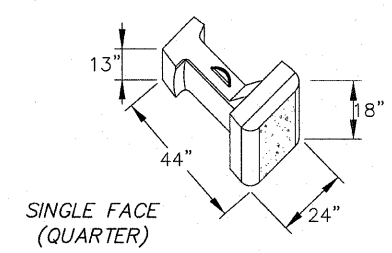
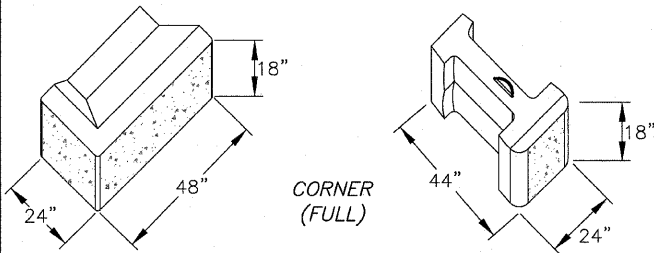
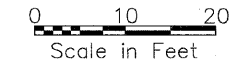
STATE OF ILLINOIS
DEPARTMENT OF TRANSPORTATION

CENTERLINE CURVE DATA

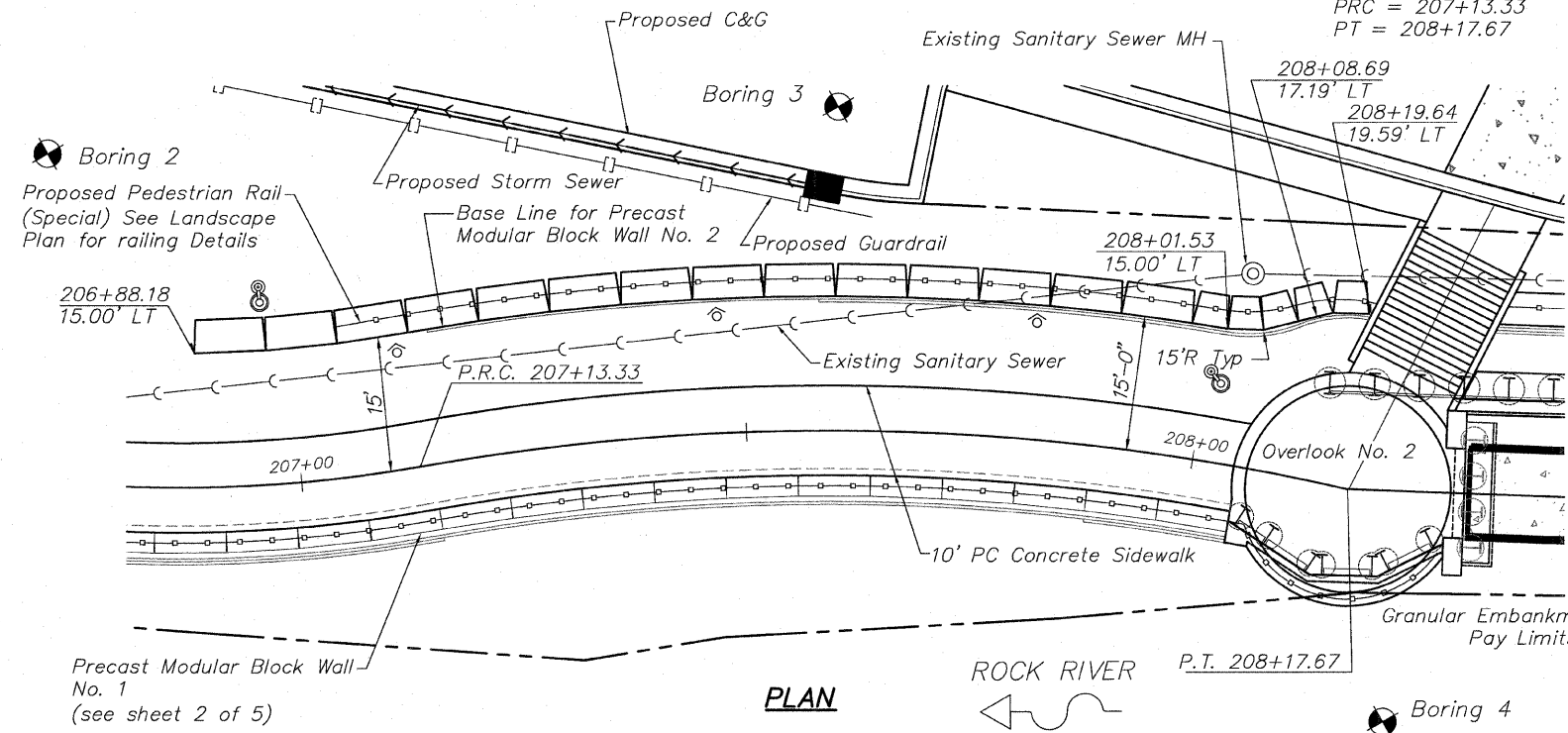
$\Delta = 22^{\circ}59'01''$
 $D = 22^{\circ}01'37''$
 RADIUS = 260.12'
 ARC LENGTH = 104.34'
 TANGENT = 52.88'
 EXTERNAL = 5.32'
 PRC = 207+13.33
 PT = 208+17.67

SCALES:

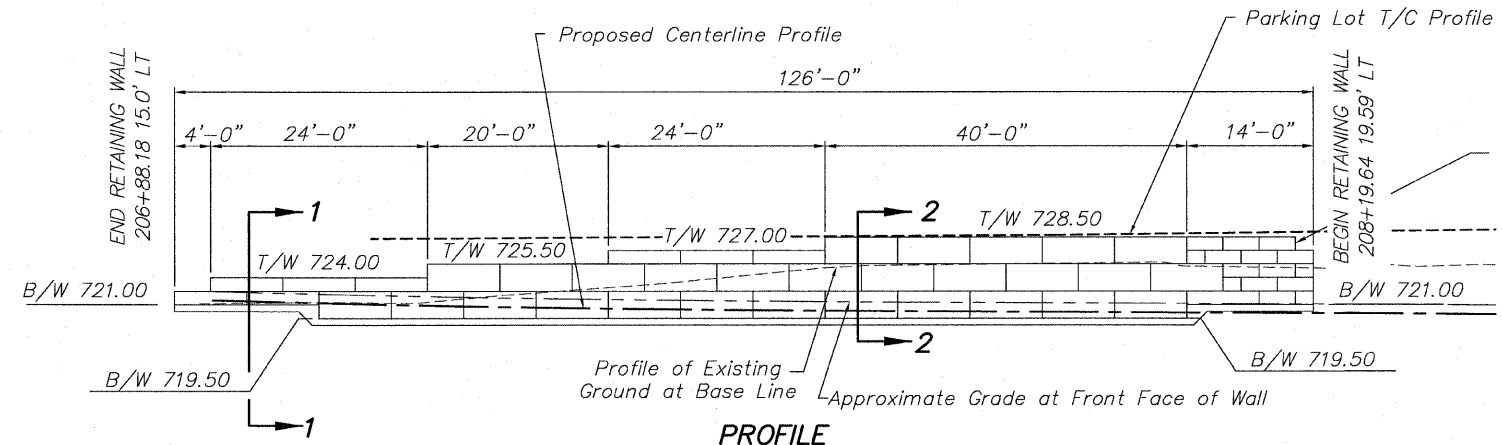
PLAN: 1" = 10'
 PROFILE: 1" = 10' HORIZONTAL
 1" = 10' VERTICAL



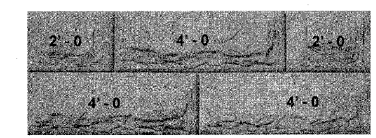
BLOCK DIMENSIONS



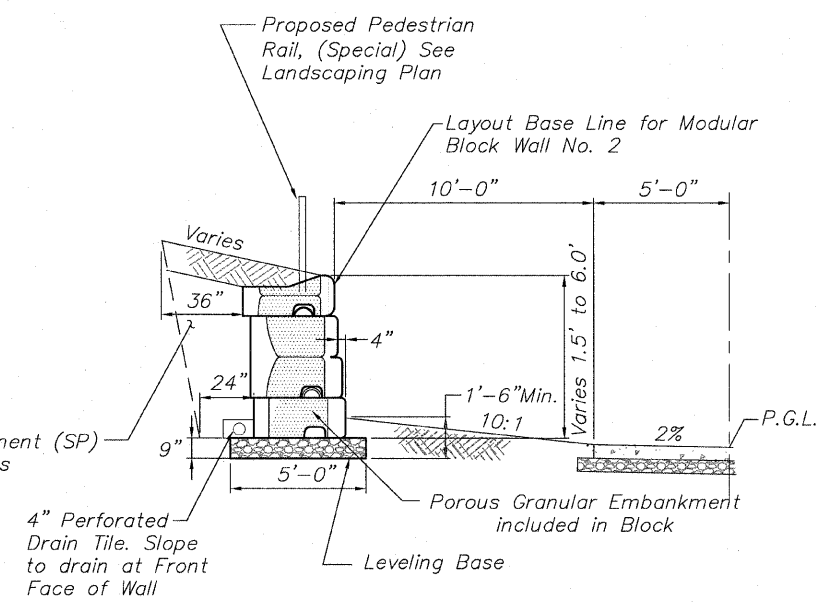
PLAN



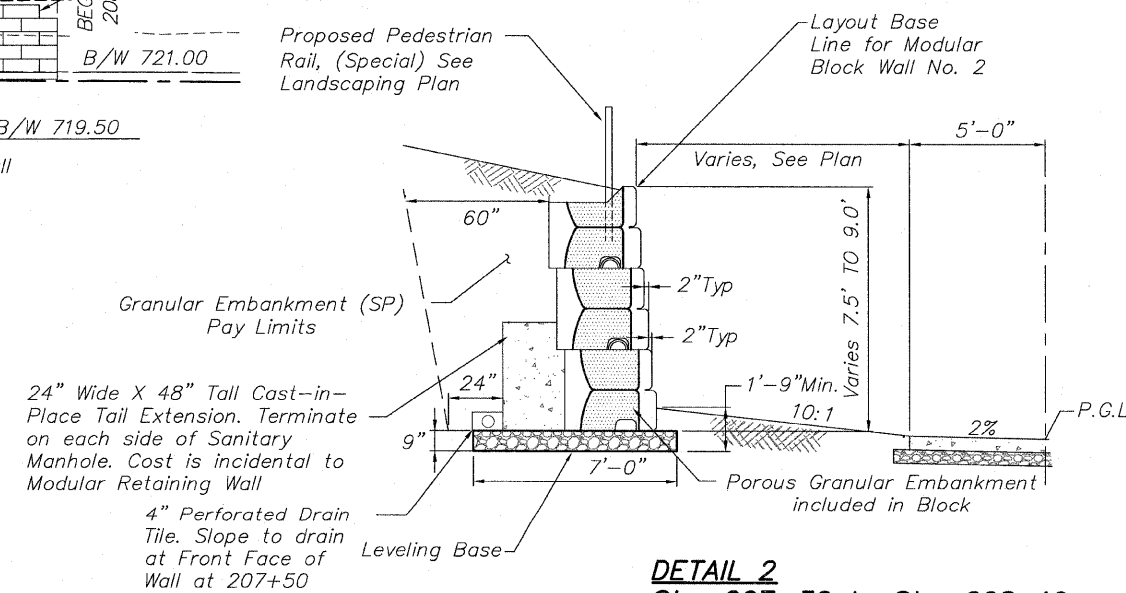
PROFILE



SEE GENERAL NOTES, SHEET 1 OF 5



DETAIL 1
Sta. 206+88 to Sta. 207+36



DETAIL 2
Sta. 207+36 to Sta. 208+19

PRECAST MODULAR BLOCK WALL NO. 2

DESIGNED	CTB
CHECKED	AAG
DRAWN	JAW
CHECKED	JMH

McClure
Engineering Associates, Inc.
7282 Argus Drive
Rockford, Illinois 61107-5837
(815) 398-2332 Fax (815) 398-2496
Design Firm License: Illinois #184-000816
Copyright 2010 By McClure Engineering Associates, Inc.

SHEET NO. 3
5 SHEETS

F.A. RTE.	SECTION	COUNTY	TOTAL SHEETS	SHEET NO.
	06-00543-00-BT	WINNEBAGO	148	77
FED. ROAD DIST. NO.		ILLINOIS	FED. AID PROJECT	
			CONTRACT NO. 85521	

H:\08-008 RIVERWALK MUSEUM\DESIGN\DRAWINGS\STRUCTURAL\WALLS.DWG. MRW2. 10/26/2010 3:44:57 PM. JH