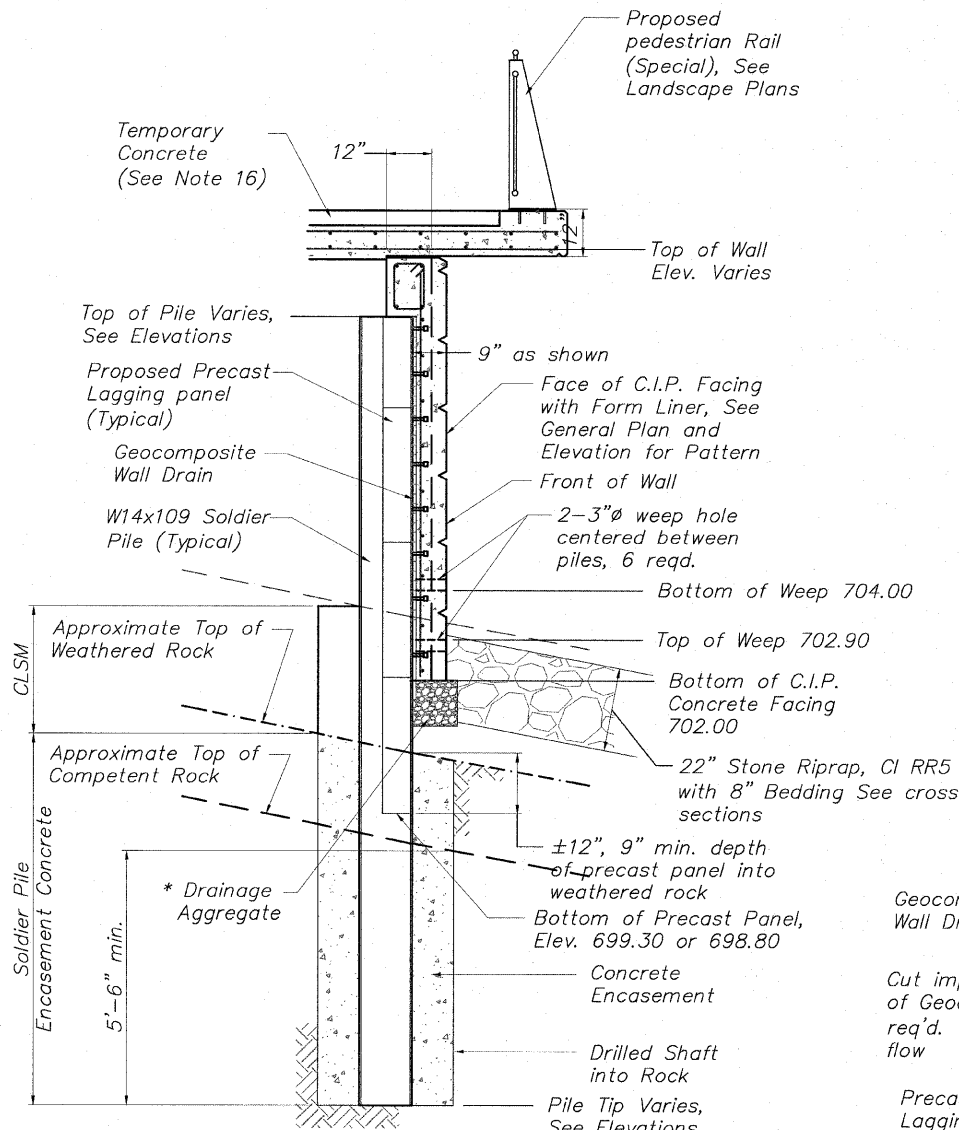
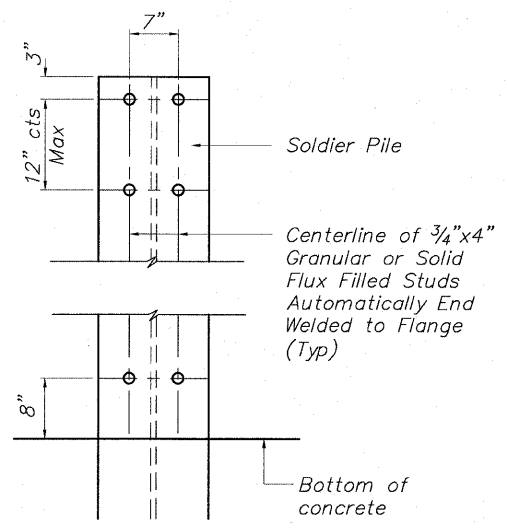


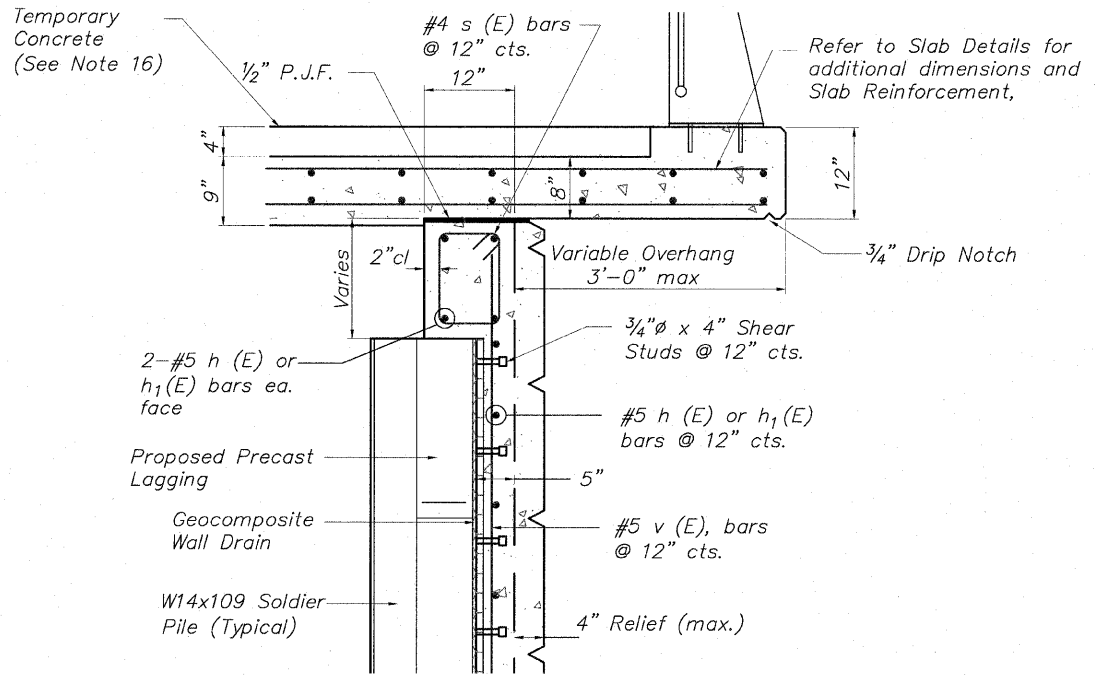
STATE OF ILLINOIS  
DEPARTMENT OF TRANSPORTATION



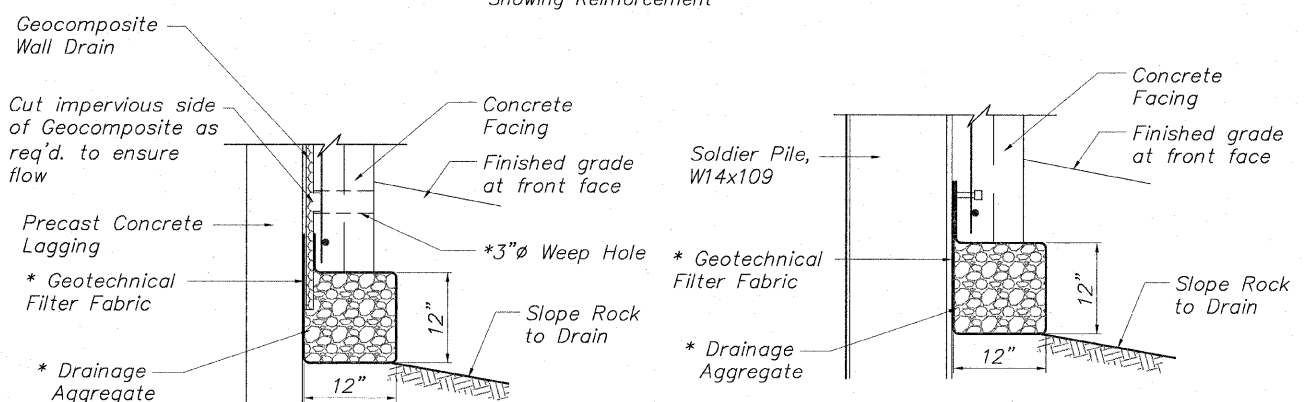
**TYPICAL WALL SECTION**  
Showing Reinforcement



**STUD SHEAR CONNECTOR LAYOUT**



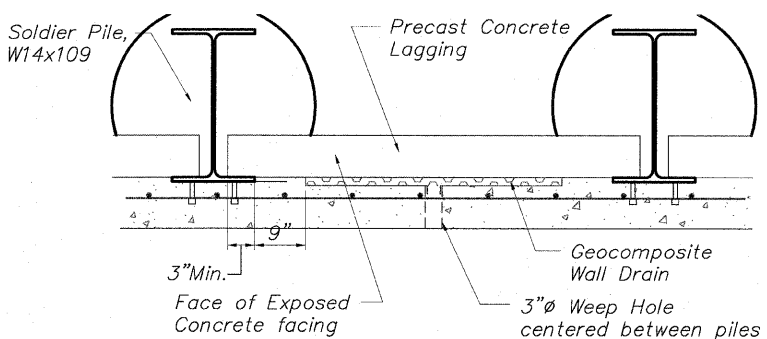
**TYPICAL WALL SECTION**  
Showing Reinforcement



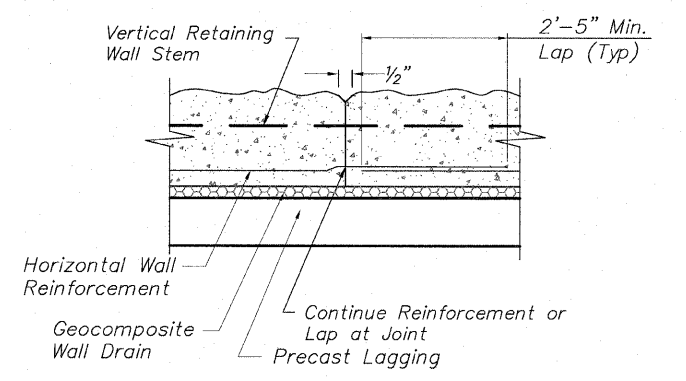
**BETWEEN SOLDIER PILES**

**AT SOLDIER PILES**

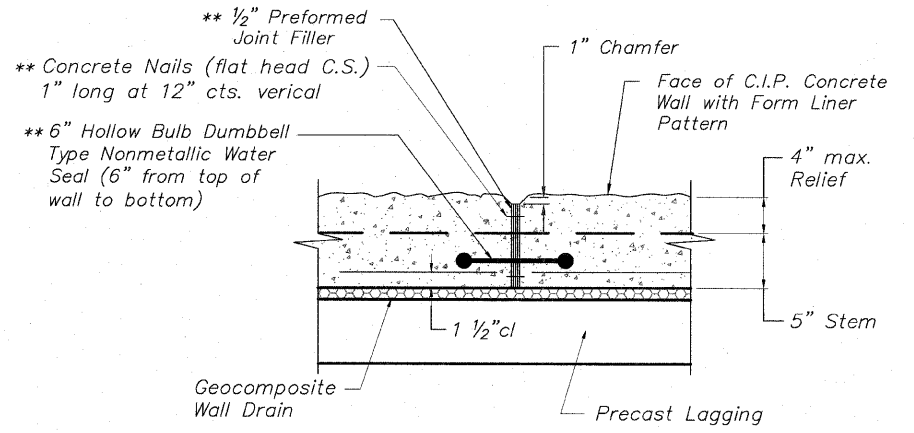
**DRAINAGE AGGREGATE DETAIL**



**GEOCOMPOSITE WALL DRAIN DETAIL**

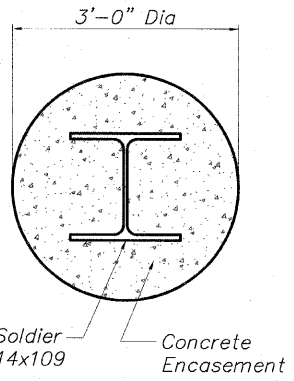


**PLAN VIEW**  
**TYPICAL CONSTRUCTION JOINT DETAIL**  
No Scale



**PLAN VIEW**  
Space Expansion Joints as Shown on Elevation  
\*\* Cost included with Concrete Structures

**TYPICAL EXPANSION JOINT DETAIL**  
NO SCALE



**TYPICAL PILE ENCASEMENT SECTION**  
No Scale

**MINIMUM BAR LAP**

No. 4 bars	1'-8"
No. 5 bars	2'-2"
No. 6 bars	2'-7"

**SP WALL No. 22 DETAILS**  
**PEDESTRIAN RIVERWALK**  
**ALONG THE ROCK RIVER**  
**WINNEBAGO COUNTY**  
**SECTION NO. 06-00543-00-BT**  
**STATION 210+67.98 TO**  
**STATION 210+89.50**

DESIGNED	CTB
CHECKED	AAG
DRAWN	JAW
CHECKED	JWH

**McClure**  
Engineering Associates, Inc.  
7282 Argus Drive  
(815) 398-2332  
Rockford, Illinois 61107-5837  
Fax (815) 398-2496  
Design Firm License: Illinois #184-000816  
Copyright 2009 by McClure Engineering Associates, Inc.

SHEET NO. 4  
5 SHEETS

F.A. RTE.	SECTION	COUNTY	TOTAL SHEETS	SHEET NO.
	06-00543-00-BT	WINNEBAGO	148	93
FED. ROAD DIST. NO.	ILLINOIS	CONTRACT NO.	85521	
		FED. AID PROJECT		

H:\06-008 RIVERWALK MUSEUM\DESIGN\DRAWINGS\STRUCTURAL\GPBE\06-008 SP-WALL 22 DWG DET-22 (3).10/26/2010 4:04:32 PM