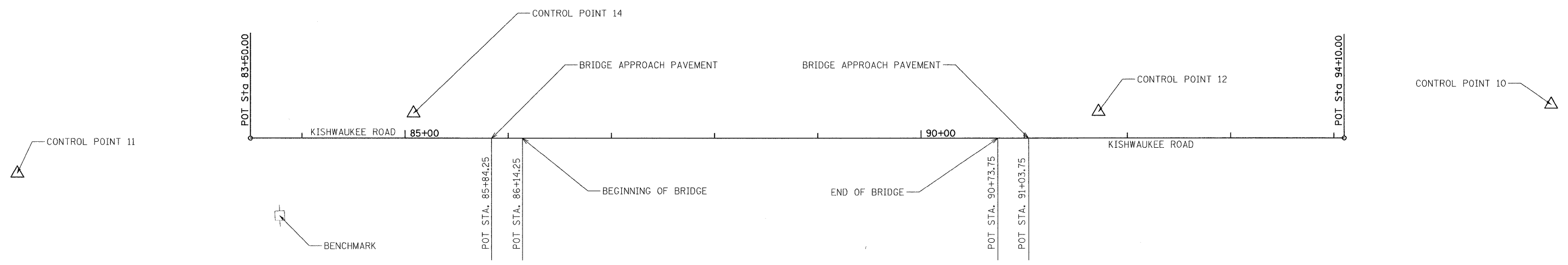
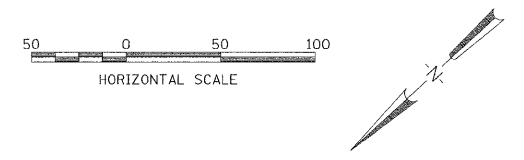


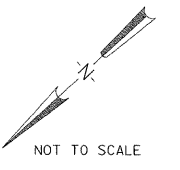
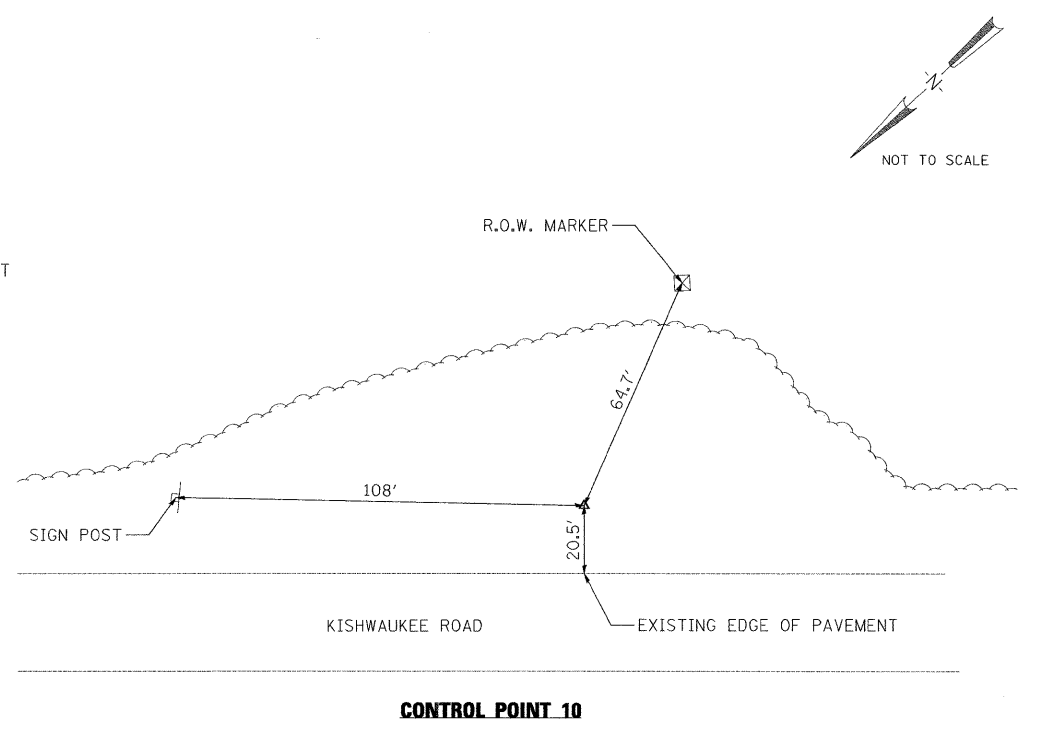
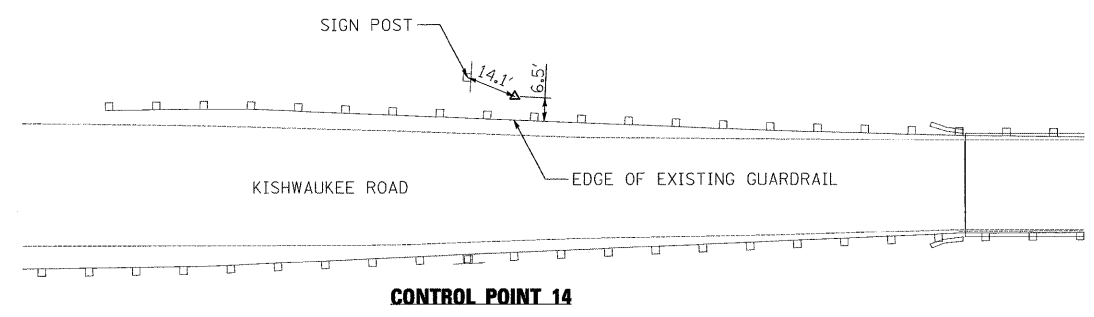
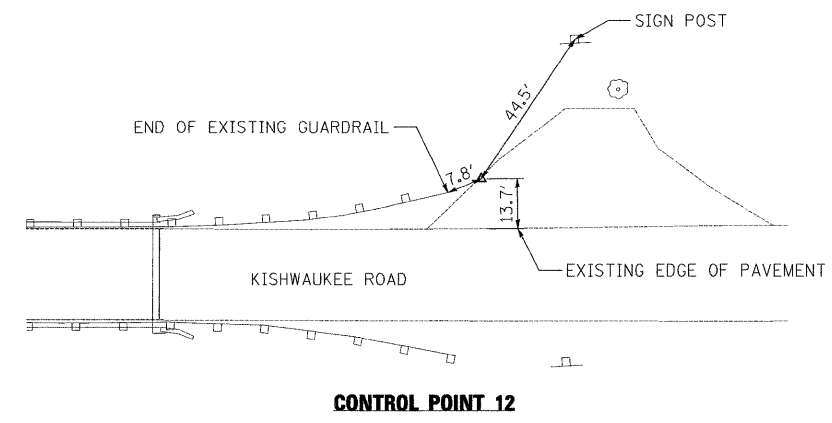
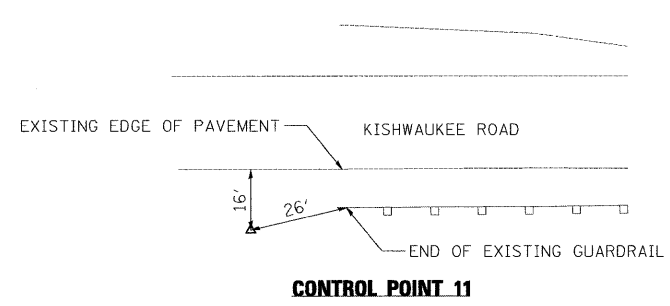


© Copyright Hanson Professional Services Inc. 2010

ALIGNMENT COORDINATES		
CONTROL ITEM	NORTHING	EASTING
CONTROL 10	2,011,337.15	2,576,648.32
CONTROL 11	2,011,986.74	2,577,986.81
CONTROL 12	2,011,517.12	2,577,048.31
CONTROL 14	2,011,781.34	2,577,657.27
POT 83+50.00	2,011,866.07	2,577,793.02
POT 85+84.25	2,011,773.30	2,577,577.92
POT 86+14.25	2,011,761.42	2,577,550.38
POT 90+73.75	2,011,579.43	2,577,128.45
POT 91+03.75	2,011,567.55	2,577,100.90
POT 94+10.00	2,011,446.26	2,576,819.69



BENCHMARK
RAILROAD SPIKE IN POWER POLE
STA. 83+78.50, 75.30' RT.
ELEVATION 687.86



LAYOUT	
DRAWN	
REVIEWED	

FILE NAME = C-101-GEOM.dgn	USER NAME =	DESIGNED -	REVISED -
MODEL NAME =	PLOT SCALE =	DRAWN -	REVISED -
	PLOT DATE = 10/26/2010	CHECKED -	REVISED -
		DATE -	REVISED -

**STATE OF ILLINOIS
DEPARTMENT OF TRANSPORTATION**

ALIGNMENT, TIES, & BENCHMARKS			
KISHWAUKEE RIVER BRIDGE			
WINNEBAGO COUNTY, IL			
SCALE:	SHEET NO. OF SHEETS	STA. TO STA.	

F.A.U. RTE.	SECTION	COUNTY	TOTAL SHEETS	SHEET NO.
5103	03-00337-00-BR	WINNEBAGO	66	6
FED. ROAD DIST. NO.		ILLINOIS FED. AID PROJECT		
		CONTRACT NO. 85523		