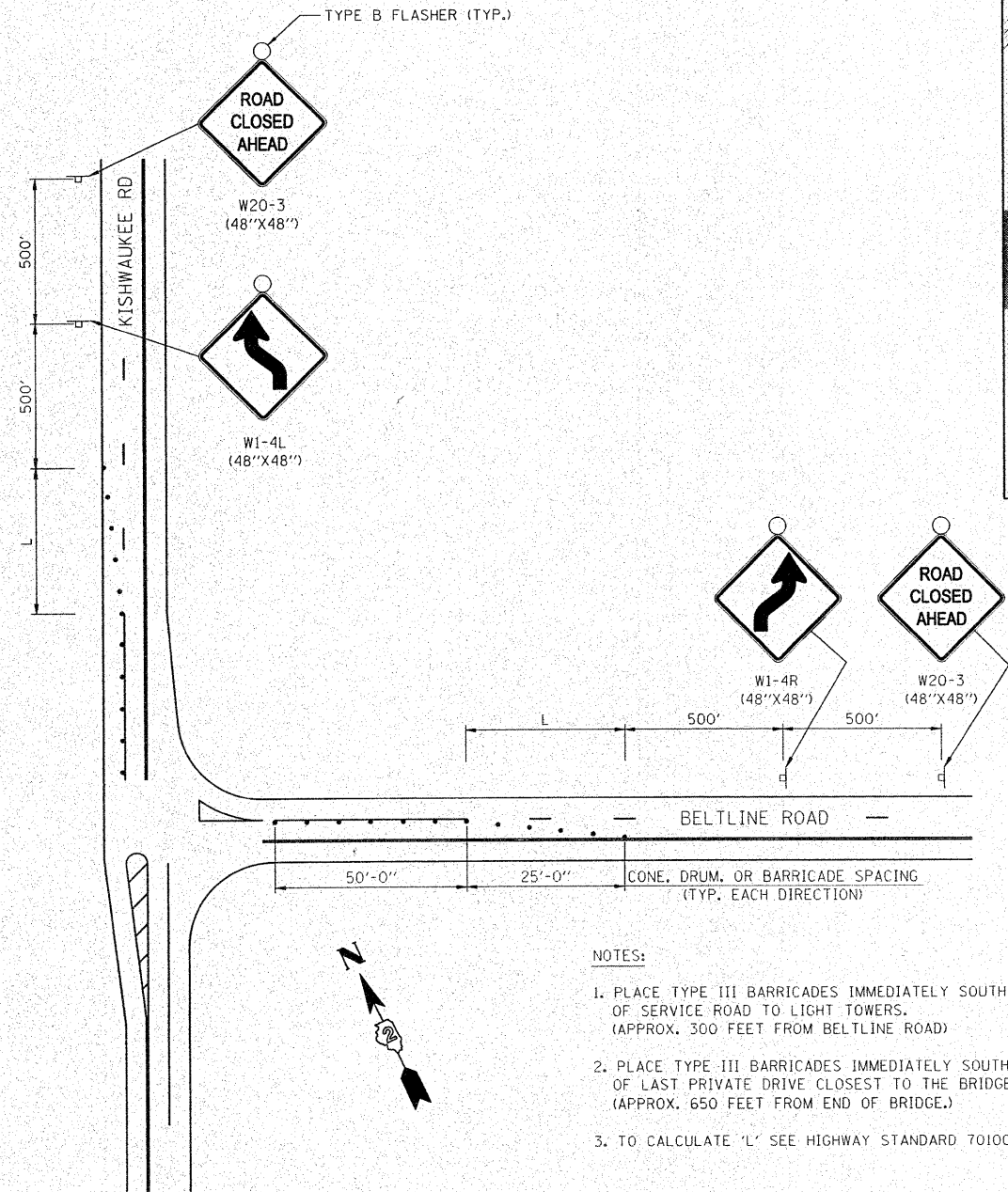




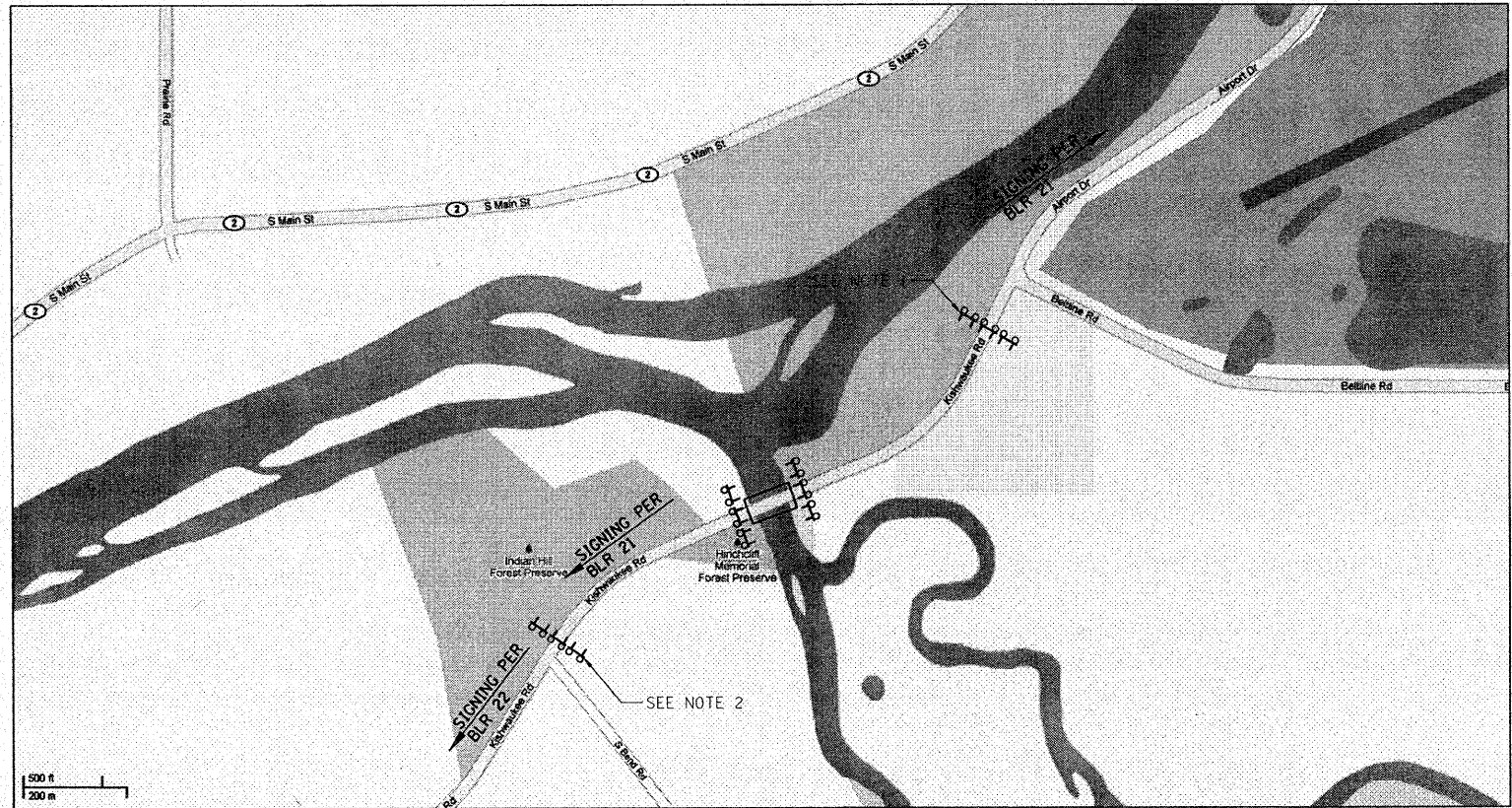
© Copyright Hanson Professional Services Inc. 2010



KISHWAUKEE RD./BELTLINE RD.
INTERSECTION DETAIL

NOTES:

1. PLACE TYPE III BARRICADES IMMEDIATELY SOUTH OF SERVICE ROAD TO LIGHT TOWERS. (APPROX. 300 FEET FROM BELTLINE ROAD)
2. PLACE TYPE III BARRICADES IMMEDIATELY SOUTH OF LAST PRIVATE DRIVE CLOSEST TO THE BRIDGE. (APPROX. 650 FEET FROM END OF BRIDGE.)
3. TO CALCULATE 'L' SEE HIGHWAY STANDARD 701006.



ROAD CLOSURE DETAIL

FILE NAME = C-605-DET.dgn	USER NAME =	DESIGNED - DPA	REVISED -
MODEL NAME =		DRAWN - JDM	REVISED -
	PLOT SCALE =	CHECKED - DPA	REVISED -
	PLOT DATE =	DATE - 11/08/10	REVISED -

STATE OF ILLINOIS
DEPARTMENT OF TRANSPORTATION

ROAD CLOSURE DETAIL
KISHWAUKEE RIVER BRIDGE
WINNEBAGO COUNTY, IL

F.A.U. RTE.	SECTION	COUNTY	TOTAL SHEETS	SHEET NO.
5103	03-00337-00-BR	WINNEBAGO	66	15
FED. ROAD DIST. NO. 2 [ILLINOIS] FED. AID PROJECT			CONTRACT NO. 85523	

SCALE: SHEET NO. OF SHEETS STA. TO STA.