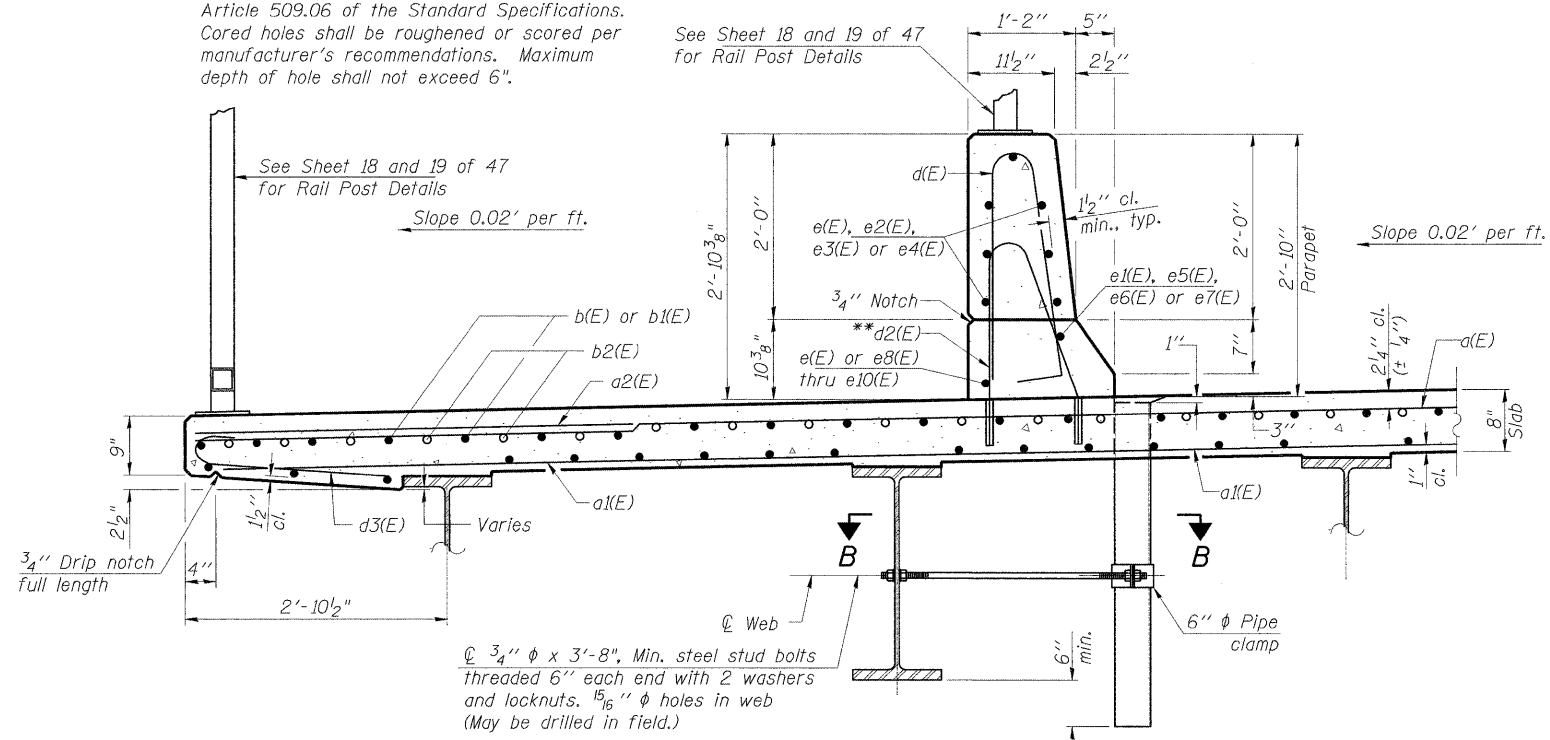
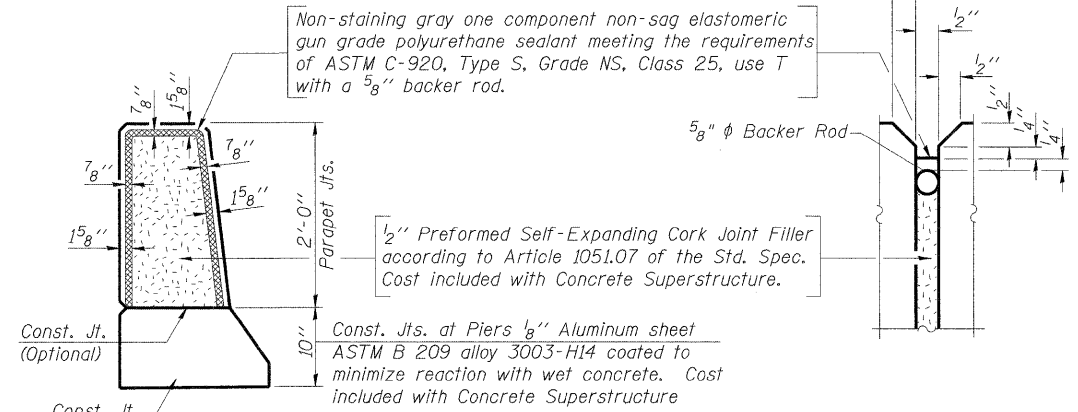


**INSIDE ELEVATION OF SOUTH PARAPET**

\*\*Core and set #5 d2(E) bar according to Article 509.06 of the Standard Specifications. Cored holes shall be roughened or scored per manufacturer's recommendations. Maximum depth of hole shall not exceed 6".

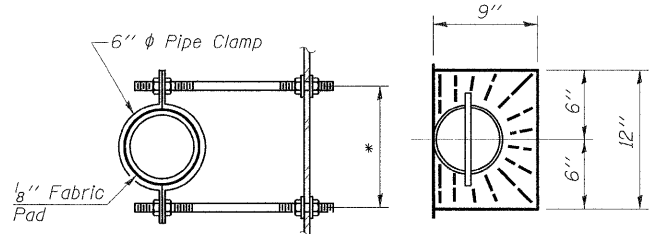


**SECTION THRU SOUTH PARAPET**



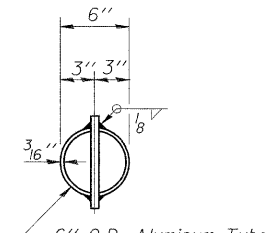
**PARAPET JOINT DETAILS**

Notes:  
 Drains shall be located clear of all diaphragms.  
 The exterior surfaces of the floor drains shall be painted with the finish coat as specified in the special provisions for Cleaning and Painting New Metal Structures. The exterior surfaces of the drains shall be cleaned according to the Society of Protective Coatings Spec. SSPC-SP1 prior to painting.  
 Fiberglass pipe shall conform to ASTM D 2996, with short-time rupture strength hoop tensile stress of 30,000 p.s.i. minimum.  
 Galvanize clamping device according to AASHTO M232. Cost of clamping device and inserts is included with Floor Drains.

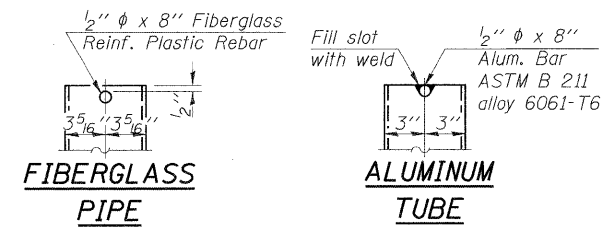


**SECTION B-B**  
 \* Dimension as required by Pipe Clamp

**TOP PLAN**



**TOP PLAN**  
 (Showing Aluminum Tube)



**MINIMUM BAR LAP**  
 (Parapet)  
 #4 bar = 2'-4"  
 #8 bar = 5'-5"

**SUPERSTRUCTURE DETAILS  
 STRUCTURE NUMBER 101-3100**

PROFESSIONAL DESIGN FIRM LICENSE #184-001084

© Copyright Hanson Professional Services Inc. 2010 Hanson Professional Services Inc.	JOB NO. 03R1807	SHEET NO. 9  47 SHEETS	F.A.U. RTE. 5103	SECTION 03-00337-00-BR	COUNTY Winnebago	TOTAL SHEETS 66	SHEET NO. 24
	DATE 10/26/10	CONTRACT NO. 85523		ILLINOIS FED. AID PROJECT			

10/26/2010  
 LKR/SMC/08/23/10  
 DRAWN MCM 10/25/10  
 REVIEWED LKR/SMC/10/26/10