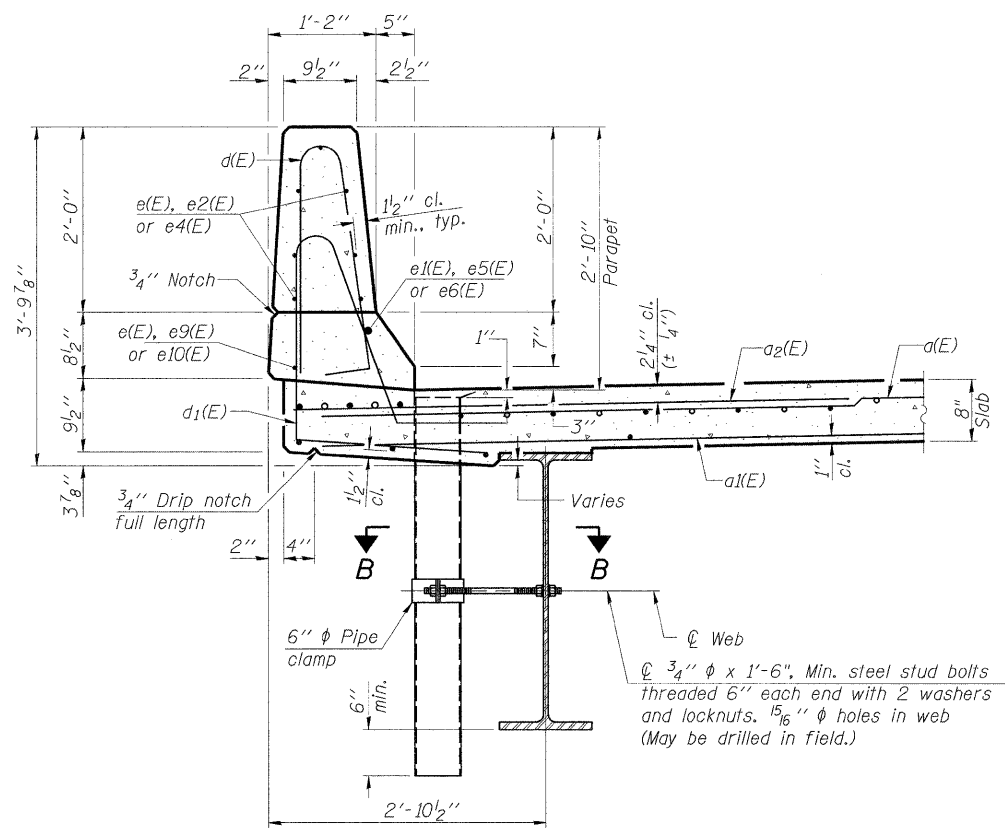
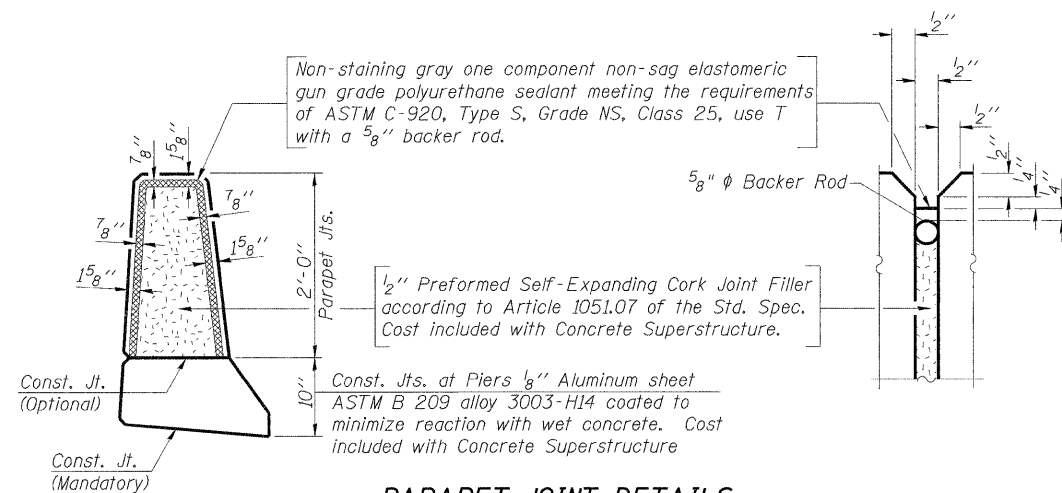


**INSIDE ELEVATION OF NORTH PARAPET**



**SECTION THRU NORTH PARAPET**

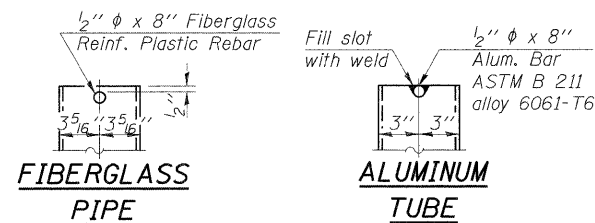
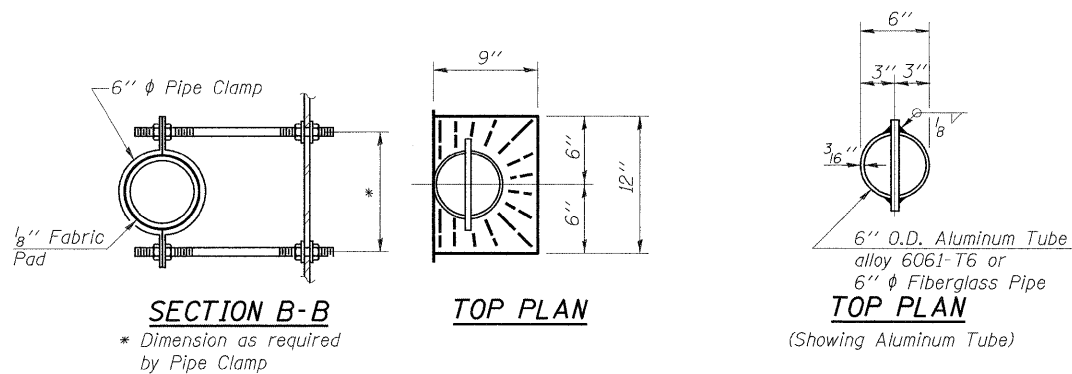


**PARAPET JOINT DETAILS**

**Notes:**  
 Drains shall be located clear of all diaphragms.  
 The exterior surfaces of the floor drains shall be painted with the finish coat as specified in the special provisions for Cleaning and Painting New Metal Structures. The exterior surfaces of the drains shall be cleaned according to the Society of Protective Coatings Spec. SSPC-SPI prior to painting.  
 Fiberglass pipe shall conform to ASTM D 2996, with short-time rupture strength hoop tensile stress of 30,000 p.s.i. minimum.  
 Galvanize clamping device according to AASHTO M232. Cost of clamping device and inserts is included with Floor Drains.

**MINIMUM BAR LAP**

(Parapet)  
 #4 bar = 2'-4"  
 #8 bar = 5'-5"



**SUPERSTRUCTURE DETAILS  
 STRUCTURE NUMBER 101-3100**

PROFESSIONAL DESIGN FIRM LICENSE #184-001084

© Copyright Hanson Professional Services Inc. 2010



JOB NO. 03R1807

DATE 10/26/10

SHEET NO. 10

47 SHEETS

F.A.U. RTE.	SECTION	COUNTY	TOTAL SHEETS	SHEET NO.
5103	03-00337-00-BR	Winnebago	66	25
CONTRACT NO. 85523				
ILLINOIS FED. AID PROJECT				

LAYOUT: JKR/SMA/08/23/10  
 DRAWN: MDM 10/25/10  
 REVIEWED: JKR/SMA/10/26/10