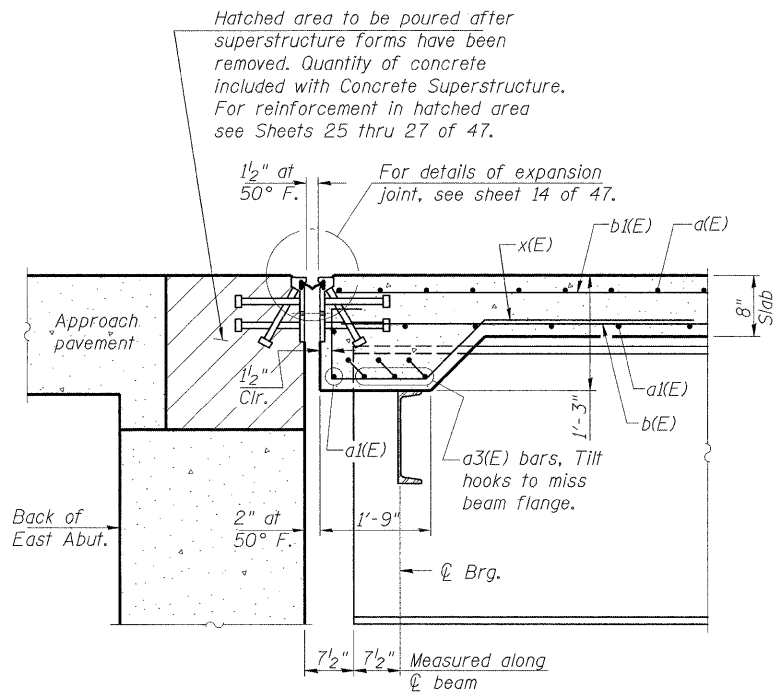
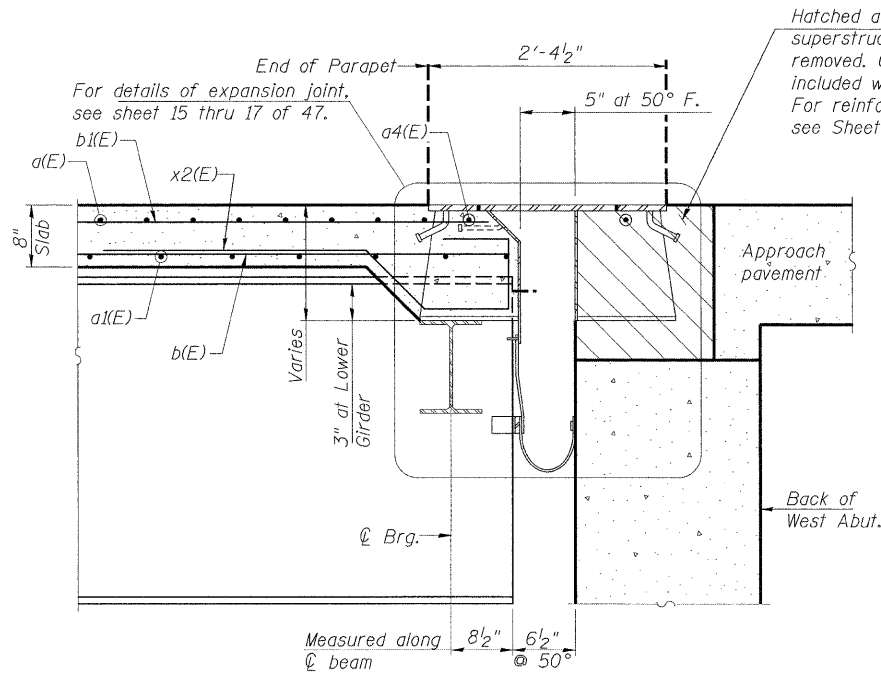


LAYOUT JAR/SWK/08/23/10
 DRAWN MCM 10/25/10
 REVIEWED JAR/SWK/10/26/10

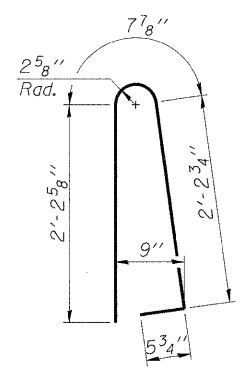


SECTION A-A

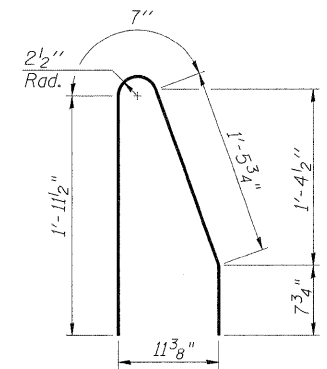


SECTION B-B

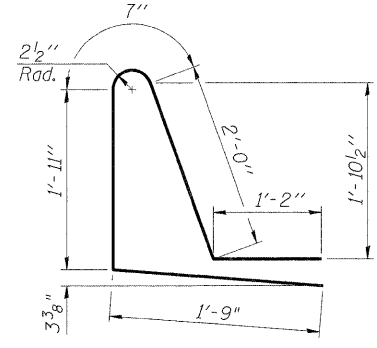
Reposition Thrustblock h bars in back of Joint Support Stool Anchor Bolts if required to maintain 1" cl. (+/-). Tie Thrustblock h bars to Anchor bolts.



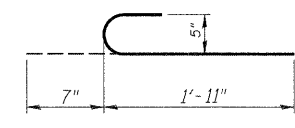
BAR d(E)



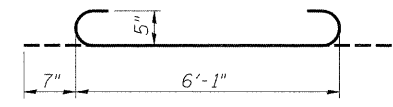
BAR d2(E) South Parapet



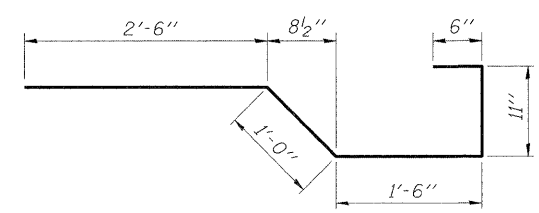
BAR d1(E)



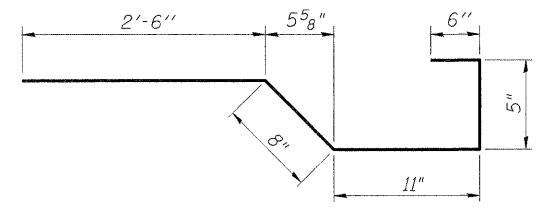
BAR d3(E)



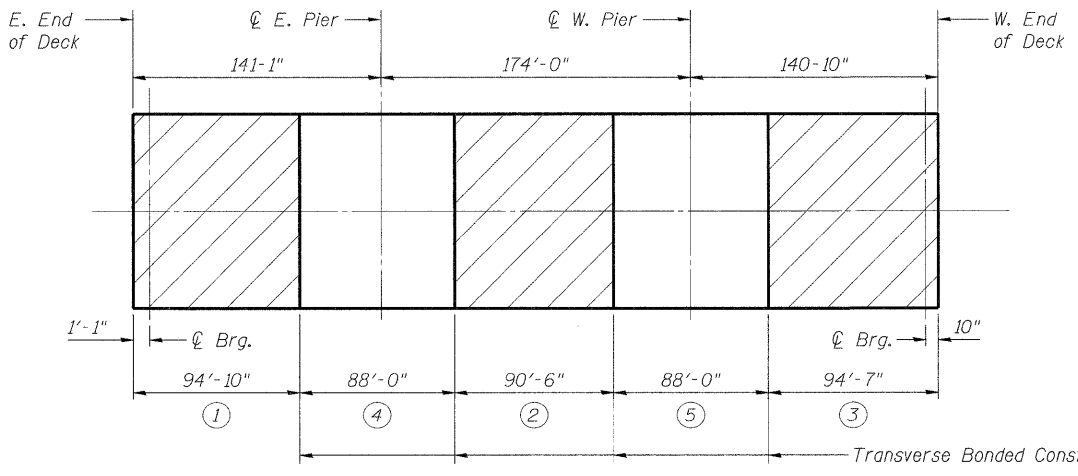
a3(E) BAR



BAR x(E)



BAR x2(E)



DECK POURING SEQUENCE

SUPERSTRUCTURE BILL OF MATERIAL

Bar	No.	Size	Length	Shape
a(E)	842	#5	43'-3"	—
a1(E)	609	#5	43'-0"	—
a2(E)	1682	#6	6'-6"	—
a3(E)	18	#5	7'-3"	—
a4(E)	6	#5	8'-11"	—
a5(E)				Not Used
b(E)	1362	#5	30'-11"	—
b1(E)	92	#5	16'-7"	—
b2(E)	264	#6	33'-11"	—
d(E)	995	#5	5'-7"	—
d1(E)	498	#5	7'-5"	—
d2(E)	497	#5	4'-8"	—
d3(E)	498	#5	2'-6"	—
e(E)	64	#4	19'-8"	—
e1(E)	8	#8	19'-8"	—
e2(E)	147	#4	17'-1"	—
e3(E)	49	#4	16'-10"	—
e4(E)	112	#4	16'-6"	—
e5(E)	12	#8	34'-3"	—
e6(E)	10	#8	31'-0"	—
e7(E)	4	#8	33'-11"	—
e8(E)	4	#4	31'-4"	—
e9(E)	12	#4	32'-0"	—
e10(E)	8	#4	35'-2"	—
x(E)	36	#5	6'-5"	—
x1(E)				Not Used
x2(E)	36	#5	5'-0"	—
Reinforcement Bars, Epoxy Coated	Pound		162,200	
Concrete Superstructure	Cu. Yds.		639.8	
Bridge Deck Grooving	Sq. Yds.		1414	
Protective Coat	Sq. Yds.		2584	
Floor Drains	Each		14	

Reinforcement bars designated (E) shall be epoxy coated.

The concrete deck shall be poured in the numerical order shown.

When the deck pour is stopped for the day at one or more of the Transverse Bonded Constr. Joints shown, the next pour shall not be made until both of the following requirements are met:

- At least 72 hrs. shall have elapsed from the end of the previous pour.
- The concrete strength shall have attained a minimum modulus of rupture of 650 psi or a minimum compressive strength of 3500 psi.

**SUPERSTRUCTURE DETAILS
STRUCTURE NUMBER 101-3100**

PROFESSIONAL DESIGN FIRM LICENSE #184-001084
 © Copyright Hanson Professional Services Inc. 2010

HANSON
Hanson Professional Services Inc.

JOB NO. 03R1807
DATE 10/26/10

SHEET NO. 11
47 SHEETS

F.A.U. RTE. 5103
SECTION 03-00337-00-BR
COUNTY Winnebago
TOTAL SHEETS 66
SHEET NO. 26
CONTRACT NO. 85523
ILLINOIS FED. AID PROJECT