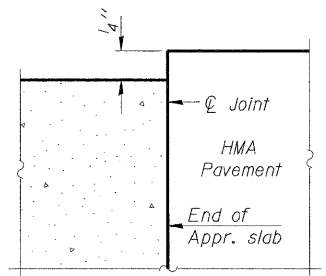
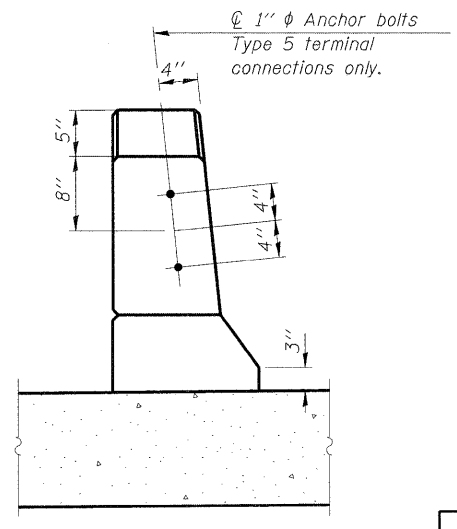


EAST APPROACH PLAN

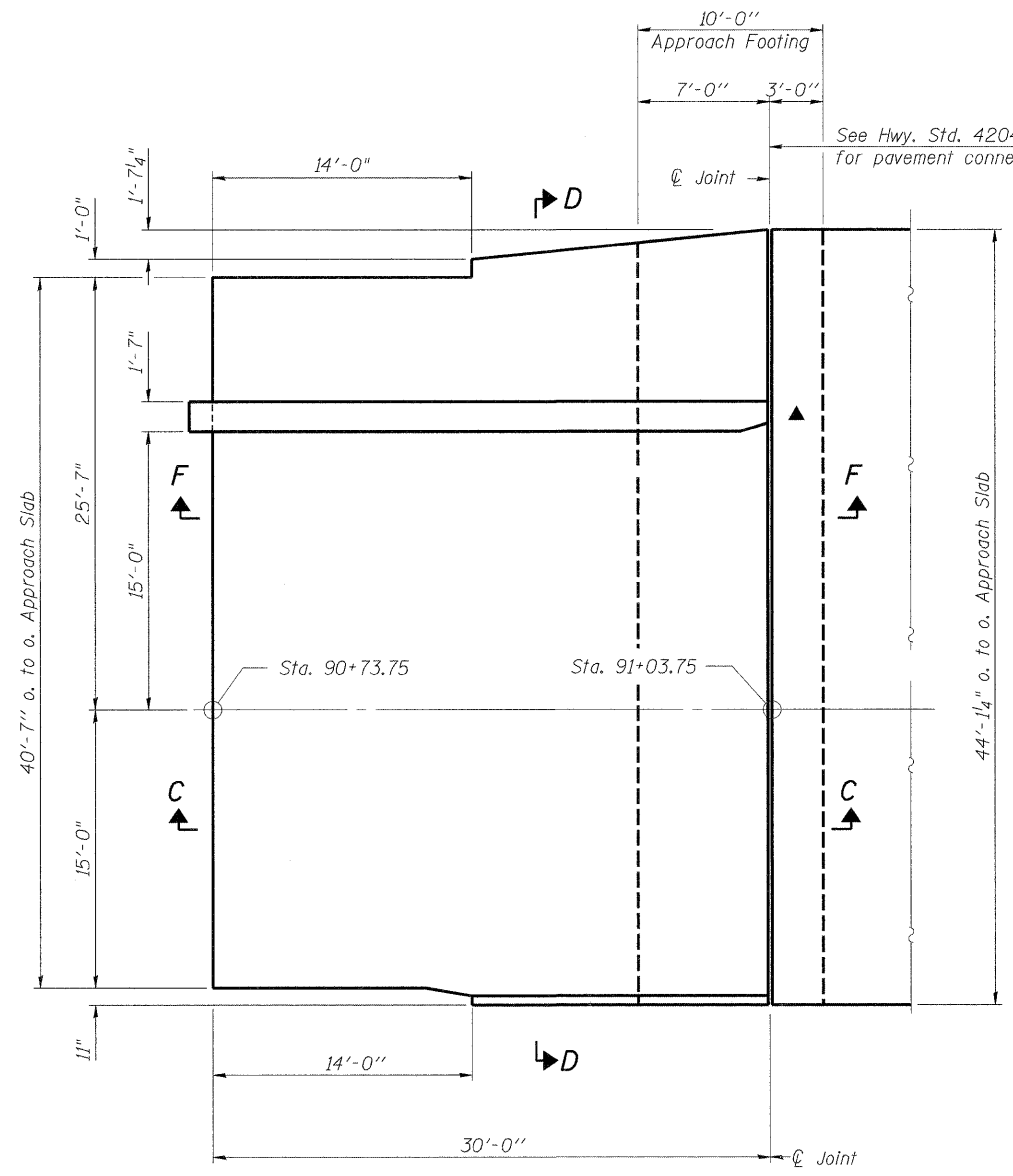
- * Tilt #9 b₄(E) bars as required to maintain clearance.
- ** Closed cell joint filler.
- ▲ Notch sleeper pad as required to facilitate the installation of the terminal barrier posts.



**FLEXIBLE PAVEMENT
DETAIL A**



VIEW B-B



WEST APPROACH PLAN

(For reinf. see East Approach Plan)

Notes:
See sheet 13 of 47 for Sections C-C & D-D and Views E-E & F-F.
Omit Type B Inlet in West Approach.

**BRIDGE APPROACH SLAB PLAN
STRUCTURE NUMBER 101-3100**

PROFESSIONAL DESIGN FIRM LICENSE #184-001084



JOB NO.	03R1807
DATE	10/26/10
SHEET NO.	12
TOTAL SHEETS	47

F.A.U. RTE.	SECTION	COUNTY	TOTAL SHEETS	SHEET NO.
5103	03-00337-00-BR	Winnebago	66	27
CONTRACT NO.			85523	
ILLINOIS FED. AID PROJECT				

10/26/2010
 JKR/SMK/DB/23/10
 10/25/10
 10/26/10
 10/26/10