

\*\* Bar Splicers for #5 (E) bars spaced as follows. Place 2 Bar Splicers between stools. Place 1 Bar Splicer between the Inside face of wingwall Foundation walls and Stool W1 and Stool W25. Abutment side only.

- Notes:
1. Work this Sheet with Sheets 16 and 17 of 47.
  2. The Joint Sliding Plate shall have a raised pattern.
  3. Finger Plates and Stools shall conform to the requirements of AASHTO M270 Grade 50.
  4. For Section B-B and Detail 1, see Sheet 16 of 47.
  5. For Section C-C and Details 2 & 3, see Sheet 17 of 47.

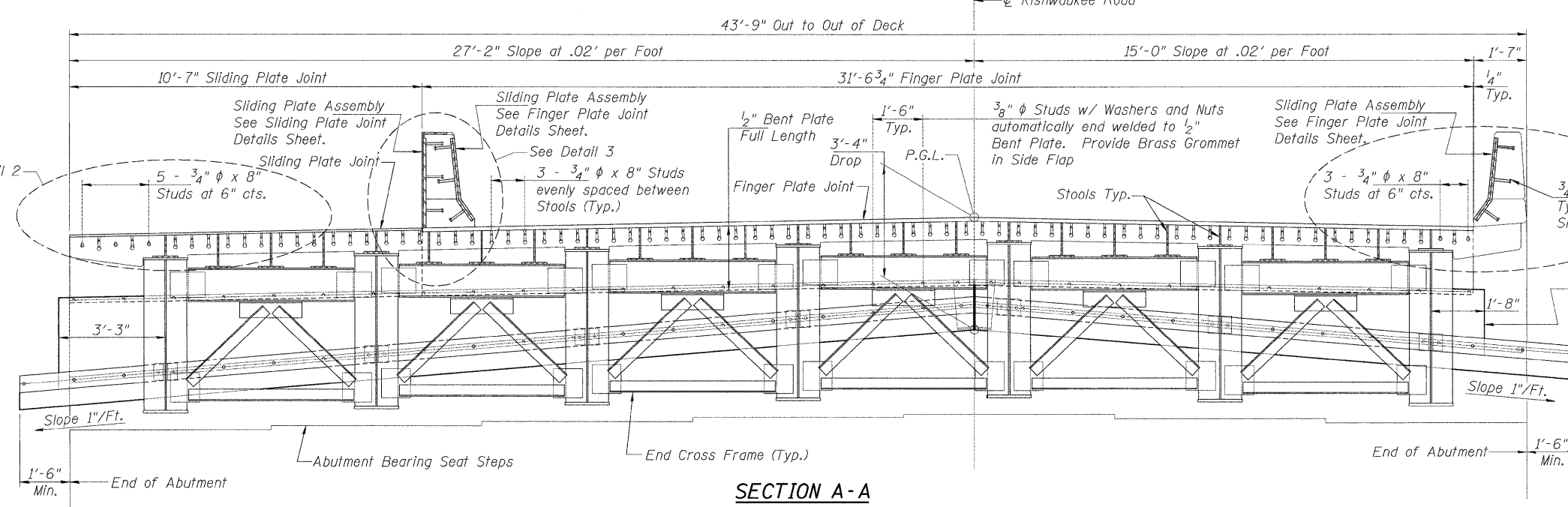
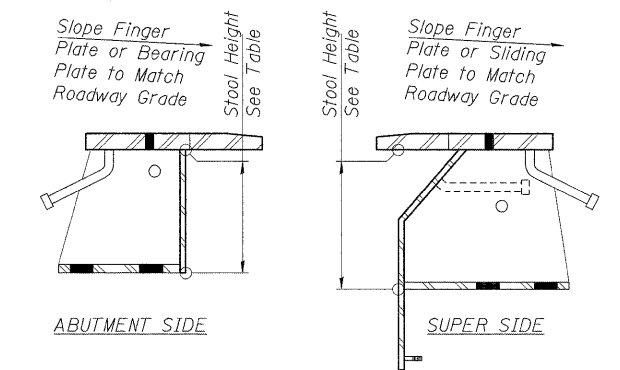


TABLE OF STOOL HEIGHTS

STOOL MARK (SUPER)	E1	E2	E3	E4	E5	E6	E7	E8	E9	E10	E11	E12	E13	E14	E15	E16	E17	E18	E19	E20	E21	E22	E23	E24	E25
STOOL HEIGHT	7 <sup>3</sup> / <sub>16</sub> "	11 <sup>5</sup> / <sub>16</sub> "	11 <sup>11</sup> / <sub>16</sub> "	12 <sup>1</sup> / <sub>16</sub> "	7 <sup>3</sup> / <sub>16</sub> "	11 <sup>7</sup> / <sub>16</sub> "	11 <sup>13</sup> / <sub>16</sub> "	12 <sup>3</sup> / <sub>16</sub> "	7 <sup>5</sup> / <sub>16</sub> "	11 <sup>7</sup> / <sub>16</sub> "	11 <sup>13</sup> / <sub>16</sub> "	12 <sup>3</sup> / <sub>16</sub> "	7 <sup>5</sup> / <sub>16</sub> "	11 <sup>7</sup> / <sub>16</sub> "	11 <sup>13</sup> / <sub>16</sub> "	12 <sup>3</sup> / <sub>16</sub> "	7 <sup>5</sup> / <sub>16</sub> "	12 <sup>3</sup> / <sub>16</sub> "	11 <sup>13</sup> / <sub>16</sub> "	11 <sup>7</sup> / <sub>16</sub> "	7 <sup>5</sup> / <sub>16</sub> "	12 <sup>3</sup> / <sub>16</sub> "	11 <sup>13</sup> / <sub>16</sub> "	11 <sup>7</sup> / <sub>16</sub> "	7 <sup>5</sup> / <sub>16</sub> "
STOOL MARK (ABUT.)	W1	W2	W3	W4	W5	W6	W7	W8	W9	W10	W11	W12	W13	W14	W15	W16	W17	W18	W19	W20	W21	W22	W23	W24	W25
STOOL HEIGHT	11 <sup>3</sup> / <sub>8</sub> "	11 <sup>3</sup> / <sub>8</sub> "	11 <sup>3</sup> / <sub>8</sub> "	11 <sup>3</sup> / <sub>8</sub> "	12 <sup>7</sup> / <sub>8</sub> "	12 <sup>7</sup> / <sub>8</sub> "	12 <sup>7</sup> / <sub>8</sub> "	12 <sup>7</sup> / <sub>8</sub> "	13 <sup>1</sup> / <sub>4</sub> "	13 <sup>1</sup> / <sub>4</sub> "	13 <sup>1</sup> / <sub>4</sub> "	13 <sup>1</sup> / <sub>4</sub> "	15 <sup>1</sup> / <sub>4</sub> "	15 <sup>1</sup> / <sub>4</sub> "	15 <sup>1</sup> / <sub>4</sub> "	15 <sup>1</sup> / <sub>4</sub> "	15 <sup>1</sup> / <sub>4</sub> "	15 <sup>1</sup> / <sub>4</sub> "	15 <sup>1</sup> / <sub>4</sub> "	15 <sup>1</sup> / <sub>4</sub> "	15 <sup>1</sup> / <sub>4</sub> "	13 <sup>1</sup> / <sub>4</sub> "	13 <sup>1</sup> / <sub>4</sub> "	13 <sup>1</sup> / <sub>4</sub> "	13 <sup>1</sup> / <sub>4</sub> "

FINGER PLATE JOINT PLAN  
STRUCTURE NUMBER 101-3100

PROFESSIONAL DESIGN FIRM LICENSE #184-001084

© Copyright Hanson Professional Services Inc. 2010

**HANSON**  
Hanson Professional Services Inc.

JOB NO. 03R1807  
DATE 10/26/10

SHEET NO. 15  
47 SHEETS

F.A.U. RTE. 5103	SECTION 03-00337-00-BR	COUNTY Winnebago	TOTAL SHEETS 66	SHEET NO. 30
CONTRACT NO. 85523			ILLINOIS FED. AID PROJECT	

10/26/2010  
 JKR/SWK/08/23/10  
 MOM 10/25/10  
 REVIEWED JKR/SWK/10/26/10