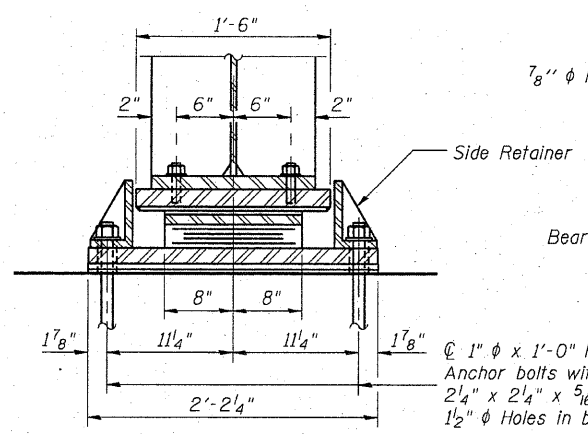
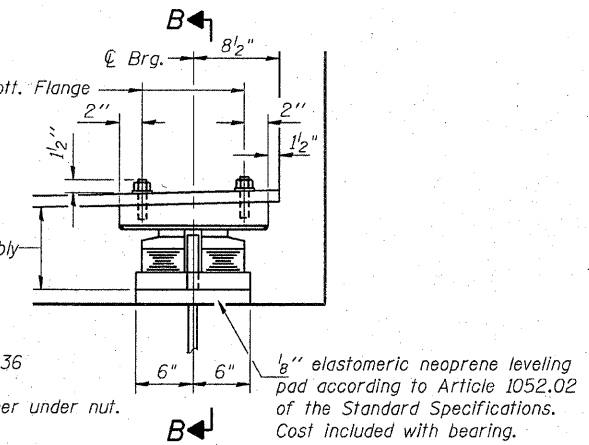


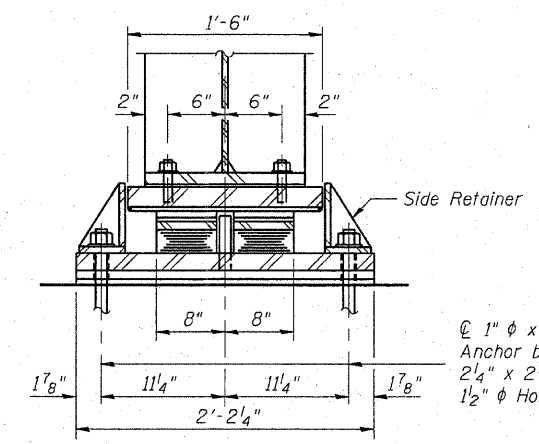
**ELEVATION AT EAST ABUT.**



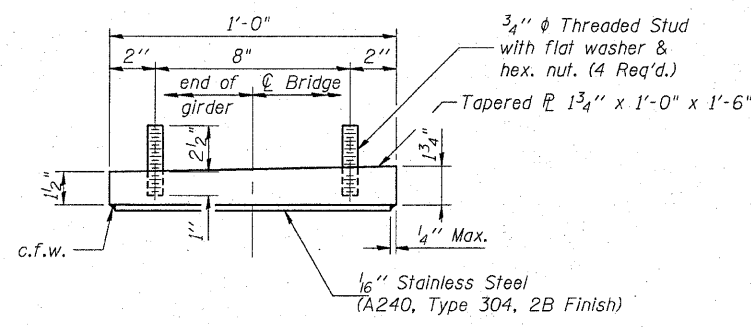
**SECTION A-A**



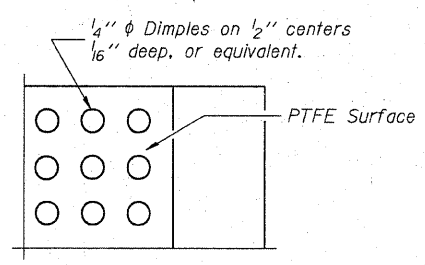
**ELEVATION AT WEST ABUT.**



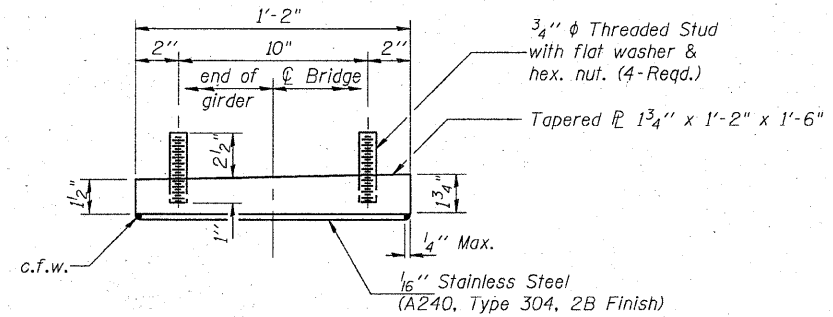
**SECTION B-B**



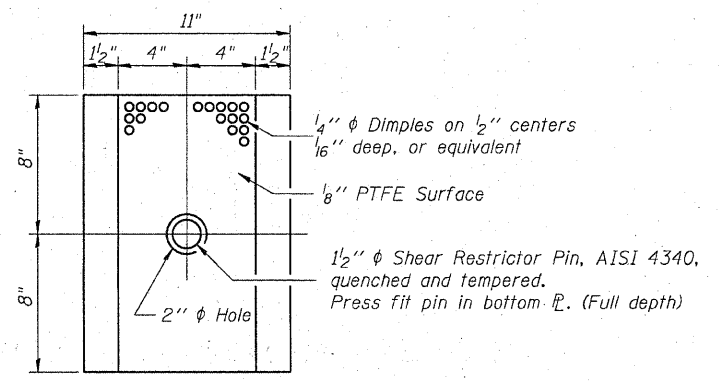
**TYPE II TOP BEARING ASSEMBLY**



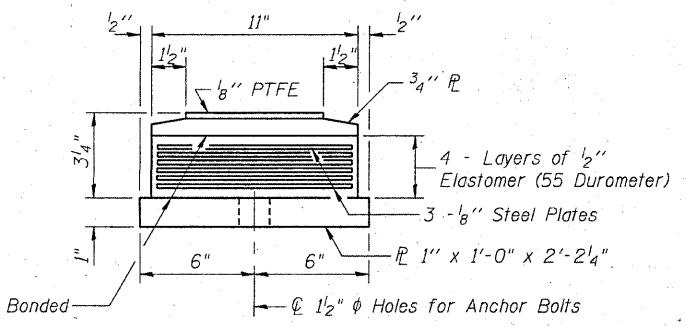
**PLAN-PTFE SURFACE**



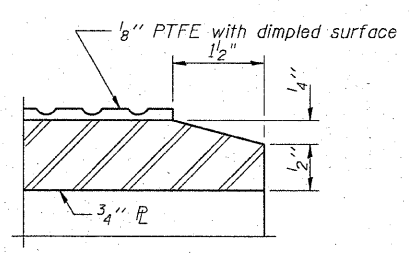
**TYPE III TOP BEARING ASSEMBLY**



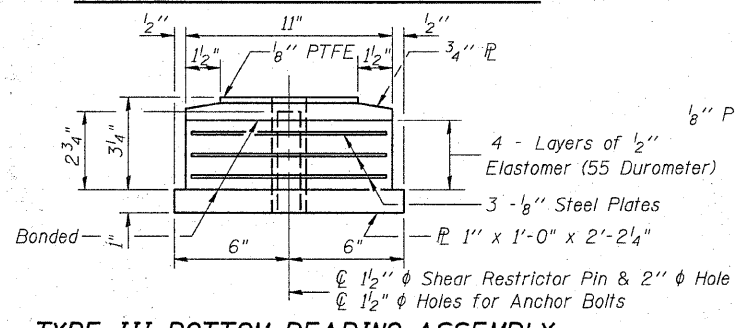
**PLAN-PTFE ELASTOMERIC BRG.**



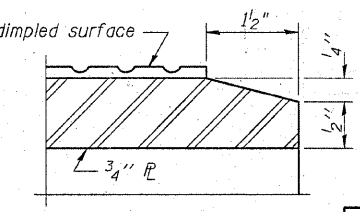
**TYPE II BOTTOM BEARING ASSEMBLY**



**SECTION THRU PTFE**



**TYPE III BOTTOM BEARING ASSEMBLY**



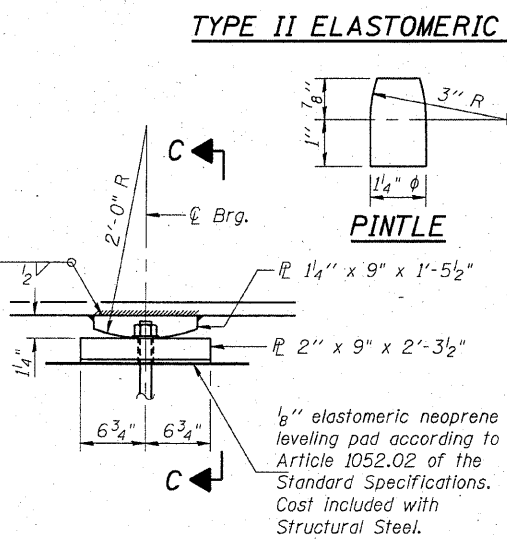
**SECTION THRU PTFE**

**BILL OF MATERIAL**

Item	Unit	Total
Elastomeric Bearing Assembly Type II	Each	7
Elastomeric Bearing Assembly Type III	Each	7
Anchor Bolts, 1"	Each	28
Anchor Bolts, 1 1/2"	Each	14

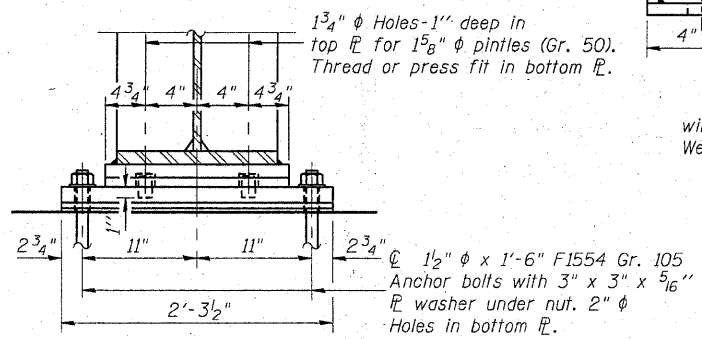
Notes:  
 Anchor bolts at fixed bearings may be built into the masonry. See Sheet 31 of 47 for Anchor Bolt location.  
 The 1/8" PTFE Sheet shall be bonded directly to the top steel plate with a two-component, medium viscosity epoxy resin, conforming to the requirements of the Federal Specification MMM-A-134, Type I. The bond agent shall be applied on the full area of the contact surfaces.  
 Bonding of 1/8" PTFE Sheet during vulcanizing process will be permitted provided the process and method of adjusting assembly height is approved by the Engineer.  
 All structural steel bearing plates and pintles for low profile fixed bearings and Elastomeric Bearing Assemblies shall be AASHTO M270, Grade 50.

**ELASTOMERIC AND FIXED BEARING DETAILS  
 STRUCTURE NUMBER 101-3100**

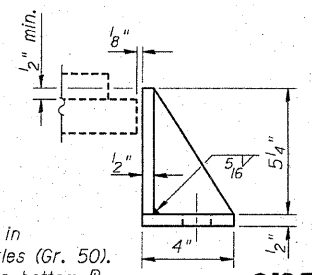


**ELEVATION AT PIER 1**

**LOW PROFILE FIXED BEARING**

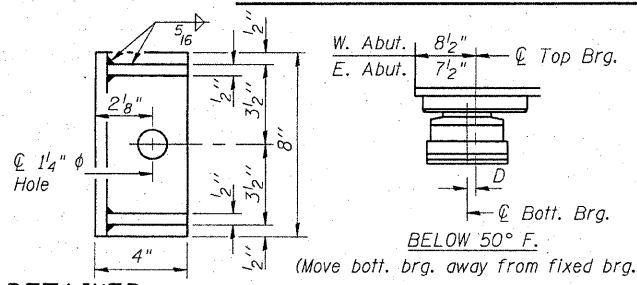


**SECTION C-C**



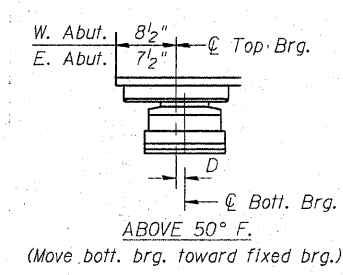
**SIDE RETAINER**

Equivalent rolled angle with stiffeners will be allowed in lieu of welded plates. Weight included with Structural Steel.



**SETTING ANCHOR BOLTS AT EXP. BRG.**

D = 1/8" per each 100' of expansion for every 15° temp. change from the normal temp. of 50° F.



**SETTING ANCHOR BOLTS AT EXP. BRG.**

(Move bott. brg. toward fixed brg.)

PROFESSIONAL DESIGN FIRM LICENSE #184-001084

© Copyright Hanson Professional Services Inc. 2010



JOB NO. 03R1807  
 SHEET NO. 23  
 DATE 11/08/10  
 47 SHEETS

F.A.U. RTE.	SECTION	COUNTY	TOTAL SHEETS	SHEET NO.
5103	03-00337-00-BR	Winnebago	66	38
CONTRACT NO. 85523				
ILLINOIS FED. AID PROJECT				

LAYOUT: JRF/SJM/08/23/10  
 DRAWN: MCM 10/25/10  
 REVIEWED: JRF/SJM/10/26/10  
 10/23/2010  
 A021060-010007-StructSteel-021-Rev01.dwg