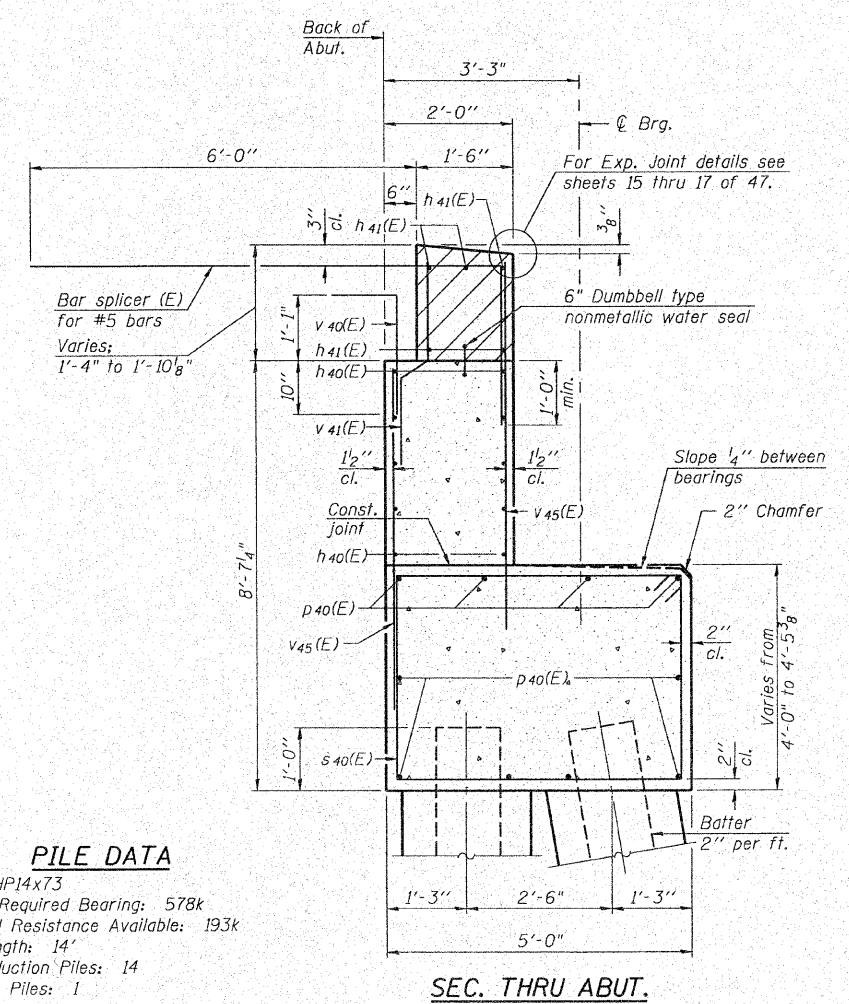


\* Elev's given at back of thrust block.  
 \*\* See Sheet 15 of 47 for layout of Bar Splicers



**PILE DATA**  
 Type: HP14x73  
 Nominal Required Bearing: 578k  
 Factored Resistance Available: 193k  
 Est. Length: 14'  
 No. Production Piles: 14  
 No. Test Piles: 1

Notes:  
 Hatched area to be poured after superstructure falsework has been removed. Quantity of concrete included with Concrete Superstructure.  
 Space reinforcement in cap to miss anchor bolts.  
 Pour steps monolithically with cap.

**WEST ABUTMENT  
 STRUCTURE NUMBER 101-3100**

PROFESSIONAL DESIGN FIRM LICENSE #184-001084		F.A.U. RTE.	SECTION	COUNTY	TOTAL SHEETS	SHEET NO.
© Copyright Hanson Professional Services Inc. 2010		03R1807	5103	Winnebago	66	43
DATE 11/08/10		SHEET NO. 28		CONTRACT NO. 85523		
47 SHEETS		ILLINOIS FED. AID PROJECT				

