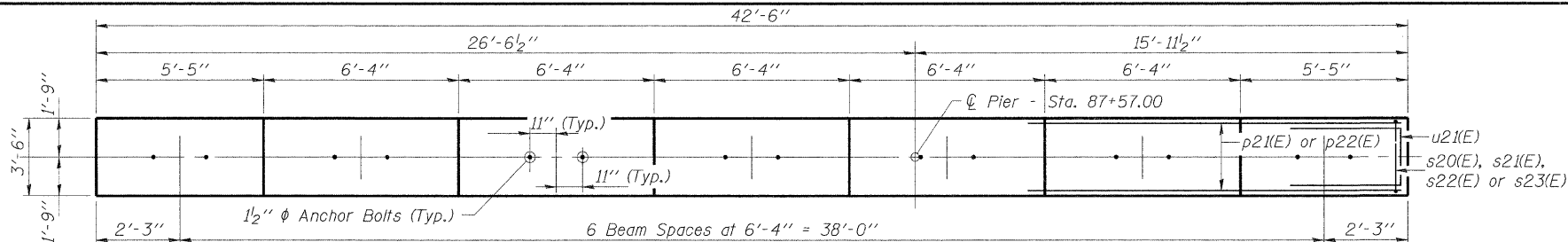


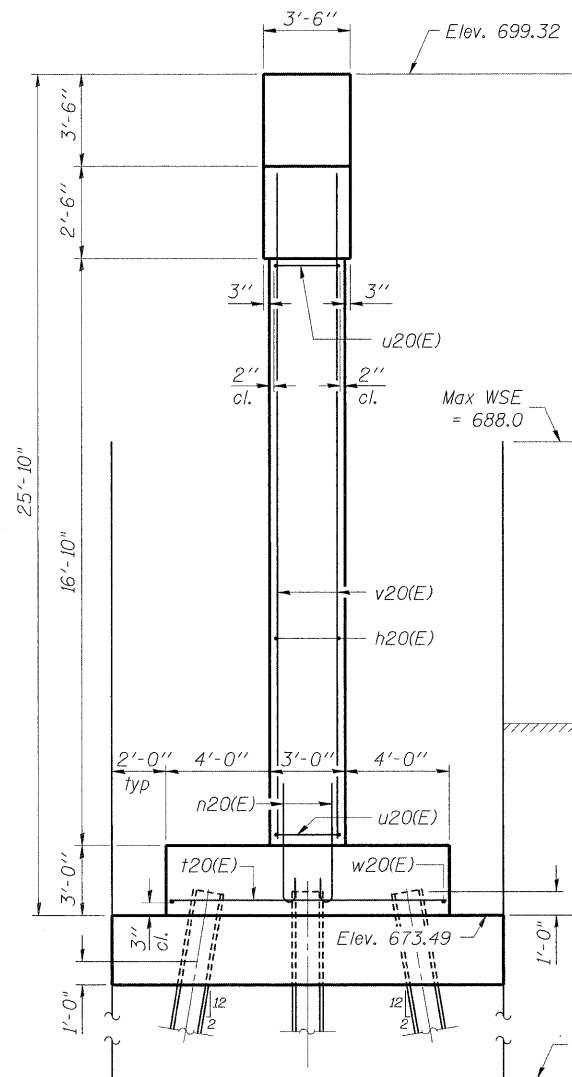
Notes:
 Space reinforcement in cap to miss anchor bolts.
 Pour steps monolithically with cap.
 For details of piles, see sheet 34 of 47.

PILE DATA

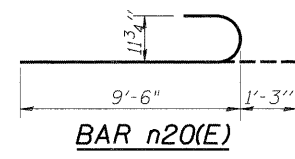
Type: HP14x73
 Nominal Required Bearing: 578K
 Allowable Resistance Available: 193K
 Est. Length: 44'
 No. Production Piles: 20
 No. Test Piles: 1



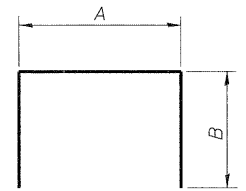
TOP PLAN



ELEVATION
(Looking West)



BAR n20(E)



BARS

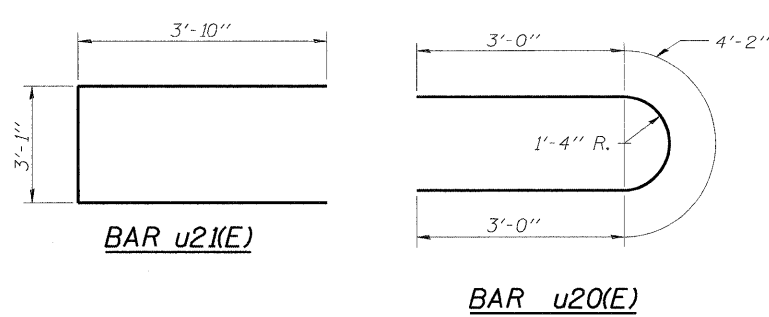
PIER BILL OF MATERIAL

Bar	No.	Size	Length	Shape
h20(E)	34	#5	24'-6"	—
h21(E)	4	#6	36'-6"	—
h22(E)	6	#6	42'-2"	—
n20(E)	108	#9	10'-9"	U
p20(E)	8	#6	10'-10"	—
p21(E)	12	#9	42'-2"	—
p22(E)	4	#5	12'-4"	—
p23(E)	4	#6	28'-0"	—
s20(E)	24	#5	8'-4"	□
s21(E)	32	#5	9'-4"	□
s22(E)	48	#5	10'-4"	□
s23(E)	26	#5	13'-2"	□
s24(E)	13	#4	6'-2"	□
t20(E)	46	#9	10'-6"	—
u20(E)	34	#5	10'-2"	U
u21(E)	8	#6	10'-9"	U
v20(E)	108	#9	20'-10"	—
w20(E)	12	#5	29'-6"	—
Cofferdam Excavation		Cu. Yd.	207.8	
Concrete Structures		Cu. Yd.	120.1	
Reinforcement Bars, Epoxy Coated		Pound	19,100	
Furnishing - Piles, HP14x73		Foot	880	
Driving Piles		Foot	880	
Test Pile, HP14x73		Each	1	
Seal Coat Concrete		Cu. Yd.	56.7	
Pile Shoes		Each	20	

A & B DIMENSIONS

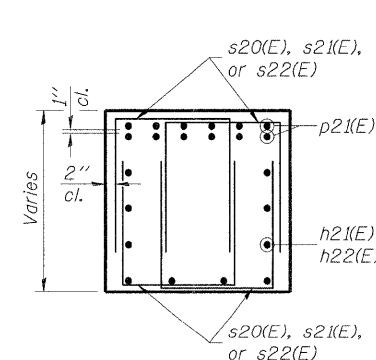
Bar	A	B
s20(E)	2'-0"	3'-2"
s21(E)	2'-0"	3'-8"
s22(E)	2'-0"	4'-2"
s23(E)	3'-2"	5'-0"
s24(E)	3'-2"	1'-6"

END VIEW
(Looking North)

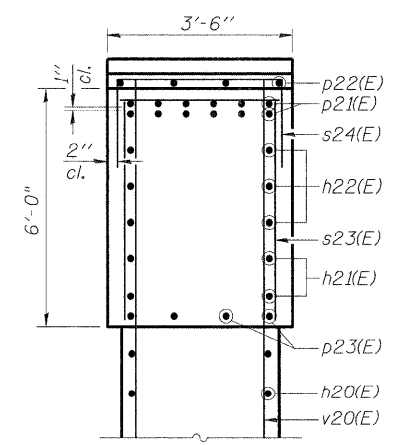


BAR u21(E)

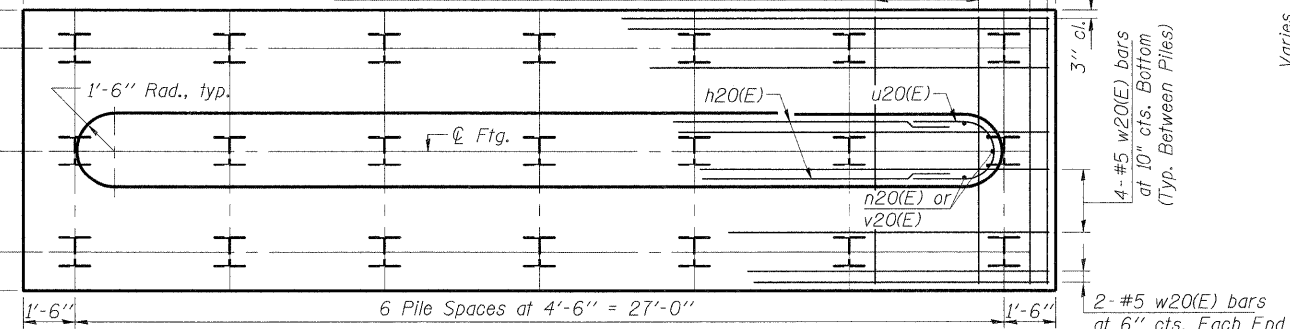
BAR u20(E)



SECTION A-A



SECTION B-B



FOOTING PLAN

PIER #1 - EAST
STRUCTURE NUMBER 101-3100

PROFESSIONAL DESIGN FIRM LICENSE #184-001084
 © Copyright Hanson Professional Services Inc. 2010



JOB NO. 03R1807
 SHEET NO. 31
 DATE 10/26/10
 47 SHEETS

F.A.U. RTE.	SECTION	COUNTY	TOTAL SHEETS	SHEET NO.
5103	03-00337-00-BR	Winnebago	66	46
CONTRACT NO. 85523				
ILLINOIS FED. AID PROJECT				

10/26/2010
 LKR/SMK 08/23/10
 DRAWN MKM 10/25/10
 REVIEWED LKR/SMK 10/26/10