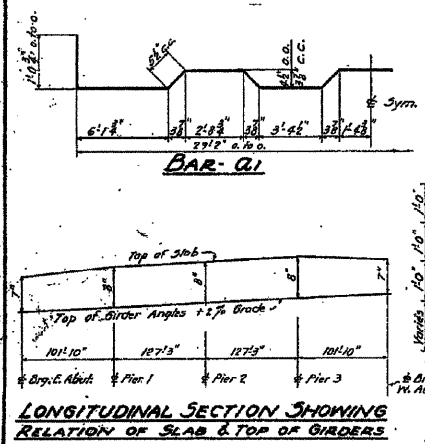
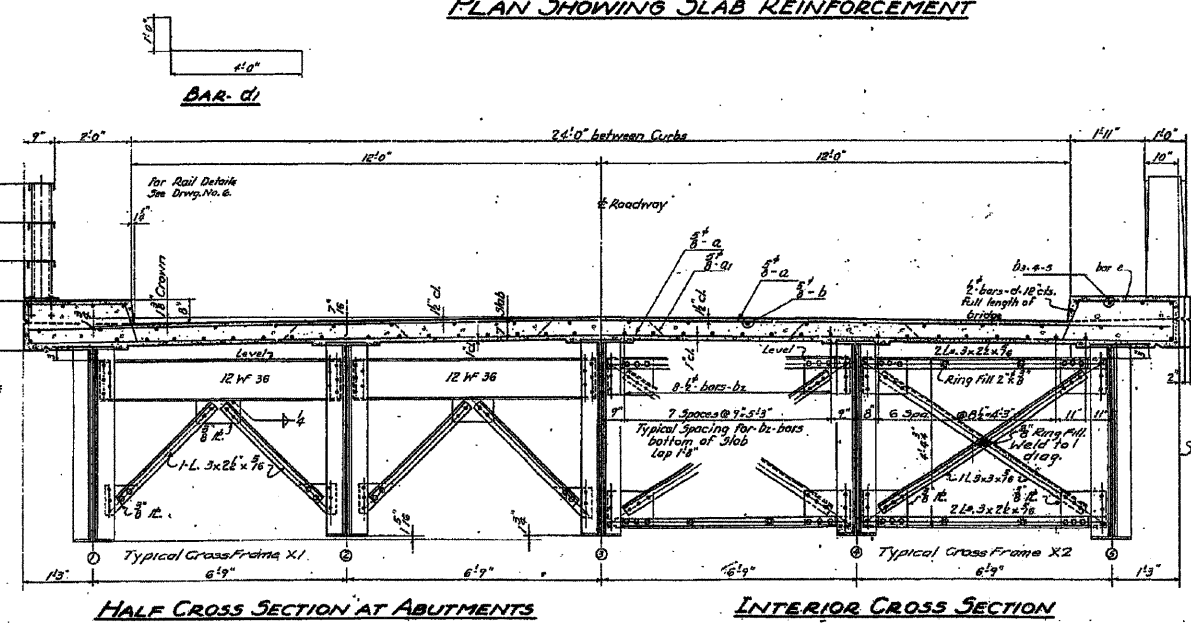


PLAN SHOWING SLAB REINFORCEMENT

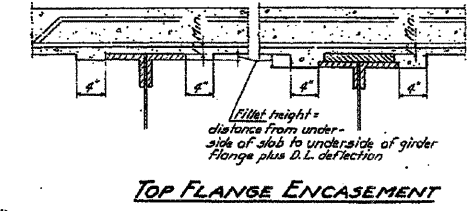


LONGITUDINAL SECTION SHOWING RELATION OF SLAB & TOP OF GIRDERS

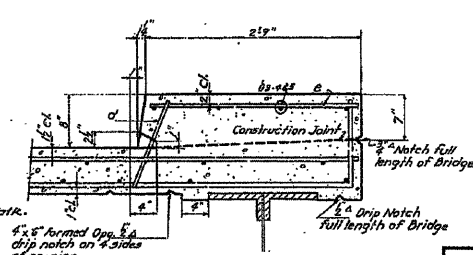


HALF CROSS SECTION AT ABUTMENTS

INTERIOR CROSS SECTION



TOP FLANGE ENCASEMENT



WALK & FORMED OPENING

BILL OF MATERIALS

BAR NO.	SIZE	LENGTH	QTY
a	7/8"	29'-5"	-
b	3/4"	27'-6"	-
c	3/4"	32'-0"	-
d	1/2"	37'-0"	-
e	1/2"	27'-9"	-
f	1/2"	29'-9"	-
g	1/2"	13'-6"	-
h	1/2"	26'-0"	-
i	1/2"	11'-0"	-
j	1/2"	51'-0"	-
k	1/2"	24'-0"	-
l	1/2"	2'-6"	-

Class 'C' Concrete	Cu Yds.	2
Handrail Concrete	Cu Yds.	1
Reinforcement Bars	Lbs.	6
C.I. Frames & Grates	Each	1
Structural Steel	Lbs.	67

Note: Cut slab bars in field of C.I. and Grates.

SLAB DETAILS
KISHWAUKEE RIVER BRIDGE
PROJECT 5-64(G)
FA.S. RTE. 88 SA. RTE. 3
SECTION 75-B-F
WINNEBAGO COUNTY
STATION 88+57

ALFRED BENESECH & ASSOCIATES
 CONSULTING ENGINEERS
 38 EAST ADAMS ST. CHICAGO 3, ILL.

APPROVED: *[Signature]*
 COUNTY SUPERINTENDENT OF HIGHWAYS
 EXAMINED: *[Signature]*
 PASSED: *[Signature]*
 APPROVED: *[Signature]*
 CHIEF HIGHWAY ENGINEER

EXISTING DRAWING
 STRUCTURE NUMBER 101-3100

FOR REFERENCE ONLY

PROFESSIONAL DESIGN FIRM LICENSE #184-001084

© Copyright Hanson Professional Services Inc. 2010



JOB NO. 03R1807
 SHEET NO. 39
 DATE 10/26/10
 47 SHEETS

F.A.U. RTE. 5103	SECTION 03-00337-00-BR	COUNTY Winnebago	TOTAL SHEETS 66	SHEET NO. 54
ILLINOIS FED. AID PROJECT			CONTRACT NO. 85523	

LAYOUT: MFD/SJK 08/23/10
 DRAWN: MFD 10/25/10
 REVIEWED: MFD/SJK 10/26/10