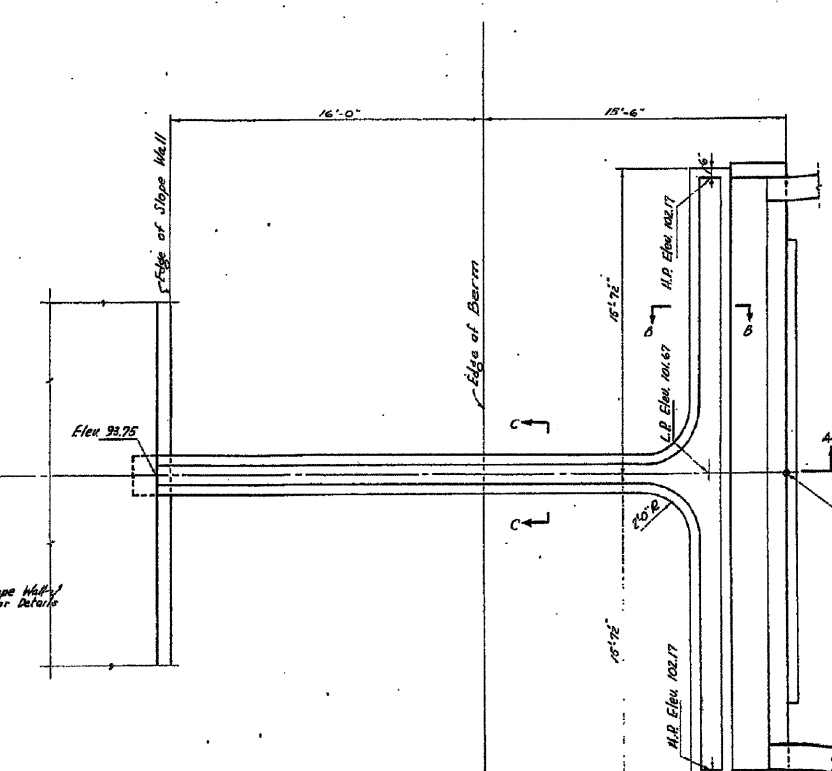
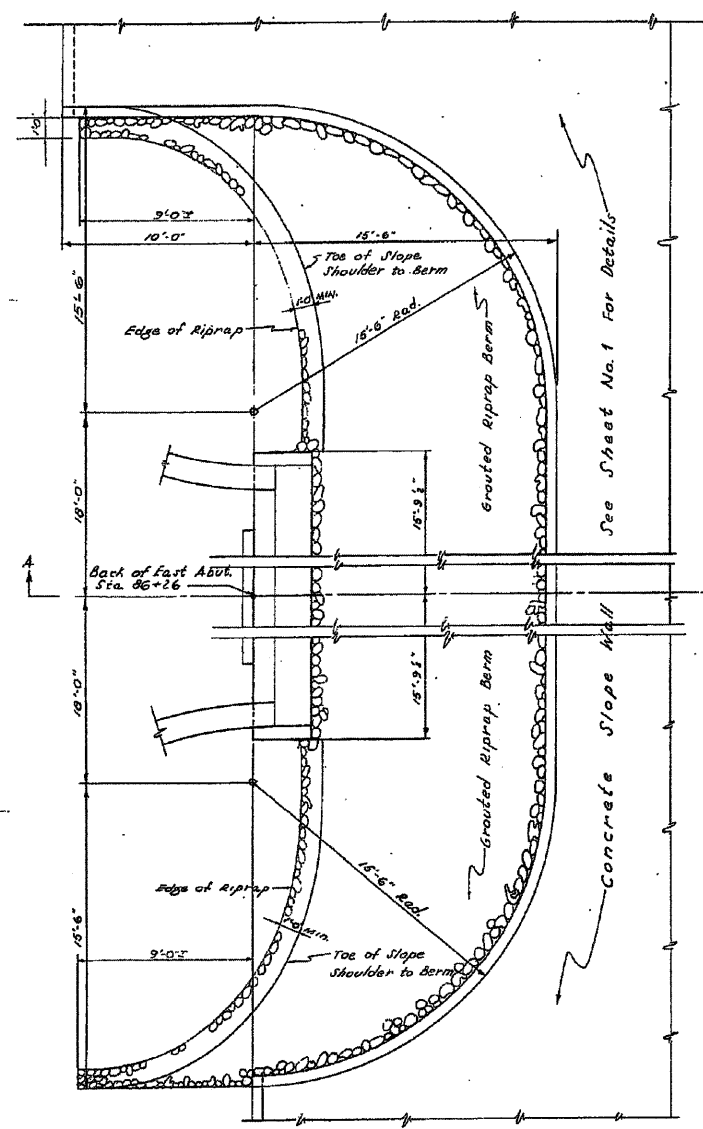
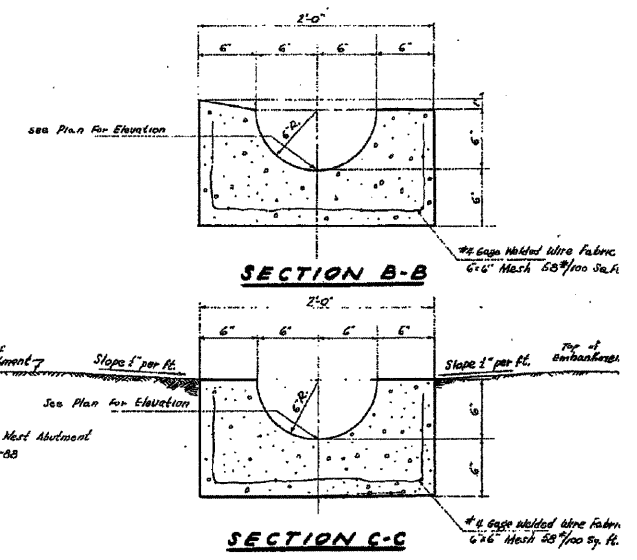


| | | | | |
|---------|-----|-----------|----|---|
| FRS. 88 | 75B | Winnebago | 14 | 8 |
| | 78F | | | |

SHEET No. 8
SHEETS 18

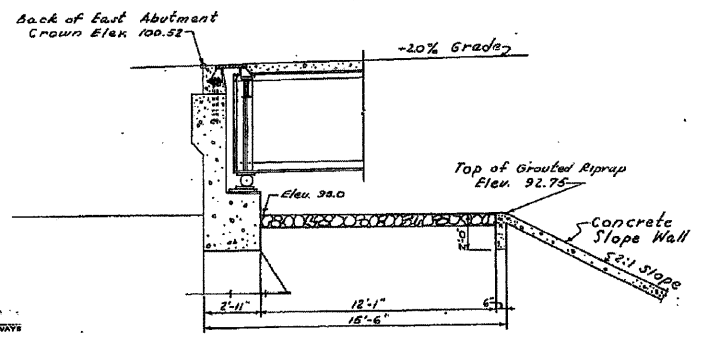


PLAN OF GUTTER AND GROUTED RIPRAP BERM AT ABUTMENTS

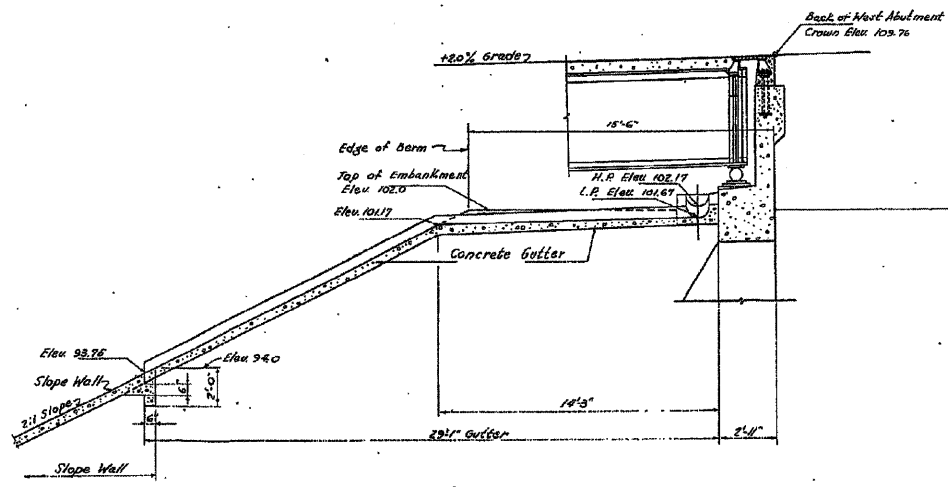


NOTES

Concrete Gutters shall be class "X" concrete. Estimated quantity is 66 cu. yds. included in quantity of class "X" concrete in Bill of Materials on Sheet No. 1 of 12. Cost of furnishing welded wire fabric shall be included in contract unit prices for class "X" concrete. Estimated quantity of grouted riprap - 85 cu. yds.



LONGITUDINAL SECTION A-A



APPROVED COUNTY SUPERINTENDENT OF HIGHWAYS
EXAMINED BRIDGE ENGINEER
PASSED DIVISION OF DESIGN
APPROVED CHIEF HIGHWAY ENGINEER

ALFRED BENESCH & ASSOCIATES
CONSULTING ENGINEERS
35 EAST ADAMS ST. CHICAGO 3, ILL.

GROUTED RIPRAP AND CONCRETE GUTTER AT ABUTMENTS KISHWAUKEE RIVER BRIDGE PROJECT S-64(3) F.A.S. RTE 88 S.A. RTE. 3 SECTION 75-B WINNEBAGO COUNTY STATION 88+57

EXISTING DRAWING
STRUCTURE NUMBER 101-3100

FOR REFERENCE ONLY

PROFESSIONAL DESIGN FIRM LICENSE #184-001084

© Copyright Hanson Professional Services Inc. 2010



JOB NO. 03R1807
SHEET NO. 42
DATE 10/26/10

| | | | | |
|--------------------|------------------------|------------------|---------------------------|--------------|
| F.A.U. RTE. 5103 | SECTION 03-00337-00-BR | COUNTY Winnebago | TOTAL SHEETS 66 | SHEET NO. 57 |
| CONTRACT NO. 85523 | | | ILLINOIS FED. AID PROJECT | |

LAYOUT LKR/SAM 08/23/10
DRAWN MGN 10/25/10
REVIEWED LKR/SAM 10/26/10