

SECTION THRU ABUTMENT & INSIDE ELEVATION OF RAIL POSTS

- Indicates 10 Ton Pile. Estimated Length 35'-0" - 2 Required. Treated.
- Indicates 18 Ton Pile. Estimated Length 25'-0" - 16 Required. Untreated.
- Indicates 20 Ton Pile. Estimated Length 25'-0" - 16 Required. Untreated.

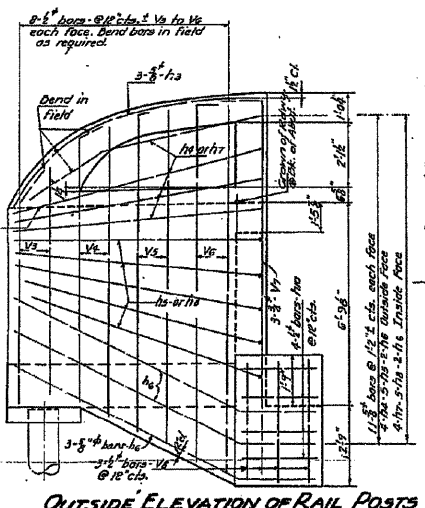
Note: For dimensions not shown see Truss Elevation of Rail Posts. Horiz. bars to be bent in field for curvature of rail post.

APPROVED: *[Signature]*
COUNTY SUPERVISOR OF HIGHWAYS

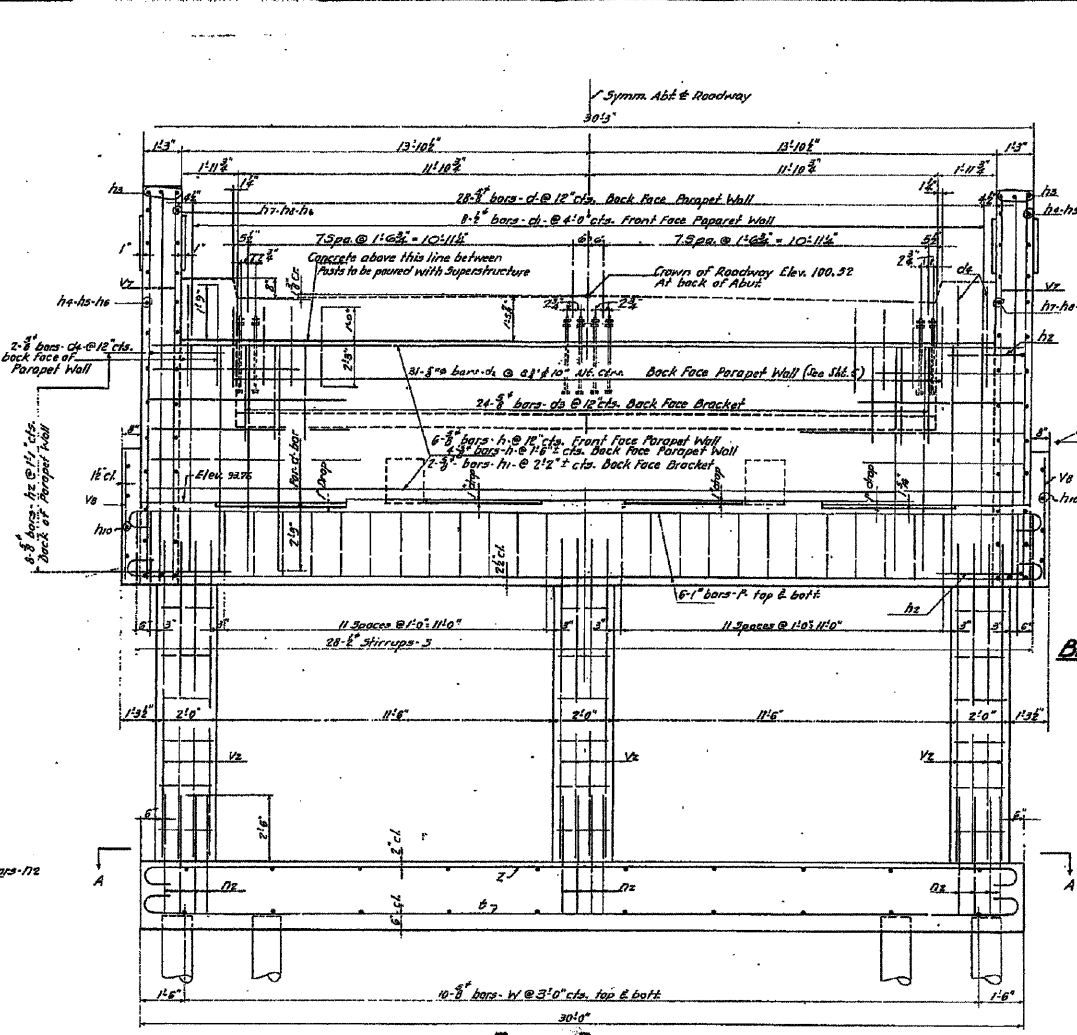
EXAMINED: *[Signature]*
BRIDGE ENGINEER

PASSED: *[Signature]*
DIVISION OF DESIGN

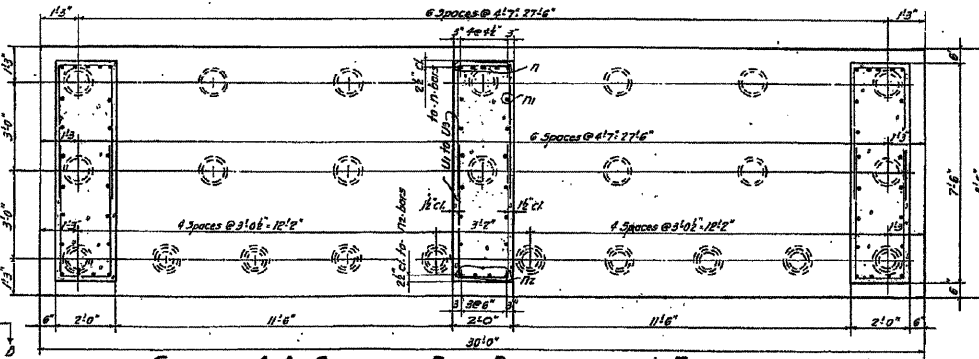
APPROVED: *[Signature]*
CHIEF HIGHWAY BUSINESS



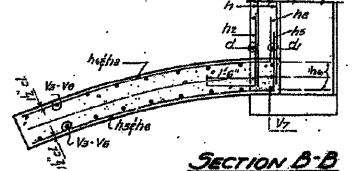
OUTSIDE ELEVATION OF RAIL POSTS



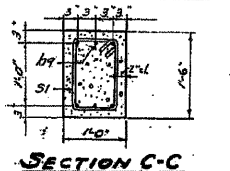
FRONT ELEVATION



SECTION A-A SHOWING POST REINFORCING & FOOTING



SECTION B-B

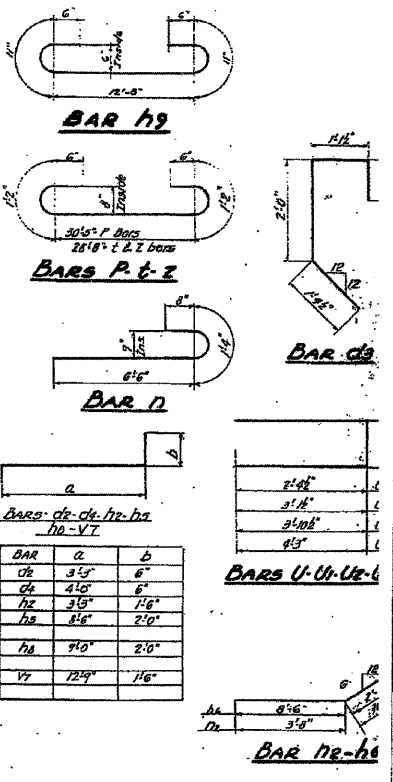


SECTION C-C

BAR S-SI

BILL OF MATERIAL EAST ABUTMENT

BAR	No.	SIZE	LENGTH	SHAPE
cl	28	3"	7'-6"	
cl	8	2"	5'-3"	
cl	31	3"	3'-9"	
cl	24	3"	3'-9"	
cl	4	3"	4'-6"	
h	10	3"	23'-3"	
h1	2	3"	23'-6"	
h2	16	3"	21'-9"	
h3	6	3"	10'-0"	
h4	8	3"	8'-6"	
h5	10	3"	10'-8"	
h6	14	3"	11'-0"	
h7	8	3"	9'-0"	
h8	10	3"	11'-0"	
h9	12	2"	15'-6"	
h10	8	2"	2'-6"	
n	15	1/2"	8'-6"	
n1	36	3"	4'-0"	
n2	12	3"	4'-6"	
p	12	1"	33'-9"	
s	28	2"	11'-0"	
e	9	1"	33'-0"	
u1	16	1/2"	4'-9"	
u2	6	2"	6'-6"	
u3	12	2"	8'-0"	
u4	12	2"	9'-0"	
u5	6	2"	10'-0"	
v	15	1"	10'-9"	
v1	30	3"	11'-0"	
v2	12	3"	11'-6"	
v3	8	2"	8'-3"	
v4	8	2"	9'-9"	
v5	8	2"	11'-0"	
v6	8	2"	12'-6"	
v7	6	3"	16'-3"	
v8	6	3"	4'-0"	
w	20	3"	8'-0"	
z	9	1"	33'-0"	



Class-2 Concrete	Cu. Yds.	59.3
Handrail Concrete	Cu. Yds.	2.7
Reinforcement Bars	Lbs.	7910
Untreated Piling (Est. 10 ft. 25')	Lin. Ft.	800
Timber Post Piles - Untreated Each		1
Treated Piling (Est. 10 ft. 35')	Lin. Ft.	70

ALFRED BENESCH & ASSOCIATES
CONSULTING ENGINEERS
30 EAST ADAMS ST. CHICAGO 3, ILL.

EAST ABUTMENT
KISHWAUKEE RIVER BRIDGE
PROJECT 5-64(3)
FA. 5. RTE. 88 S.A. RTE. 3
SECTION 75-B
WINNEBAGO COUNTY
STATION 88157

EXISTING DRAWING
STRUCTURE NUMBER 101-3100

FOR REFERENCE ONLY

PROFESSIONAL DESIGN FIRM LICENSE #184-001084

© Copyright Hanson Professional Services Inc. 2010



JOB NO. 03R1807
DATE 10/26/10

SHEET NO. 43
47 SHEETS

F.A.U. R.T.E. 5103

SECTION 03-00337-00-BR

COUNTY Winnebago

TOTAL SHEETS 66
SHEET NO. 58
CONTRACT NO. 85523

ILLINOIS FED. AID PROJECT

LAYOUT: JRP/SJM 09/23/10
DRAWN: JRP 10/27/10
REVIEWED: JRP/SJM 10/26/10