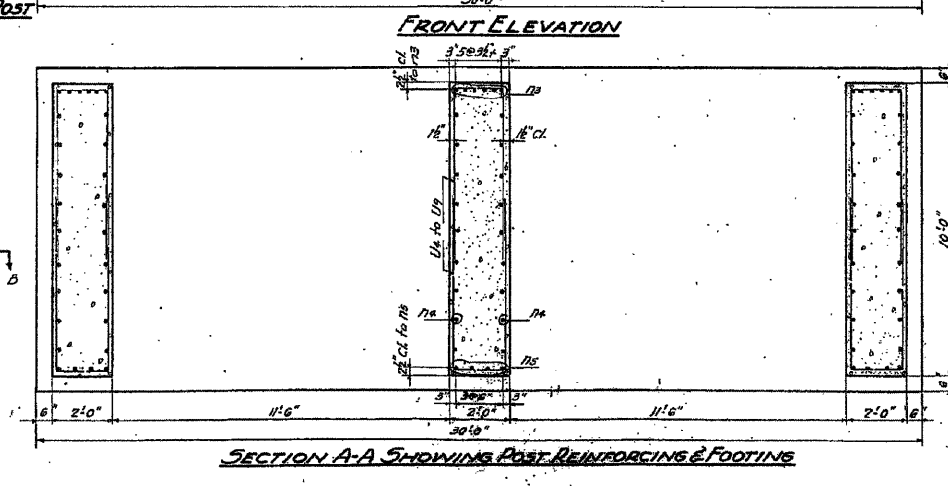
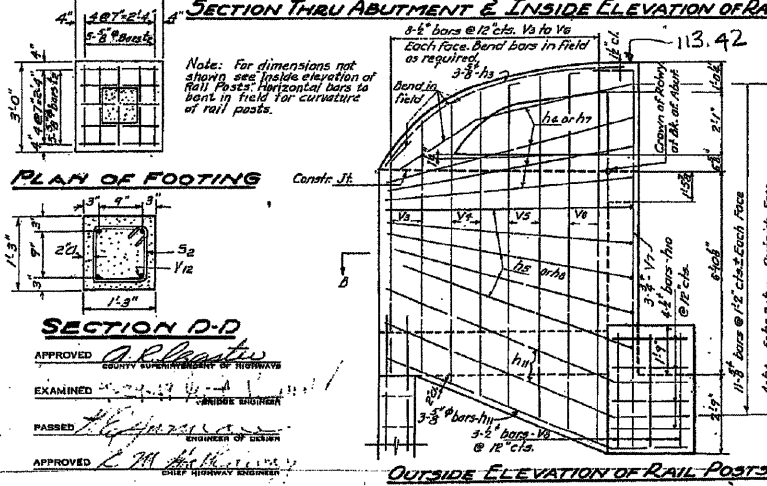
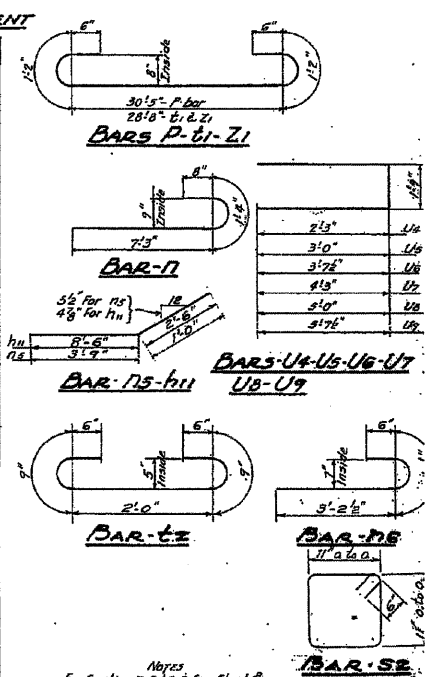


BILL OF MATERIAL WEST ABUTMENT

BAR	NO.	SIZE	LENGTH	SHAPE
U1	20	3"	7'6"	
U2	8	3"	5'3"	
U3	31	3"	3'7"	
U4	24	3"	5'9"	
U5	4	3"	4'6"	
U6	10	3"	29'5"	
U7	2	3"	23'6"	
U8	16	3"	4'9"	
U9	6	3"	10'0"	
U10	8	3"	8'6"	
U11	10	3"	10'6"	
U12	8	3"	9'0"	
U13	10	3"	11'0"	
U14	12	3"	15'6"	
U15	8	3"	2'6"	
U16	14	3"	11'0"	
U17	18	3"	9'5"	
U18	54	3"	2'5"	
U19	12	3"	4'9"	
U20	8	3"	4'9"	
U21	12	1"	33'9"	
U22	20	2"	11'0"	
U23	12	1"	33'0"	
U24	20	2"	4'6"	
U25	6	2"	6'5"	
U26	12	2"	7'5"	
U27	12	2"	7'6"	
U28	12	2"	10'5"	
U29	12	2"	11'9"	
U30	12	2"	13'0"	
U31	18	1"	4'9"	
U32	8	2"	8'3"	
U33	8	2"	9'9"	
U34	8	2"	11'5"	
U35	8	2"	18'6"	
U36	6	2"	14'5"	
U37	18	1"	18'9"	
U38	36	3"	18'0"	
U39	12	3"	18'6"	
U40	20	3"	21'0"	
U41	20	3"	10'6"	
U42	12	1"	33'0"	
U43	12	1"	4'9"	
U44	38	1"	4'9"	



ALFRED BENESCH & ASSOCIATES
CONSULTING ENGINEERS
33 EAST ADAMS ST.
CHICAGO 3, ILL.

WEST ABUTMENT
KISHWAUKEE RIVER BRIDGE
PROJECT 5-64(3)
F.A.S. RTE. 88 S.A. RTE. 3
SECTION 75-B
WINNEBAGO COUNTY
STATION 88+57

FOR REFERENCE ONLY

EXISTING DRAWING
STRUCTURE NUMBER 101-3100

PROFESSIONAL DESIGN FIRM LICENSE #184-001084

© Copyright Hanson Professional Services Inc. 2010



JOB NO.
03R1807
SHEET NO. 44
DATE
10/26/10

F.A.U.
RTE.
5103

SECTION
03-00337-00-BR

COUNTY
Winnebago
TOTAL SHEETS
66
SHEET NO.
59

CONTRACT NO. 85523

ILLINOIS FED. AID PROJECT

LAYOUT: MKP/SKM 08/23/10
DRAWN: WJA 10/25/10
REVIEWED: MKP/SKM 10/26/10