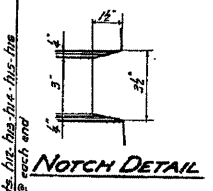
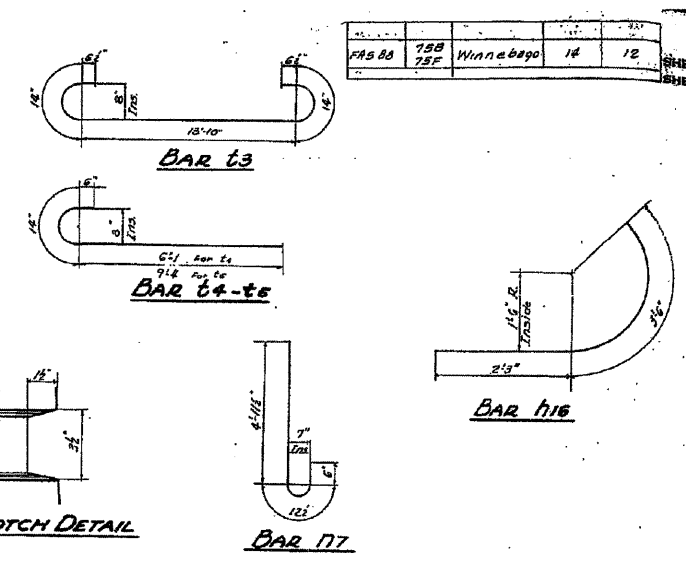
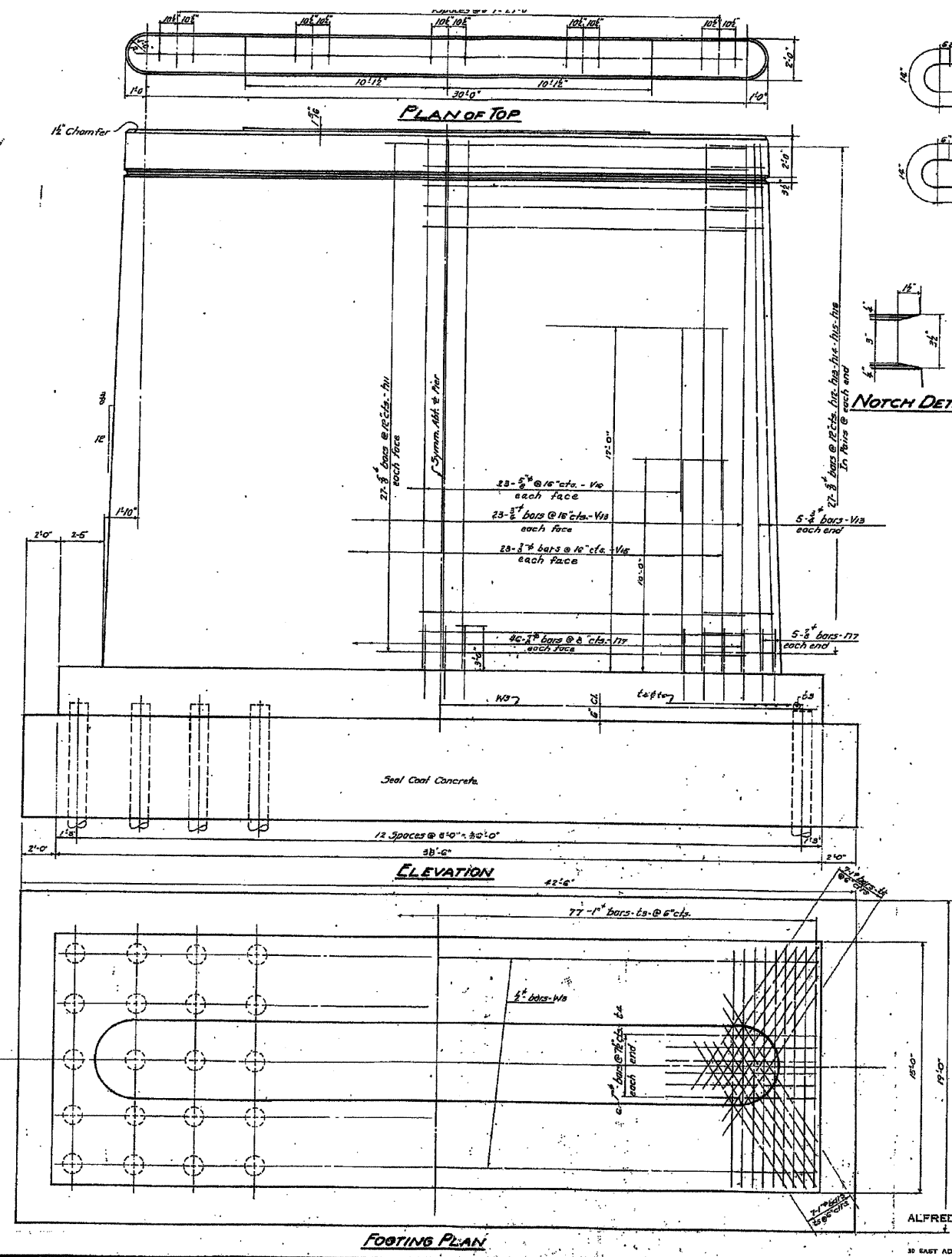


APPROVED *[Signature]*
 COUNTY SUPERVISOR OF HIGHWAYS
 EXAMINED *[Signature]*
 PASSED *[Signature]*
 APPROVED *[Signature]*
 CHIEF HIGHWAY ENGINEER

Revised 10/21/49 - Cofferdam Pile Item - J.S.H.



BILL OF MATERIAL - PIER 2

BAR	NO.	SIZE	LENGTH	BAR	NO.	SIZE	LENGTH
Va	60	5/8"	26'-0"	W	24	5/8"	26'-0"
Vb	40	5/8"	10'-0"	W	24	5/8"	10'-0"
Vc	40	5/8"	9'-0"	W	24	5/8"	9'-0"
La	77	1"	16'-9"	W	20	5/8"	16'-9"
Lb	12	1"	7'-9"	W	20	5/8"	7'-9"
Lc	20	1"	11'-0"	W	20	5/8"	11'-0"
W	4	1/2"	22'-9"	W	20	5/8"	22'-9"
W	102	5/8"	6'-6"	W	20	5/8"	6'-6"

Class "A" Concrete Cu. Yds. 140.5
 Reinforcement Bars Lbs. 11,980
 Steel Coat Concrete Cu. Yds. 112.2
 Cofferdam for Pier 2 Each 1
 Cofferdam Excavation Cu. Yds. 217
 Untreated Piles (Est. Lgth. 25 Ft) Lin. Ft. 1600
 Timber Test Piles - Untreated Each 2

Note: for details of bars - see to figs - see sheet 19

PIER 2
KISHWAUKEE RIVER BRIDGE
PROJECT 5-64(3)
P.A.S. RTE. 88 S.A. RTE. 3
SECTION 75-B
WINNEBAGO COUNTY
STATION 88+57

ALFRED BENESCH & ASSOCIATES
 CONSULTING ENGINEERS
 30 EAST ADAMS ST. CHICAGO 3, ILL.

FOR REFERENCE ONLY

EXISTING DRAWING
 STRUCTURE NUMBER 101-3100

PROFESSIONAL DESIGN FIRM LICENSE #184-001084

© Copyright Hanson Professional Services Inc. 2010 Hanson Professional Services Inc.	JOB NO. 03R1807	SHEET NO. 46	F.A.U. RTE. 5103	SECTION 03-00337-00-BR	COUNTY Winnebago	TOTAL SHEETS 66	SHEET NO. 61
	DATE 10/26/10	47 SHEETS	CONTRACT NO. 85523		ILLINOIS FED. AID PROJECT		

LAYOUT JRP/SWK/08/23/10
 DRAWN MCM 10/25/10
 REVIEWED JRP/SWK 10/26/10