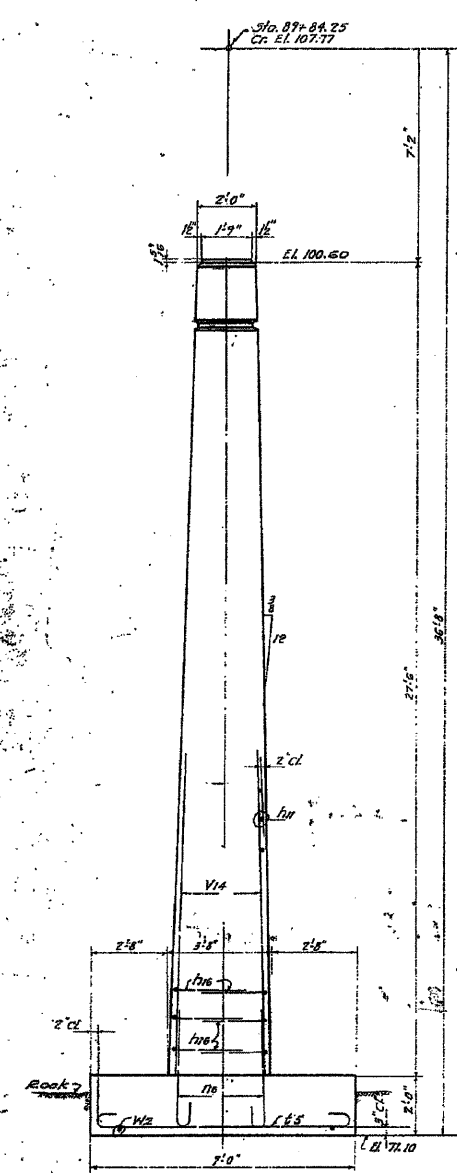
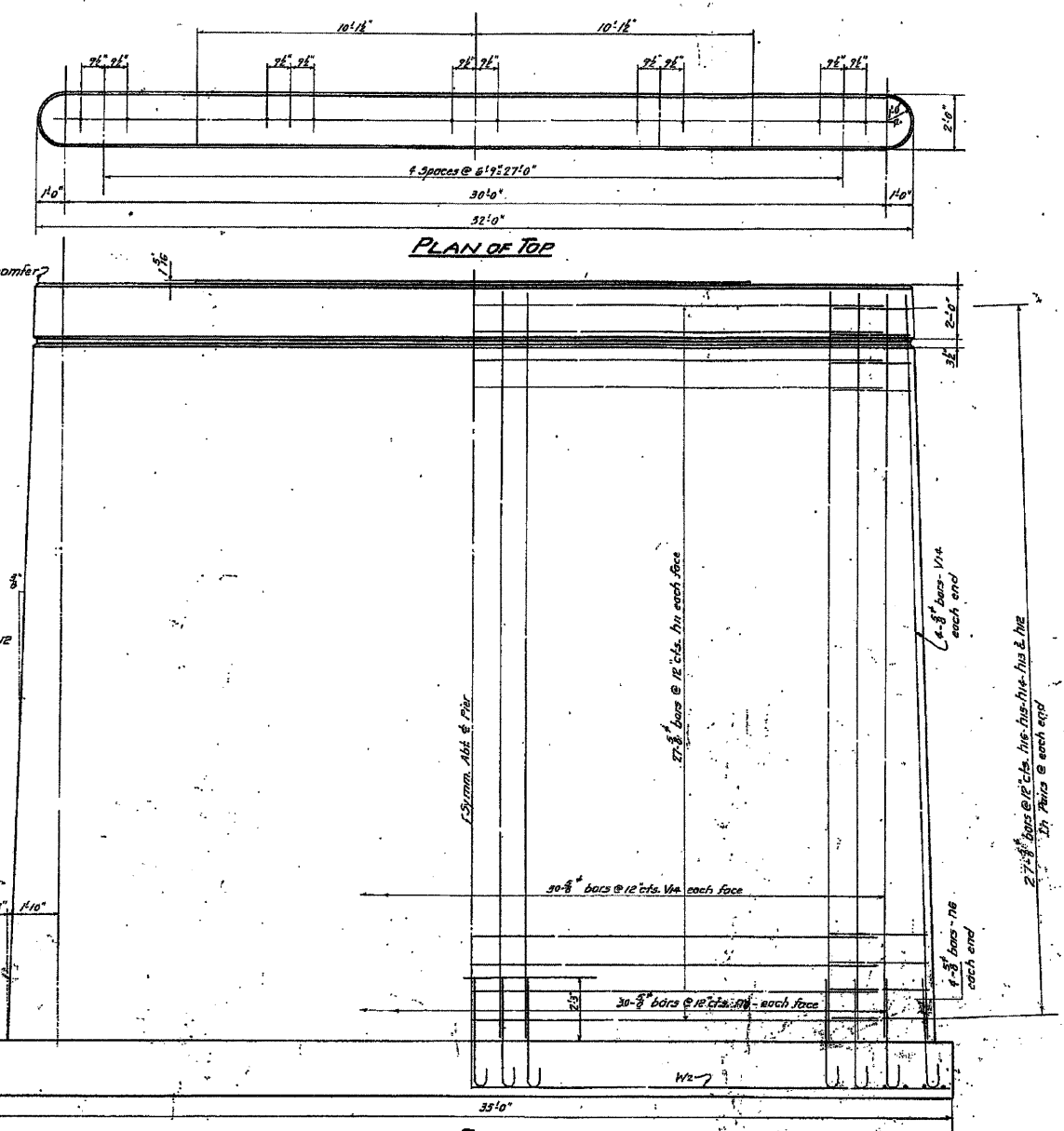


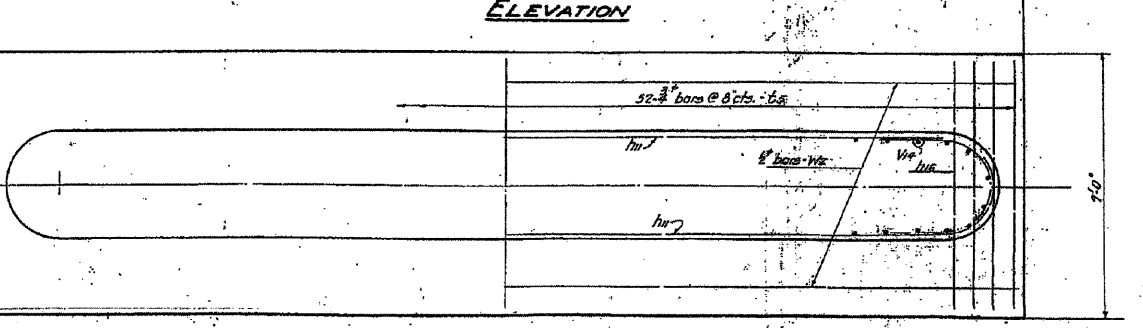
DATE	BY	DESCRIPTION
10/26/10	AK	Winnipeg



END VIEW



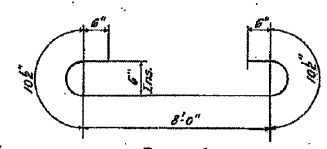
PLAN OF TOP



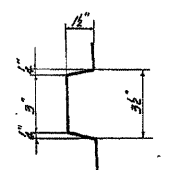
ELEVATION



FOOTING PLAN



BAR 6S



NOTCH DETAIL

BILL OF MATERIALS

BAR	NO.	CLASS	QUANTITY	REMARKS
W#	6S			
W#	6S			
6S	52			
W#	4			

Class-A Concrete
 Reinforcement Bars
 Coffers for Pier
 Coffers for Excavation
 Rock Excavation for Foundation

For details of bars in this sheet
 For details of bars in this sheet

APPROVED *AK*
 COUNTY ENGINEER OF HIGHWAYS
 EXAMINED *AK*
 COUNTY ENGINEER OF HIGHWAYS
 DESIGNED *AK*
 COUNTY ENGINEER OF HIGHWAYS
 APPROVED *AK*
 COUNTY ENGINEER OF HIGHWAYS

ALFRED BENESCH & ASSOCIATES
 CONSULTING ENGINEERS
 38 EAST ADAMS ST. CHICAGO 4, ILL.

PIER 3
 KASHIWAUKEE RIVER BRIDGE
 PROJECT 5-64(1)
 I.A. 5-RTE 88 - I.A. RTE 8
 SECTION 17-D
 WINNEBAGO COUNTY
 STATION 88+57

EXISTING DRAWING
 STRUCTURE NUMBER 101-3100

FOR REFERENCE ONLY

PROFESSIONAL DESIGN FIRM LICENSE #184-001084

© Copyright Hanson Professional Services Inc. 2010



JOB NO. 03R1807
 SHEET NO. 47
 DATE 10/26/10

F.A.U. RTE. 5103

SECTION 03-00337-00-BR

COUNTY Winnebago
 TOTAL SHEETS 66
 SHEET NO. 62
 CONTRACT NO. 85523
 ILLINOIS FED. AID PROJECT

LAYOUT: AK/SK 08/23/10
 DRAWN: AK/SK 10/25/10
 REVIEWED: AK/SK 10/26/10