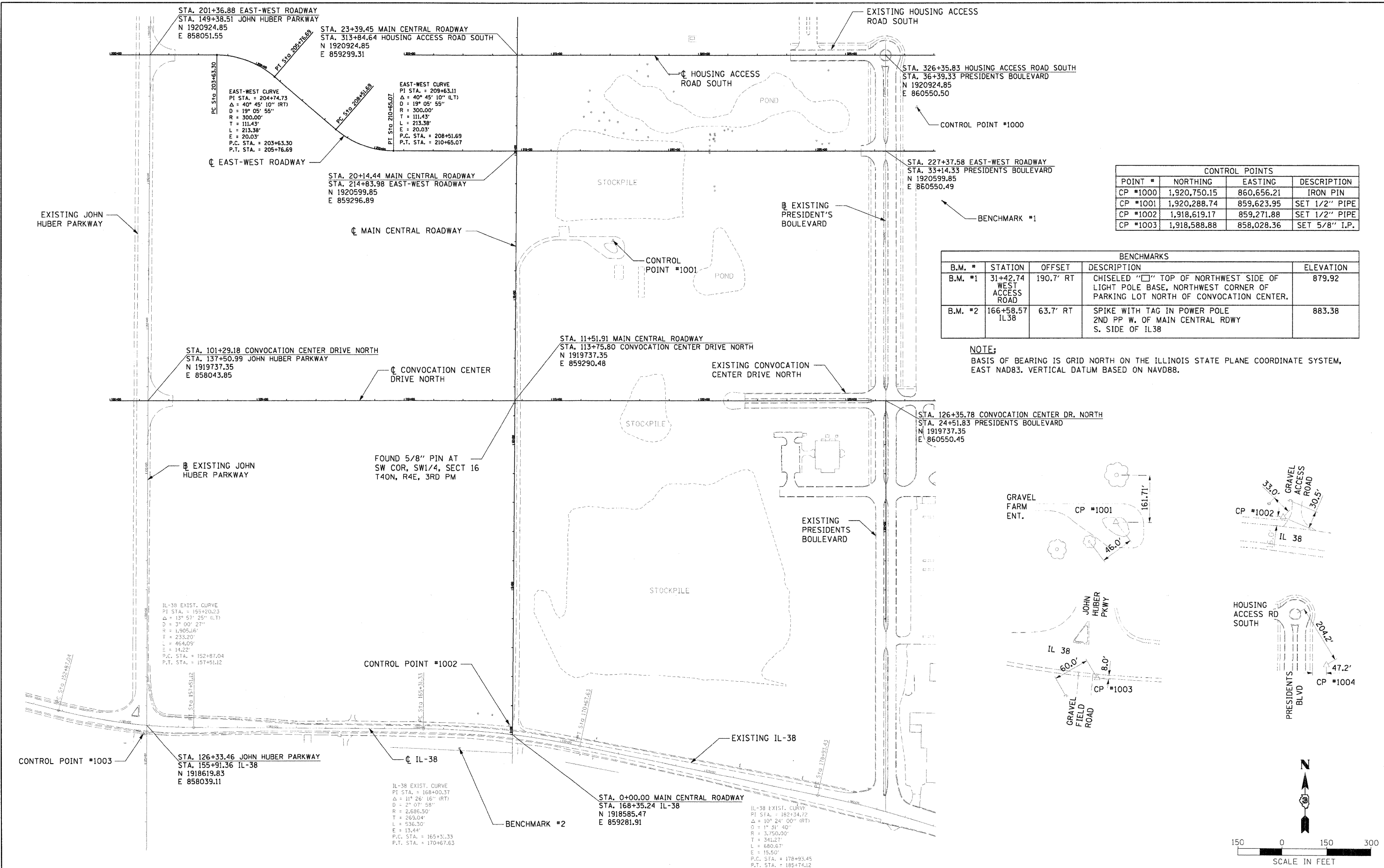




Hanson Professional Services Inc.

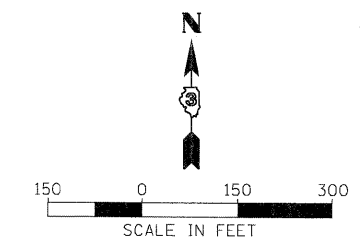
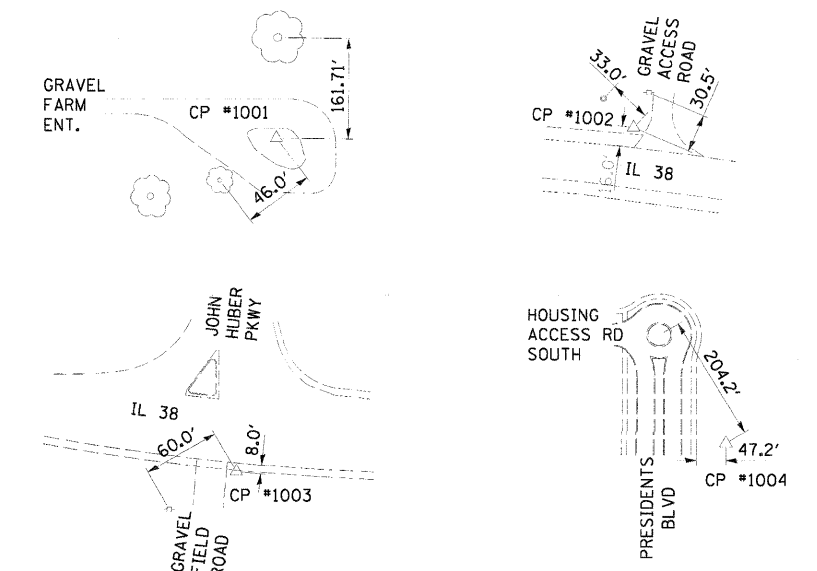
LAYOUT: MW 08/31/10, HUSS00041  
 DRAWN: MW 11/04/10, HUSS00040  
 REVIEWED: SA 11/24/10, HUSS00040  
 C:\203-AL1.dgn



CONTROL POINTS			
POINT #	NORTHING	EASTING	DESCRIPTION
CP #1000	1,920,750.15	860,656.21	IRON PIN
CP #1001	1,920,288.74	859,623.95	SET 1/2" PIPE
CP #1002	1,918,619.17	859,271.88	SET 1/2" PIPE
CP #1003	1,918,588.88	858,028.36	SET 5/8" I.P.

BENCHMARKS				
B.M. #	STATION	OFFSET	DESCRIPTION	ELEVATION
B.M. #1	31+42.74 WEST ACCESS ROAD	190.7' RT	CHISELED "C" TOP OF NORTHWEST SIDE OF LIGHT POLE BASE, NORTHWEST CORNER OF PARKING LOT NORTH OF CONVOCATION CENTER.	879.92
B.M. #2	166+58.57 IL38	63.7' RT	SPIKE WITH TAG IN POWER POLE 2ND PP W. OF MAIN CENTRAL RDWY S. SIDE OF IL38	883.38

**NOTE:**  
 BASIS OF BEARING IS GRID NORTH ON THE ILLINOIS STATE PLANE COORDINATE SYSTEM, EAST NAD83. VERTICAL DATUM BASED ON NAVD88.



FILE NAME = C:\203-AL1.dgn	USER NAME = MWH	DESIGNED - SLN	REVISED -	<b>STATE OF ILLINOIS DEPARTMENT OF TRANSPORTATION</b>	<b>NORTHERN ILLINOIS UNIVERSITY FAR WEST CAMPUS EXPANSION ALIGNMENTS AND BENCHMARKS</b>	F.A.P. RTE. 567	SECTION 06-00002-00-PV	COUNTY DEKALB	TOTAL SHEETS 148	SHEET NO. 10
PLOT SCALE = AS SHOWN	CHECKED - SLN	REVISED -	SCALE: AS SHOWN			SHEET NO. OF SHEETS STA. TO STA.	FED. ROAD DIST. NO. ILLINOIS FED. AID PROJECT	CONTRACT NO. 87476		
PLOT DATE = 11/04/10	DATE = 11/04/10	REVISED -								