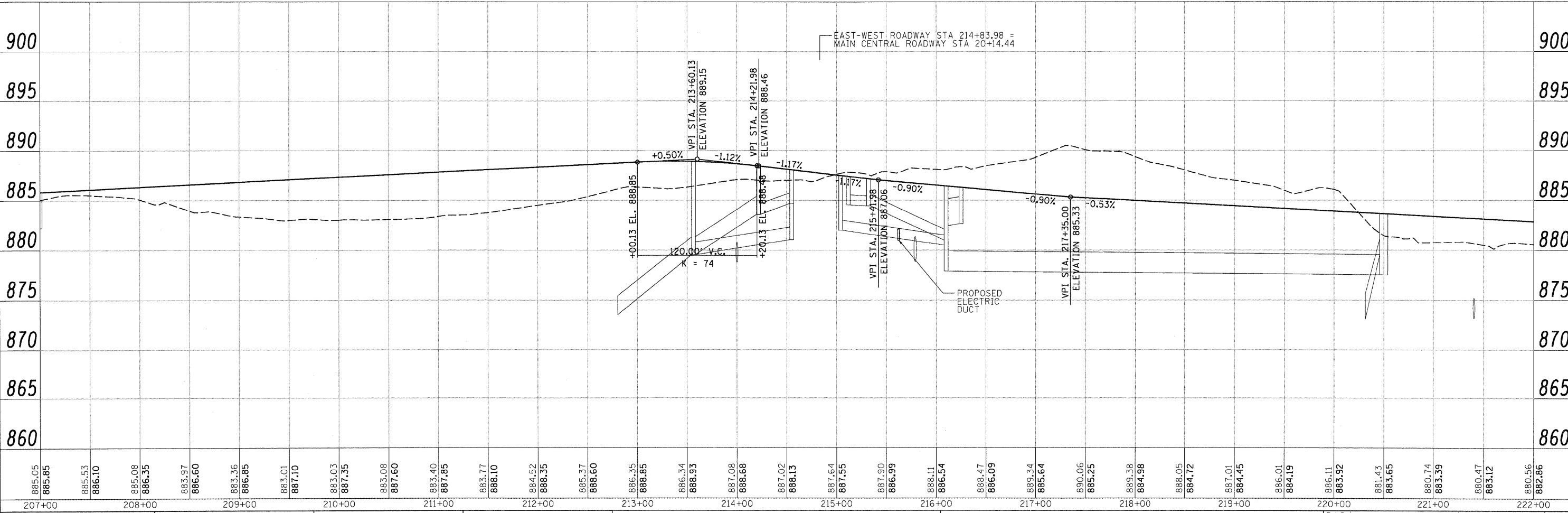
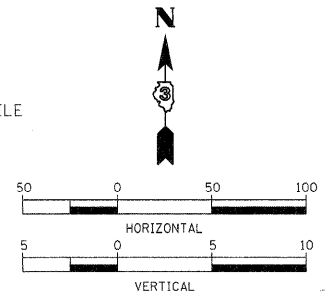
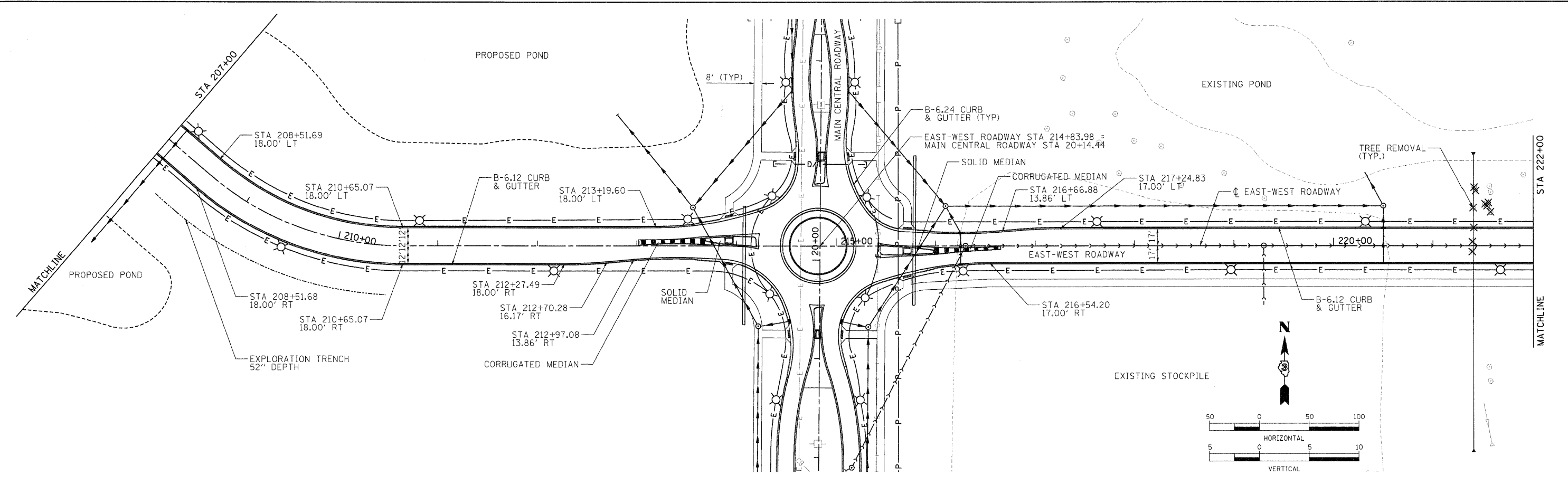




Hanson Professional Services Inc.



LAYOUT MWH 08/25/09 Huss00411
 DRAWN MWH 10/20/10 10/20/2000
 REVIEWED DPA 10/20/10 10/20/2000
 C-112-EW-PP.dgn

885.05	885.85	885.53	886.10	885.08	886.35	883.37	886.60	883.36	886.85	883.01	887.10	883.03	887.35	883.08	887.60	883.40	887.85	883.77	888.10	884.52	888.35	885.37	888.60	886.35	888.85	886.34	888.93	887.08	888.68	887.02	888.13	887.64	887.55	887.90	886.99	888.11	886.54	888.47	886.09	889.34	885.64	890.06	885.25	889.38	884.98	888.05	884.72	887.01	884.45	886.01	884.19	886.11	883.92	881.43	883.65	880.74	883.39	880.47	883.12	880.56	882.96
207+00		208+00		209+00		210+00		211+00		212+00		213+00		214+00		215+00		216+00		217+00		218+00		219+00		220+00		221+00		222+00																															

FILE NAME =	USER NAME = Huss00411
DESIGNED - DPA	REVISOR -
DRAWN - MWH	REVISOR -
CHECKED - DPA	REVISOR -
DATE - 11/04/10	REVISOR -

STATE OF ILLINOIS
 DEPARTMENT OF TRANSPORTATION

NORTHERN ILLINOIS UNIVERSITY
 FAR WEST CAMPUS EXPANSION
 EAST-WEST ROADWAY PLAN AND PROFILE
 SCALE: 1" = 50'

F.A.P. RTE. 567	SECTION 06-00002-00-PV	COUNTY DEKALB	TOTAL SHEETS 148	SHEET NO. 20
CONTRACT NO. 87416			ILLINOIS FED. AID PROJECT	