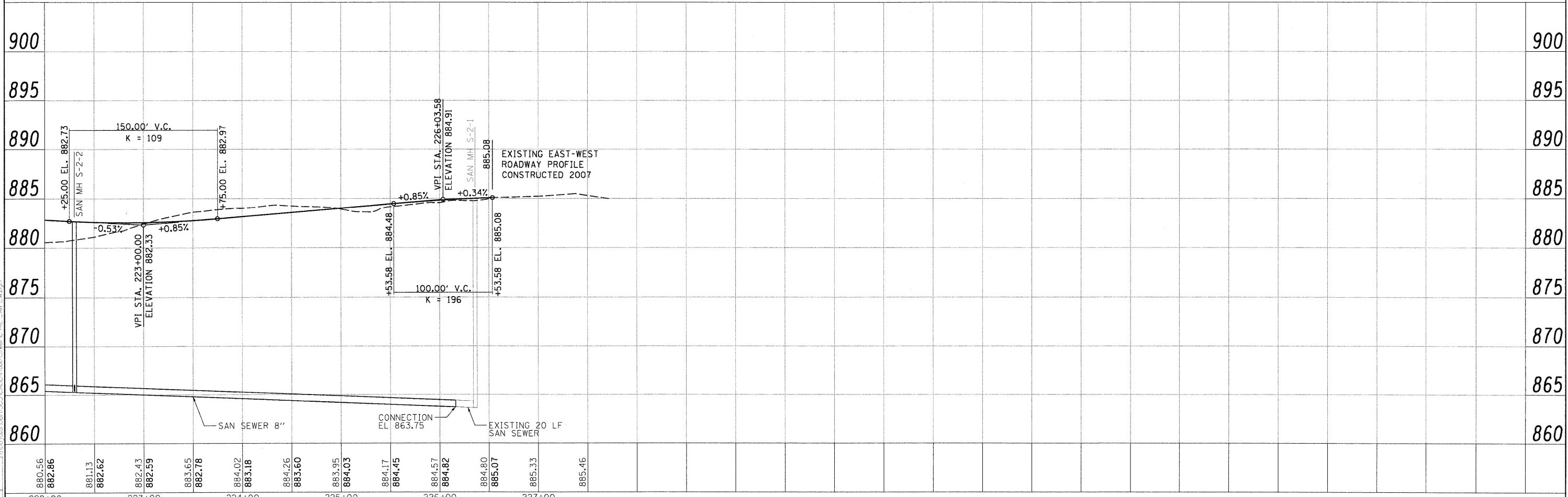
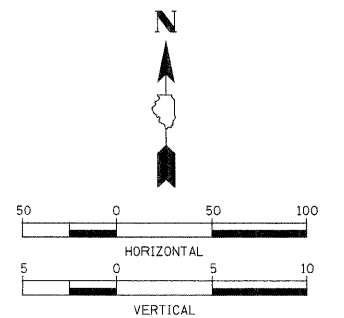
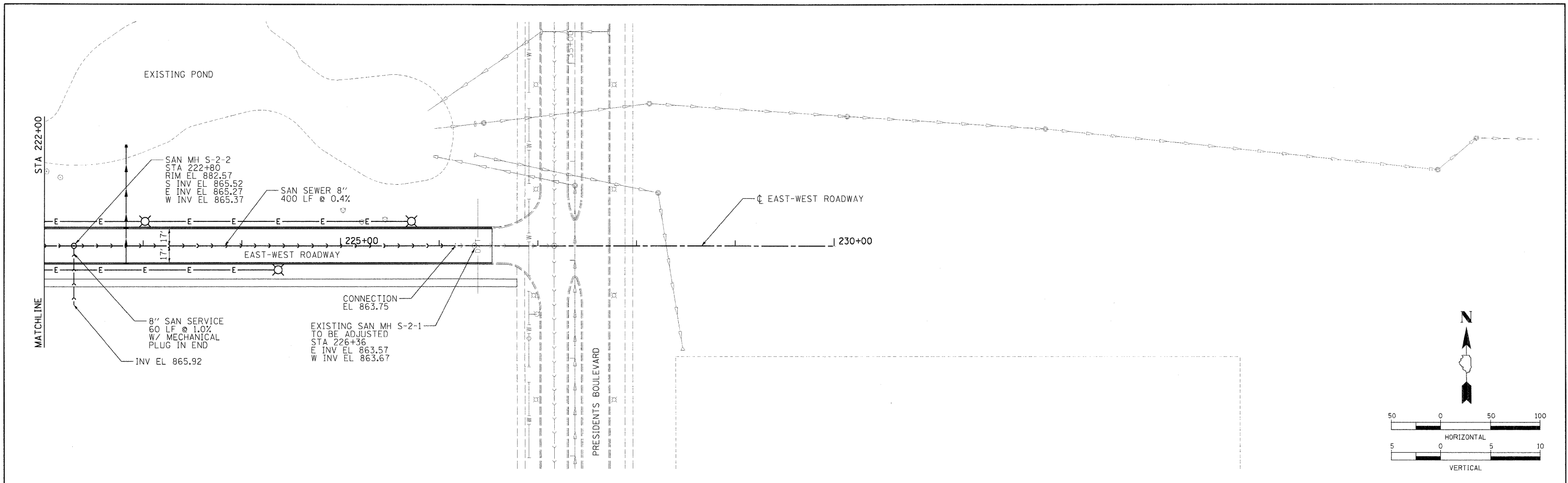




Hanson Professional Services Inc.



LAYOUT: MWH 08/25/09 Huser0041
 DRAWN: MWH 09/09/10 Huser0041
 REVISED: CRC

FILE NAME = D:\142-SAN-TW.dgn	USER NAME = Huser0041	DESIGNED - CRC	REVISED -
		DRAWN - MWH	REVISED -
		CHECKED - CRC	REVISED -
		DATE - 11/04/10	REVISED -

**STATE OF ILLINOIS
 DEPARTMENT OF TRANSPORTATION**

**NORTHERN ILLINOIS UNIVERSITY
 WEST CAMPUS EXPANSION
 EAST-WEST ROADWAY SANITARY SEWER**

SCALE: 1" = 50' SHEET NO. OF SHEETS STA. 222+00 TO STA. 227+00

F.A.P. RTE. 567	SECTION 06-00002-00-PV	COUNTY DEKALB	TOTAL SHEETS 148	SHEET NO. 30
CONTRACT NO. 87476				
ILLINOIS FED. AID PROJECT				