

STATE OF ILLINOIS
DEPARTMENT OF TRANSPORTATION
PLANS FOR
PROPOSED LOCAL AGENCY IMPROVEMENT
FEDERAL URBAN PROJECT

ROUTE NO.	SECTION	COUNTY	TOTAL SHEETS	SHEET NO.
F.A.U. 6739	*	TAZEWELL	36	1

* 05-00103-00-FP
CONTRACT NO. 89483

INDEX OF SHEETS

SHEET NO.	DESCRIPTION
1	COVER SHEET
2	SUMMARY OF QUANTITIES / GENERAL NOTES
3	TYPICAL SECTIONS
4	STATUS OF UTILITIES
5	QUANTITIES NOT OTHERWISE SHOWN
6	STORM SEWER QUANTITIES
7	BENCHMARKS AND CONTROL POINTS
8	CONSTRUCTION PHASING AND TRAFFIC CONTROL
9	RIGHT-OF-WAY PLAN
10-12	EXISTING AND REMOVAL ITEMS
13-17	PLAN AND PROFILE SHEETS
18-19	INTERSECTION DETAILS
20-22	EROSION CONTROL PLAN
23-25	PAVEMENT MARKINGS
26	CONSTRUCTION DETAILS
27-36	CROSS SECTIONS

PLAN 1" = 20'

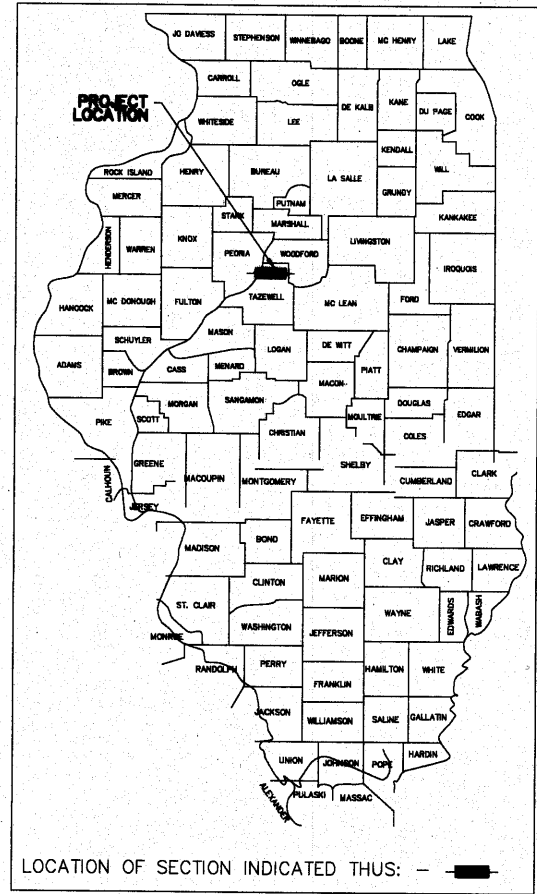
PROFILE HOR. 1" = 20'

SCALE PROFILE VERT. 1" = 5'

CROSS SECTIONS HOR. 1" = 10'

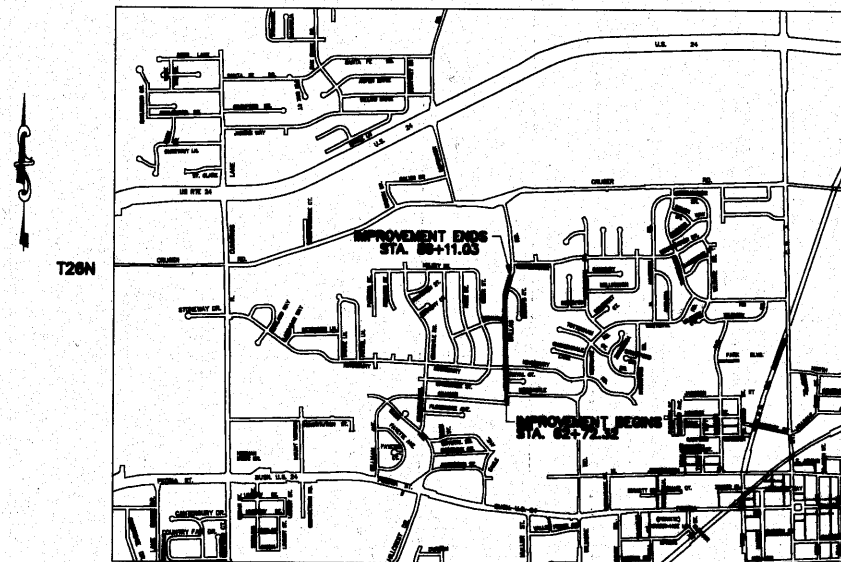
CROSS SECTIONS VERT. 1" = 5'

F.A.U. ROUTE 6739 TAZEWELL COUNTY
SECTION 05-00103-00-FP
PROJECT M-5093 (129)
JOB NO. C-94-047-08
CITY OF WASHINGTON, ILLINOIS



LIST OF CONSTRUCTION STANDARDS

280001-05	TEMPORARY EROSION CONTROL SYSTEMS
424001-05	CURB RAMPS FOR SIDEWALKS
542301-03	PRECAST REINFORCED CONCRETE FLARED END SECTION
602301-03	INLET - TYPE A
602306-03	INLET - TYPE B
602401-03	MANHOLE TYPE A
602406-04	MANHOLE, TYPE A, 6' DIAMETER
602601-02	PRECAST REINFORCED CONCRETE FLAT SLAB TOP
602701-02	MANHOLE STEPS
604001-03	FRAME AND LIDS TYPE 1
604036-02	GRATE TYPE B
606001-04	CONCRETE CURB TYPE B AND COMBINATION CONCRETE CURB & GUTTER
701501-06	URBAN LANE CLOSURE, 2L, 2W, UNDIVIDED
701901-01	TRAFFIC CONTROL DEVICES
720001-01	SIGN PANEL MOUNTING DETAILS
720006-02	SIGN PANEL ERECTION DETAILS
720011-01	METAL POSTS FOR SIGNS, MARKERS & DELINEATORS
729001-01	APPLICATIONS OF TYPES A & B METAL POSTS (FOR SIGNS & MARKERS)
780001-02	TYPICAL PAVEMENT MARKINGS
BLR 21-8	TYPICAL APPLICATION OF TRAFFIC CONTROL DEVICES FOR CONSTRUCTION ON RURAL LOCAL HIGHWAYS
BLR 22-6	TYPICAL APPLICATION OF TRAFFIC CONTROL DEVICES FOR CONSTRUCTION ON RURAL LOCAL HIGHWAYS



PROPOSED IMPROVEMENT CONSISTS OF CONSTRUCTING A 9" AGGREGATE BASE, CURB & GUTTER, STORM SEWERS, 4.5 INCHES TOTAL HMA BINDER AND SURFACE COURSES, 8 FOOT WIDE SIDEWALK AND PAVEMENT MARKINGS. THE IMPROVEMENT SHALL BE CONSTRUCTED WITH THE WORK AREA BEING CLOSED TO TRAFFIC.

QC/QA HMA PROJECT

N.P.D.E.S. PERMIT
REQUIRED

CITY OFFICIALS

MAYOR: GARY W. MANIER
CLERK: PATRICIA S. BROWN
TREASURER: ELLEN L. DINGLEDINE
ADMINISTRATOR: ROBERT A. MORRIS

ENGINEER: KENNETH B. NEWMAN
ALDERMEN: ROBERT A. BRUCKS
JAMES A. NEWMAN
DONALD R. BRUBAKER
TODD A. CLANIN
ALAN L. HOWERTER
DAVID DINGLEDINE
JAMES L. GEE
RICHARD E. SCHNEIDER

PASSED 10/27 2010
DEPUTY DIRECTOR OF HIGHWAYS,
REGION THREE ENGINEER
STATE OF ILLINOIS
DEPARTMENT OF TRANSPORTATION

PLANS PREPARED BY
AUSTIN ENGINEERING CO., INC.
PEORIA, ILLINOIS

BY: *Devin L. Birch*
DEVIN L. BIRCH, P.E.
LIC. EXP. DATE 11/30/11



CITY OF WASHINGTON, ILLINOIS
APPROVED *Kenneth B. Newman*
CITY ENGINEER
DATE 10/18/10

NET LENGTH OF PROJECT
DALLAS ROAD : 2,338.71 LIN. FT. = 0.443 MILES

FUNCTIONAL CLASSIFICATION: COLLECTOR (TWS-2)
ADT: 1,150 (2006); 4,100 (2026)
DESIGN SPEED: 30 MPH
POSTED SPEED: 30 MPH
VEHICLE MIX: PV= 98.5% SU= 1% MU= <0.5%

COMMITMENTS: 1300 MITCHELL STREET
NO DIRT OR OTHER MATERIALS ARE TO BE STORED
OR STOCKPILED NEAR THE EVERGREEN TREES
LOCATED ALONG THE ROW LINE.

CONTRACT NO. 89483

J.U.L.I.E. 1-800-892-0123
NOTE: VISIBLE UTILITY STRUCTURES WERE LOCATED BY FIELD SURVEY AS SHOWN. UNDERGROUND UTILITY LOCATIONS WERE OBTAINED FROM AVAILABLE RECORD DRAWINGS AND ARE APPROXIMATE AND MAY NOT BE COMPLETE. CONTACT J.U.L.I.E. BEFORE EXCAVATING.

COVER SHEET DALLAS ROAD - PHASE ONE	AUSTIN ENGINEERING CO., INC. CIVIL ENGINEERS PEORIA ILLINOIS LICENSE No. 184-001149
FOR: CITY OF WASHINGTON DATE 08/13/10	REVISIONS REVISION 10/18/10 REVISION REVISION SHEET NO. 1 OF 36