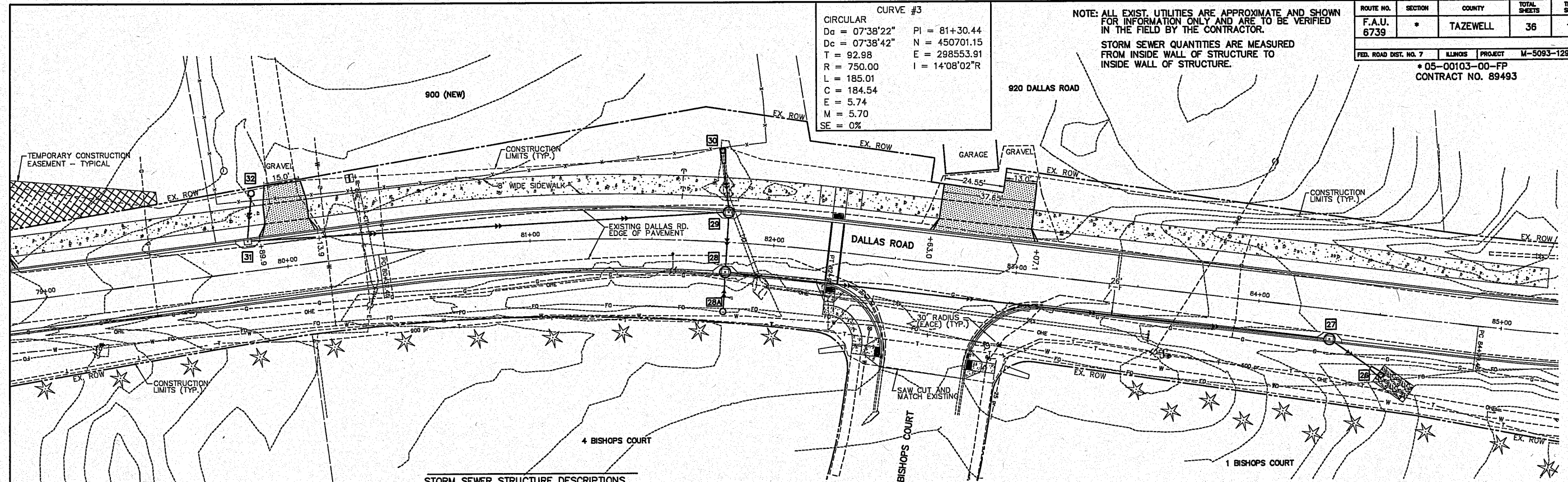


ROUTE NO.	SECTION	COUNTY	TOTAL SHEETS	THIS SHEET
F.A.U. 6739	*	TAZEWELL	36	16
FED. ROAD DIST. NO. 7		ILLINOIS	PROJECT	M-5093-129
		*05-00103-00-FP CONTRACT NO. 89493		

CURVE #3
 CIRCULAR
 Da = 07'38"22" PI = 81+30.44
 Dc = 07'38"42" N = 450701.15
 T = 92.98 E = 298553.91
 L = 185.01
 C = 184.54
 E = 5.74
 M = 5.70
 SE = 0%

NOTE: ALL EXIST. UTILITIES ARE APPROXIMATE AND SHOWN FOR INFORMATION ONLY AND ARE TO BE VERIFIED IN THE FIELD BY THE CONTRACTOR.
 STORM SEWER QUANTITIES ARE MEASURED FROM INSIDE WALL OF STRUCTURE TO INSIDE WALL OF STRUCTURE.



- STORM SEWER STRUCTURE DESCRIPTIONS**
- 26 PRECAST REINFORCED CONCRETE FLARED END SECTION, 18", 25.00' RT. STA. 84+53.76, INV. 757.00
 - 27 INLET MANHOLE, TY. A, 4' DIA., TY. G-1 FRAME & GRATE 12.33' RT. STA. 84+30.48, T/C 761.62, E/P 761.18, INV. 757.24 (18"N), INV. 757.34 (18"S)
 - 28 INLET MANHOLE, TY. A, 4' DIA., TY. G-1 FRAME & GRATE 12.33' RT. STA. 81+80.76, T/C 765.16, E/P 764.72, INV. 759.55 (18"N), INV. 759.65 (12"E), INV. 760.70 (18"W)
 - 28A INLETS, TYPE A, TYPE 8 GRATE, 28.58' RT. STA. 81+80.76, T/CONC. 761.80, INV. 759.78 (12"W)
 - 29 INLET MANHOLE, TY. A, 4' DIA., TY. G-1 FRAME & GRATE 12.33' LT. STA. 81+80.76, T/C 765.16, E/P 764.72, INV. 760.91 (18"E), INV. 761.16 (15"S), INV. 761.44 (15"W)
 - 30 PRECAST REINFORCED CONCRETE FLARED END SECTION, 15" 38.33' LT. STA. 81+76.88, INV. 763.84
 - 31 INLETS, TYPE G-1, 12.33' LT. STA. 79+84.96, T/C 768.10, E/P 767.66, INV. 764.07 (15"N), INV. 764.17 (12"W)
 - 32 INLETS, TYPE A, TYPE 8 GRATE, 31.80' LT. STA. 79+88.83, T/CONC. 766.45, INV. 764.35 (12"E)
- STORM SEWER PIPE SCHEDULE**
- 31 - 32 STORM SEWERS, CLASS A, TYPE 1, 12"-18 FT. @ 1.00%, T.B.(ST.S.) = 3 C.Y.
 - 29 - 31 STORM SEWERS, CLASS A, TYPE 1, 15"-194 FT. @ 1.50%, T.B.(ST.S.) = 35 C.Y.
 - 29 - 30 STORM SEWERS, CLASS A, TYPE 1, 15"-18 FT. PLUS END SECTION @ 10.00%, T.B. = 4 C.Y.
 - 28 - 29 STORM SEWERS, CLASS A, TYPE 1, 18"-21 FT. @ 1.00%, T.B.(ST.S.) = 6 C.Y.
 - 28 - 28A STORM SEWERS, CLASS A, TYPE 1, 12"-13 FT. @ 1.00%, T.B.(ST.S.) = 2 C.Y.
 - 27 - 28 STORM SEWERS, CLASS A, TYPE 2, 18"-245 FT. @ 0.90%, T.B.(ST.S.) = 54 C.Y.
 - 28 - 27 STORM SEWERS, CLASS A, TYPE 1, 18"-18 FT. PLUS END SECTION @ 1.00%, T.B. = 5 C.Y.

SCALES:
 1" = 20' HOR
 1" = 5' VER

