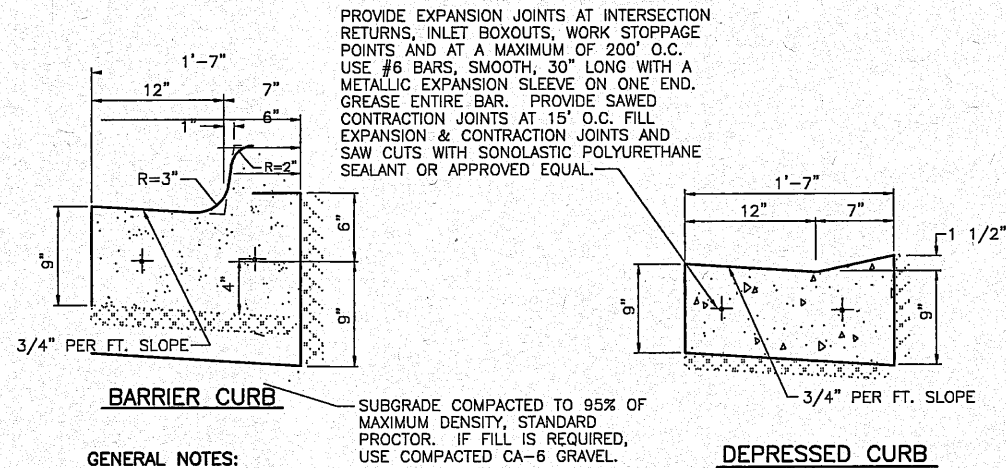


ROUTE NO.	SECTION	COUNTY	TOTAL SHEETS	THE SHEET
F.A.U. 6739	*	TAZEWELL	36	26
FED. ROAD DIST. NO. 7		ILLINOIS	PROJECT	M-5093-129
* 05-00103-00-FP CONTRACT NO. 89493				

**COMBINATION CONCRETE CURB AND GUTTER
CITY STANDARD TYPE B-6.12**



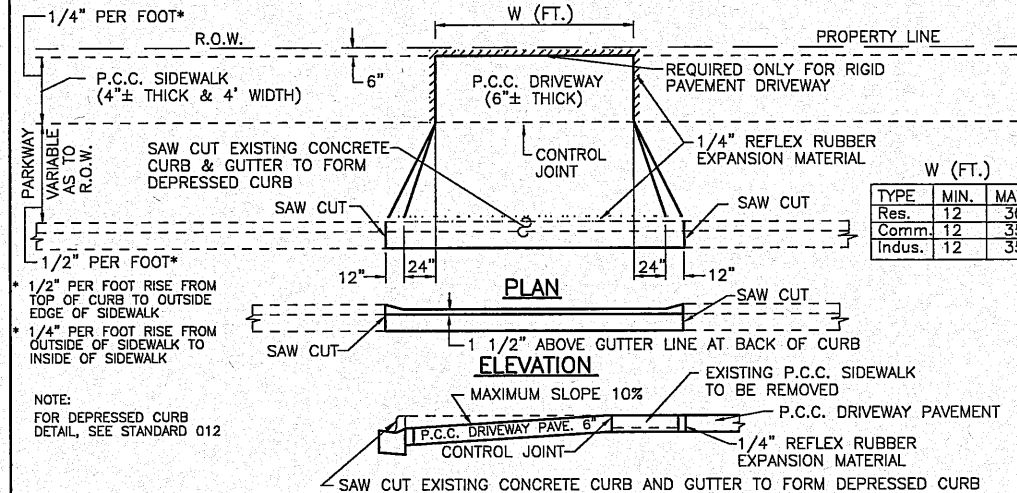
PROVIDE EXPANSION JOINTS AT INTERSECTION RETURNS, INLET BOXOUTS, WORK STOPPAGE POINTS AND AT A MAXIMUM OF 200' O.C. USE #6 BARS, SMOOTH, 30" LONG WITH A METALLIC EXPANSION SLEEVE ON ONE END. GREASE ENTIRE BAR. PROVIDE SAWED CONTRACTION JOINTS AT 15' O.C. FILL EXPANSION & CONTRACTION JOINTS AND SAW CUTS WITH SONOLASTIC POLYURETHANE SEALANT OR APPROVED EQUAL.

GENERAL NOTES:

- CONSTRUCTION SHALL BE IN ACCORDANCE WITH THE STATE OF ILLINOIS "STANDARD SPECIFICATIONS FOR ROAD AND BRIDGE CONSTRUCTION" CURRENT EDITION AND SUPPLEMENTAL SPECIFICATIONS, UNLESS OTHERWISE DIRECTED BY THE CITY ENGINEER.
- REFER TO SECTION 420 OF THE STANDARD SPECIFICATIONS.

City Of Washington	CONSTRUCTION STANDARD	DATE:	STANDARD NO.
		FEB. 2008	012

**DRIVEWAY ENTRANCE DETAIL FOR
CURB OPENINGS WITH SIDEWALK/PARKWAY**

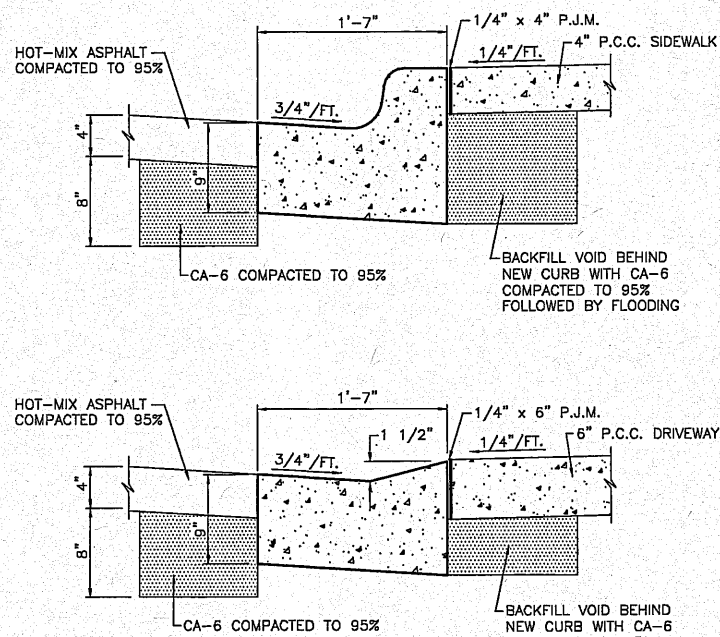


TYPE	MIN.	MAX.
Res.	12	30
Comm.	12	35
Indus.	12	35

GENERAL NOTES:

- CONSTRUCTION SHALL BE IN ACCORDANCE WITH THE STATE OF ILLINOIS "STANDARD SPECIFICATIONS FOR ROAD AND BRIDGE CONSTRUCTION" CURRENT EDITION AND SUPPLEMENTAL SPECIFICATIONS, UNLESS OTHERWISE DIRECTED BY THE CITY ENGINEER.
- 2% CROSS SLOPE MUST BE MAINTAINED THROUGH SIDEWALK PORTION OF DRIVEWAY.
- SIDEWALK AND CURB & GUTTER SHALL BE SAWED AT THE BEGINNING AND END OF THE REMOVAL SECTION.
- WHERE NO SIDEWALK EXISTS, THE DRIVE SHALL BE CONSTRUCTED AS SHOWN TO ACCOMMODATE FUTURE SIDEWALK.
- WHEN DRIVEWAY OPENING IS PROVIDED AT THE TIME OF CURB CONSTRUCTION, CONTRACTION JOINTS SHALL BE PLACED AT THE LOCATION OF THE SAW CUTS AS SHOWN.
- ALL SAW CUTS MUST BE A MINIMUM OF 1" DEEP.
- IN NO CASE SHALL CURB OPENING BE CONSTRUCTED BEYOND EXTENDED PROPERTY LINE OF ADJOINING PROPERTY.

City Of Washington	CONSTRUCTION STANDARD	DATE:	STANDARD NO.
		FEB. 2008	015

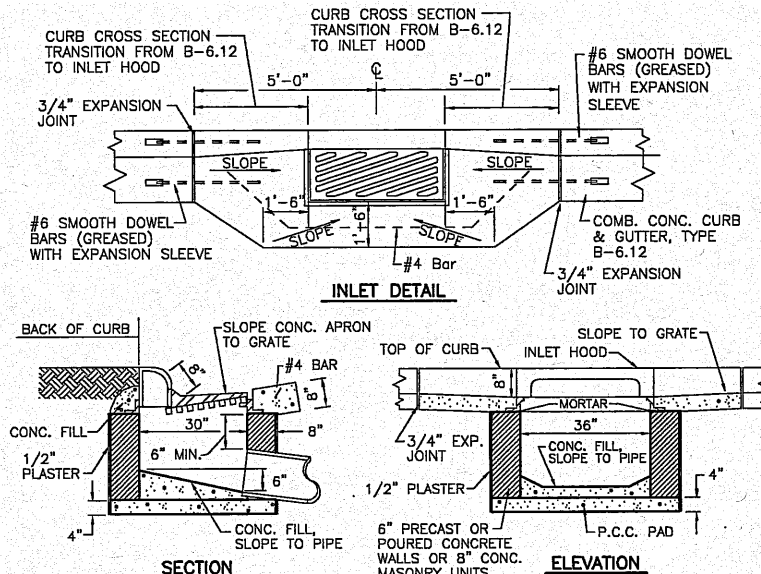


GENERAL NOTES:

- ALL DISTURBED SUBGRADE SHALL BE MECHANICALLY COMPACTED TO 95% PRIOR TO PLACEMENT OF CONCRETE. IF FILL IS REQUIRED, USE COMPACTED CA-6.
- HAND PLACED CURB & GUTTER SHALL BE FORMED ON FRONT AND BACK.
- CONCRETE SHALL BE PLACED IN A MANNER TO AVOID EXCESSIVE HONEY COMBING.
- P.J.M. SHALL BE REFLEX RUBBER EXPANSION MATERIAL AS MANUFACTURED BY THE J.D. RUSSELL COMPANY OR APPROVED EQUAL.

**COMBINATION CONCRETE CURB AND GUTTER REPLACEMENT
WITH CURBLINE SIDEWALK**

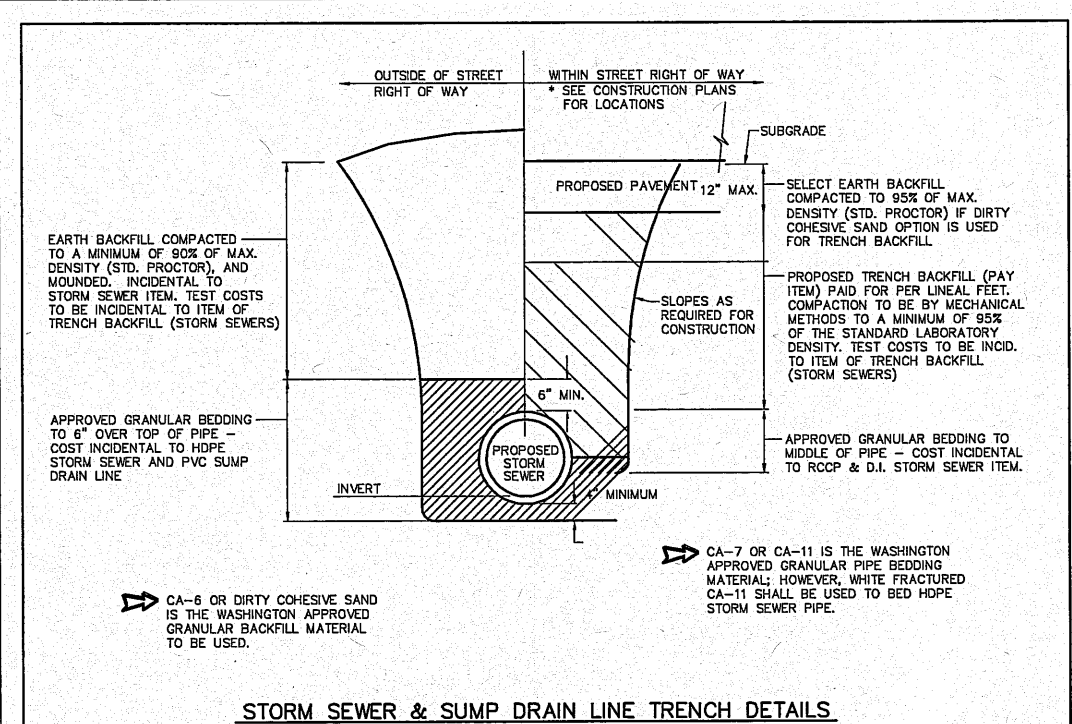
City Of Washington	CONSTRUCTION STANDARD	DATE:	STANDARD NO.
		FEB. 2008	013



GENERAL NOTES:

- THE CURB INLET FRAME, HOOD & GRATE SHALL BE EQUAL TO EAST JORDAN IRONWORKS #7510 OR NEENAH FOUNDRY R-3246-A, HEAVY DUTY CURB INLET WITH DIAGONAL BAR GRATE. TYPE T1 BACK TO BE CAST W/ A "FISH EMBLEM" AND MARKED "DUMP NO WASTE - DRAINS TO WATERWAY". CASTING AND GRATE TO BE COATED WITH A WATER BASE ASPHALT PAINT.
- BOLTS FOR THE HOOD SHALL BE PROVIDED WITH PROPER NUTS, WASHERS AND 1/4" MIN. STEEL PLATES TO COVER SLOTTED OPENINGS.
- GROUT INLET BOTTOMS TO DRAIN TO OUTLET PIPE.
- CASTING SHALL BE SET IN A FULL BED OF MORTAR.
- IF BRICK CONSTRUCTION, THE INSIDE AND OUTSIDE OF INLET WALLS SHALL BE MORTAR COATED.
- CUT ALL SEWER PIPES FLUSH WITH INTERIOR WALL OF INLET.
- MAINTAIN 8" MAXIMUM HOOD OPENING.
- THE 3" PVC DRAIN PIPE TO BE PLUGGED AT BOTH ENDS WITH NON-SHINK GROUT PRIOR TO PLACING FINAL PAVEMENT.
- THE 3/4" EXPANSION JOINT MATERIAL SHALL BE CELLU-CUSHION EXP 200, AS MANUFACTURED BY THE SEALED AIR CORPORATION, OR APPROVED EQUAL.
- INLET BOXES SHALL BE PLACED ACCURATELY. THE INSIDE BACK OF THE INLET BOX IS TO BE IN LINE WITH THE BACK OF THE PROPOSED OR EXISTING CURB & GUTTER. INLET BOXES THAT ARE MORE THAN 2" OUT OF ALIGNMENT, SHALL BE REMOVED AND RESET AT THE CONTRACTOR'S EXPENSE.
- INLET BOXES MAY BE EITHER CONSTRUCTED IN THE FIELD, USING 8" BRICK WALLS OR PRECAST BOXES WITH 6" WALLS. IN EITHER CASE, THE INLET BOXES SHALL BE CONSTRUCTED SO THE MAXIMUM ADJUSTMENT HEIGHT BETWEEN THE TOP OF THE MASONRY AND THE BOTTOM OF THE INLET CASTING SHALL NOT EXCEED 3". PRECAST ADJUSTING RINGS SET IN ROPE MASTIC ARE ALLOWED.

City Of Washington	CONSTRUCTION STANDARD	DATE:	STANDARD NO.
		FEB. 2008	021



STORM SEWER & SUMP DRAIN LINE TRENCH DETAILS

City Of Washington	CONSTRUCTION STANDARD	DATE:	STANDARD NO.
		FEB. 2008	023

MISCELLANEOUS CONSTRUCTION DETAILS DALLAS ROAD - PHASE ONE CITY OF WASHINGTON CONSTRUCTION STDS	AUSTIN ENGINEERING CO., INC. CIVIL ENGINEERS ILLINOIS	
FOR: CITY OF WASHINGTON	REVISION	PROJECT NUMBER 20-07-005
DATE 09/13/10	SCALE N/A	SHEET NO. 26 OF 36