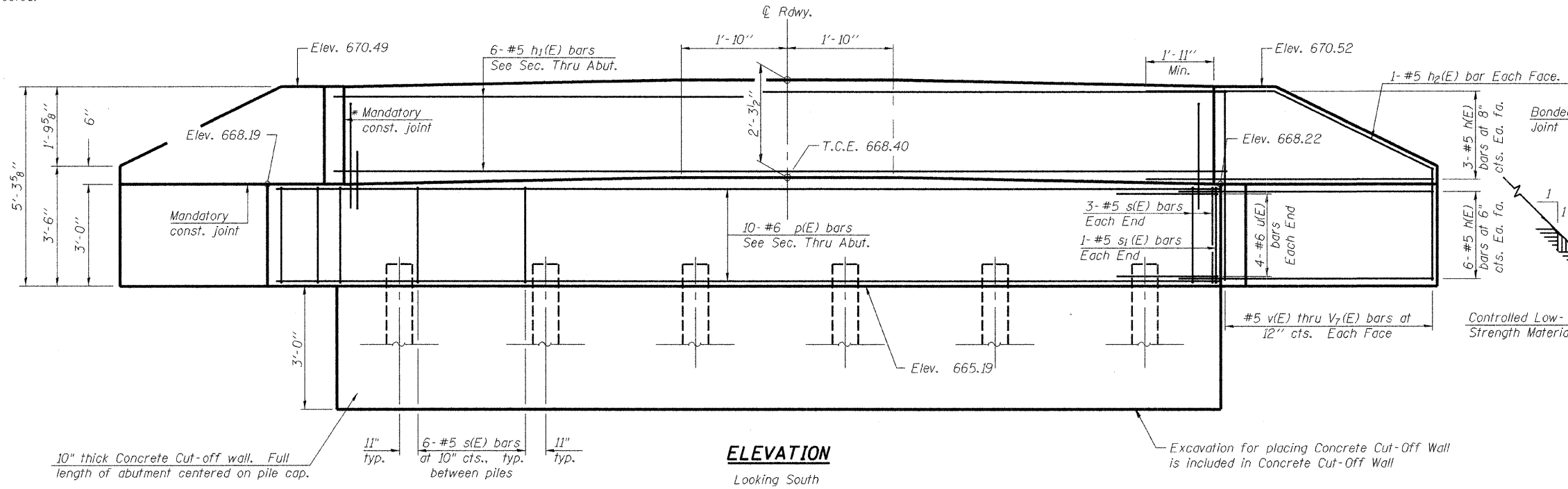
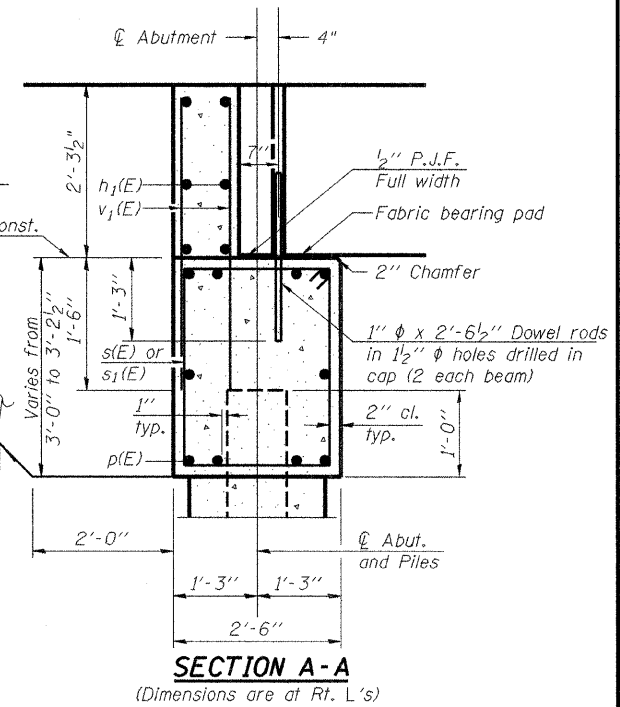


\* Cast top of wingwall flush with exterior beam face after beams have been erected.



**ELEVATION**  
Looking South



**SECTION A-A**  
(Dimensions are at Rt. L's)

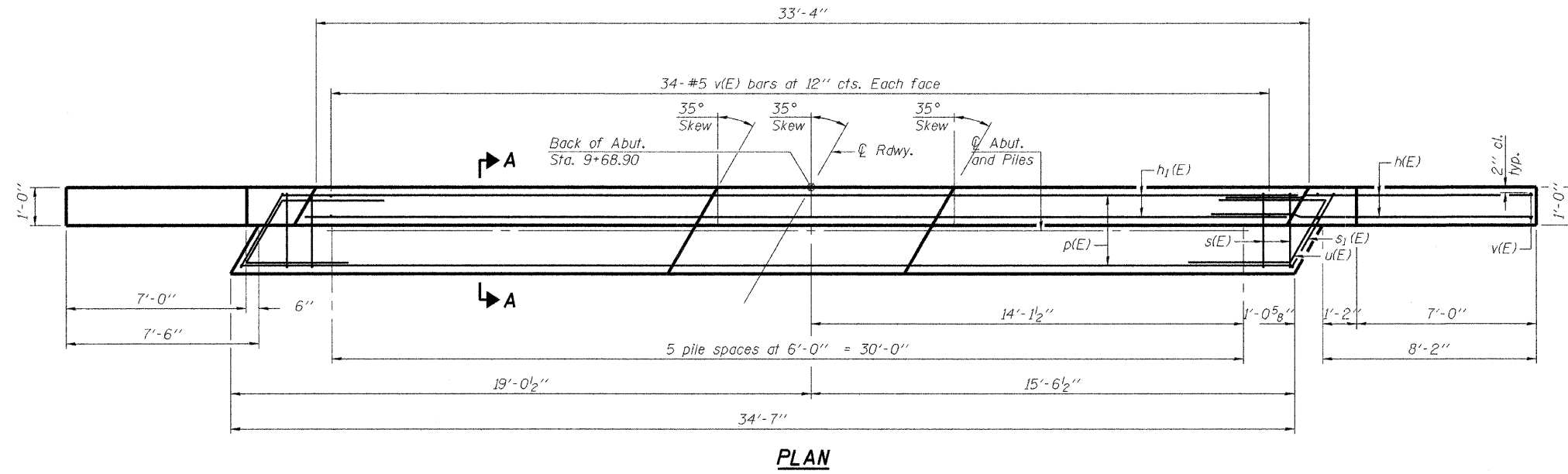
**BILL OF MATERIAL**

Bar	No.	Size	Length	Shape
h(E)	36	#5	10'-4"	—
h1(E)	6	#5	34'-3"	—
h2(E)	4	#5	11'-2"	—
p(E)	10	#6	34'-3"	—
s(E)	36	#5	10'-7"	□
s1(E)	2	#5	11'-5"	□
u(E)	8	#6	11'-5"	└
v(E)	72	#5	4'-11"	—
v1(E)	4	#5	4'-8"	—
v2(E)	4	#5	4'-5"	—
v3(E)	4	#5	4'-2"	—
v4(E)	4	#5	3'-11"	—
v5(E)	4	#5	3'-8"	—
v6(E)	4	#5	3'-5"	—
v7(E)	4	#5	3'-2"	—
Structure Excavation	Cu. Yd.		57.7	
Concrete Structures	Cu. Yd.		15.5	
Reinforcement Bars, Epoxy Coated	Pound		2210	
Furnishing Steel Piles HP 10x42	Foot		175	
Driving Piles	Foot		175	
Test Pile, Steel HP 10x42	Each		1	
Concrete Cut-Off Wall	Cu. Yd.		3.2	
Controlled Low-Strength Material	Cu. Yd.		32.5	

Notes:  
For details of piles see sheet 7 of 8.  
Cast backwall after beams have been erected.

**SOUTH ABUTMENT DETAILS  
STRUCTURE NO. 092-3518**

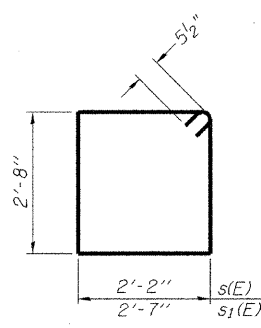
DATE: 09-20-2010 DRAWN BY: JEH CHECKED BY: DF



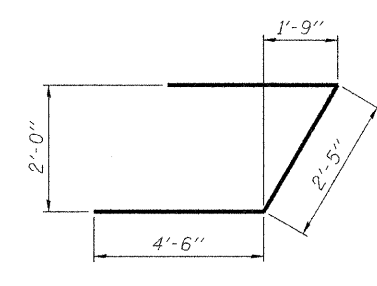
**PLAN**

**PILE DATA**

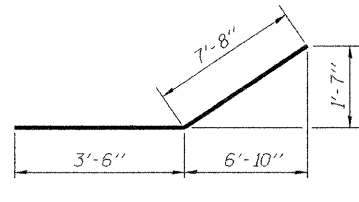
Type: Steel HP 10x42  
Nominal Required Bearing: 302K  
Factored Resistance Available: 166K  
Est. Length: 35'  
No. Production Piles: 5  
No. Test Piles: 1



**BARS s(E) & s1(E)**



**BAR u(E)**



**BAR h2(E)**

**ESI CONSULTANTS, LTD**  
753 WINDSOR ROAD  
CHARLESTON, IL 61920  
(217) 348-1950  
WWW.ESICONSULTANTS.LTD.COM  
ILLINOIS DEPARTMENT OF PROFESSIONAL REGULATION REGISTRATION #184-003689

AD-2742-R 11-1-09

SHEET NO. 5 OF 8 SHEETS	T.R.	SECTION	COUNTY	TOTAL SHEETS	SHEET NO.
	160	09-09123-00-BR	VERMILION	19	11
FED. ROAD DIST. NO. _			ILLINOIS FED. AID PROJECT		

PRINTED DATE: 10/10/2010 FILE NAME: I:\Projects\Vermlion\County of V\B-348, TR. 168 - Seebk Cr\ACADD\Drawings\Sheets\11 TR 168 S abutment.dgn