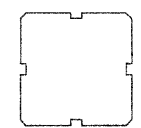
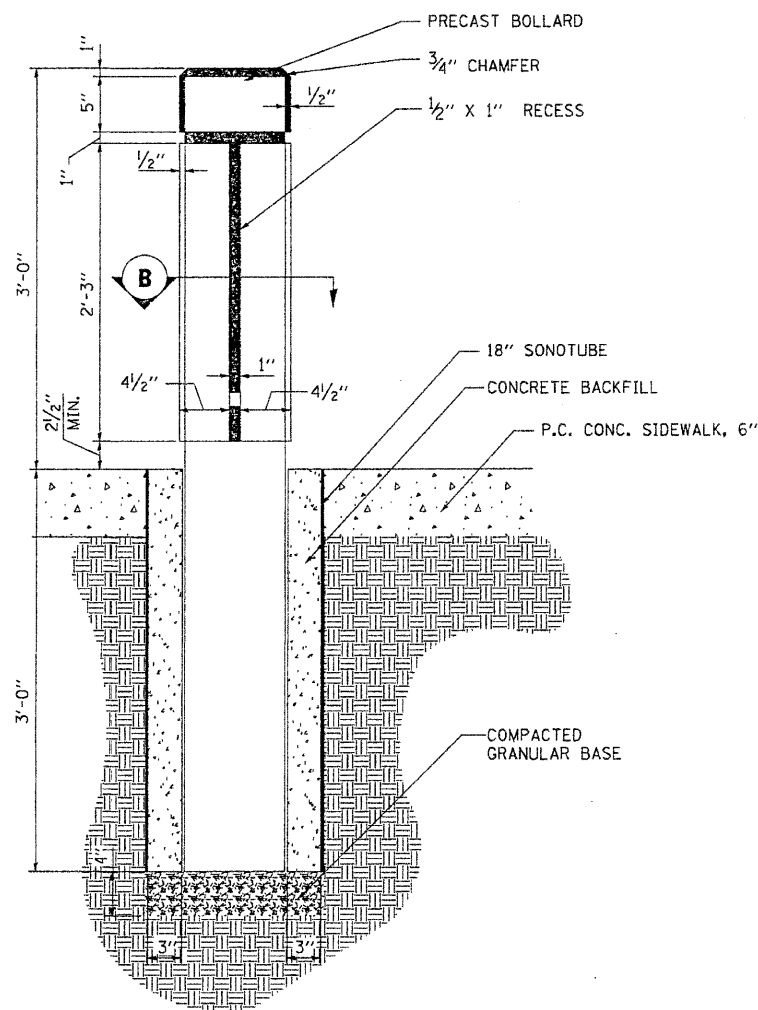


PLAN VIEW

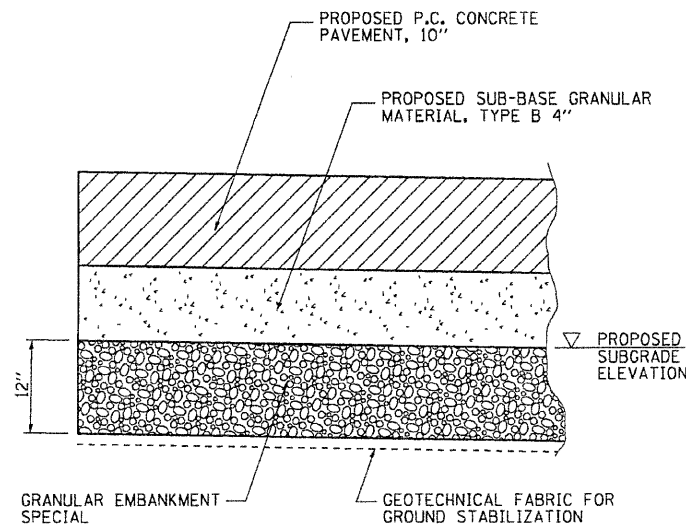


SECTION B



ORNAMENTAL BOLLARD

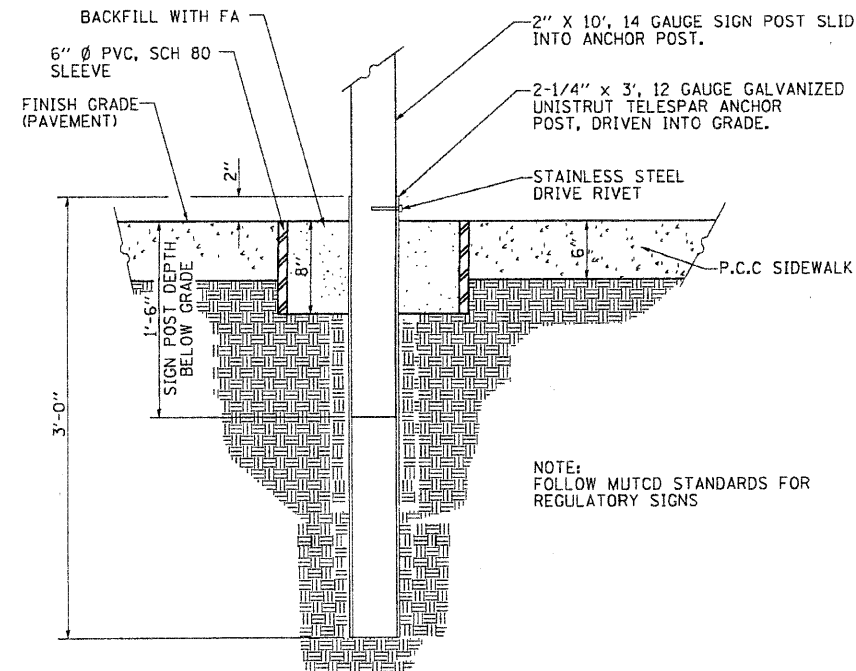
Revised 1-14-2011



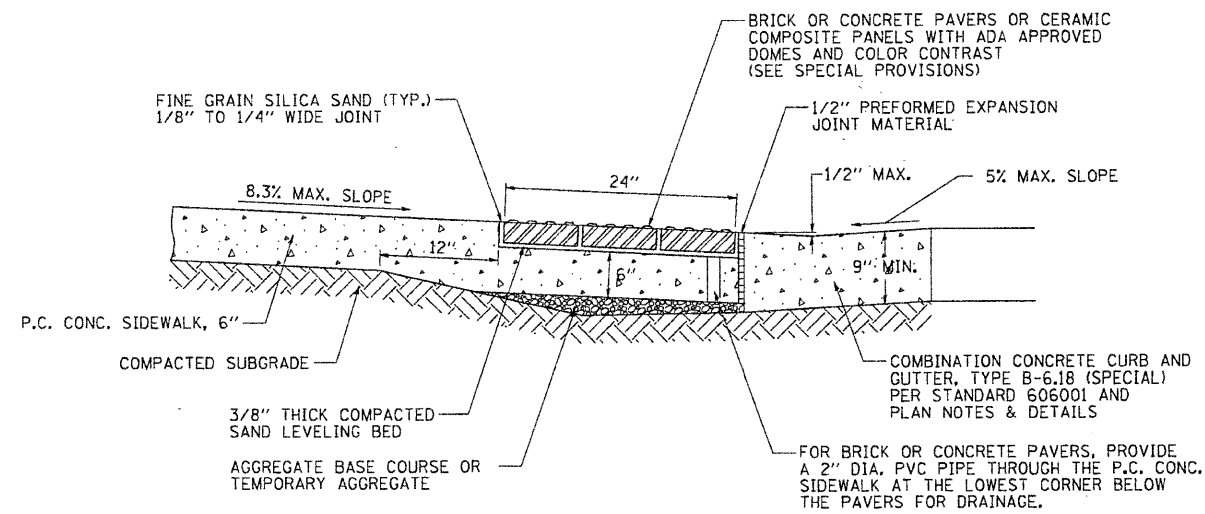
NOTES:

1. THIS WORK SHALL BE CONSTRUCTED AT LOCATIONS AS DIRECTED BY THE ENGINEER.
2. THE WORK SHALL BE IN ACCORDANCE WITH SECTION 210 OF THE STANDARD SPECIFICATIONS. THE GRANULAR EMBANKMENT, SPECIAL WILL BE PAID FOR AT THE CONTRACT UNIT PRICE PER TON. THE GEOTECHNICAL FABRIC FOR GROUND STABILIZATION WILL BE PAID FOR AT THE CONTRACT UNIT PRICE PER SQUARE YARD. THE EARTH REMOVAL BELOW THE PROPOSED SUBGRADE ELEVATION LINE WILL BE PAID FOR AS REMOVAL AND DISPOSAL OF UNSUITABLE MATERIAL.

SUBGRADE REMOVAL AND REPLACEMENT DETAIL



REGULATORY SIGN POST



SIDEWALK RAMP DETAIL

SIDEWALK GENERAL NOTES

THE COST OF CONSTRUCTING THE DEPRESSED CURB AS SHOWN SHALL BE CONSIDERED INCLUDED IN THE COST OF CONSTRUCTING THE COMBINATION CONCRETE CURB AND GUTTER TYPE B-6.18 (SPECIAL) AND NO ADDITIONAL COMPENSATION WILL BE ALLOWED.

THE COST OF FURNISHING AND INSTALLING THE 1/2" EXPANSION JOINTS AND THE COST OF CONSTRUCTING THE P.C.C. SIDEWALK THICKNESS TRANSITION, INCLUDING THE ADJACENT CURBING AS SHOWN, SHALL BE INCLUDED IN THE COST OF CONSTRUCTING P.C. CONCRETE SIDEWALK 6" AND NO ADDITIONAL COMPENSATION WILL BE ALLOWED.

THE DETECTABLE WARNINGS SHALL HAVE A CONTRASTING COLOR APPROVED BY THE ENGINEER AND SHALL BE CONSTRUCTED IN ACCORDANCE WITH STANDARD 424001 AND THE STANDARD SPECIFICATIONS. THE DETECTABLE WARNINGS WILL BE PAID FOR AT THE CONTRACT UNIT PRICE PER SQUARE FOOT FOR DETECTABLE WARNINGS.

TRANSVERSE SAWED JOINTS SHALL BE PLACED AT CENTERS EQUAL TO THE SIDEWALK WIDTH UNLESS OTHERWISE DIRECTED BY THE ENGINEER. THE MAXIMUM TRANSVERSE JOINT SPACING SHALL BE 10' UNLESS OTHERWISE DIRECTED BY THE ENGINEER. THE 3/4" EXPANSION JOINTS SHALL BE PLACED AT 100' CENTERS

FILE NAME =	USER NAME = Rob Heady	DESIGNED - JMM
L:\Champaign\180940180\Draw\CAOD_Sheets	Miscellaneous_Details.002.dgn	DRAWN - RAH
	PLDT SCALE = 20.0000' / IN.	CHECKED - JMM
	PLDT DATE = 1/13/2011	DATE - 10/15/2010



CITY OF CHAMPAIGN  
DEPARTMENT OF PUBLIC WORKS

MISCELLANEOUS DETAILS  
FOURTH STREET IMPROVEMENT  
CHAMPAIGN, ILLINOIS

SCALE: N.T.S. SHEET NO. 55 OF 55 SHEETS STA. N/A TO STA. N/A

F.A.U. RTE.	SECTION	COUNTY	TOTAL SHEETS	SHEET NO.
7171	10-00285-00-5P	CHAMPAIGN	55	55
CONTRACT NO. 91445			ILLINOIS FED. AID PROJECT	