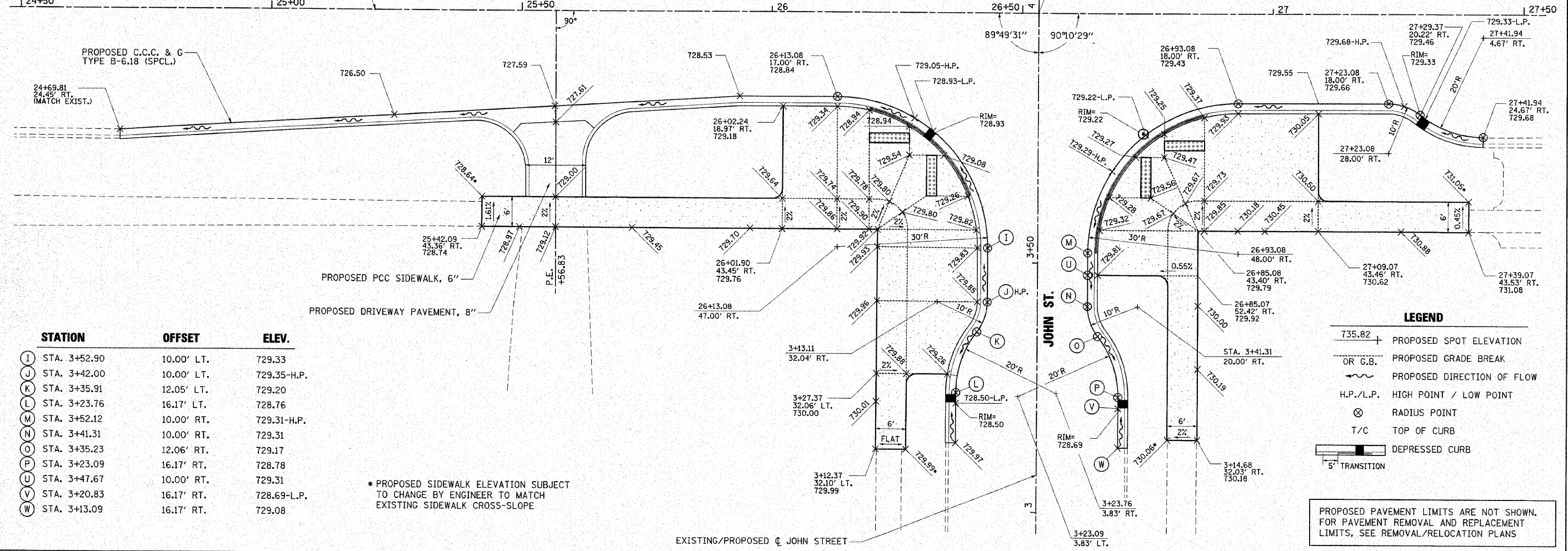
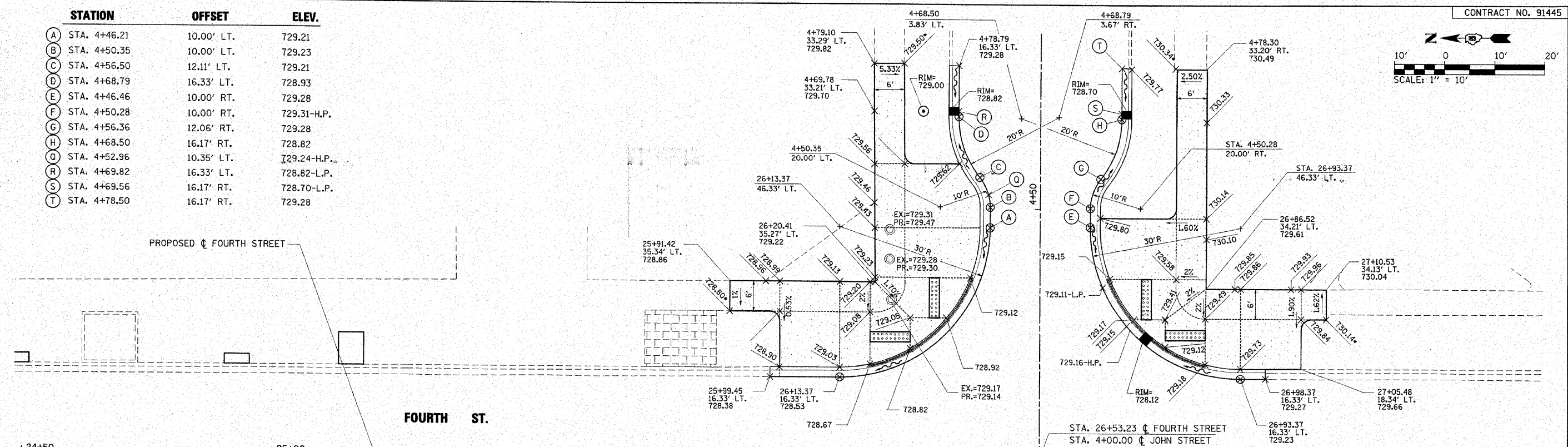


STATION	OFFSET	ELEV.
(A) STA. 4+46.21	10.00' LT.	729.21
(B) STA. 4+50.35	10.00' LT.	729.23
(C) STA. 4+56.50	12.11' LT.	729.21
(D) STA. 4+68.79	16.33' LT.	728.93
(E) STA. 4+46.46	10.00' RT.	729.28
(F) STA. 4+50.28	10.00' RT.	729.31-H.P.
(G) STA. 4+56.36	12.06' RT.	729.28
(H) STA. 4+68.50	16.17' RT.	728.82
(Q) STA. 4+52.96	10.35' LT.	729.24-H.P.
(R) STA. 4+69.82	16.33' LT.	728.82-L.P.
(S) STA. 4+69.56	16.17' RT.	728.70-L.P.
(T) STA. 4+78.50	16.17' RT.	729.28



**LEGEND**

- 735.82 + PROPOSED SPOT ELEVATION
- OR G.B. PROPOSED GRADE BREAK
- ~ PROPOSED DIRECTION OF FLOW
- H.P./L.P. HIGH POINT / LOW POINT
- ⊗ RADIUS POINT
- T/C TOP OF CURB
- DEPRESSED CURB
- 5' TRANSITION

PROPOSED PAVEMENT LIMITS ARE NOT SHOWN. FOR PAVEMENT REMOVAL AND REPLACEMENT LIMITS, SEE REMOVAL/RELOCATION PLANS

STATION	OFFSET	ELEV.
(I) STA. 3+52.90	10.00' LT.	729.33
(J) STA. 3+42.00	10.00' LT.	729.35-H.P.
(K) STA. 3+35.91	12.05' LT.	729.20
(L) STA. 3+23.76	16.17' LT.	728.76
(M) STA. 3+52.12	10.00' RT.	729.31-H.P.
(N) STA. 3+41.31	10.00' RT.	729.31
(O) STA. 3+35.23	12.06' RT.	729.17
(P) STA. 3+23.09	16.17' RT.	728.78
(U) STA. 3+47.67	10.00' RT.	729.31
(V) STA. 3+20.83	16.17' RT.	728.69-L.P.
(W) STA. 3+13.09	16.17' RT.	729.08

\* PROPOSED SIDEWALK ELEVATION SUBJECT TO CHANGE BY ENGINEER TO MATCH EXISTING SIDEWALK CROSS-SLOPE

FILE NAME =	USER NAME = Jim Michael	DESIGNED - BMB
\\champaign\100940100\draw\cadd\sheet	Intersection01-John.dgn	DRAWN - ZAH
	PLOT SCALE = 1/8"=1'-0"	CHECKED - JMM
	PLOT DATE = 10/18/2010	DATE = 10/15/2010

**CMT**  
CRAWFORD, MURPHY & TILLY, INC.  
CONSULTING ENGINEERS  
License No. 04-000613

**CITY OF CHAMPAIGN**  
DEPARTMENT OF PUBLIC WORKS

**INTERSECTION DETAILS**  
FOURTH STREET IMPROVEMENTS  
CHAMPAIGN, ILLINOIS

SCALE: 1" = 10' SHEET NO. OF SHEETS STA. TO STA.

F.A.U. RTE.	SECTION	COUNTY	TOTAL SHEETS	SHEET NO.
7171	10-00285-00-SP	CHAMPAIGN	55	24
				CONTRACT NO. 91445
ILLINOIS FED. AID PROJECT				