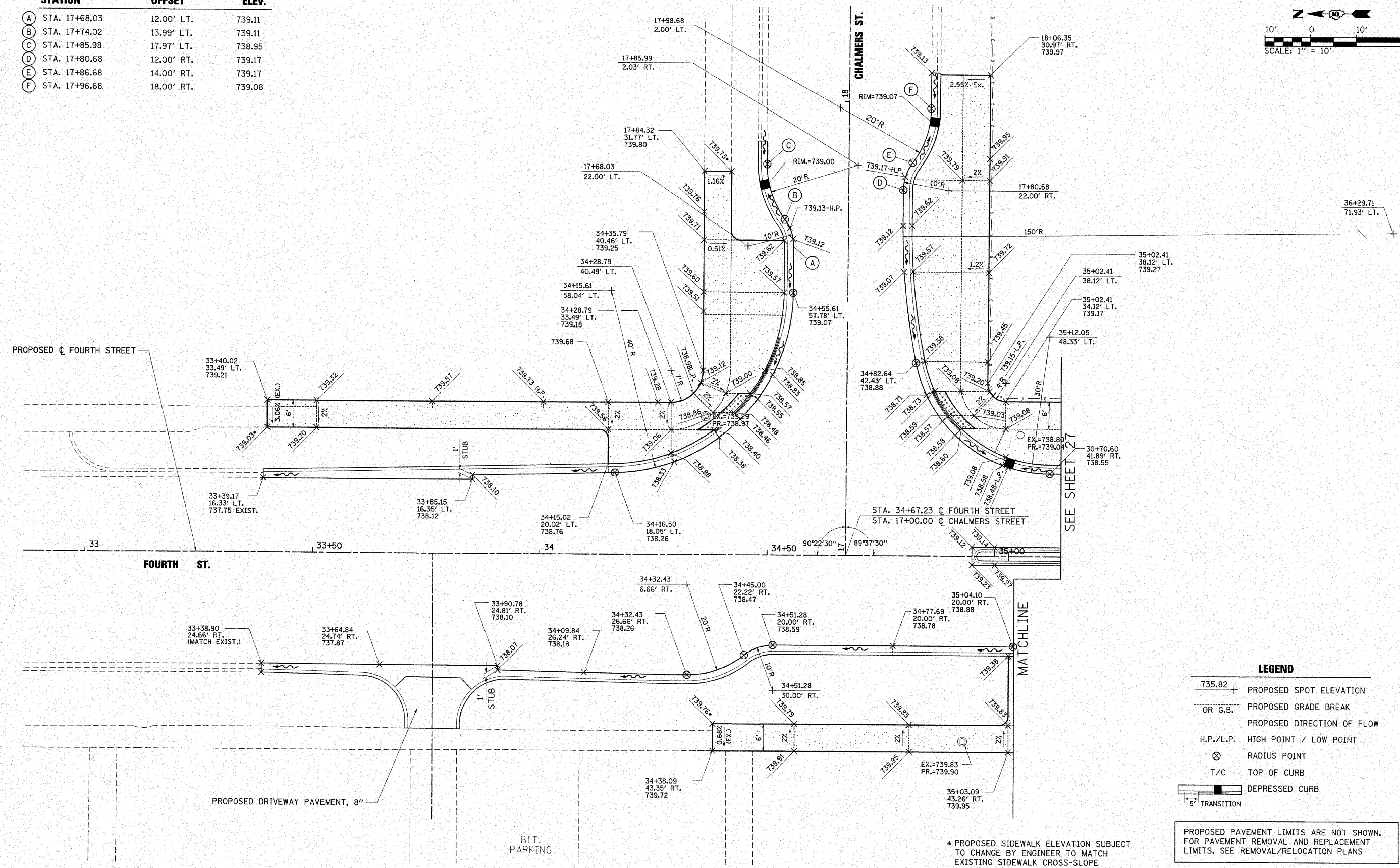
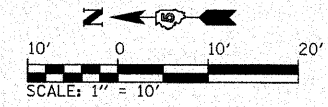


STATION	OFFSET	ELEV.
(A) STA. 17+68.03	12.00' LT.	739.11
(B) STA. 17+74.02	13.99' LT.	739.11
(C) STA. 17+85.98	17.97' LT.	738.95
(D) STA. 17+80.68	12.00' RT.	739.17
(E) STA. 17+86.68	14.00' RT.	739.17
(F) STA. 17+96.68	18.00' RT.	739.08



LEGEND

- 735.82 + PROPOSED SPOT ELEVATION
- OR G.B. PROPOSED GRADE BREAK
- PROPOSED DIRECTION OF FLOW
- H.P./L.P. HIGH POINT / LOW POINT
- ⊗ RADIUS POINT
- T/C TOP OF CURB
- DEPRESSED CURB
- 5' TRANSITION

PROPOSED PAVEMENT LIMITS ARE NOT SHOWN. FOR PAVEMENT REMOVAL AND REPLACEMENT LIMITS, SEE REMOVAL/RELOCATION PLANS

* PROPOSED SIDEWALK ELEVATION SUBJECT TO CHANGE BY ENGINEER TO MATCH EXISTING SIDEWALK CROSS-SLOPE

FILE NAME =	USER NAME = Jim Michael	DESIGNED - BMB	 CITY OF CHAMPAIGN DEPARTMENT OF PUBLIC WORKS	F.A.U. RTE. 7171	SECTION 10-00285-00-SP	COUNTY CHAMPAIGN	TOTAL SHEETS 55	SHEET NO. 26	
1:\champaign\100940120\draw\cadd\sheet5	Intersection03-Chalmers.dgn	DRAWN - BAH		SCALE: 1" = 10'	INTERSECTION DETAILS FOURTH STREET IMPROVEMENTS CHAMPAIGN, ILLINOIS		CONTRACT NO. 91445		
	PLOT SCALE = 1/8" = 1' IN.	CHECKED - JMM		CMT CRAWFORD, MURPHY & TILLY, INC. CONSULTING ENGINEERS License No. 084-000613	SHEET NO. OF SHEETS STA. TO STA.		ILLINOIS FED. AID PROJECT		
	PLOT DATE = 10/19/2018	DATE = 10/15/2010							