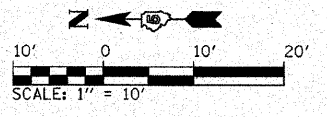
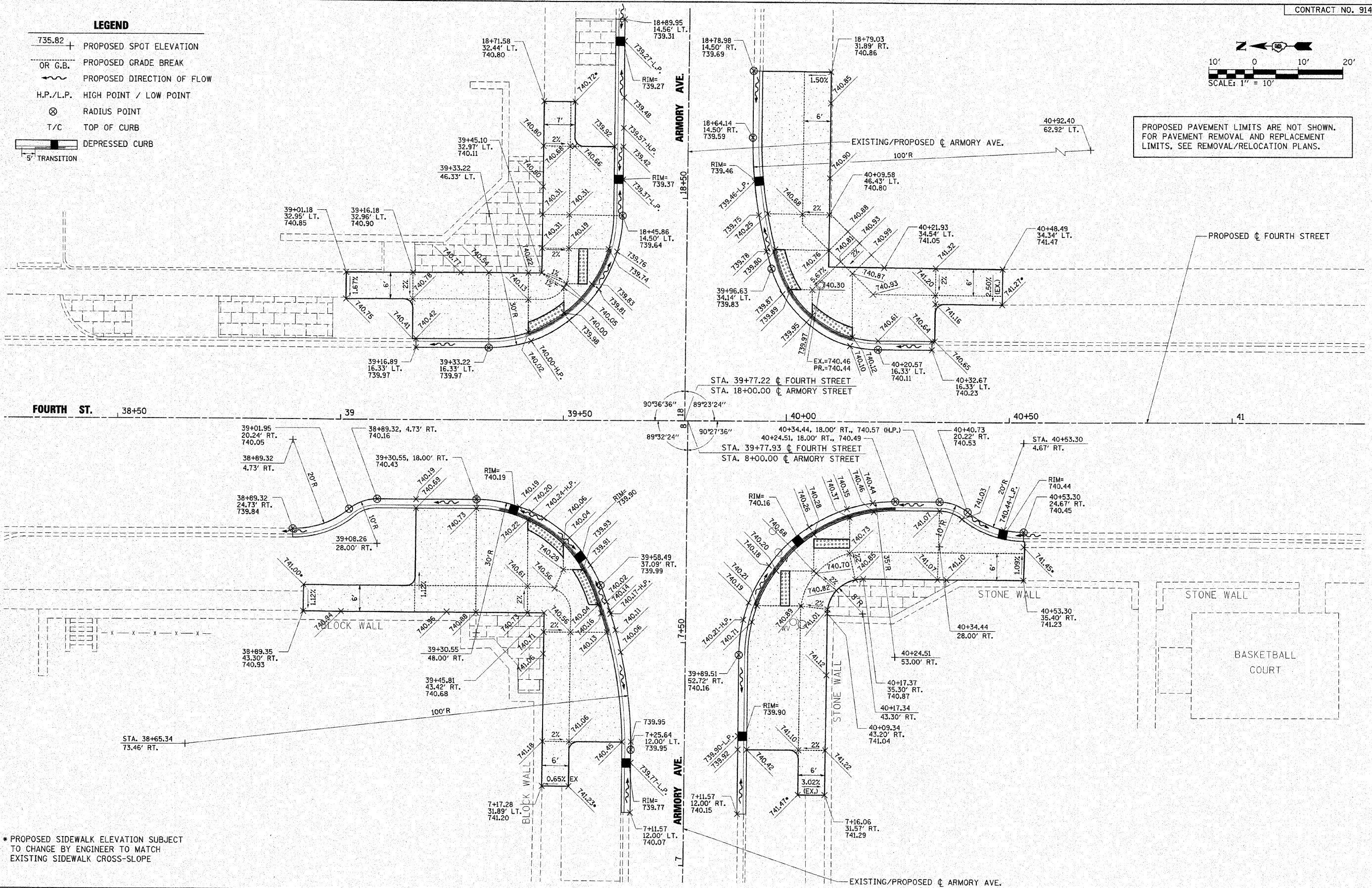


LEGEND

- 735.82 + PROPOSED SPOT ELEVATION
- OR G.B. PROPOSED GRADE BREAK
- ~ PROPOSED DIRECTION OF FLOW
- H.P./L.P. HIGH POINT / LOW POINT
- ⊗ RADIUS POINT
- T/C TOP OF CURB
- DEPRESSED CURB
- 5' TRANSITION



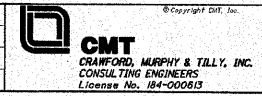
PROPOSED PAVEMENT LIMITS ARE NOT SHOWN. FOR PAVEMENT REMOVAL AND REPLACEMENT LIMITS, SEE REMOVAL/RELOCATION PLANS.



* PROPOSED SIDEWALK ELEVATION SUBJECT TO CHANGE BY ENGINEER TO MATCH EXISTING SIDEWALK CROSS-SLOPE

FILE NAME = 3:\champaign\100940109\draw\cadd\sheet5
 USER NAME = Jim Michael
 INTERSECTION05-Armory.dgn
 PLOT SCALE = 10.0000 / IN.
 PLOT DATE = 10/18/2010

DESIGNED - **BMB**
 DRAWN - **PAH**
 CHECKED - **SWM**
 DATE - 10/15/2010



**CITY OF CHAMPAIGN
 DEPARTMENT OF PUBLIC WORKS**

**INTERSECTION DETAILS
 FOURTH STREET IMPROVEMENTS
 CHAMPAIGN, ILLINOIS**

SCALE: 1" = 10' SHEET NO. OF SHEETS STA. TO STA.

F.A.U. RTE.	SECTION	COUNTY	TOTAL SHEETS	SHEET NO.
7171	10-00285-00-SP	CHAMPAIGN	55	28
CONTRACT NO. 91445			ILLINOIS FED. AID PROJECT	