

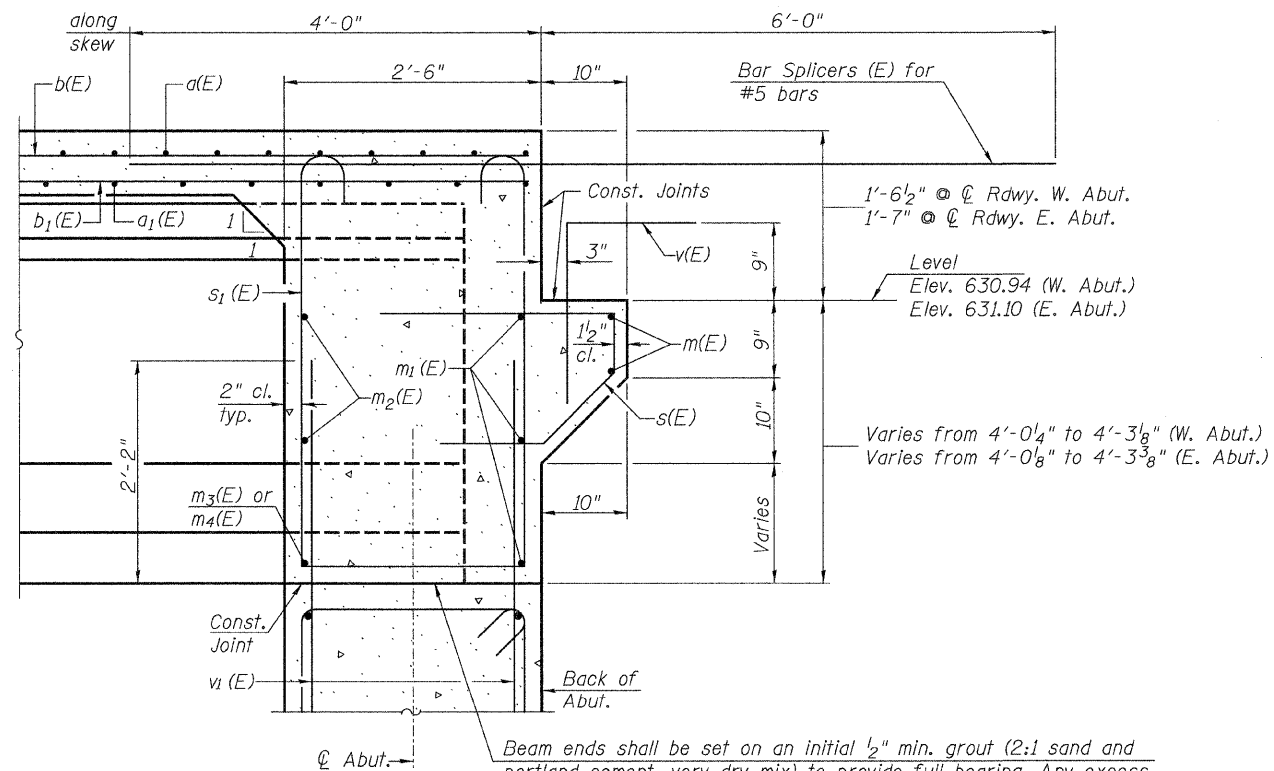
DIAPHRAGM ELEVATION AT ABUTMENT

Notes:
 Reinforcement bars in diaphragm are billed with superstructure on sheet 8 of 19.
 Concrete in diaphragm is included with Concrete Superstructure on sheet 8 of 19.
 The s(E) and s1(E) bars shall be placed parallel to beams. Spacing for these bars shall be at right angles to beams.
 For details of bars s(E) and s1(E) see sheet 8 of 19.
 For placement of v(E) bars see sheet 14 and 15 of 19.
 Bars indicated thus 37 x 5-#5 etc. indicates 37 lines of bars with 5 lengths per line.

* Cut to fit at exterior beams, if required.

MIN. BAR LAP

#6 bar = 2'-9"



Beam ends shall be set on an initial 1/2" min. grout (2:1 sand and portland cement, very dry mix) to provide full bearing. Any excess grout squeezed out from under the beam shall be removed. Cost included with Concrete Structures.

SECTION A-A

Dimensions at right angles to abutment, except as shown.

DIAPHRAGM DETAILS
C.H. 12 OVER HICKS CREEK
SECTION 07-00090-00-BR
MACOUPIN COUNTY

| | | | | | |
|-------------|-----------------------|----------------|--------------------------------|--------------|-----------|
| SHEET NO. 9 | ROUTE NO. | SECTION | COUNTY | TOTAL SHEETS | SHEET NO. |
| | CH 12 | 07-00090-00-BR | MACOUPIN | 77 | 19 |
| 19 SHEETS | SN 059-3556 | | CONTRACT NO. 93538 | | |
| | FED. ROAD DIST. NO. 7 | ILLINOIS | FED. AID PROJECT BRS-0732(148) | | |