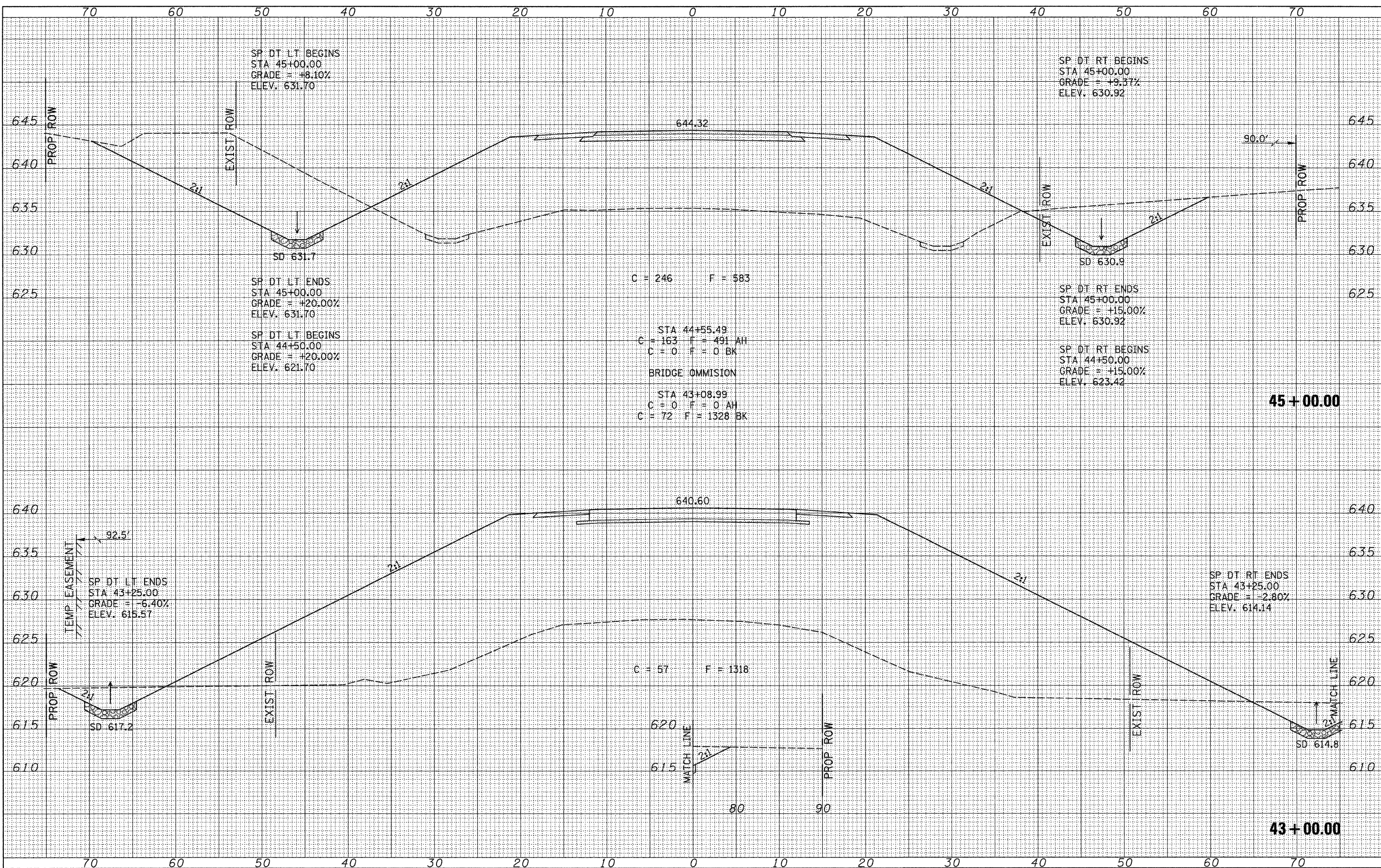


DATE	
BY	
FINAL SURVEY	
NOTED	
NOTE BOOK	
AREAS CHECKED	
NO.	

DATE	
BY	
ORIGINAL SURVEY	
NOTED	
NOTE BOOK	
AREAS CHECKED	
NO.	



FILE NAME = V:\Bridge\2576-1 Macoupin\2576XSSHTS.dgn
 USER NAME = othomas
 PLOT SCALE = 5.0000' / IN.
 PLOT DATE = 2/19/2010

DESIGNED -	REVISED -
DRAWN -	REVISED -
CHECKED -	REVISED -
DATE -	REVISED -

**MACOUPIN COUNTY
 COUNTY HIGHWAY 12
 OVER HICKS CREEK AND JOES CREEK**

CROSS SECTIONS
 SCALE: 1"=5'
 SHEET NO. 22 OF 26 SHEETS
 STA. 43+00.000 TO STA. 45+00.000

F.A.S. RTE.	SECTION	COUNTY	TOTAL SHEETS	SHEET NO.
732	07-00090-00-BR	MACOUPIN	77	73
CONTRACT NO. 93538			FED. ROAD DIST. NO. 7 ILLINOIS	
FED. AID PROJECT BR5-0732(148)				