

STATE OF ILLINOIS
DEPARTMENT OF TRANSPORTATION
PLANS FOR
PROPOSED LOCAL AGENCY IMPROVEMENT
FEDERAL AID URBAN PROJECT

ROUTE NO.	SECTION	CITY	TOTAL SHEETS	SHEET NO.
	05-00001-00-RP	OREANA	46	1
FED. ROAD DIST. NO.	ILLINOIS		PROJECT HPP-0913 (001)	

CONTRACT NUMBER 95537

PLAN 1" = 20'
PROFILE HOR. 1" = 20'
PROFILE VERT. 1" = 2'
CROSS SECTIONS HOR. 1" = 5'
VERT. 1" = 2'

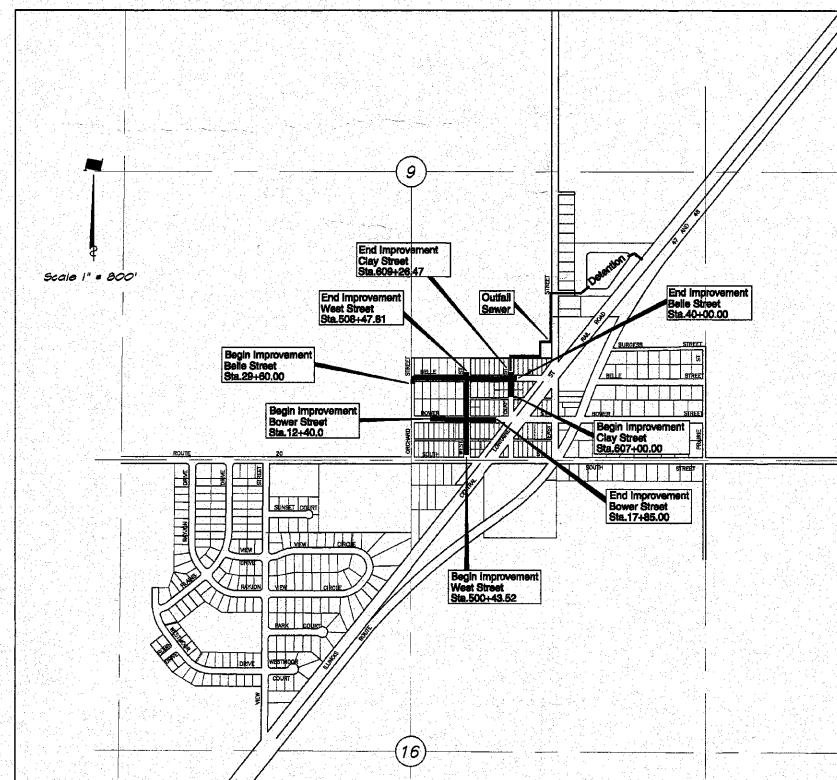
VILLAGE OF OREANA, ILLINOIS

SAFETEA-LU PROJECT

SECTION 05-00001-00-RP
PROJECT HPP-0913 (001)
C -97-033-08
MACON COUNTY, ILLINOIS

UTILITIES

AMEREN IP 500 S. 27TH STREET DECATUR, IL 62521	GAS AND ELECTRIC	800-892-7715
SBC 990 SOUTHSIDE DRIVE DECATUR, IL 62521	TELEPHONE POLES, BOXES AND CABLES	217-429-8596
COMCAST 1275 N. WATER STREET DECATUR, IL 62521	POLES, BOXES AND CABLES	217-424-8474
VILLAGE OF OREANA 600 N. EAST ST. OREANA, IL 62554	STREET AND WATER DEPT.	217-468-2112



LOCATION MAP
TOTAL LENGTH OF PROJECT = 2534.78 FEET = 0.480 MILES
NET LENGTH OF PROJECT = 2534.78 FEET = 0.480 MILES

DESIGN DESIGNATION
0045 (2018) LOCAL 0.077 (PCC - 20)
DESIGN SPEED = 25 MPH
ADT (2018) = 400 PC=348 S U=50 MV=2

IDOT STANDARDS

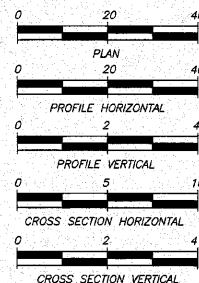
- 280001-05 Temporary Erosion Control Systems
- 420001-07 Pavement Joints
- 420101-04 24' Jointed PCC Pavement
- 424001-05 Curb Ramps for Sidewalks
- 542301-03 Precast Reinforced Concrete Flared End Section
- 602301-03 Inlet, Type A
- 602401-03 Manhole, Type A
- 602406-04 Manhole, Type A - 6' Diameter
- 602411-02 Manhole, Type A - 7' Diameter
- 602416-02 Manhole, Type A - 8' Diameter
- 602421-02 Manhole, Type A - 9' Diameter
- 602801-02 Precast Reinforced Concrete Flat Slab Top
- 604001-03 Frames and Lids, Type 1
- 606001-04 Concrete Curb and Combination Concrete Curb and Gutter
- 684001-02 Chain Link Fence
- 701901-01 Traffic Control Devices
- 780001-02 Typical Pavement Markings
- BLR22-6 Typical Application of Traffic Control Devices for Construction on Rural Local Highways

BAINBRIDGE - GEE - MILANSKI & ASSOC., INC.
1870 S. TAYLORVILLE RD.
DECATUR, ILLINOIS 62521
TELE: (217) 423-8600

INDEX TO SHEETS
SEE SHEET NO. 2

N O T E

Underground facilities, structures and utilities have been plotted from available surveys and records and their locations must be considered approximate only. There may be others, the existence of which is presently not known. The depth of utilities is assumed to be normal and customary. Contractor shall verify location and depth of all utilities prior to construction.



IT'S THE LAW IN ILLINOIS
PRIOR TO COMMENCING ANY CONSTRUCTION OR EXCAVATION, THE CONTRACTOR SHALL VERIFY THE LOCATION OF ALL UTILITIES BY CALLING:
J.U.L.I.E.* 1 - 8 0 0 - 8 9 2 - 0 1 2 3

* Joint Utilities Locating Information for Excavators.



by *Michael H. Price*
date 10/15/2010
expires NOV.30, 2011

STATE OF ILLINOIS DEPARTMENT OF TRANSPORTATION	
Approved	10/18/2010 <i>Daniel M. Fisher</i> Village of Oreana, President
Passed	11-16-10 <i>Michael D. ...</i> District 7 Engineer of Local Roads & Streets
Releasing for Bid Based on Limited Review	11-16-10 <i>Robert J. ...</i> Deputy Director of Highways, Region 4 Engineer