

| ROUTE NO.           | SECTION | CITY   | TOTAL SHEETS                    | SHEET NO. |
|---------------------|---------|--------|---------------------------------|-----------|
| 00-00001-00-RP      |         | OREANA | 46                              | 14        |
| FED. ROAD DIST. NO. |         |        | ILLINOIS PROJECT HFP-0813 (001) |           |

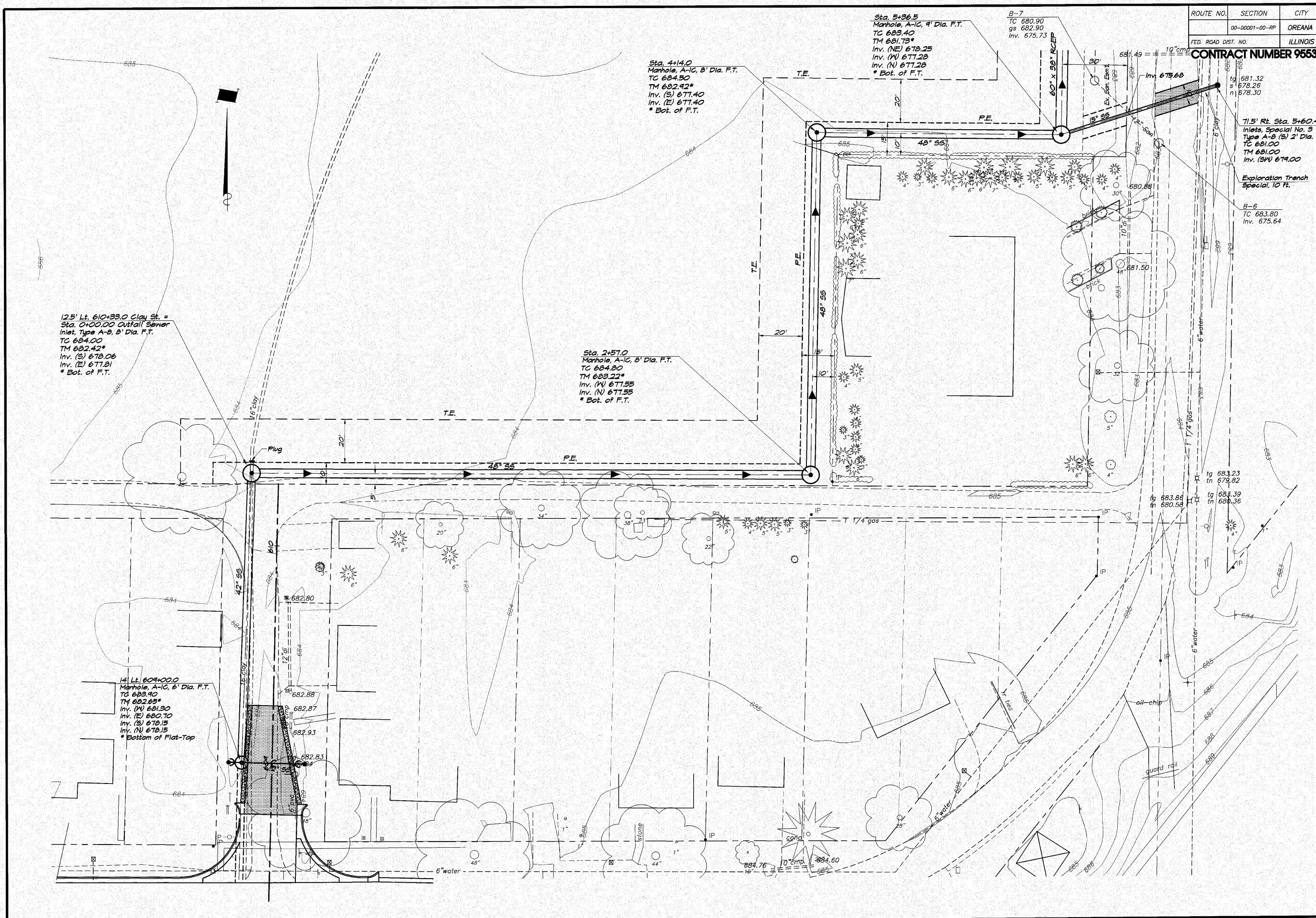
CONTRACT NUMBER 95537

| REVISIONS | SCALE    | DESIGNED | DRAWN | DATE      |
|-----------|----------|----------|-------|-----------|
| NO. 1     | 1" = 20' | MHP      | LES   | Feb. 2009 |
| BY        |          |          |       |           |
| DATE      |          |          |       |           |
| JOB NO.   |          |          |       |           |
| JOB NO.   |          |          |       |           |
| JOB NO.   |          |          |       |           |

**ENBRIDGE & ASSOCIATES, INC.**  
 Consulting Engineers  
**LEWIS & CLARK**  
 1670 SOUTH TAYLORVILLE ROAD  
 DECATUR, ILLINOIS 62526  
 Illinois License 184-001255

**VILLAGE OF OREANA, ILLINOIS**  
 SAFE TEA-LU PROJECT  
**OUTLET SEWER PROFILE**  
 STATION 689+00.00 TO 14+86.00

|   |
|---|
|   |
| SHEET NO.<br><b>14</b><br>OF<br><b>46</b> |



12.5' Lt. 610+33.0 Clay St. =  
 Sta. 0+00.00 Outfall Sewer  
 Inlet, Type A-B, 8' Dia. F.T.  
 TC 684.00  
 TM 682.42\*  
 Inv. (S) 678.06  
 Inv. (E) 677.81  
 \* Bot. of F.T.

Sta. 2+57.0  
 Manhole, A-C, 8' Dia. F.T.  
 TC 684.80  
 TM 683.22\*  
 Inv. (N) 677.55  
 Inv. (E) 677.55  
 \* Bot. of F.T.

Sta. 4+14.0  
 Manhole, A-C, 8' Dia. F.T.  
 TC 684.50  
 TM 682.42\*  
 Inv. (S) 677.40  
 Inv. (E) 677.40  
 \* Bot. of F.T.

Sta. 5+36.5  
 Manhole, A-C, 9' Dia. F.T.  
 TC 683.40  
 TM 681.73\*  
 Inv. (NE) 678.25  
 Inv. (N) 677.28  
 Inv. (E) 677.28  
 \* Bot. of F.T.

B-7  
 TC 680.90  
 gs 682.90  
 Inv. 675.73

71.5' Rt. Sta. 5+60.4  
 Inlets, Special No. 3  
 Type A-B (S) 2' Dia.  
 TC 681.00  
 TM 681.00  
 Inv. (SN) 674.00

Exploration Trench  
 Special, 10 FT.

B-6  
 TC 683.80  
 Inv. 675.64

14' Lt. 609+00.0  
 Manhole, A-C, 8' Dia. F.T.  
 TC 683.40  
 TM 682.65\*  
 Inv. (N) 681.30  
 Inv. (E) 680.70  
 Inv. (S) 678.15  
 Inv. (W) 678.15  
 \* Bottom of Flat-Top