

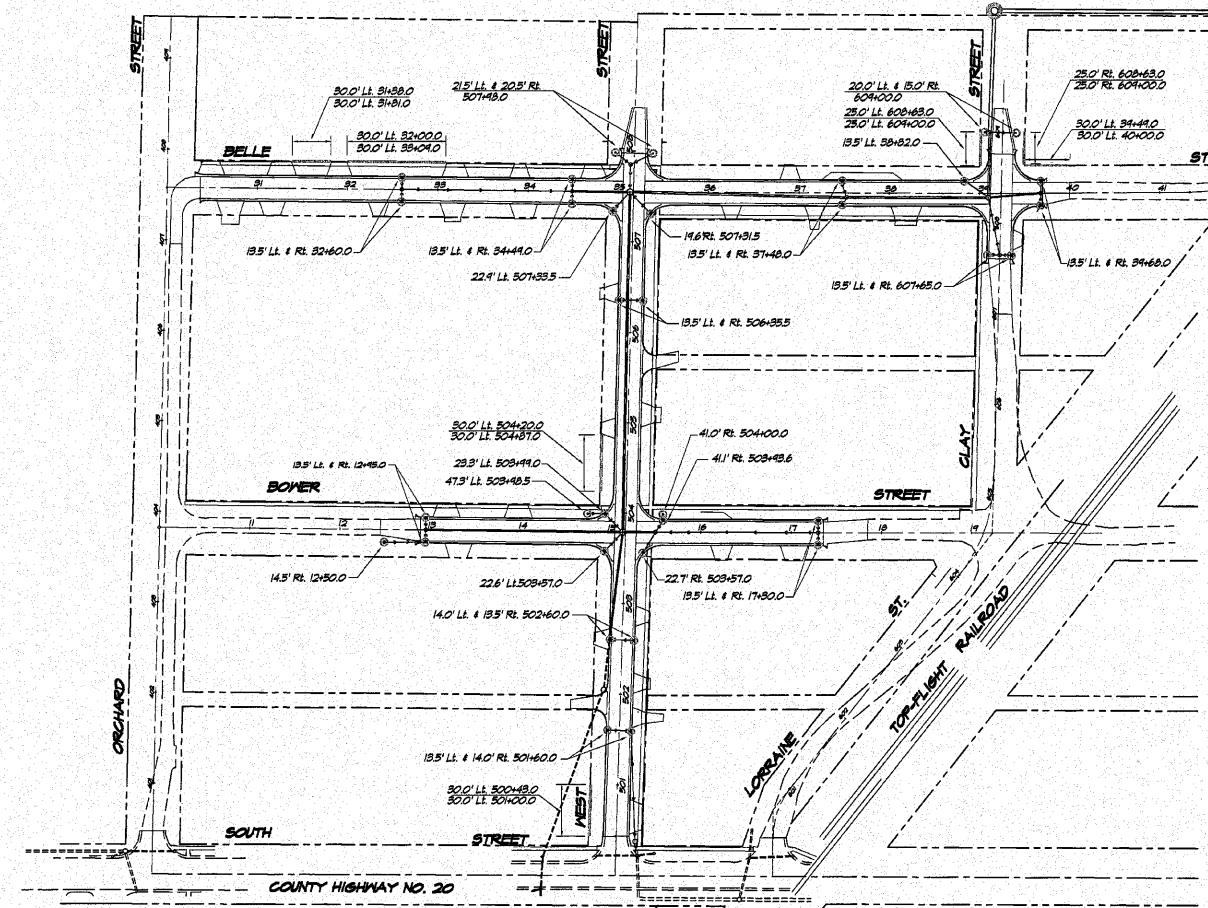
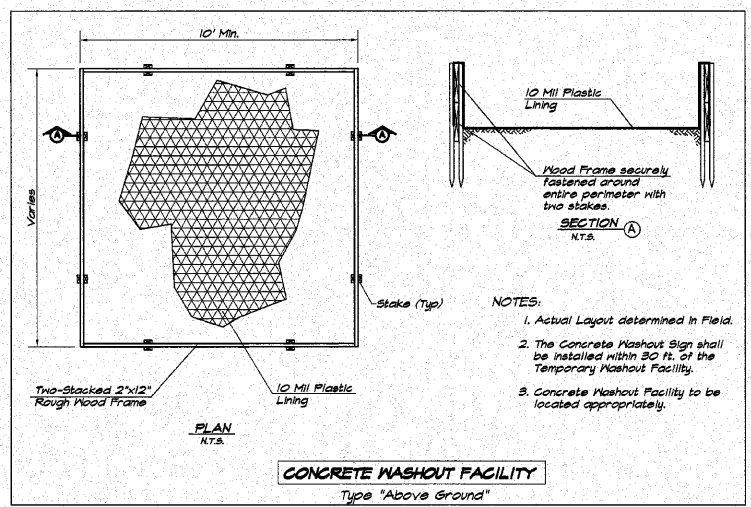
ROUTE NO.	SECTION	CITY	TOTAL SHEETS	SHEET NO.
	05-00001-00-RP	OREANA	46	24
FED. ROAD DIST. NO.	ILLINOIS		PROJECT	HPP-0913 (001)

CONTRACT NUMBER 95537

REVISIONS	NO.	BY	DATE
	1	MJP	7-30-04
	2	MJP	4-4-04

DESIGNED: MJP  
 DRAWN: Les Jenkins  
 FIELD BOOK: xxx  
 SCALE: 1/4" = 100'  
 DATE: July 2006  
 JOB NO.: 05-CH04

**BAINBRIDGE & ASSOCIATES, INC.**  
 Consulting Engineers  
 1670 SOUTH TAYLORVILLE ROAD  
 DECATUR, ILLINOIS 62526  
 License 184-001265

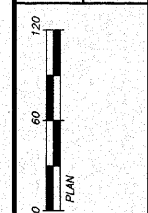


Location	28000400	28000500
	Perimeter Erosion Barrier Foot	Inlet & Pipe Protection Each
<b>West Street</b>		
30.0' Lt. 500+48.0 - 30.0' Lt. 501+00.0	57	
13.5' Lt. 501+60.0		
14.0' Rt. 501+60.0		
14.0' Lt. 502+60.0		
13.5' Rt. 502+60.0		
22.5' Lt. 503+57.0		
22.7' Rt. 503+57.0		
41.1' Rt. 503+48.6		
42.3' Lt. 503+48.5		
25.3' Lt. 503+49.0		
41.0' Rt. 504+00.0		
30.0' Lt. 504+20.0 - 30.0' Lt. 504+87.0	67	
13.5' Lt. 506+35.5		
14.6' Rt. 507+31.5		
22.4' Lt. 507+33.5		
21.5' Lt. 507+48.0		
20.5' Rt. 507+48.0		
<b>Clay Streets</b>		
13.5' Lt. 607+65.0		
13.5' Rt. 607+65.0		
25.0' Lt. 608+63.0 - 25.0' Lt. 609+00.0	37	
25.0' Rt. 608+63.0 - 25.0' Rt. 609+00.0	37	
20.0' Lt. 609+00.0		
15.0' Rt. 609+00.0		
<b>Bower Street</b>		
14.5' Lt. 12+50.0		
13.5' Lt. 12+45.0		
13.5' Lt. 12+45.0		
13.5' Lt. 12+49.0		
13.5' Lt. 17+30.0		
13.5' Rt. 17+30.0		
<b>Belle Street</b>		
30.0' Lt. 31+38.0 - 30.0' Lt. 31+81.0	45	
30.0' Lt. 32+00.0 - 30.0' Lt. 33+09.0	109	
30.0' Lt. 32+80.0		
13.5' Rt. 32+50.0		
13.5' Lt. 34+49.0		
13.5' Rt. 34+49.0		
13.5' Lt. 37+48.0		
13.5' Rt. 37+48.0		
13.5' Lt. 38+82.0		
13.5' Lt. 34+68.0		
13.5' Rt. 34+68.0		
30.0' Lt. 34+49.0 - 30.0' Lt. 40+00.0	51	
<b>OUTFALL SEWER</b>		
71.5' Lt. 5+60.4		
35.0' Rt. 7+41.5		
78.0' Rt. 7+41.5		
37.0' Lt. 10+06.5		
100+00.0		
<b>TOTALS</b>	<b>401</b>	<b>59</b>

**LEGEND**

- PERIMETER EROSION BARRIER
- INLET & PIPE PROTECTION
- ▨ STABILIZED CONSTRUCTION EXIT

VILLAGE OF OREANA, ILLINOIS  
 SAFE TEALU PROJECT  
 EROSION CONTROL PLAN



SHEET NO. 24 OF 46