

SUMMARY OF QUANTITIES			
PAY ITEM NUMBER	PAY ITEM DESCRIPTION	UNIT	TOTAL QUANTITY
20200100	EARTH EXCAVATION	CU YD	2023
20800150	TRENCH BACKFILL	CU YD	23
25000100	SEEDING, CLASS 1	ACRE	0.56
25000400	NITROGEN FERTILIZER NUTRIENT	POUND	56
25000500	PHOSPHORUS FERTILIZER NUTRIENT	POUND	56
25000600	POTASSIUM FERTILIZER NUTRIENT	POUND	56
25100115	MULCH, METHOD 2	ACRE	0.56
25200100	SODDING	SQ YD	290
28000250	TEMPORARY EROSION CONTROL SEEDING	POUND	61
28000305	TEMPORARY DITCH CHECKS	FOOT	48
28000400	PERIMETER EROSION BARRIER	FOOT	1246
28000500	INLET AND PIPE PROTECTION	EACH	12
31100100	SUBBASE GRANULAR MATERIAL, TYPE A	TON	2269
31101900	SUBBASE GRANULAR MATERIAL, TYPE C	TON	177
40600100	BITUMINOUS MATERIALS (PRIME COAT)	GALLOV	1051
40600982	HOT-MIX ASPHALT SURFACE REMOVAL - BUTT JOINT	SQ YD	185
40603090	HOT-MIX ASPHALT BINDER COURSE, IL-19.0, N90	TON	904
40603545	POLYMERIZED HOT-MIX ASPHALT SURFACE COURSE, MIX "D", N90	TON	254
40800050	INCIDENTAL HOT-MIX ASPHALT SURFACING	TON	21
42001300	PROTECTIVE COAT	SQ YD	1012
42400100	PORTLAND CEMENT CONCRETE SIDEWALK 4 INCH	SQ FT	2082
42400800	DETECTABLE WARNINGS	SQ FT	240
44000100	PAVEMENT REMOVAL	SQ YD	2064
50105220	PIPE CULVERT REMOVAL	FOOT	181
54200220	PIPE CULVERTS, CLASS D, TYPE 1 15"	FOOT	24
54200223	PIPE CULVERTS, CLASS D, TYPE 1 18"	FOOT	7
54215550	METAL END SECTIONS 15"	EACH	2
54215553	METAL END SECTIONS 18"	EACH	1
550A0050	STORM SEWERS, CLASS A, TYPE 1 12"	FOOT	174
550A0070	STORM SEWERS, CLASS A, TYPE 1 15"	FOOT	156
550A0090	STORM SEWERS, CLASS A, TYPE 1 18"	FOOT	240
60235700	INLETS, TYPE A, TYPE 3 FRAME AND GRATE	EACH	1

SUMMARY OF QUANTITIES			
PAY ITEM NUMBER	PAY ITEM DESCRIPTION	UNIT	TOTAL QUANTITY
60240385	INLETS, TYPE B, WITH SPECIAL FRAME AND GRATE	EACH	1
60500060	REMOVING INLETS	EACH	1
60605000	COMBINATION CONCRETE CURB AND GUTTER, TYPE B-6.24	FOOT	1274.5
60607200	COMBINATION CONCRETE CURB AND GUTTER, TYPE B-9.18 (SPECIAL)	FOOT	166.5
60608300	COMBINATION CONCRETE CURB AND GUTTER, TYPE M-2.12	FOOT	273.5
60611700	COMBINATION CONCRETE CURB AND GUTTER, TYPE B (SPECIAL)	FOOT	313.5
60618310	CONCRETE MEDIAN SURFACE, 4 INCH (SPECIAL)	SQ FT	207
67100100	MOBILIZATION	L SUM	1
70101830	TRAFFIC CONTROL AND PROTECTION, STANDARD BLR 21	L SUM	1
70300220	TEMPORARY PAVEMENT MARKING - LINE 4"	FOOT	255
72000100	SIGN PANEL - TYPE 1	SQ FT	135
72000200	SIGN PANEL - TYPE 2	SQ FT	44
72900100	METAL POST - TYPE A	FOOT	186
72900200	METAL POST - TYPE B	FOOT	124
78000100	THERMOPLASTIC PAVEMENT MARKING - LETTERS AND SYMBOLS	SQ FT	45
78000200	THERMOPLASTIC PAVEMENT MARKING - LINE 4"	FOOT	091
78000500	THERMOPLASTIC PAVEMENT MARKING - LINE 8"	FOOT	54
78000600	THERMOPLASTIC PAVEMENT MARKING - LINE 12"	FOOT	138
78000650	THERMOPLASTIC PAVEMENT MARKING - LINE 24"	FOOT	210
78200300	PRISMATIC CURB REFLECTOR	EACH	51
81013000	CONDUIT IN TRENCH, 4" DIA., PVC	FOOT	320
LR420029	PORTLAND CEMENT CONCRETE PAVEMENT 8" (SPECIAL)	SQ YD	372
X0325680	HOT-MIX ASPHALT SIDEWALK	SQ FT	3897
X4404700	SIDEWALK REMOVAL (SPECIAL)	SQ FT	4660
X6020074	INLETS, TYPE A, TYPE 3V FRAME AND GRATE	EACH	1
X6020075	INLETS, TYPE B, TYPE 3V FRAME AND GRATE	EACH	6
X7800200	PAINT PAVEMENT MARKING CURB	FOOT	305
Z0013798	CONSTRUCTION LAYOUT	L SUM	1
Z0042500	POST, SPECIAL	EACH	12
Z0056608	STORM SEWER (WATER MAIN REQUIREMENTS) 12 INCH	FOOT	18

LAST SAVED: 12/28/2018 10:44:15 AM
 PLOT TABLE: 18-11417.dwg
 PLOT DATE: 12/28/2018 10:44:15 AM

FILE NAME: \\10812930\cadd\plans\02_DBR\1111-EN-100.dwg	USER NAME: r.rossman	DESIGNED: -	REVISED: 12/20/10
		DRAWN: -	REVISED: -
		CHECKED: -	REVISED: -
		DATE: -	REVISED: -



SUMMARY OF QUANTITIES			
SCALE: NTS	SHEET NO. 1 OF 1 SHEETS	STA.	TO STA.

F.A.U. 9170		10/1	10/2
PORTER / SIMMONS ROADS		36	3
SECTION 08-00060-00-PV			
CONTRACT 97408			

STORM SEWER											
STATION	STRUCTURE NUMBER	STRUCTURE NUMBER	SIDE	TRENCH BACKFILL	PIPE CULVERTS, CLASS D, TYPE 15"	PIPE CULVERTS, CLASS D, TYPE 18"	STORM SEWERS, TYPE 1 (WATER MAIN REQUIREMENTS) 12"	STORM SEWERS, CLASS A, TYPE 12"	STORM SEWERS, CLASS A, TYPE 15"	STORM SEWERS, CLASS A, TYPE 18"	
				CU YD	FOOT	FOOT	FOOT	FOOT	FOOT	FOOT	
17+57.56 TO 17+71.81	4-2/1	4-1/1	RT		12						
17+57.83 TO 17+71.81	5/1	4/1	LT		12						
17+71.81 TO 17+71.81	4-1/1	4/1	RT/LT	2.4					30		
17+71.81 TO 18+98.42	4/1	3/1	LT	10.0					126		
18+98.42 TO 19+00.24	3/1	3-1/1	LT/RT	3.5							
19+00.24 TO 19+82.30	3-1/1	3-2/1	RT	4.5			9	82			
19+82.30 TO 19+92.11	3-2/1	3-3/1	RT	0.1			9				
18+98.42 TO 50+82.41	3/1	2/1	LT							55	
50+82.41 TO 50+85.25	2/1	2-1/1	LT/RT	1.8				50			
50+85.25 TO 52+35.24	2/1	1/1	LT							145	
52+35.24 TO 52+44.66	1/1	0/1	LT								
UNROUNDED TOTALS:				22.3							
TOTALS:				23	24	7	18	174	156	240	

CONDUIT		
STATION	SIDE	CONDUIT IN TRENCH, 4" DIA, PVC
		FOOT
19+30.00 TO 19+80.00	CENTER	50
19+20.00	LEFT/RIGHT	60
19+65.06 TO 19+92.22	RIGHT	50
20+20.00 TO 20+70.00	CENTER	50
20+80.00	LEFT/RIGHT	60
50+20.00 TO 50+70.00	CENTER	50
TOTALS:		320

UTILITY ADJUSTMENTS (PERFORMED BY THE CITY OF O'FALLON)			
STATION	OFFSET	FIRE HYDRANTS TO BE ADJUSTED	ADJUSTING WATER VALVES 12"
		EACH	EACH
19+06.19	61.8 RT	1	
20+48.02	68.8 RT		1
20+52.66	61.5 RT	1	
20+58.07	66.6 RT		1
TOTALS:		1	1

STORM SEWER STRUCTURE									
STATION	STRUCTURE NUMBER	OFFSET	SIDE	METAL END SECTIONS 15"	METAL END SECTIONS 18"	INLETS, TYPE A, TYPE 3 FRAME AND GRATE	INLETS, TYPE B, WITH SPECIAL FRAME AND GRATE	INLETS, TYPE A, TYPE 3V FRAME AND GRATE	INLETS, TYPE B, TYPE 3V FRAME AND GRATE
				EACH	EACH	EACH	EACH	EACH	EACH
17+57.56	4-2/1	19.88	RT	1					
17+57.83	5/1	20.63	LT	1					
17+71.80	4/1	15.20	LT						1
17+71.80	4-1/1	15.20	RT						1
18+98.42	3/1	22.81	LT						1
19+00.24	3-1/1	20.30	RT						1
19+82.30	3-2/1	62.03	RT						1
19-92.11	3-3/1	64.02	RT			1			1
50+82.41	2/1	23.45	LT					1	
50+85.25	2-1/1	27.45	RT					1	
52-35.24	1/1	18.59	LT				1		
52+44.66	3/1	21.95	LT		1				
TOTALS:				2	1	1	1	1	6

PIPE CULVERT AND INLET REMOVAL						
STATION	OFFSET	OFFSET	DESCRIPTION	PIPE CULVERT REMOVAL	REMOVING INLETS	
				FOOT	FOOT	
18+33.16 TO 18+43.50	19.55 LT	16.74 RT	15" CMP	40		
19+15.30 TO 51+14.84	21.54 LT	16.94 LT	15" PVC	141		
19+73.87	32.67 LT				1	
TOTALS:				181	1	

LAST SAVE: 12/28/2010
 PEN TABLE: 18-10-10-10
 PLOT DRIVER: 18-10-10-10

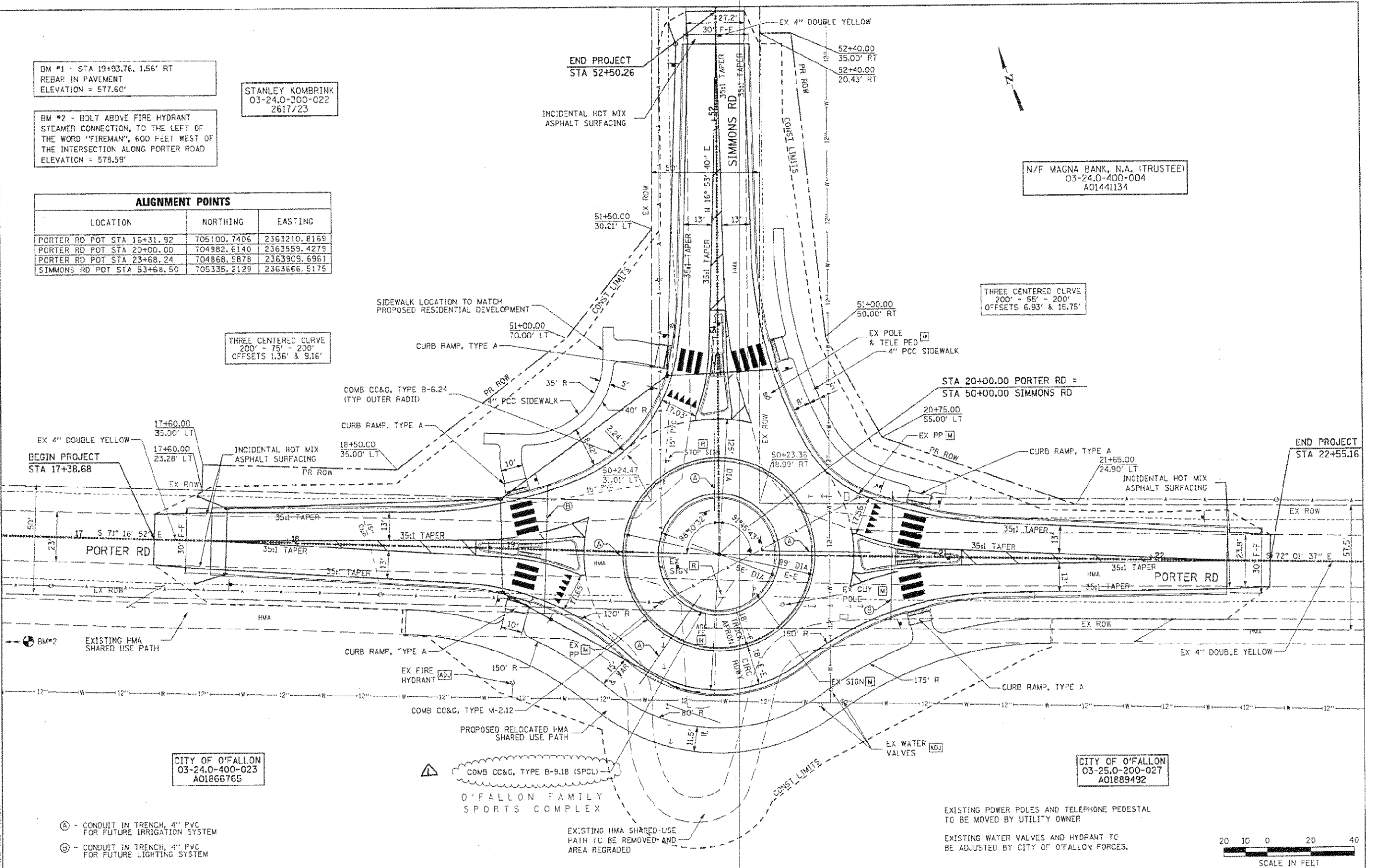
DM #1 - STA 19+93.76, 1.56' RT
REBAR IN PAVEMENT
ELEVATION = 577.60'

STANLEY KOMBRINK
03-24.0-300-022
2617/23

BM #2 - BOLT ABOVE FIRE HYDRANT
STEAMER CONNECTION, TO THE LEFT OF
THE WORD "FIREMAN", 600 FEET WEST OF
THE INTERSECTION ALONG PORTER ROAD
ELEVATION = 578.59'

N/F MAGNA BANK, N.A. (TRUSTEE)
03-24.0-400-004
A01441134

ALIGNMENT POINTS		
LOCATION	NORTHING	EASTING
PORTER RD POT STA 16+31.92	705100.7406	2363210.8169
PORTER RD POT STA 20+00.00	704982.6140	2363559.4279
PORTER RD POT STA 23+68.24	704868.9878	2363909.6961
SIMMONS RD POT STA 53+68.50	705335.2129	2363666.5175



CITY OF O'FALLON
03-24.0-400-023
A01866765

CITY OF O'FALLON
03-25.0-200-027
A01889492

- Ⓐ - CONDUIT IN TRENCH, 4" PVC FOR FUTURE IRRIGATION SYSTEM
- Ⓑ - CONDUIT IN TRENCH, 4" PVC FOR FUTURE LIGHTING SYSTEM

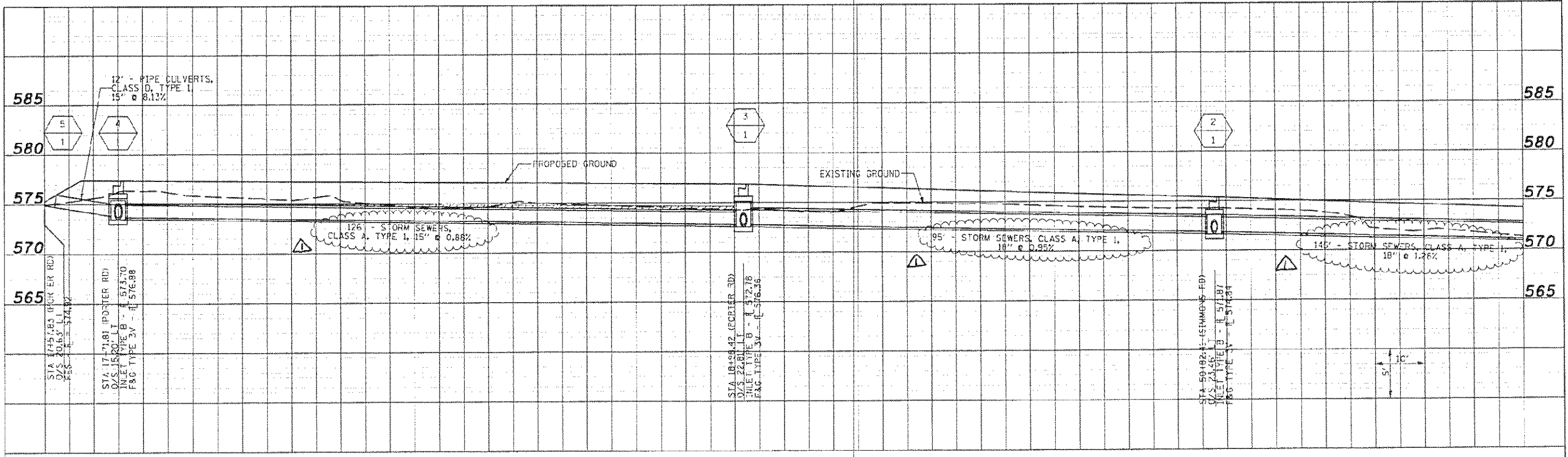
EXISTING POWER POLES AND TELEPHONE PEDESTAL TO BE MOVED BY UTILITY OWNER
EXISTING WATER VALVES AND HYDRANT TO BE ADJUSTED BY CITY OF O'FALLON FORCES.



LAST SAVED = 12/20/2010 11:18:11 AM
 PLOT DATE = 12/20/2010 11:18:11 AM
 PLOT SCALE = 1/4" = 10'-0"

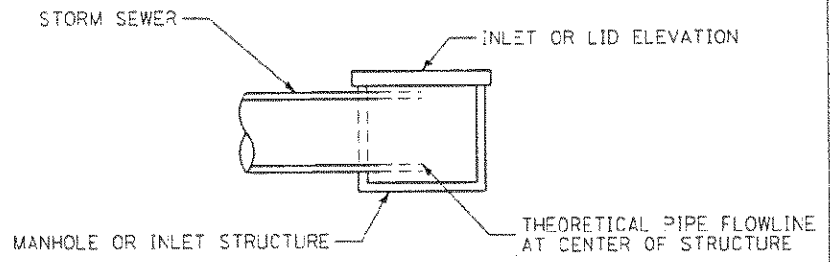
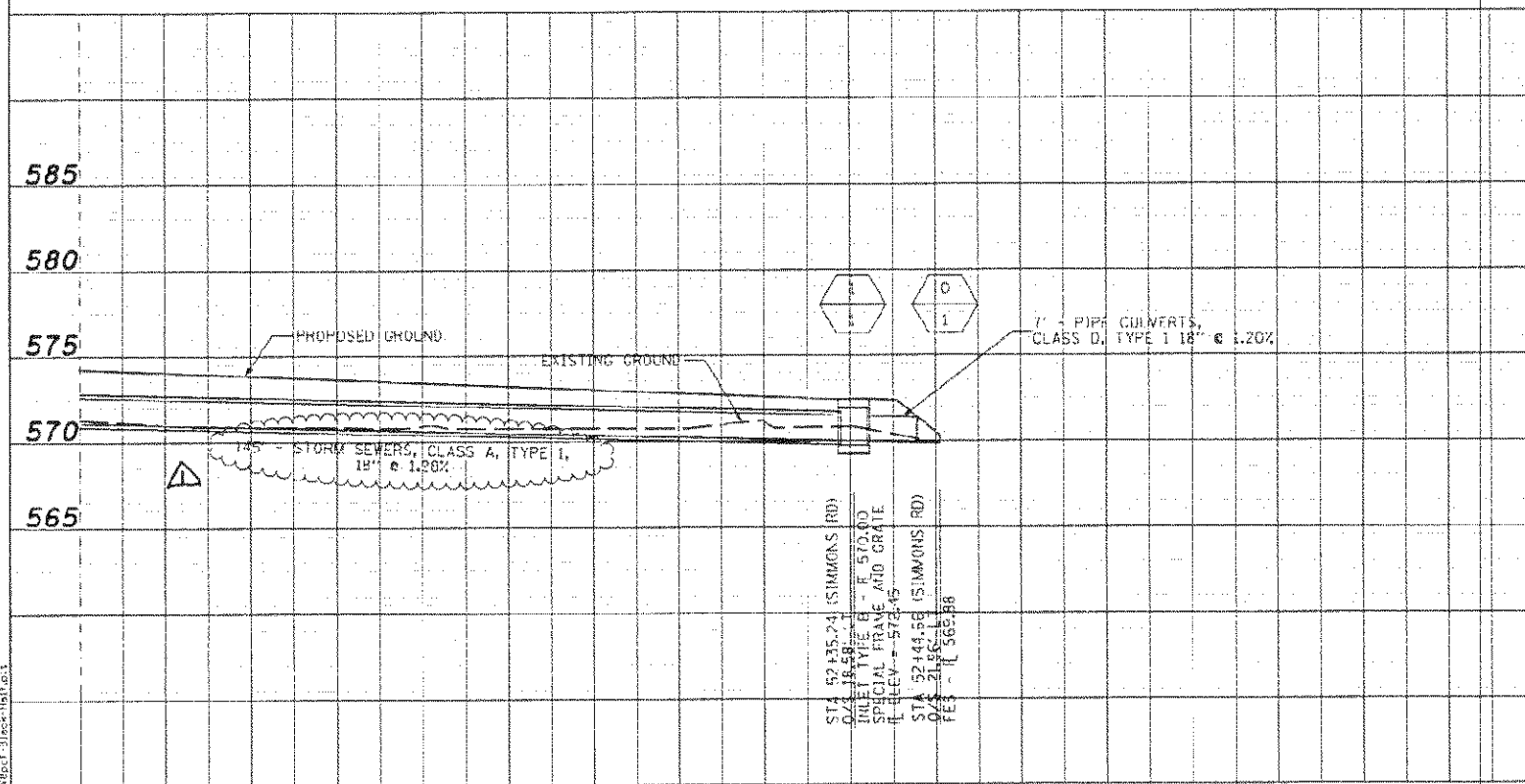
FILE NAME: \\server\projects\03-24.0-400-023\DWG\03-24.0-400-023.dwg	USER NAME: wshirsh	DESIGNED -	REVISED - 12/20/10			PLAN SCALE: 1/4" = 10'-0" SHEET NO. 1 OF 1 SHEETS STA. TO STA.	F.A.U. 9170 PORTER / SIMMONS ROADS SECTION 08-C060-00-PV CONTRACT 97408
PLOT SCALE = 1/4" = 10'-0"	PLOT DATE = 12/20/2010 11:18:11 AM	DRAWN -	REVISED -				TOTAL SHEETS 36 SHEET NO. 10
		CHECKED -	REVISED -				
		DATE -	REVISED -				

DATE	
BY	
PLANNED	
NOTED	
CHECKED	
DATE	
BY	
PLANNED	
NOTED	
CHECKED	
DATE	
BY	



TRENCH BACKFILL

DATE	
BY	
PLANNED	
NOTED	
CHECKED	
DATE	
BY	
PLANNED	
NOTED	
CHECKED	
DATE	
BY	



NOTE:
CONTRACTOR TO TAKE CARE TO ACCOUNT FOR PIPE THICKNESS WHEN CONSTRUCTING BOTTOM OF MANHOLE / INLET.

INLET STRUCTURE DETAIL

INLET FLOW LINES SHOWN ON PLANS ARE THE THEORETICAL INTERSECTION POINT BETWEEN FLOW LINES OF THE INCOMING PIPES. CARE SHOULD BE TAKEN TO INSURE THAT THE STRUCTURE IS INSTALLED/CONSTRUCTED CORRECTLY TO ALLOW FOR PIPE THICKNESS.

INLET OFFSET IS MEASURED TO THE FLOWLINE OF THE GUTTER

LAST DATE: 12/20/2010
 PLOT SCALE: 1/8" = 1'-0"
 PLOT DRIVER: 12/20/2010 10:44:58 AM

FILE NAME: \\188612962\cash\plans\13_08XXXX-Dr-Dwg-22.dwg	USER NAME: adonahue
PILOT SCALE: 1/8" = 1'-0"	DESIGNED: -
PLOT DATE: 12/20/2010 10:44:58 AM	CHECKED: -
	DRAWN: -
	REVISOR: -
	REVISION: -

DESIGNED: -	REVISION: 12/20/10
CHECKED: -	REVISION: -
DRAWN: -	REVISION: -
REVISOR: -	REVISION: -
REVISION: -	REVISION: -

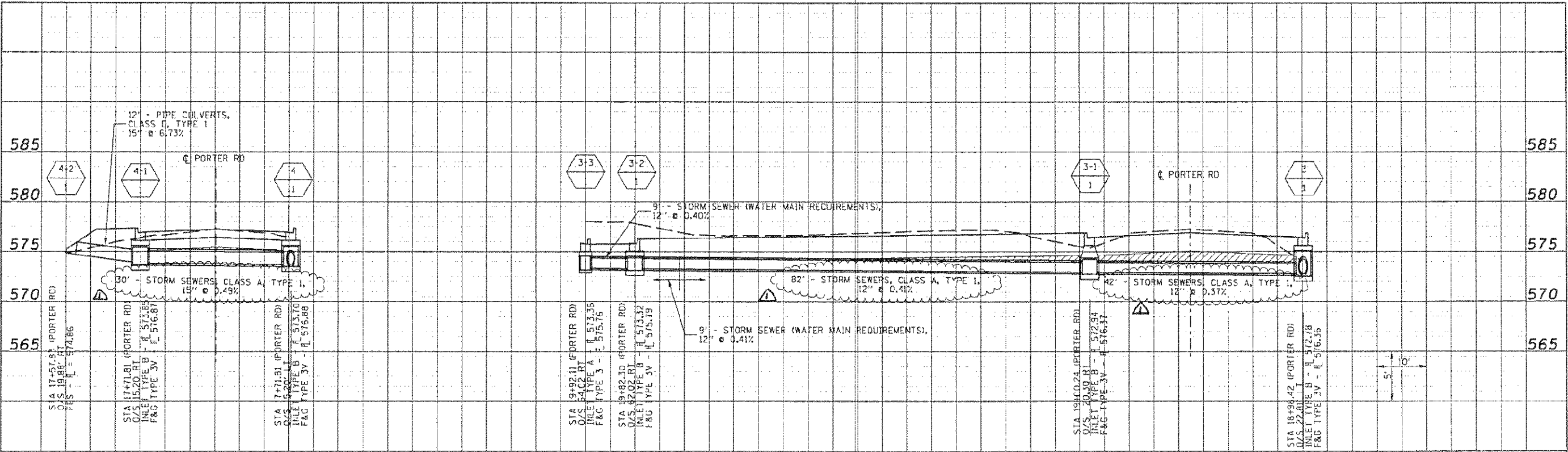
HORNER & SHIFRIN, INC.
 ENGINEERS
 www.HornerShifrin.com

OFallon
 ENGINEERS

DRAINAGE PROFILE	
MAINLINE STORM SEWER PROFILES	
SCALE:	TO STA.
SHEET NO. 1 OF 2 SHEETS	

F.A.U. 9170	
PORTER / SIMMONS ROADS	
SECTION 08-00260-00-PV	
CONTRACT 97408	
TOTAL SHEETS: 36	SHEET NO.: 17

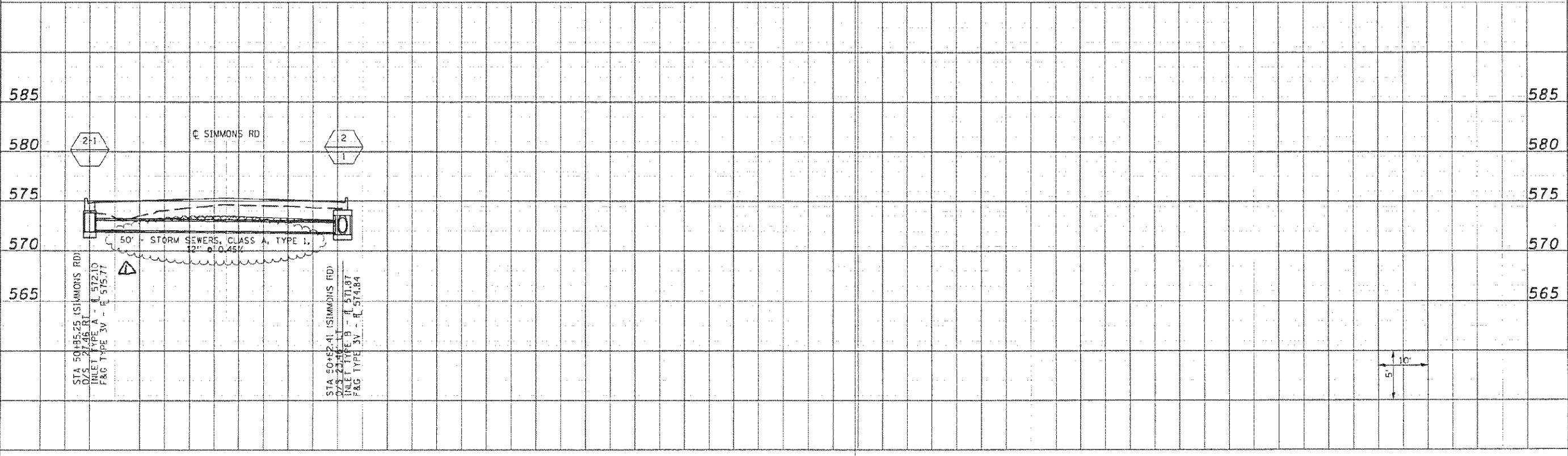
DATE	
BY	
PL. AM	
WORKED	
IN CHARGE	
DATE	
BY	
DATE	
BY	



TRENCH BACKFILL

INLET FLOW LINES SHOWN ON PLANS ARE THE THEORETICAL INTERSECTION POINT BETWEEN FLOW LINES OF THE INCOMING PIPES. CARE SHOULD BE TAKEN TO INSURE THAT THE STRUCTURE IS INSTALLED/CONSTRUCTED CORRECTLY TO ALLOW FOR PIPE THICKNESS.

DATE	
BY	
PROFILE	
CHECKED	
DATE	
BY	
DATE	
BY	



LAST SAID = 12/28/2018
 PEN TABLE = 18-1681.cbr
 PLOT DATE = 12/28/2018 10:44:55 AM

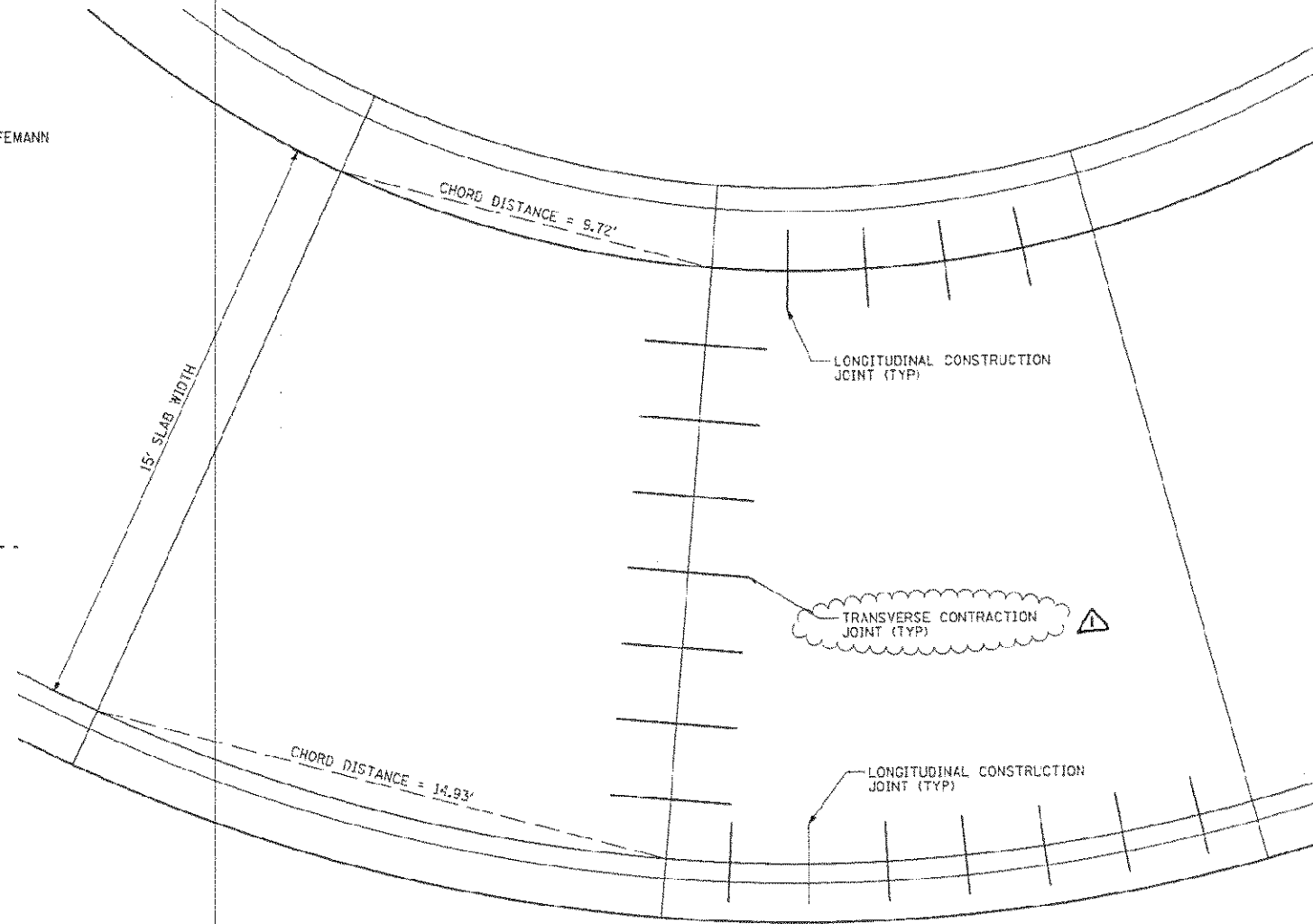
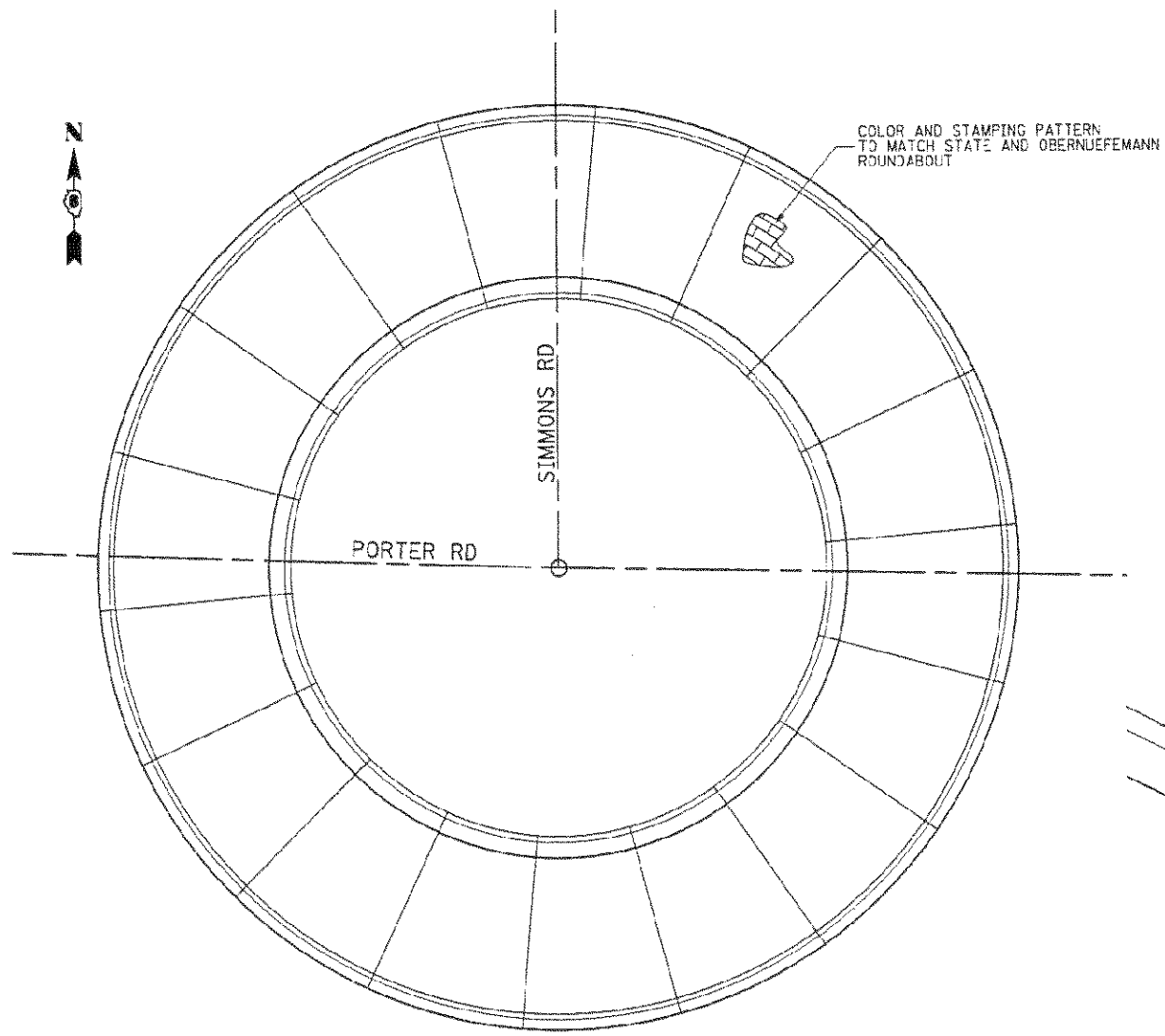
FILE NAME = \\19202\p00\cadd\1\plans\12.D00\KMS-Sub-Drain-82.dgn	USER NAME = xdonohue	DESIGNED =	REvised = 12/20/10
		CHECKED =	REvised =
PLT SCALE = 20x22pt = 1/4"		DRAWN =	REvised =
PLT DATE = 12/28/2018 10:44:55 AM		CHECKED =	REvised =

HORNER & SHIFRIN, INC.
 ENGINEERS
 www.Horner-Shifrin.com



DRAINAGE PROFILE	
SUB-SYSTEM STORM SEWER PROFILES	
SCALE:	SHEET NO. 2 OF 2 SHEETS STA. TO STA.

F.A.U. 9170		TOTAL SHEETS	SHEET NO.
PORTER / SIMMONS ROADS		36	18
SECTION 08-00060-00-PV			
CONTRACT 97408			



JOINT CONSTRUCTION WILL NOT BE PAID FOR SEPARATELY, BUT IS INCLUDED IN THE COST OF THE PAVEMENT OR CURB AND GUTTER BEING CONSTRUCTED. SEE STANDARD 420001 FOR JOINT DETAILS.

LAST SAVED: 12/20/2010 10:45:24 AM
 FILE NAME: I:\Projects\10-00060\10-00060-03-PV\10-00060-03-PV.dwg
 PLOT DATE: 12/20/2010 10:45:24 AM

FILE NAME: I:\Projects\10-00060\10-00060-03-PV\10-00060-03-PV.dwg	USER NAME: aaron	DESIGNED: -	REVISED: 12/20/10
PROJECT: 10-00060	DATE: 12/20/10	DRAWN: -	REVISED: -
PLOT SCALE: 1/8" = 1'-0"	CHECKED: -	DATE: -	REVISED: -
PLOT DATE: 12/20/2010 10:45:24 AM	DATE: -	REVISED: -	

HORNER & SHIRIN, INC
 ENGINEERS
 www.HornerShirin.com

Fallon
 ILLINOIS

INTERSECTION DETAILS
 TRUCK APRON SLAB DETAILS

SCALE: NONE | SHEET NO. 3 OF 3 SHEETS | STA. TO STA.

F.A.U. 9170
 PORTER / SIMMONS ROADS
 SECTION 08-00060-03-PV
 CONTRACT 97408

TOTAL SHEETS: 36 | SHEET NO.: 21