

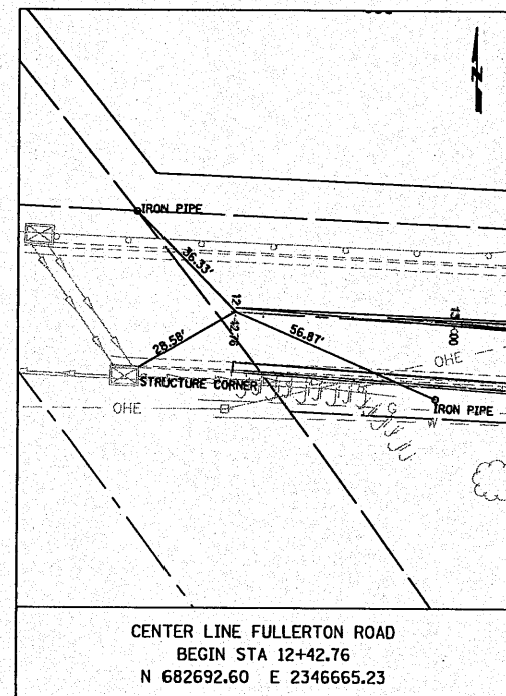
FBI ROUTE	SECTION	COUNTY
9257	06-00011-02-RP	ST. CLAIR
CONTRACT NO. 97448		ILLINOIS

**THOUVENOT, WADE & MOERCHEN, INC.**  
ENGINEERS ♦ SURVEYORS ♦ PLANNERS

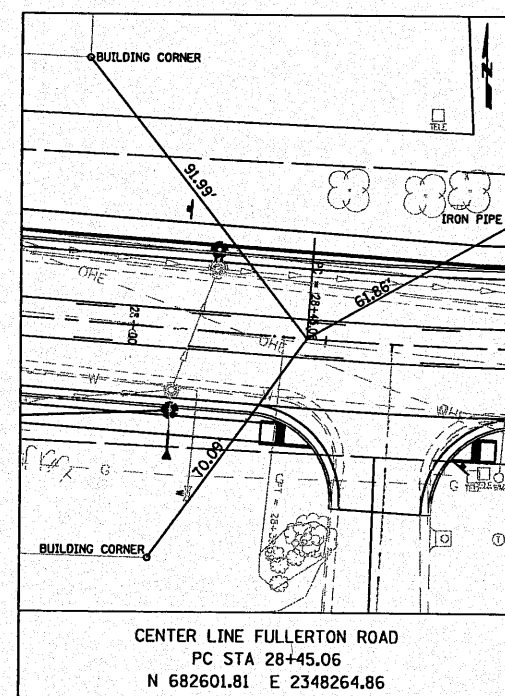


- CORPORATE OFFICE**  
4940 OLD COLLINSVILLE RD.  
SWANSEA, ILLINOIS 62226  
TEL (618) 624-4488  
FAX (618) 624-6688  
info@twm-inc.com
- CARBONDALE OFFICE**  
206 WEST COLLEGE STREET  
CARBONDALE, ILLINOIS 62901  
TEL (618) 549-8844  
FAX (618) 549-8450  
info@twm-inc.com
- EDWARDSVILLE OFFICE**  
10158 CENTURY DRIVE  
EDWARDSVILLE, ILLINOIS 62025  
TEL (618) 656-4040  
FAX (618) 656-4343  
info@twm-inc.com
- ST. CHARLES OFFICE**  
400 NORTH 5TH ST., SUITE 101  
ST. CHARLES, MISSOURI 63301  
TEL (636) 724-8300  
FAX (636) 724-8304  
info@twm-inc.com
- WATERLOO OFFICE**  
113 SOUTH MAIN STREET  
WATERLOO, ILLINOIS 62298  
TEL (618) 939-5050  
FAX (618) 939-3938  
info@twm-inc.com

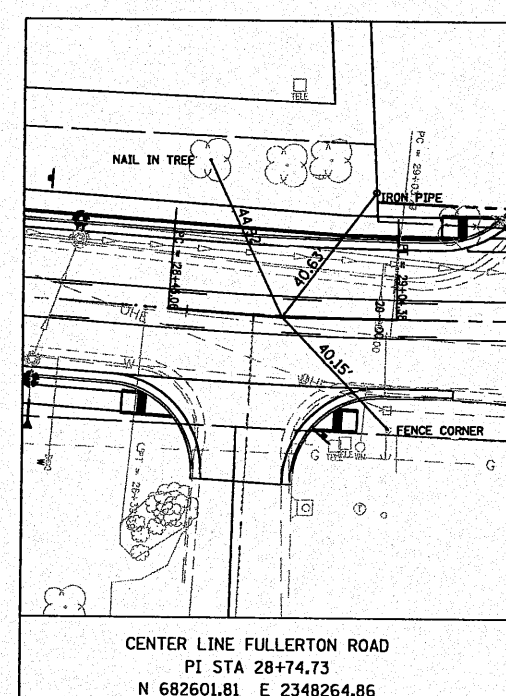
PROFESSIONAL REGISTRATIONS	LICENSE NO.
ILLINOIS PROFESSIONAL DESIGN FIRM	184-001200
PROFESSIONAL ENGINEERING CORP.	62-033370
PROFESSIONAL STRUCTURAL ENGR. CORP.	81-005202
ILLINOIS PROF. LAND SURVEYING CORP.	048-000029
MISSOURI PROFESSIONAL ENGR. CORP.	NC 001528
MISSOURI LAND SURVEYING CORP.	NC 000346



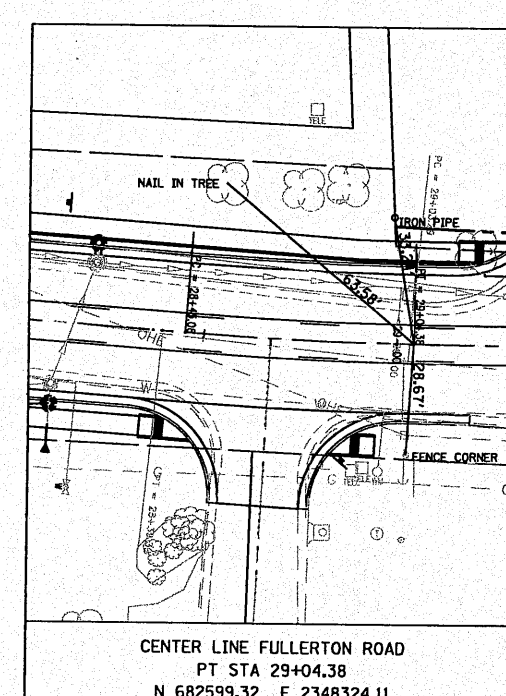
CENTER LINE FULLERTON ROAD  
BEGIN STA 12+42.76  
N 682692.60 E 2346665.23



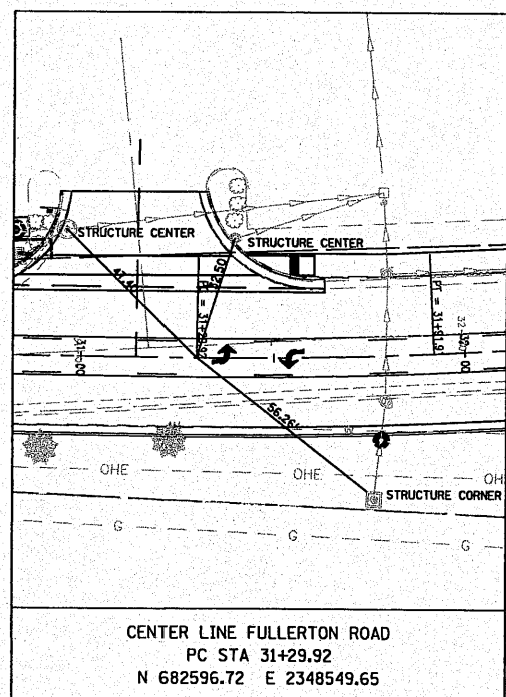
CENTER LINE FULLERTON ROAD  
PC STA 28+45.06  
N 682601.81 E 2348264.86



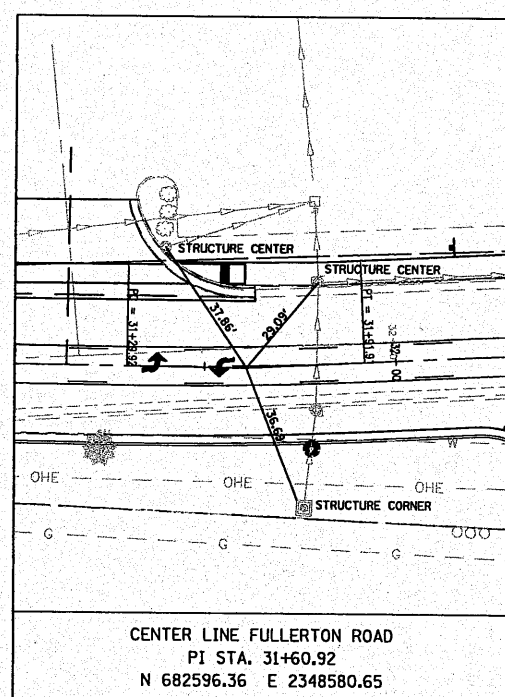
CENTER LINE FULLERTON ROAD  
PI STA 28+74.73  
N 682601.81 E 2348264.86



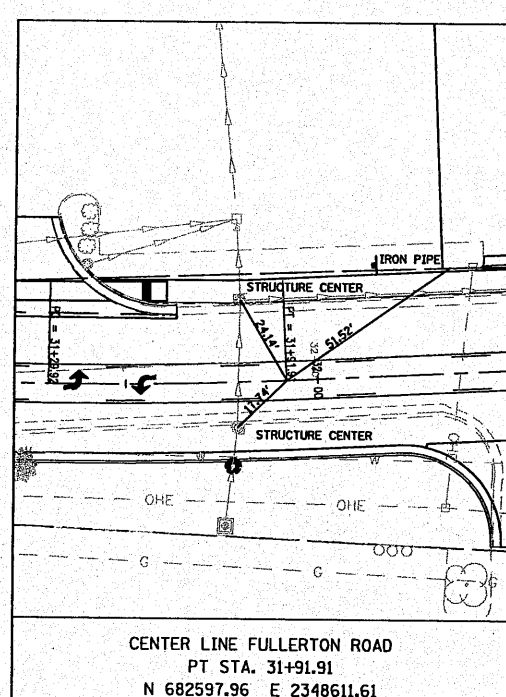
CENTER LINE FULLERTON ROAD  
PT STA 29+04.38  
N 682599.32 E 2348324.11



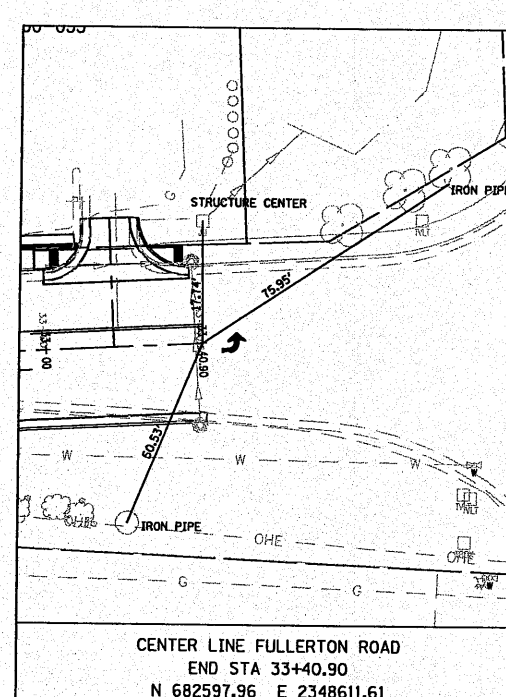
CENTER LINE FULLERTON ROAD  
PC STA 31+29.92  
N 682596.72 E 2348549.65



CENTER LINE FULLERTON ROAD  
PI STA 31+60.92  
N 682596.36 E 2348580.65



CENTER LINE FULLERTON ROAD  
PT STA 31+91.91  
N 682597.96 E 2348611.61



CENTER LINE FULLERTON ROAD  
END STA 33+40.90  
N 682597.96 E 2348611.61

**ALIGNMENT TIES AND BECHMARKS**  
FULLERTON ROAD WIDENING  
VILLAGE OF SWANSEA  
ST. CLAIR COUNTY, ILLINOIS

REV.	DATE	DESCRIPTION
△		
△		
△		

PLAN STATUS:  
**FINAL**

ISSUED FOR REVIEW     ISSUED FOR BIDDING  
 ISSUED FOR CONSTR.     RECORD DRAWING

DRAWN BY: JJV    SHEET  
DESIGNED BY: JJV    **13**  
CHECKED BY: SJK    OF 69 SHEETS  
APPROVED BY: JJV    PROJECT DESCRIPTION  
PROJECT NUMBER: T07050149