

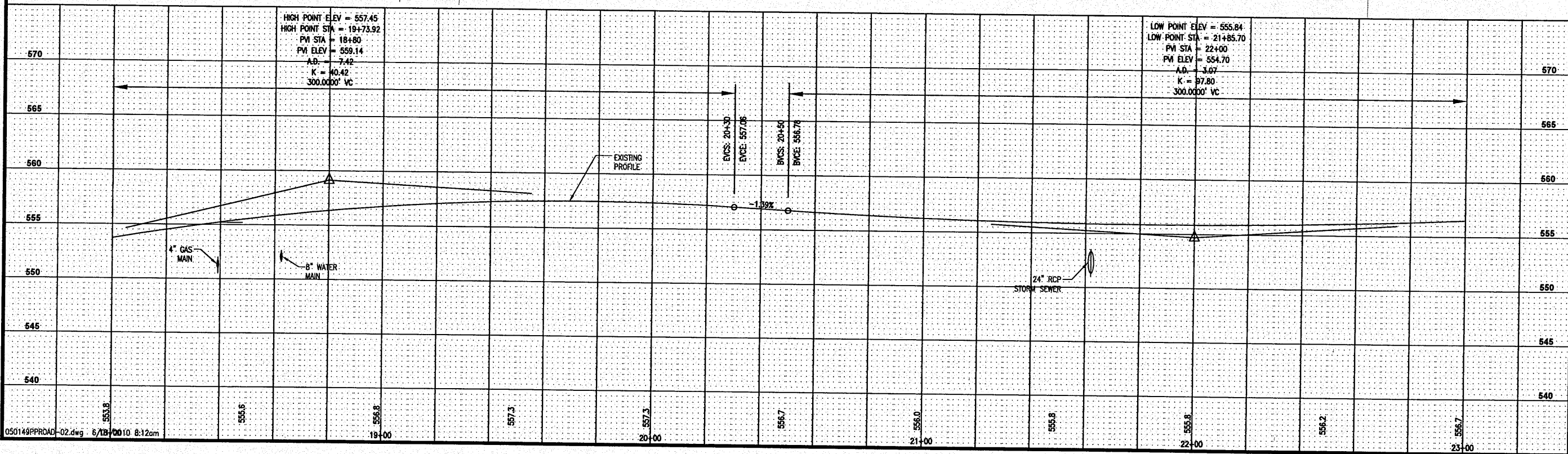
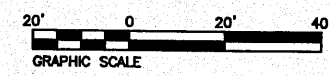
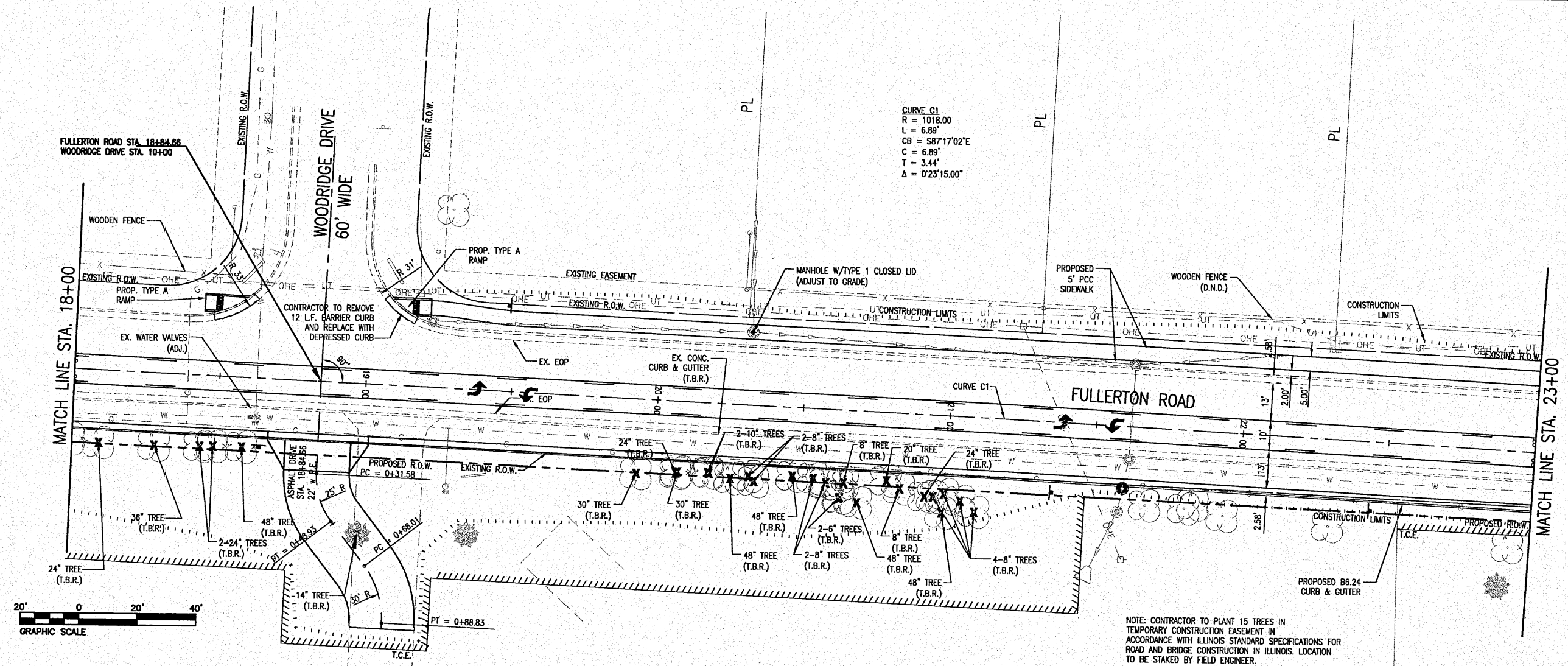
| | | |
|--------------------|----------------|-----------|
| FAU ROUTE | SECTION | COUNTY |
| 9257 | 06-00011-02-RP | ST. CLAIR |
| CONTRACT NO. 97448 | | ILLINOIS |

THOUVENOT, WADE & MOERCHEN, INC.
ENGINEERS SURVEYORS PLANNERS



- CORPORATE OFFICE**
4940 OLD COLLINSVILLE RD.
SWANSEA, ILLINOIS 62226
TEL (618) 624-4488
FAX (618) 624-6688
info@twm-inc.com
- CARBONDALE OFFICE**
206 WEST COLLEGE STREET
CARBONDALE, ILLINOIS 62901
TEL (618) 549-8844
FAX (618) 549-8450
info@twm-inc.com
- EDWARDSVILLE OFFICE**
1015B CENTURY DRIVE
EDWARDSVILLE, ILLINOIS 62025
TEL (618) 656-4040
FAX (618) 656-4343
info@twm-inc.com
- ST. CHARLES OFFICE**
400 NORTH 5TH ST., SUITE 101
ST. CHARLES, MISSOURI 63301
TEL (636) 724-8300
FAX (636) 724-8304
info@twm-inc.com
- WATERLOO OFFICE**
113 SOUTH MAIN STREET
WATERLOO, ILLINOIS 62298
TEL (618) 939-5050
FAX (618) 939-3938
info@twm-inc.com

| PROFESSIONAL REGISTRATIONS | LICENSE NO. |
|-------------------------------------|-------------|
| ILLINOIS PROFESSIONAL DESIGN FIRM | 184-001220 |
| PROFESSIONAL ENGINEERING CORP. | 62-035370 |
| PROFESSIONAL STRUCTURAL ENGR. CORP. | 81-005202 |
| ILLINOIS PROF. LAND SURVEYING CORP. | 048-000209 |
| MISSOURI PROFESSIONAL ENGR. CORP. | NC 001528 |
| MISSOURI LAND SURVEYING CORP. | NC 000346 |



TITLE
FULLERTON ROAD PLAN AND PROFILE
STA. 12+42.76 - STA. 18+00

PROJECT:
FULLERTON ROAD WIDENING
VILLAGE OF SWANSEA
ST. CLAIR COUNTY, ILLINOIS

| REV. | DATE | DESCRIPTION |
|------|------|-------------|
| | | |
| | | |
| | | |

PLAN STATUS:
FINAL

ISSUED FOR REVIEW ISSUED FOR BIDDING
 ISSUED FOR CONSTR. RECORD DRAWING

| | |
|------------------|---------------------------|
| DRAWN BY: JUV | SHEET: 15 |
| DESIGNED BY: JUV | OF 69 SHEETS |
| CHECKED BY: RSD | PROJECT DESCRIPTION |
| APPROVED BY: JUV | PROJECT NUMBER: T07050149 |

Z:\050149 Fullerton Road\050149PPROAD-02.dwg Plotted By: mblumbar 6/18/2010 8:12am