

FAU ROUTE	SECTION	COUNTY
9257	06-00011-02-RP	ST. CLAIR
CONTRACT NO. 97448		ILLINOIS

**THOUVENOT,  
WADE &  
MOERCHEN, INC.**  
ENGINEERS ♦ SURVEYORS ♦ PLANNERS



**CORPORATE OFFICE**  
4940 OLD COLLINSVILLE RD.  
SWANSEA, ILLINOIS 62226  
TEL (618) 624-4488  
FAX (618) 624-6688  
info@twm-inc.com

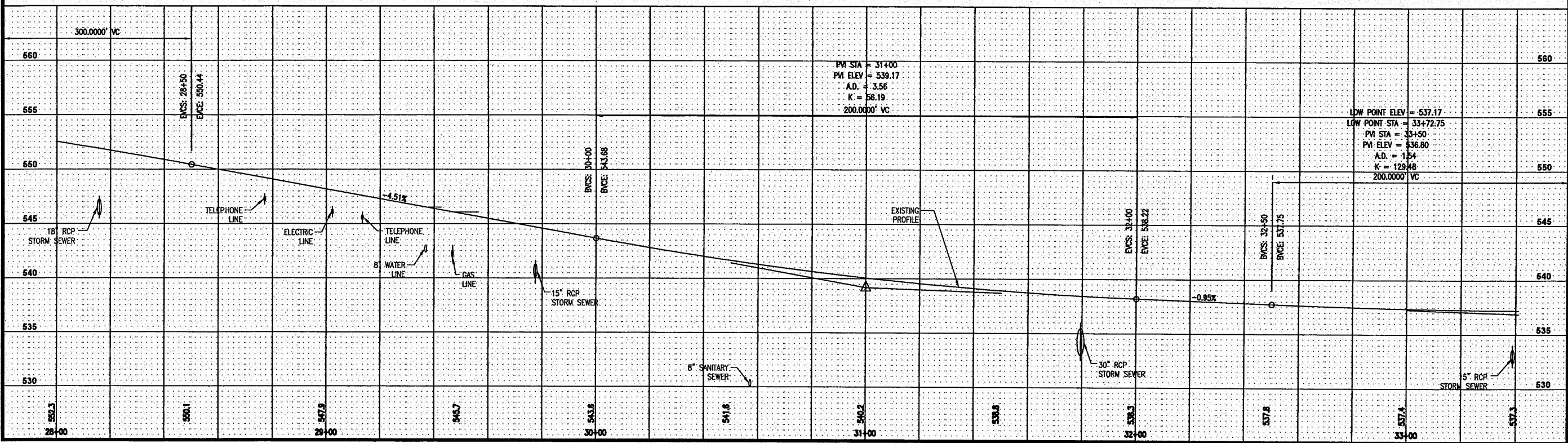
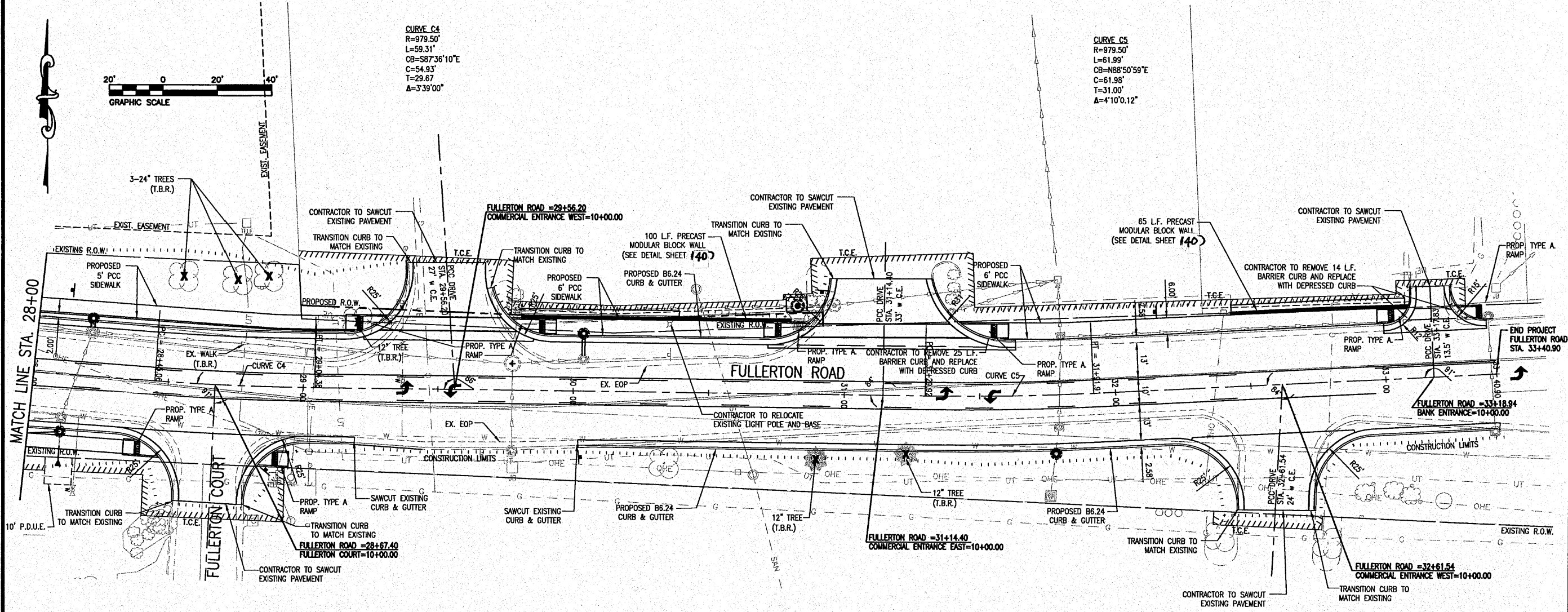
**CARBONDALE OFFICE**  
206 WEST COLLEGE STREET  
CARBONDALE, ILLINOIS 62901  
TEL (618) 549-8844  
FAX (618) 549-8450  
info@twm-inc.com

**EDWARDSVILLE OFFICE**  
10158 CENTURY DRIVE  
EDWARDSVILLE, ILLINOIS 62025  
TEL (618) 656-4040  
FAX (618) 656-4343  
info@twm-inc.com

**ST. CHARLES OFFICE**  
400 NORTH 5TH ST., SUITE 101  
ST. CHARLES, MISSOURI 63301  
TEL (636) 724-8300  
FAX (636) 724-8304  
info@twm-inc.com

**WATERLOO OFFICE**  
113 SOUTH MAIN STREET  
WATERLOO, ILLINOIS 62298  
TEL (618) 939-5050  
FAX (618) 939-3938  
info@twm-inc.com

PROFESSIONAL REGISTRATIONS	LICENSE NO.
ILLINOIS PROFESSIONAL DESIGN FIRM	184-001220
PROFESSIONAL ENGINEERING CORP.	02-033370
PROFESSIONAL STRUCTURAL ENGR. CORP.	01-005202
ILLINOIS PROF. LAND SURVEYING CORP.	048-000293
MISSOURI PROFESSIONAL ENGR. CORP.	NC 001528
MISSOURI LAND SURVEYING CORP.	NC 000346



**TITLE**  
FULLERTON ROAD PLAN AND PROFILE  
STA. 28+00 - STA. 33+40.90

**PROJECT**  
FULLERTON ROAD WIDENING  
VILLAGE OF SWANSEA  
ST. CLAIR COUNTY, ILLINOIS

REV.	DATE	DESCRIPTION

**PLAN STATUS**  
**FINAL**

ISSUED FOR REVIEW    ISSUED FOR BIDDING  
 ISSUED FOR CONSTR.    RECORD DRAWING

DRAWN BY: JUV   SHEET  
DESIGNED BY: JUV   **17**  
CHECKED BY: RSD   OF 69 SHEETS  
APPROVED BY: JUV   PROJECT DESCRIPTION  
PROJECT NUMBER: T07050149

Z:\050149 Fullerton Road\DWG\Construction Plans\050149R02D-04.dwg   Plotted By: mlsz@twm