

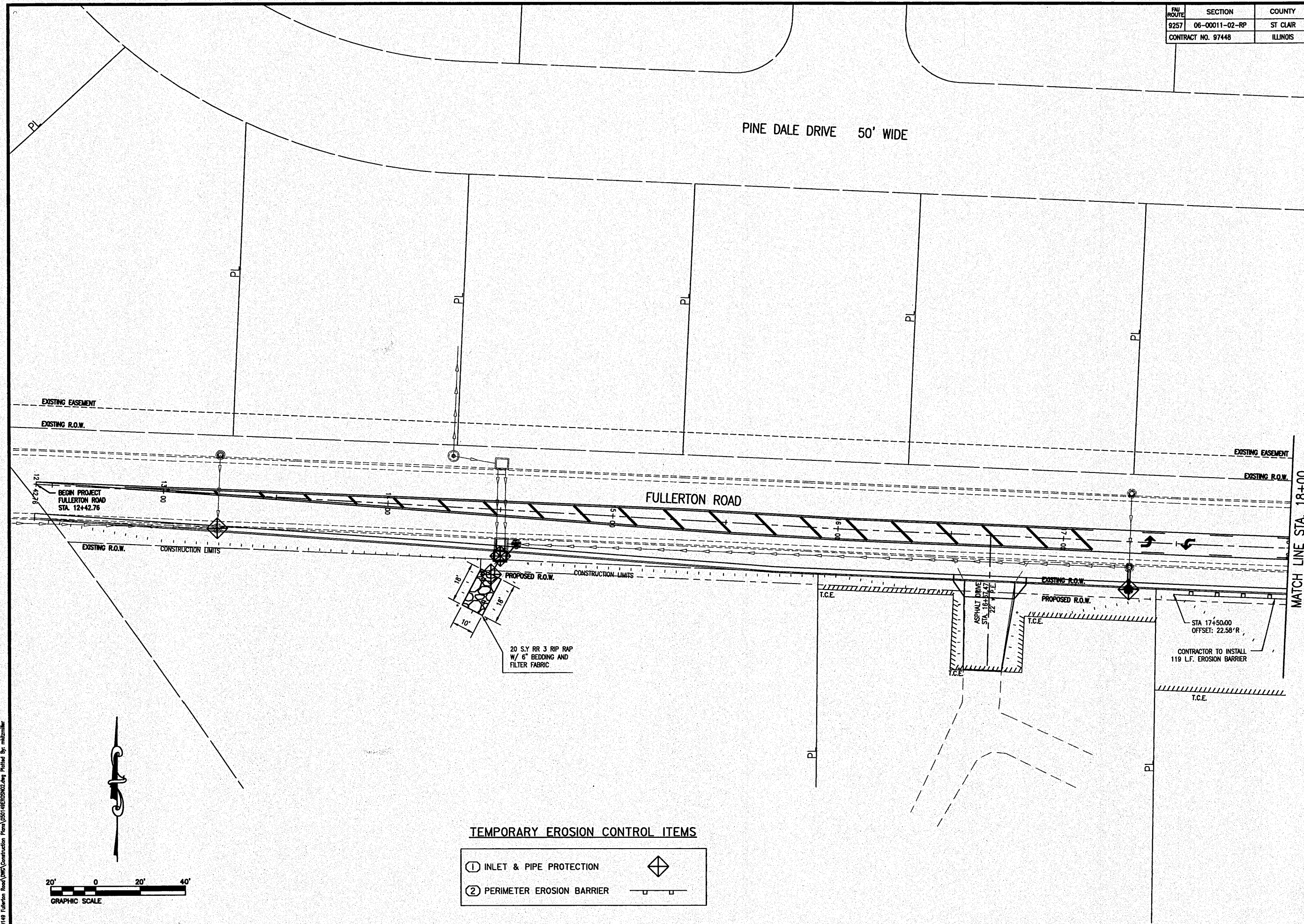
FNU ROUTE	SECTION	COUNTY
9257	06-00011-02-RP	ST CLAIR
CONTRACT NO. 97448		ILLINOIS

**THOUVENOT, WADE & MOERCHEN, INC.**  
ENGINEERS ♦ SURVEYORS ♦ PLANNERS



- CORPORATE OFFICE  
4940 OLD COLLINGSVILLE RD.  
SWANSEA, ILLINOIS 62226  
TEL (618) 624-4488  
FAX (618) 624-6688  
info@twm-inc.com
- CARBONDALE OFFICE  
208 WEST COLLEGE STREET  
CARBONDALE, ILLINOIS 62901  
TEL (618) 549-8844  
FAX (618) 549-8450  
info@twm-inc.com
- EDWARDSVILLE OFFICE  
10158 CENTURY DRIVE  
EDWARDSVILLE, ILLINOIS 62025  
TEL (618) 656-4040  
FAX (618) 656-4343  
info@twm-inc.com
- ST. CHARLES OFFICE  
400 NORTH 5TH ST., SUITE 101  
ST. CHARLES, MISSOURI 63301  
TEL (636) 724-8300  
FAX (636) 724-8304  
info@twm-inc.com
- WATERLOO OFFICE  
113 SOUTH MAIN STREET  
WATERLOO, ILLINOIS 62298  
TEL (618) 939-5050  
FAX (618) 939-3938  
info@twm-inc.com

PROFESSIONAL REGISTRATIONS	LICENSE NO.
ILLINOIS PROFESSIONAL DESIGN FIRM	184-001220
PROFESSIONAL ENGINEERING CORP.	62-033370
PROFESSIONAL STRUCTURAL ENGR. CORP.	81-005202
ILLINOIS PROF. LAND SURVEYING CORP.	048-000029
MISSOURI PROFESSIONAL ENGR. CORP.	NC 001528
MISSOURI LAND SURVEYING CORP.	NC 000346



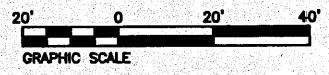
**EROSION CONTROL PLAN**  
FULLERTON ROAD WIDENING  
VILLAGE OF SWANSEA  
ST CLAIR CO., ILLINOIS

REV.	DATE	DESCRIPTION
▲		
▲		
▲		

PLAN STATUS:		<b>FINAL</b>
<input checked="" type="checkbox"/> ISSUED FOR REVIEW	<input type="checkbox"/> ISSUED FOR BIDDING	
<input type="checkbox"/> ISSUED FOR CONSTR.	<input type="checkbox"/> RECORD DRAWING	
DRAWN BY: JJV	DESIGNED BY: JJV	CHECKED BY: RSD
APPROVED BY: JJV	PROJECT DESCRIPTION	
PROJECT NUMBER: T07050149	SHEET 19 OF 69 SHEETS	

**TEMPORARY EROSION CONTROL ITEMS**

- ① INLET & PIPE PROTECTION
- ② PERIMETER EROSION BARRIER



Z:\050149 Fullerton Road\TWC\Construction Plans\050149EROSN02.dwg Plotted By: mlzmm