

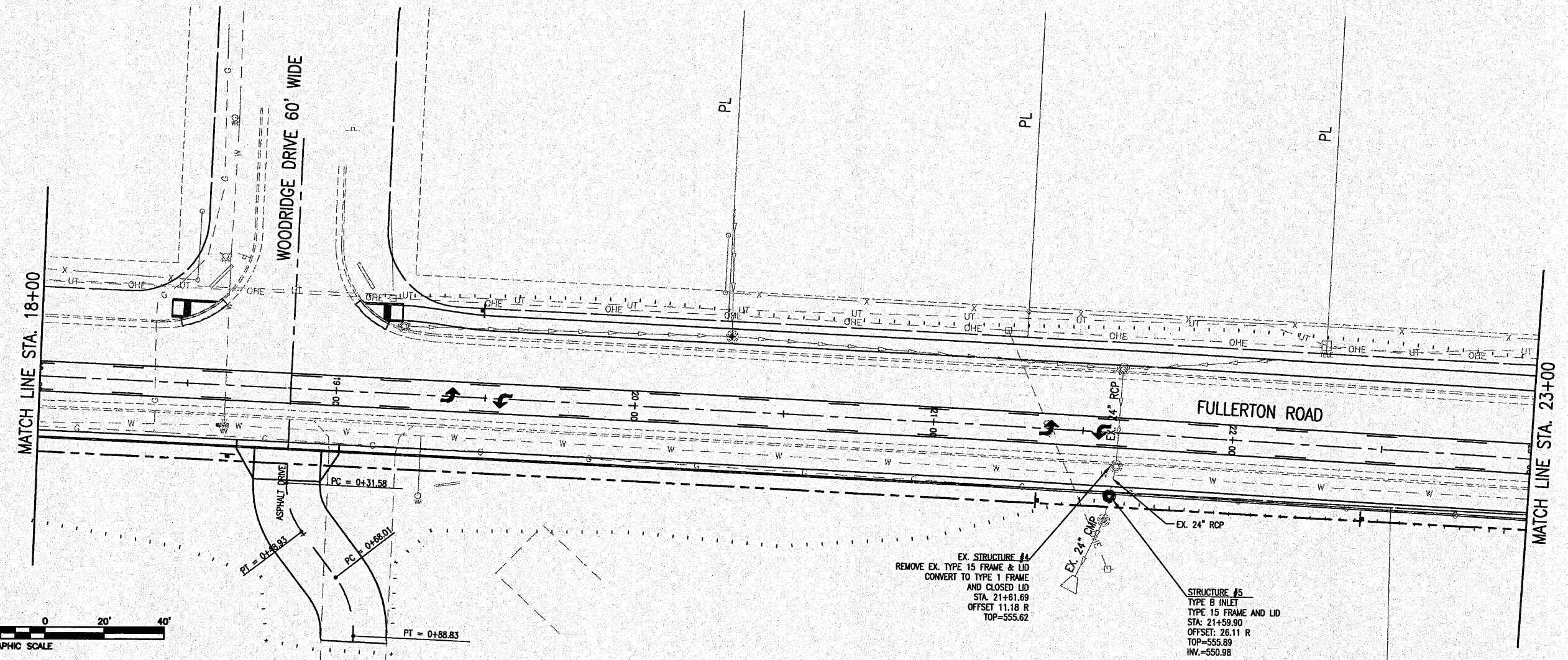
TRV ROUTE	SECTION	COUNTY
9257	06-00011-02-RP	ST. CLAIR
CONTRACT NO. 97448		ILLINOIS

**THOUVENOT, WADE & MOERCHEN, INC.**  
ENGINEERS ♦ SURVEYORS ♦ PLANNERS



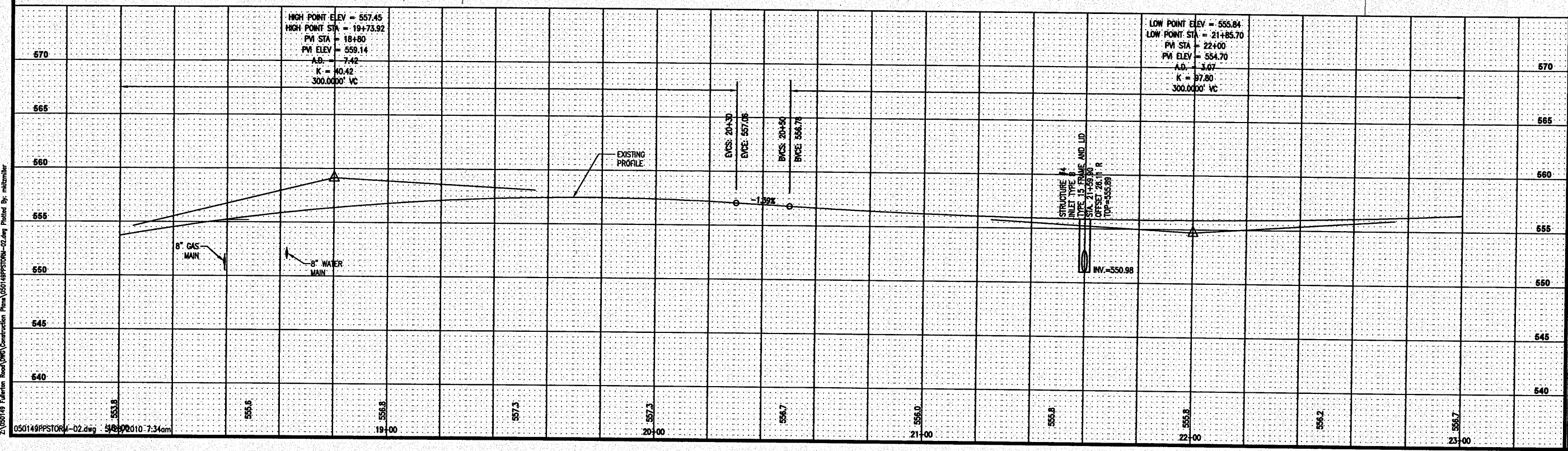
- CORPORATE OFFICE**  
4940 OLD COLLINGSVILLE RD.  
SWANSEA, ILLINOIS 62226  
TEL (618) 624-4488  
FAX (618) 624-6888  
info@twm-inc.com
- CARBONDALE OFFICE**  
206 WEST COLLEGE STREET  
CARBONDALE, ILLINOIS 62901  
TEL (618) 549-8844  
FAX (618) 549-8450  
info@twm-inc.com
- EDWARDSVILLE OFFICE**  
10158 CENTURY DRIVE  
EDWARDSVILLE, ILLINOIS 62025  
TEL (618) 656-4040  
FAX (618) 656-4343  
info@twm-inc.com
- ST. CHARLES OFFICE**  
400 NORTH 5TH ST., SUITE 101  
ST. CHARLES, MISSOURI 63301  
TEL (636) 724-8300  
FAX (636) 724-8304  
info@twm-inc.com
- WATERLOO OFFICE**  
113 SOUTH MAIN STREET  
WATERLOO, ILLINOIS 62298  
TEL (618) 939-5050  
FAX (618) 939-3938  
info@twm-inc.com

PROFESSIONAL REGISTRATIONS	LICENSE NO.
ILLINOIS PROFESSIONAL DESIGN FIRM	184-001220
PROFESSIONAL ENGINEERING CORP.	62-035370
PROFESSIONAL STRUCTURAL ENGR. CORP.	81-006202
ILLINOIS PROF. LAND SURVEYING CORP.	048-000029
MISSOURI PROFESSIONAL ENGR. CORP.	MC 001528
MISSOURI LAND SURVEYING CORP.	MC 000346



EX. STRUCTURE #4  
REMOVE EX. TYPE 15 FRAME & LID  
CONVERT TO TYPE 1 FRAME  
AND CLOSED LID  
STA. 21+61.69  
OFFSET 11.18 R  
TOP=555.62

STRUCTURE #5  
TYPE B INLET  
TYPE 15 FRAME AND LID  
STA. 21+59.90  
OFFSET: 26.11 R  
TOP=555.89  
INV.=550.98



**DRAINAGE PLAN AND PROFILE**  
STA. 18+00 - STA. 23+00

**FULLERTON ROAD WIDENING**  
VILLAGE OF SWANSEA  
ST. CLAIR COUNTY, ILLINOIS

REV.	DATE	DESCRIPTION
△		
△		
△		

PLAN STATUS: **FINAL**

ISSUED FOR REVIEW     ISSUED FOR BIDDING  
 ISSUED FOR CONSTR.     RECORD DRAWING

DRAWN BY: JJV    SHEET: **24**  
DESIGNED BY: JJV    OF 69 SHEETS  
CHECKED BY: RSD  
APPROVED BY: JJV    PROJECT DESCRIPTION  
PROJECT NUMBER: T07050149

Z:\050149\Fullerton Road\Drawn\Construction Plans\050149PST04-02.dwg    5/24/2010 7:34am