

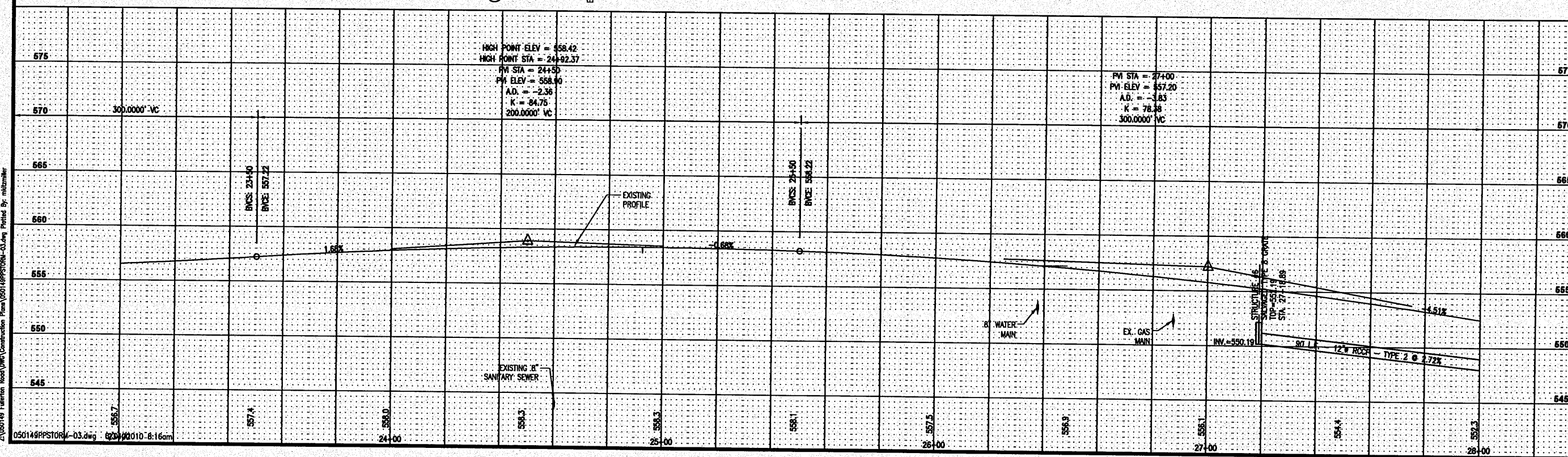
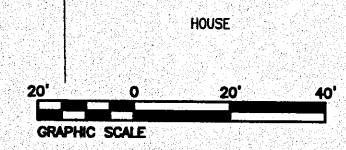
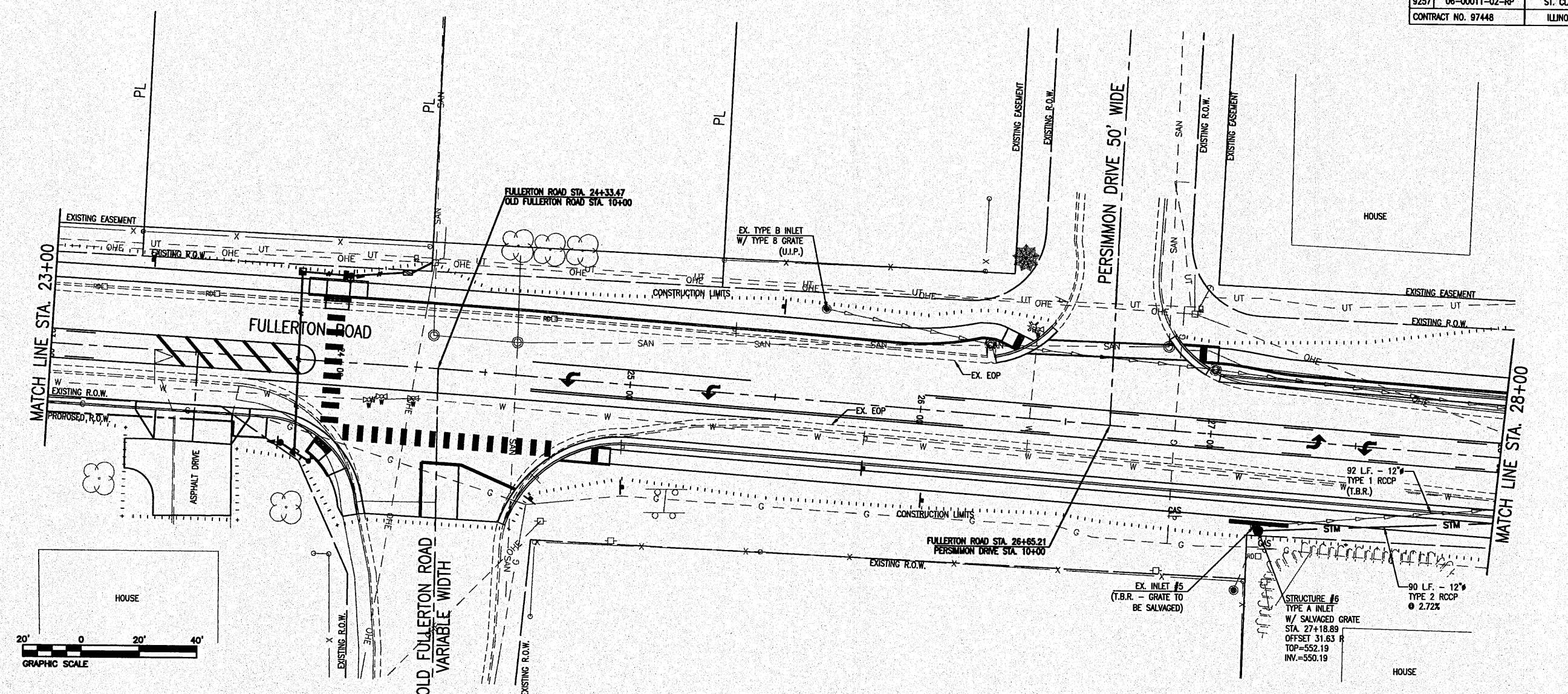
PLAN ROUTE	SECTION	COUNTY
9257	06-00011-02-RP	ST. CLAIR
CONTRACT NO. 97448		ILLINOIS

THOUVENOT, WADE & MOERCHEN, INC.
ENGINEERS ♦ SURVEYORS ♦ PLANNERS



- CORPORATE OFFICE**
4940 OLD COLLINSVILLE RD.
SWANSEA, ILLINOIS 62226
TEL (618) 624-4488
FAX (618) 624-6688
info@twm-inc.com
- CARBONDALE OFFICE**
206 WEST COLLEGE STREET
CARBONDALE, ILLINOIS 62901
TEL (618) 549-8844
FAX (618) 549-8450
info@twm-inc.com
- EDWARDSVILLE OFFICE**
10158 CENTURY DRIVE
EDWARDSVILLE, ILLINOIS 62025
TEL (618) 656-4040
FAX (618) 656-4343
info@twm-inc.com
- ST. CHARLES OFFICE**
400 NORTH 5TH ST., SUITE 101
ST. CHARLES, MISSOURI 63301
TEL (636) 724-8300
FAX (636) 724-8304
info@twm-inc.com
- WATERLOO OFFICE**
113 SOUTH MAIN STREET
WATERLOO, ILLINOIS 62298
TEL (618) 939-5050
FAX (618) 939-3938
info@twm-inc.com

PROFESSIONAL REGISTRATIONS	LICENSE NO.
ILLINOIS PROFESSIONAL DESIGN FIRM	104-001220
PROFESSIONAL ENGINEERING CORP.	62-035370
PROFESSIONAL STRUCTURAL ENGR. CORP.	81-000202
ILLINOIS PROF. LAND SURVEYING CORP.	048-000029
MISSOURI PROFESSIONAL ENGR. CORP.	NC 001528
MISSOURI LAND SURVEYING CORP.	NC 000346



DRAINAGE PLAN AND PROFILE
STA. 23+00 - STA. 28+00

FULLERTON ROAD WIDENING
VILLAGE OF SWANSEA
ST. CLAIR COUNTY, ILLINOIS

REV.	DATE	DESCRIPTION
△		
△		
△		

PLAN STATUS: **FINAL**

ISSUED FOR REVIEW ISSUED FOR BIDDING

ISSUED FOR CONSTR. RECORDED DRAWINGS

DRAWN BY: JJV	SHEET
DESIGNED BY: JJV	25
CHECKED BY: RSD	OF 69 SHEETS
APPROVED BY: JJV	PROJECT DESCRIPTION
PROJECT NUMBER: T07050149	

2:\050149\Fullerton Road\Construction Plans\050149PPST09-03.dwg Plotted By: mlzmm