

|                    |                |           |
|--------------------|----------------|-----------|
| FNU ROUTE          | SECTION        | COUNTY    |
| 9257               | 06-00011-02-RP | ST. CLAIR |
| CONTRACT NO. 97448 |                | ILLINOIS  |

**THOUVENOT, WADE & MOERCHEN, INC.**  
ENGINEERS ♦ SURVEYORS ♦ PLANNERS



- CORPORATE OFFICE  
4940 OLD COLLINSVILLE RD.  
SWANSEA, ILLINOIS 62228  
TEL (618) 624-4488  
FAX (618) 624-6688  
info@twm-inc.com
- CARBONDALE OFFICE  
206 WEST COLLEGE STREET  
CARBONDALE, ILLINOIS 62901  
TEL (618) 549-8844  
FAX (618) 549-8450  
info@twm-inc.com
- EDWARDSVILLE OFFICE  
1015B CENTURY DRIVE  
EDWARDSVILLE, ILLINOIS 62025  
TEL (618) 656-4040  
FAX (618) 656-4343  
info@twm-inc.com
- ST. CHARLES OFFICE  
400 NORTH 5TH ST., SUITE 101  
ST. CHARLES, MISSOURI 63301  
TEL (636) 724-8300  
FAX (636) 724-8304  
info@twm-inc.com
- WATERLOO OFFICE  
113 SOUTH MAIN STREET  
WATERLOO, ILLINOIS 62298  
TEL (618) 939-5050  
FAX (618) 939-3938  
info@twm-inc.com

| PROFESSIONAL REGISTRATIONS          | LICENSE NO. |
|-------------------------------------|-------------|
| ILLINOIS PROFESSIONAL DESIGN FIRM   | 184-001220  |
| PROFESSIONAL ENGINEERING CORP.      | 62-035370   |
| PROFESSIONAL STRUCTURAL ENGR. CORP. | 81-005002   |
| ILLINOIS PROF. LAND SURVEYING CORP. | 648-000029  |
| MISSOURI PROFESSIONAL ENGR. CORP.   | MC 001528   |
| MISSOURI LAND SURVEYING CORP.       | MC 000346   |

PINE DALE DRIVE 50' WIDE

LOT 69  
RAETZ, WILLIAM R.  
08-09.0-407-030  
DOC. #A01708804

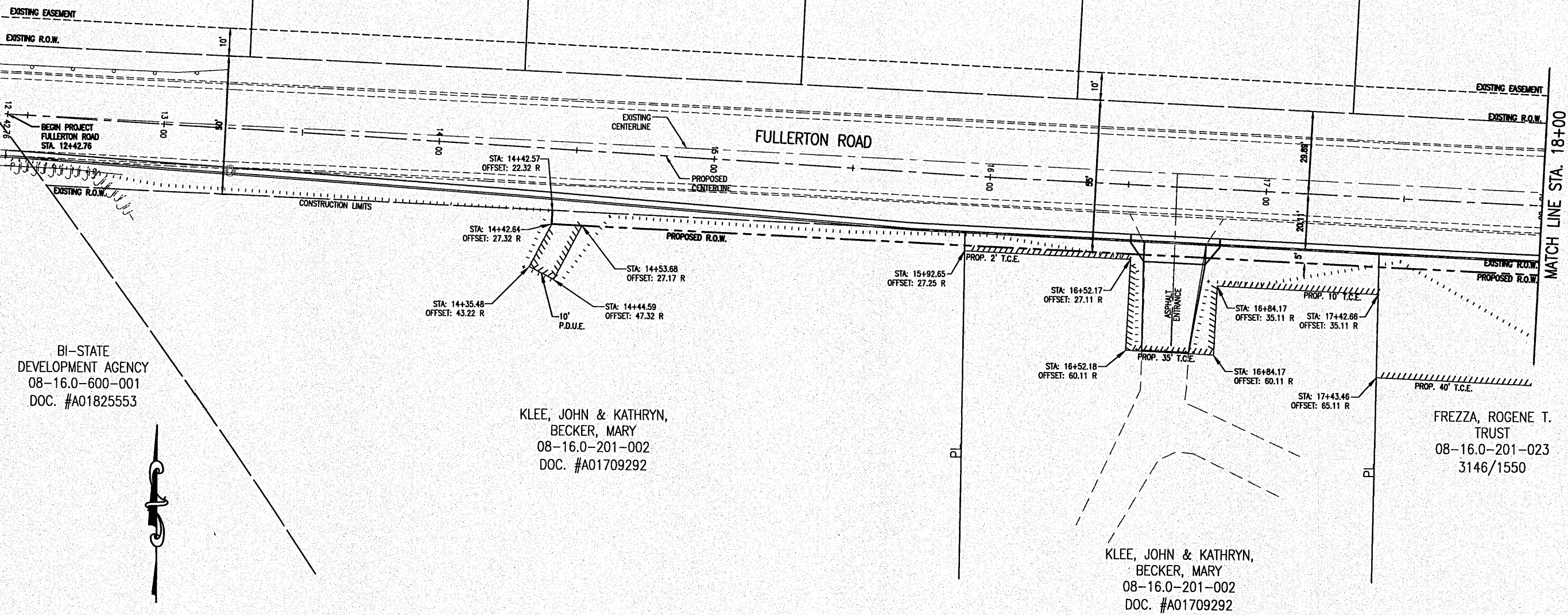
LOT 68  
PETERSON, LEBECCA J.  
& MARSHALL K. III  
08-09.0-407-031  
2704/1595

LOT 67  
HAEGE, BRUCE  
& CONNIE  
08-09.0-407-032  
DOC. #A01563837

LOT 51  
PETERSON, LLOYD H.  
ET AL  
08-09.0-407-033  
DOC. #A01830860

LOT 50  
BALLARD, JAMES C.  
& DEBORAH K.  
08-09.0-407-034  
DOC. #A01915938

LOT 49  
WATSON, HAROLD  
& PAULINE  
08-09-405-001  
3300/448



BI-STATE  
DEVELOPMENT AGENCY  
08-16.0-600-001  
DOC. #A01825553

KLEE, JOHN & KATHRYN,  
BECKER, MARY  
08-16.0-201-002  
DOC. #A01709292

KLEE, JOHN & KATHRYN,  
BECKER, MARY  
08-16.0-201-002  
DOC. #A01709292

FREZZA, ROGENE T.  
TRUST  
08-16.0-201-023  
3146/1550



RIGHT OF WAY PLAN

FULLERTON ROAD WIDENING  
VILLAGE OF SWANSEA  
ST. CLAIR COUNTY, ILLINOIS

| REV. | DATE | DESCRIPTION |
|------|------|-------------|
|      |      |             |
|      |      |             |
|      |      |             |

PLAN STATUS:  
**FINAL**

- ISSUED FOR REVIEW
- ISSUED FOR BIDDING
- ISSUED FOR CONSTR.
- RECORD DRAWING

|                 |           |                     |
|-----------------|-----------|---------------------|
| DRAWN BY:       | JJV       | SHEET               |
| DESIGNED BY:    | JJV       | <b>27</b>           |
| CHECKED BY:     | RSD       | OF 69 SHEETS        |
| APPROVED BY:    | JJV       | PROJECT DESCRIPTION |
| PROJECT NUMBER: | T07050149 |                     |