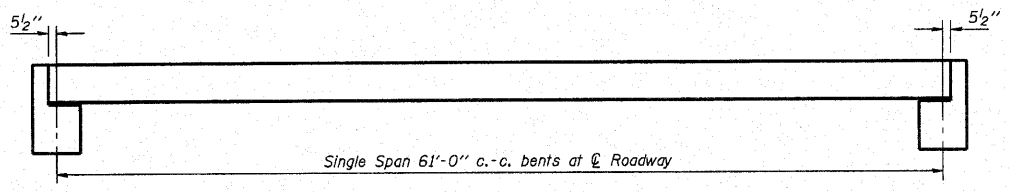
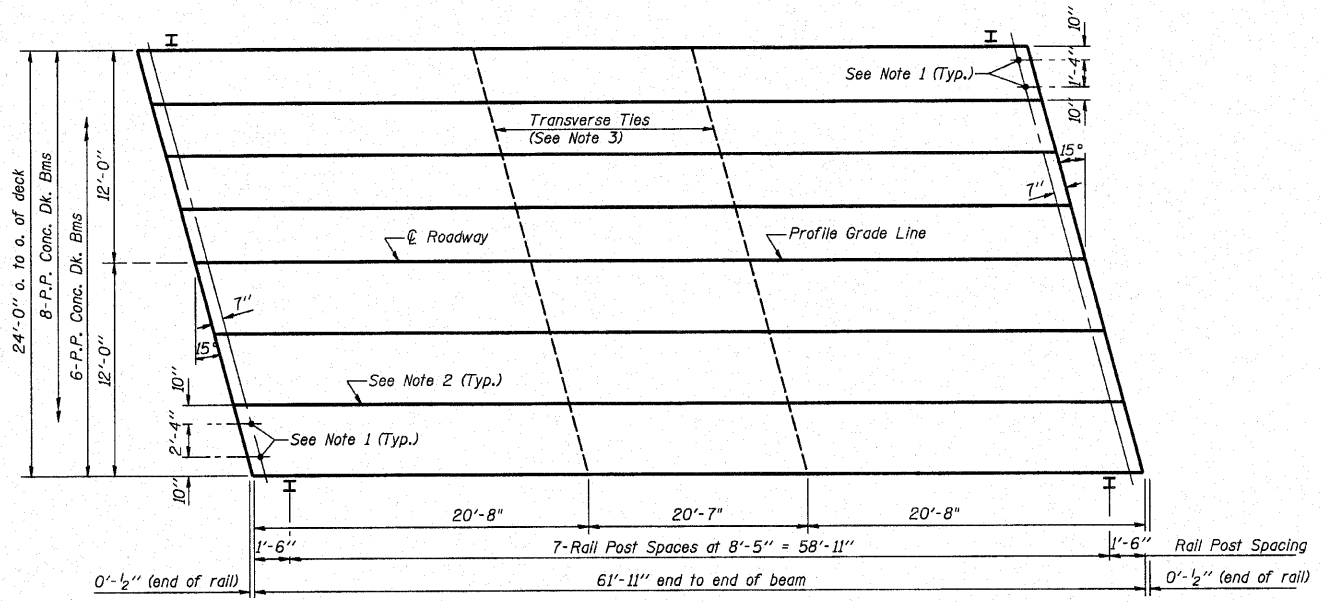


ROUTE NO.	SECTION	COUNTY	TOTAL SHEETS	SHEET NO.
T.R. 442	04-0616-00-BR	MARION	13	5
FEDERAL AID PROJECT		ILLINOIS PROJECT		

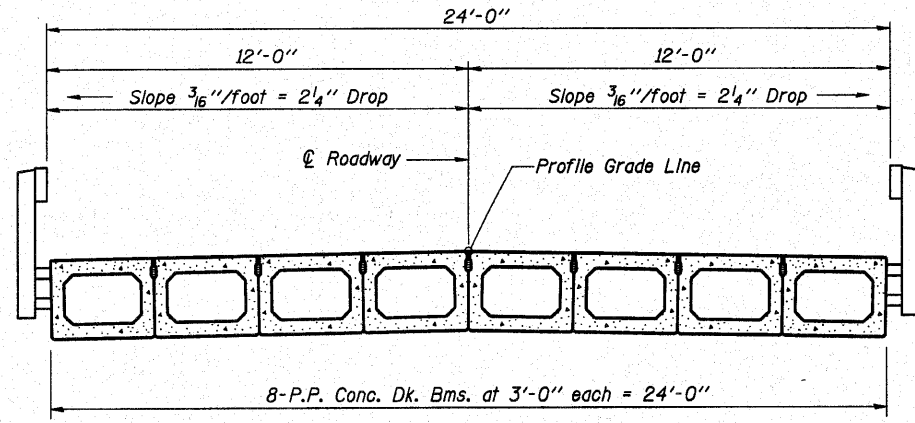
CONTRACT NO. 97451



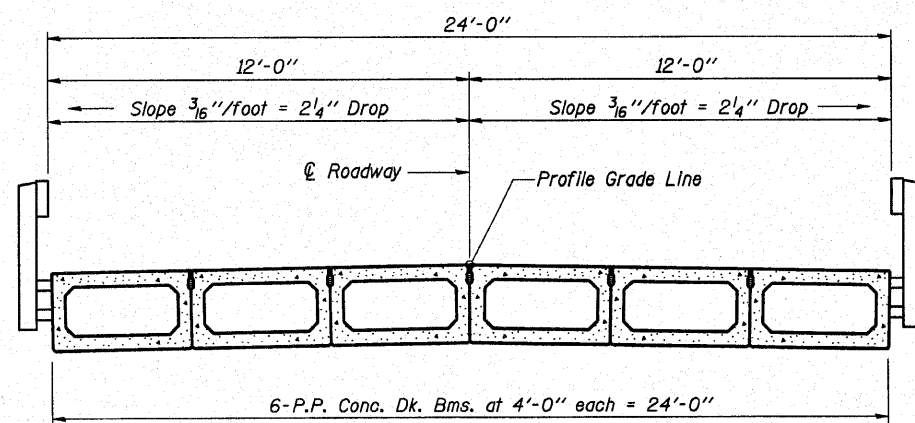
TYPICAL ELEVATION



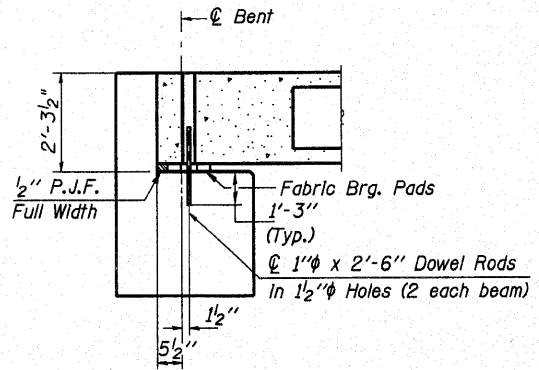
PLAN



CROSS SECTION



CROSS SECTION



SECTION AT ABUTS.
(Along ϕ Beams)

**BILL OF MATERIAL
QUANTITIES FOR ONE SPAN**

P.P. Conc. Dk. Bm. 27" Dp.	1488 Sq. Ft.
Steel Railing	124 Ft.

NOTES

1. After beams have been erected, holes shall be drilled into substructure and anchor dowels placed. Dowel holes shall be filled with non-shrink grout to top of beam and allowed to cure min. 24 hrs. prior to grouting the shear keys.
2. Longitudinal keys shall be grouted.
3. The 1" ϕ rods in the transverse tie assembly shall be tightened to a snug fit and the threads set. Pockets that receive transverse tie bar outside shall be filled with grout after transverse tie assembly is in place. See sht. 7 and 9 for additional information.

RHUTASEL and ASSOCIATES, INC.
CONSULTING ENGINEERS & LAND SURVEYORS
CENTRALIA, ILLINOIS FREEBURG, ILLINOIS

PREPARED FOR:
AECOM
200705485

Date: 10/27/2010
Design: WDL
Drawn: BLT
Job No.: 50810

**P.P.C. DECK BEAM
SUPERSTRUCTURE**

24' ROADWAY
27" BEAMS
61' SPAN - 15° SKEW