

ROAD CLASSIFICATION: *MASOR COLLECTOR*
 DESIGN SPEED: 50 M.P.H.

ADT:
 (2009) = 1100
 (2029) = 1400
 PC = 1349
 SU = 38
 MU = 13
 DHV20 = 140

JOINT UTILITY LOCATING INFORMATION
 FOR EXCAVATIONS (J.U.L.I.E.)
 PHONE 1-800-892-0123

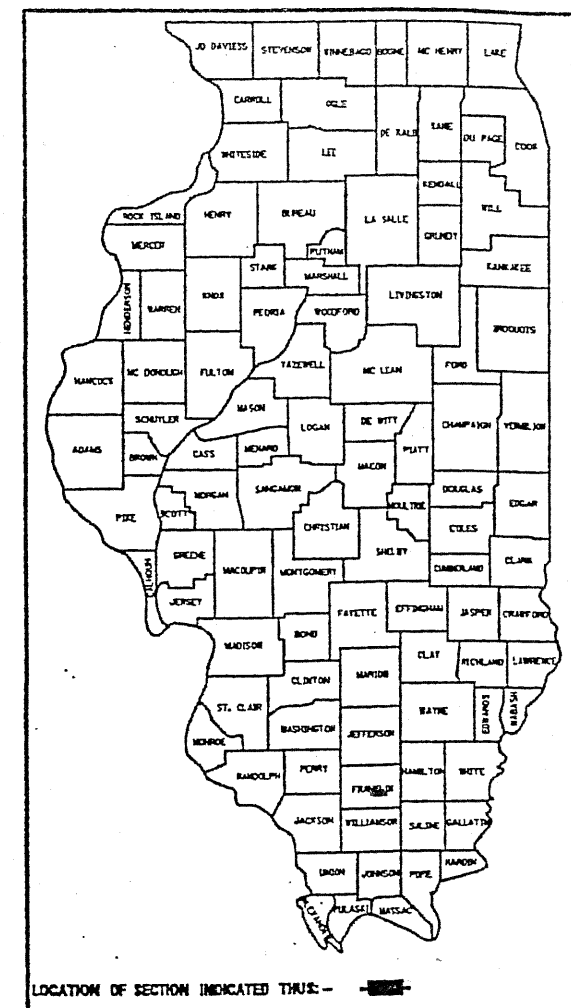
STATE OF ILLINOIS
 DEPARTMENT OF TRANSPORTATION
 DIVISION OF HIGHWAYS

PLANS FOR PROPOSED ROADWAY IMPROVEMENTS

FEDERAL-AID S.T.R. & T.A.R.P. PROJECT
FAS 873, CH3

Franklin County, Illinois
 Section *08-00171-00-RS*
 Project *RS-0873(112)*
 JOB *C-99-527-09*

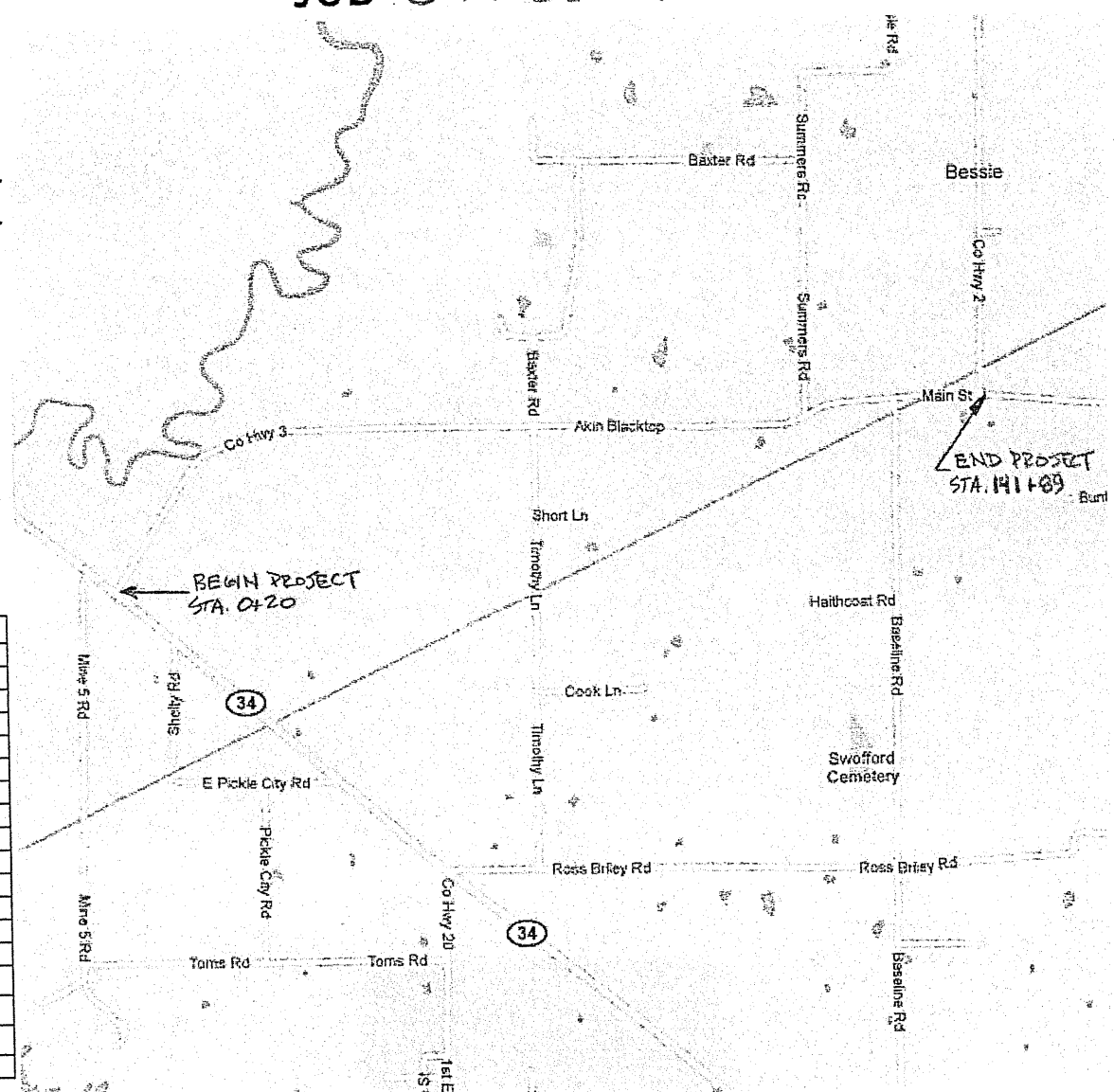
RTE.	SECTION	COUNTY	TOTAL SHEETS	SHEET NO
<i>FAS 873</i>	<i>08-00171-00-RS</i>	FRANKLIN	6	1



SHEET NO.	TITLE
1	COVER SHEET AND SUMMARY OF QUANTITIES
2	MISCELLANEOUS DETAILS
3	TYPICAL SECTIONS AND MISCELLANEOUS DETAILS
4-6	PLAN

STANDARDS

- 701006-03
- 701201-04
- 701301-04
- 701306-03
- 701311-03
- 701901-01
- 780001-02
- BLR 24-2



LOCATION MAP

NET LENGTH = 2.683 MILES (14,165 FEET)

SUMMARY OF QUANTITIES			
CODE NO.	PAY ITEM	UNIT	TOTAL
40200800	AGGREGATE SURFACE COURSE, TYPE B	TON	54
40600100	BITUMINOUS MATERIALS (PRIME COAT)	GALLON	259
40600982	HOT-MIX ASPHALT SURFACE REMOVAL	SQ YD	266
	-BUTT JOINT		
40603085	HOT-MIX ASPHALT BINDER COURSE,	TON	4,170
	IL 19.0, N70		
40603315	HOT-MIX ASPHALT SURFACE COURSE,	TON	3,393
	MIX "C", N70		
<i>X4401198</i>	HOT-MIX ASPHALT SURFACE REMOVAL	SQ YD	635
	-VARIABLE DEPTH		
48100100	AGGREGATE SHOULDERS, TYPE A	TON	3,550
67100100	MOBILIZATION	L SUM	1
70300100	SHORT-TERM PAVEMENT MARKING	FOOT	1,417
78001100	PAINT PAVEMENT MARKING - LETTERS & SYMBOLS	<i>SQ FT</i>	122.4
78001110	PAINT PAVEMENT MARKING - LINE 4"	FOOT	42,881
78001180	PAINT PAVEMENT MARKING - LINE 24"	FOOT	60
*20048665	RAILROAD PROTECTIVE LIABILITY INSURANCE	L SUM	1

△ SPECIALTY ITEMS
 * SEE SPECIAL PROVISIONS

CONTRACT NO. *99432*

STATE OF ILLINOIS
 DEPARTMENT OF TRANSPORTATION

APPROVED *8-13-2010*

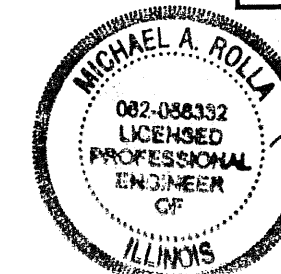
 FRANKLIN COUNTY HIGHWAY ENGINEER

PASSED *8/31/2010*

 DISTRICT 9 ENGINEER OF LOCAL ROADS & STREETS

RELEASING FOR BID
 BASED ON LIMITED
 REVIEW *8-31-2010*

 DEPUTY DIRECTOR OF HIGHWAYS, REGION 5 ENGINEER



MICHAEL A. ROLLA
 ILLINOIS REGISTERED PROFESSIONAL ENGINEER
 #062-056332
 LIC. EXPIRES NOVEMBER 30, 2011