

90% FED ZOE1
10% STATE 0047

90% FED ZOE1
10% STATE 0047

CODE NO.	ITEM	UNIT	TOTAL QUANTITY
20200600	EXCAVATING AND GRADING EXISTING SHOULDER	UNIT	25
44000500	COMBINATION CURB AND GUTTER REMOVAL	FOOT	1,326
44003100	MEDIAN REMOVAL	SQ FT	330
44003510	MEDIAN REMOVAL PARTIAL DEPTH	SQ FT	4502
44004250	PAVED SHOULDER REMOVAL	SQ YD	172
48203033	HOT-MIX ASPHALT SHOULDERS, 9"	SQ YD	2,507
50102400	CONCRETE REMOVAL	CU YD	11
50104000	BRIDGE RAIL REMOVAL	FOOT	526
50300300	PROTECTIVE COAT	SQ YD	1869
50800205	REINFORCING BARS EPOXY COATED	POUND	6406
50800515	BAR SPLICERS	EACH	32
50300255	CONCRETE SUPERSTRUCTURE	CU YD	37
52000110	PREFORMED JOINT STRIP SEAL	FOOT	137
60625600	ISLAND PAVEMENT (6")	SQ YD	37
60608700	COMB CONC C & G, TY M-6.06 (ABUTTING EXISTING PAVEMENT)	FOOT	1,326

CODE NO.	ITEM	UNIT	TOTAL QUANTITY
67000400	ENGINEER'S FIELD OFFICE, TYPE A	CAL MO	2
67100100	MOBILIZATION	L SUM	1
70100200	TRAFFIC CONTROL AND PROTECTION, STANDARD 701331	EACH	1
70100450	TRAFFIC CONTROL AND PROTECTION, STANDARD 701201	L SUM	1
70100500	TRAFFIC CONTROL AND PROTECTION, STANDARD 701326	L SUM	1
70103815	TRAFFIC CONTROL SURVEILLANCE	CAL DA	14
70307120	TEMPORARY PAVEMENT MARKING - LINE 4" - TYPE IV TAPE	FOOT	11,176
* 78000100	MODIFIED URETHANE PAVEMENT MARKING - LETTERS AND SYMBOLS	SQ FT	94
* 78000200	THERMOPLASTIC PAVEMENT MARKING - LINE 4",	FOOT	6,482
* X0326961	REMOVAL AND DISPOSAL OF LEAD BASED PAINT	L SUM	1
78300202	PAVEMENT MARKING REMOVAL - WATER BLASTING	SQ FT	1,459
X5030250	BRIDGE DECK GROOVING (LONGITUDINAL)	SQ YD	1,048
X7030005	TEMPORARY PAVEMENT MARKING REMOVAL	SQ FT	3,832
* Z0007101	CONTAINMENT AND DISPOSAL OF LEAD PAINT CLEANING RESIDUES NO. 1	L SUM	1
Z0010501	CLEANING AND PAINTING STEEL BRIDGE, No. 1	L SUM	1
Z0012142	BRIDGE DECK SCARIFICATION 2 1/4"	SQ YD	1368
Z0029090	DIAMOND GRINDING (BRIDGE SECTION)	SQ YD	1340

*= SPECIALTY ITEM

MODEL: Default
FILE NAME: \\kpf.com\dfs\bridge\2100142 (DOT Work Order #4 SN 071-0055)\02_Design (MS)\071-0055_03_Summary of Quantities Sht. 1.dgn



USER NAME *	DESIGNED -	REVISED -
PLOT SCALE *	CHECKED -	REVISED -
PLOT DATE *	DRAWN -	REVISED -
	CHECKED -	REVISED -

STATE OF ILLINOIS
DEPARTMENT OF TRANSPORTATION

SN 071-0055 IL 64 CROSSING I-39 (EXIT 104)
SUMMARY OF QUANTITIES

F.A. RTE.	SECTION	COUNTY	TOTAL SHEETS	SHEET NO.
39	(141-2HB-1)BD	OGLE	22	3
CONTRACT NO. 64P88				
ILLINOIS FED. AID PROJECT				

90% FED ZOE1
 10% STATE 0047

CODE NO.	ITEM	UNIT	TOTAL QUANTITY
Z0012164	BRIDGE DECK MICROSILICA OVERLAY 2 1/2" 1	SQ YD	1368
Z0012754	STRUCTURAL REPAIR OF CONCRETE (DEPTH EQUAL TO OR LESS THAN 5 INCHES)	SQ FT	262
Z0012755	STRUCTURAL REPAIR OF CONCRETE (DEPTH GREATER THAN 5 INCHES)	SQ FT	63
Z0021904	SILCONE JOINT SEALER, 1"	FT	136
Z0041895	POLYMER CONCRETE	CU FT	25

1

CODE NO.	ITEM	UNIT	TOTAL QUANTITY

MODEL: Default
 FILE NAME: \\kpf.com\ids\bridge\100142 (DOT Work Order #4 SN 071-0055)\02_Design (MS)\071-0055 04_Summary of Quantities Sh 2.dgn

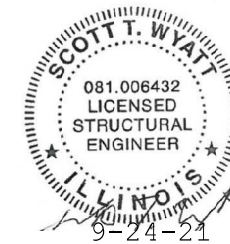
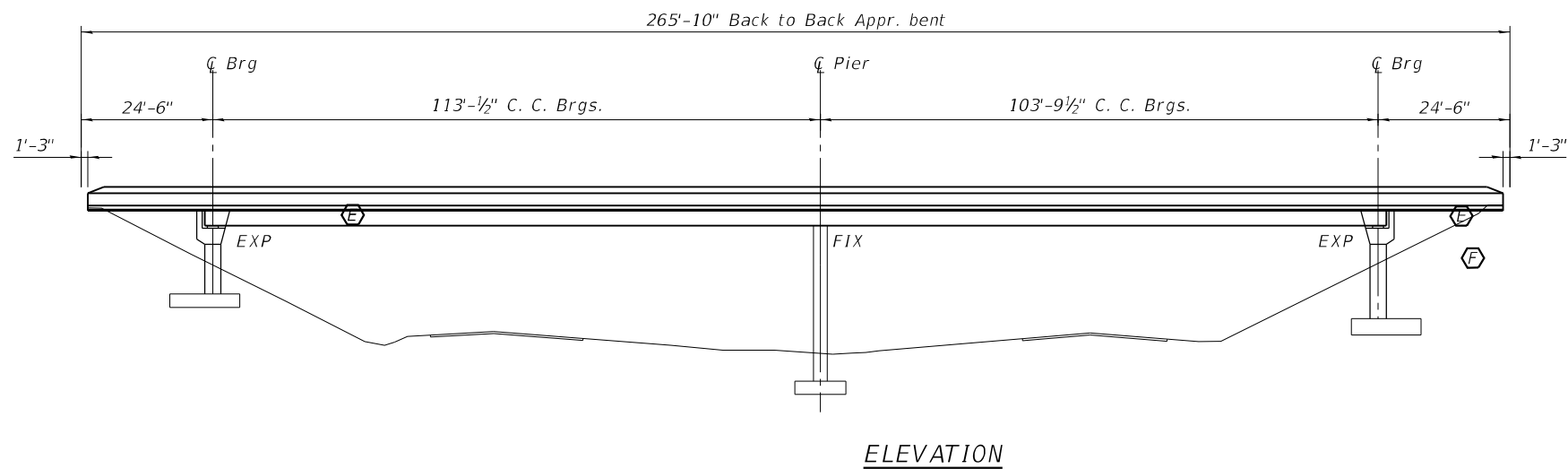
kpf
 1500 Sherman Ave, Suite 1020
 Evanston, IL 60201
 847-859-7790
 www.kpff.com

USER NAME =	DESIGNED -	REVISED -
PLOT SCALE =	CHECKED -	REVISED -
PLOT DATE =	DRAWN -	REVISED -
	CHECKED -	REVISED -

STATE OF ILLINOIS
DEPARTMENT OF TRANSPORTATION

SN 071-0055 IL 64 CROSSING I-39 (EXIT 104)
SUMMARY OF QUANTITIES

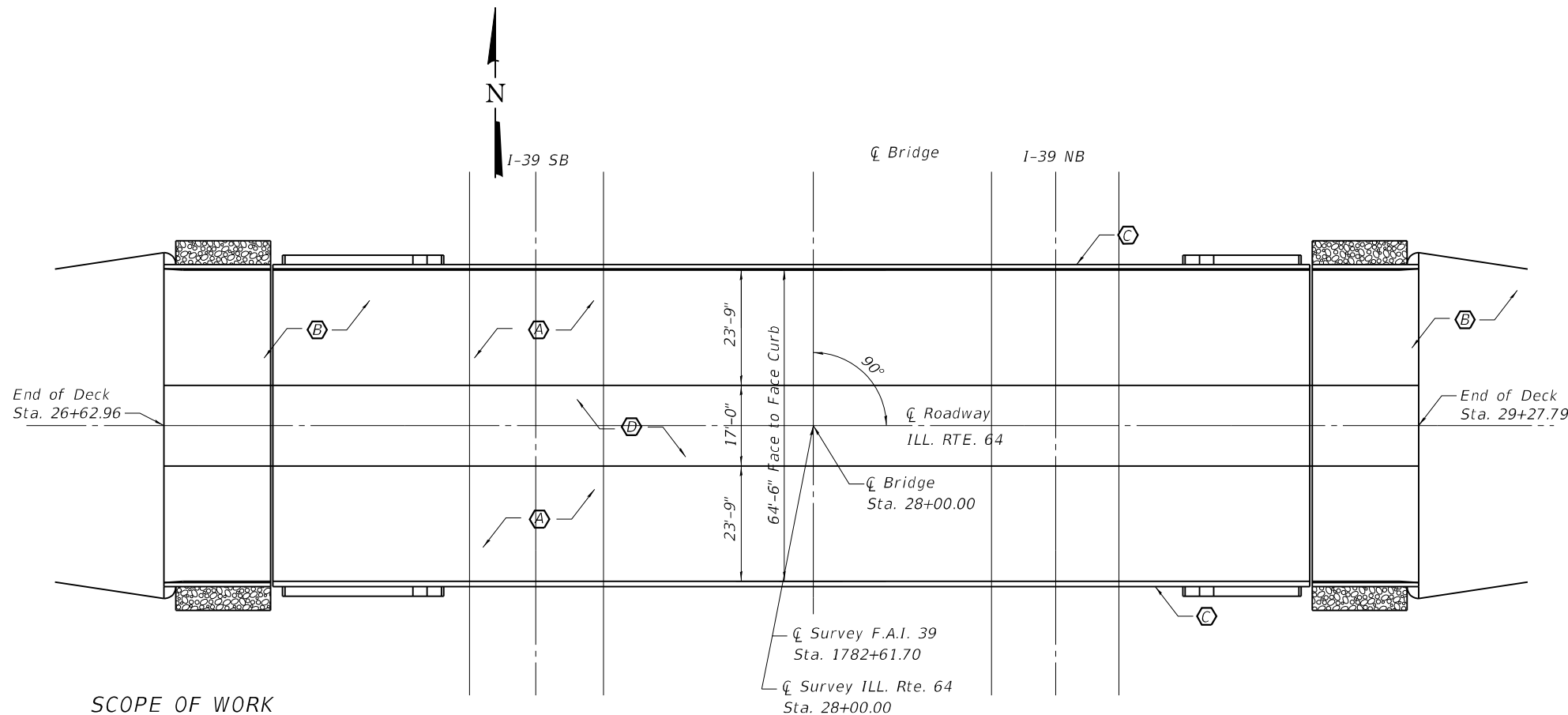
F.A. RTE.	SECTION	COUNTY	TOTAL SHEETS	SHEET NO.
39	(141-2HB-1)BD	OGLE	22	4
CONTRACT NO. 64P88				
ILLINOIS FED. AID PROJECT				



EXP 11-30-22

TOTAL BILL OF MATERIAL

ITEM	UNIT	TOTAL
Concrete Removal	Cu. Yd.	11
Concrete Superstructure	Cu. Yd.	37
Bridge Deck Microsilica Concrete Overlay 2 1/2"	Sq. Yd.	1868
Bridge Deck Scarification 2 1/4"	Sq. Yd.	1368
Silicone Joint Sealer 1"	Foot	136
Preformed Joint Strip Seal	Foot	136
Bar Splicers	Each	32
Polymer Concrete	Cu. Ft.	25
Reinforcement Bars, Epoxy Coated	Pound	6406
Cleaning and Painting Steel Bridge No. 1	L. Sum	1
Structural Repair of Concrete <= 5"	Sq. Ft.	262
Diamond Grinding (Bridge Section)	Sq. Yd.	1340
Bridge Deck Grooving (Longitudinal)	Sq. Yd.	1048
Containment and Disposal of Lead Paint Cleaning Residues, No. 1	L. Sum	1



SCOPE OF WORK

- (A) Remove existing 2 1/4" microsilica concrete overlay, replace with 2 1/2" microsilica overlay, diamond grind 1/4".
- (B) Remove and replace Preformed Joint Strip Seals and Silicone Joint Seals at abutments.
- (C) Barrier rail improvements.
- (D) Median repairs
- (E) Clean and paint beam ends
- (F) Abutment repairs.

PLAN

The Structure Number shall remain SN 071-0055.
 Plan dimensions and details relative to the existing plans are subject to nominal construction variations. The Contractor shall field verify existing dimensions and details affecting new construction and make necessary approved adjustments prior to construction or ordering materials. Such variations shall not be cause for additional compensation for a change in scope of the work, however, the Contractor will be paid for the quantity actually furnished at the unit price bid for the work.
 Prior to pouring the new concrete overlay, all heavy or loose rust, loose mill scale, and other loose or potentially detrimental foreign material shall be removed from the surfaces in contact with concrete. Tightly adhered paint may remain unless otherwise noted. Removal shall be accomplished by methods that will not damage the steel and the cost will be included in the pay item covering removal of the existing concrete.
 Reinforcement bars designated (E) shall be epoxy coated.
 Existing reinforcement bars extending into the removal area shall be cleaned, straightened and incorporated into the new construction. Any reinforcement bars that are damaged during concrete removal shall be repaired with an approved bar splicer anchorage system. Cost included with Concrete Removal.
 Joint openings shall be adjusted according to Article 520.04 of the Standard Specifications when the deck is poured at an ambient temperature other than 50° F.
 Traffic will be maintained using temporary signalization.
 The contact surfaces of the existing steel may contain lead. The Contractor shall take appropriate precautions for "Cleaning and Painting Existing Steel Structures"
 Cleaning and painting existing steel shall be as specified in the Special Provision for "Cleaning and Painting Existing Steel Structures" as specified below:
 Existing structural steel where shown on the plans shall be cleaned per the requirements of near white blast cleaning (SPPC-SP-10).
 A minimum of one (1) high volume air monitors will be required to monitor air quality during dust producing operations. See special provisions.
 The cleaned area of the structural steel shall be primed per the requirement of "paint system 1-0Z/E/U."
 The final finish coat shall be "interstate green, munsell No. 7.5G 4/8."
 The SSPC-QP1 and SSPC-QP2 certifications will be required for this project.

MODEL: Default
 FILE NAME: \\kpff.com\dis\Bridges\2100142 (IDOT Work Order #4 SN 071-0055)\02_Design (MS)\071-0055_13_Plan & Elevation.dgn
 12/7/2021 1:16:05 PM

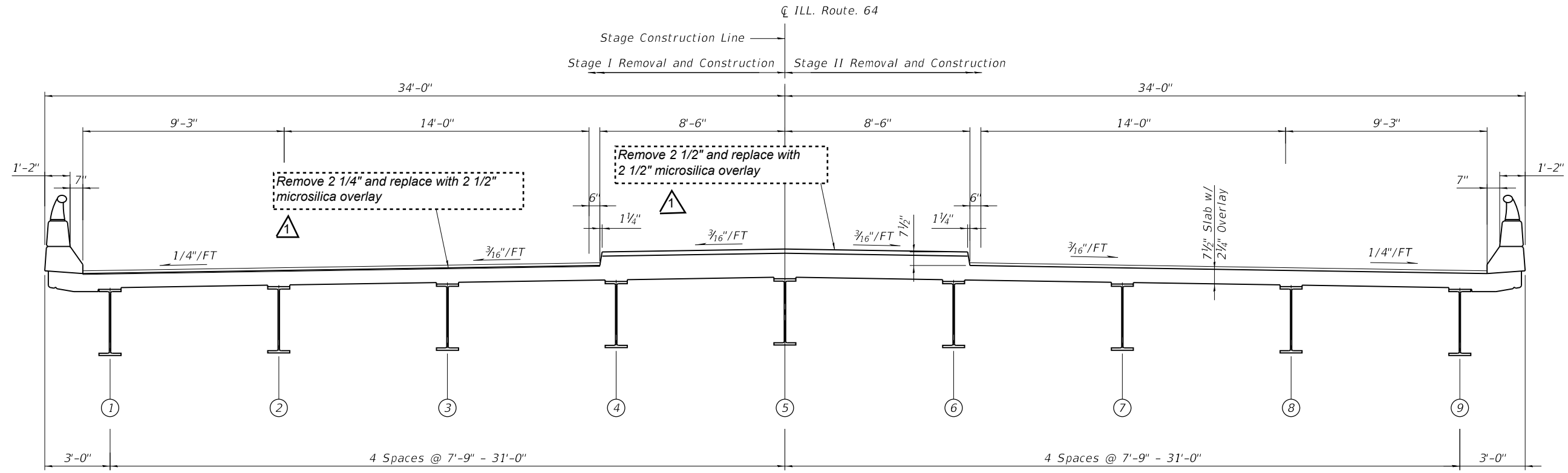


USER NAME =	DESIGNED -	REVISED 1 Rev. VHV 12/27/21
PLOT SCALE =	CHECKED -	REVISED -
PLOT DATE =	DRAWN -	REVISED -
	CHECKED -	REVISED -

STATE OF ILLINOIS
 DEPARTMENT OF TRANSPORTATION

SN 071-0055 IL 64 CROSSING I-39 (EXIT 104)
 PLAN AND ELEVATION

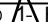
F.A. RTE.	SECTION	COUNTY	TOTAL SHEETS	SHEET NO.
39	(141-2HB-1BD)	OGLE	22	13
CONTRACT NO. 64P88				
ILLINOIS FED. AID PROJECT				



DECK CROSS SECTION
(LOOKING EAST)

MODEL: Default
FILE NAME: \\kpff.com\dis\Brdg\2100142 (DOT Work Order #4 SN 071-0055)\02_Design (MS)\071-0055_14_Typical Section.dgn




USER NAME =	DESIGNED -	REVISED  Rev. VHV 12/28/21
PLOT SCALE =	CHECKED -	REVISED -
PLOT DATE =	DRAWN -	REVISED -
	CHECKED -	REVISED -

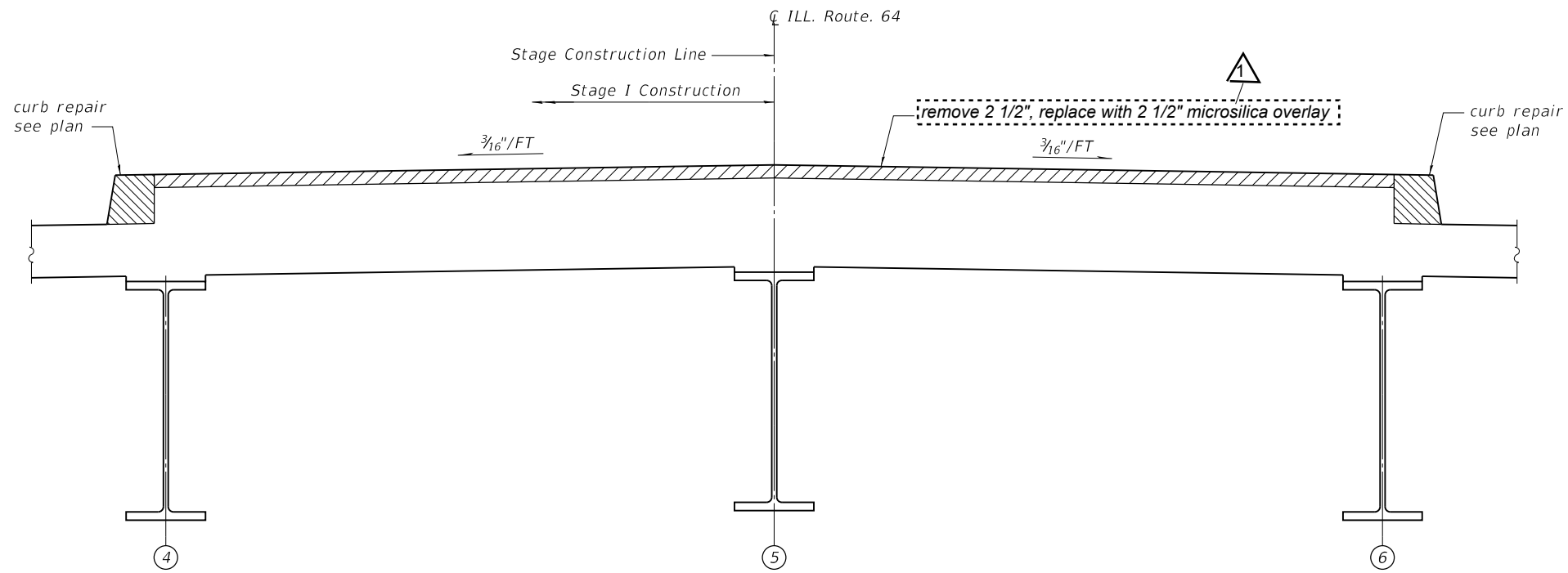
STATE OF ILLINOIS
DEPARTMENT OF TRANSPORTATION

SN 071-0055 IL 64 CROSSING I-39 (EXIT 104)
TYPICAL SECTION

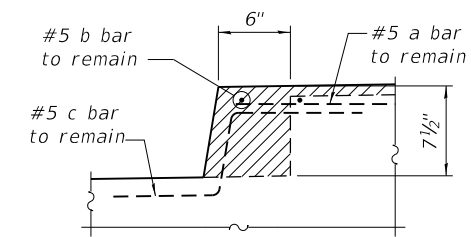
F.A. RTE.	SECTION	COUNTY	TOTAL SHEETS	SHEET NO.
39	(141-2HB-1BD)	OGLE	22	14
CONTRACT NO. 64P88				
ILLINOIS FED. AID PROJECT				

05/30/2021 11:01:07 AM

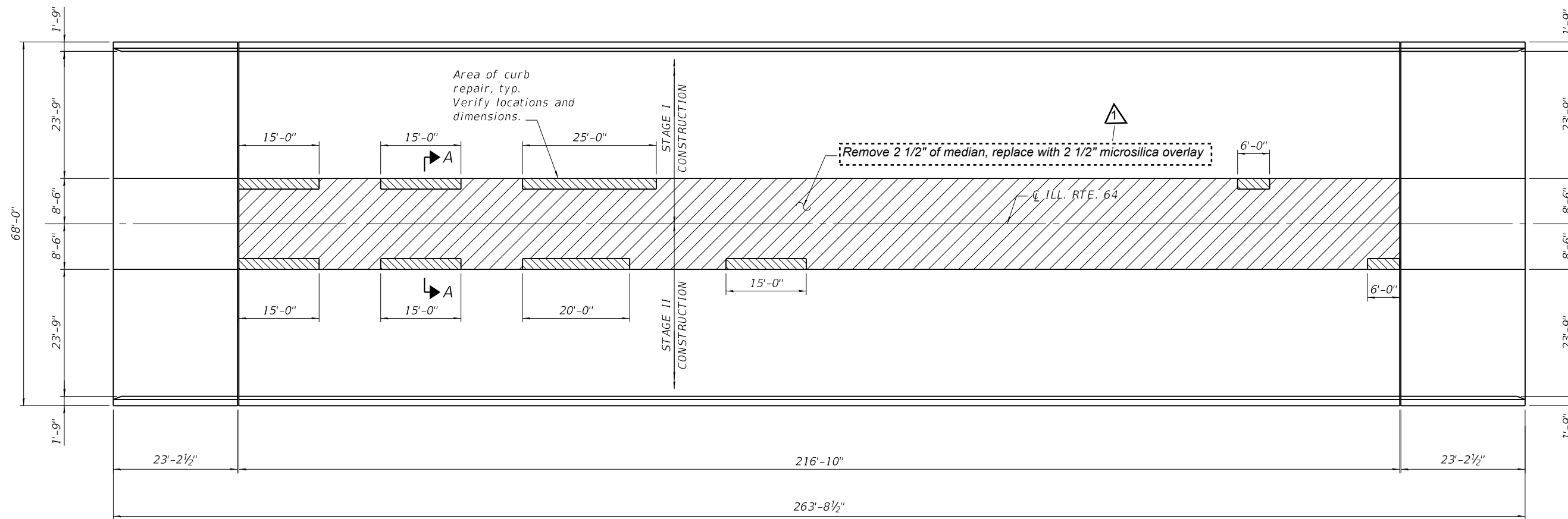
 REV. 12/28/21



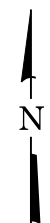
SECTION A-A



CURB REPAIR DETAIL



PLAN



MODEL: Default
 FILE NAME: \\kpf.com\dfs\Brdg\2100142 (IDOT Work Order #4 SN 071-0055)\02_Design (MS)\071-0055_15_Median Repairs.dgn

kpff
 1500 Sherman Ave, Suite 1020
 Evanston, IL 60201
 847-859-7790
 www.kpff.com

USER NAME =	DESIGNED -	REVISED 1 Rev. VHV 12/18/21
PLOT SCALE =	CHECKED -	REVISED -
PLOT DATE =	DRAWN -	REVISED -
	CHECKED -	REVISED -

STATE OF ILLINOIS
 DEPARTMENT OF TRANSPORTATION

SN 071-0055 IL 64 CROSSING I-39 (EXIT 104)
 MEDIAN REPAIRS

F.A. RTE. 39	SECTION (141-2HB-1BD)	COUNTY OGLE	TOTAL SHEETS 22	SHEET NO. 15
CONTRACT NO. 64P88				
ILLINOIS FED. AID PROJECT				

05/30/2021 10:58:45 AM